

CERTIFIED LAND CORNER RESTORATION

State of Wisconsin }
County of Forest } ss.

I Jean F. Resvick, do hereby certify that on the 13th day of May, 1969, I found evidence of the south quarter corner of section 2 Township 34 north, Range 15 east, Fourth Principal Meridian, as described hereon; and that from this evidence I established a new monument and accessories as described hereon to perpetuate the original location of this corner:

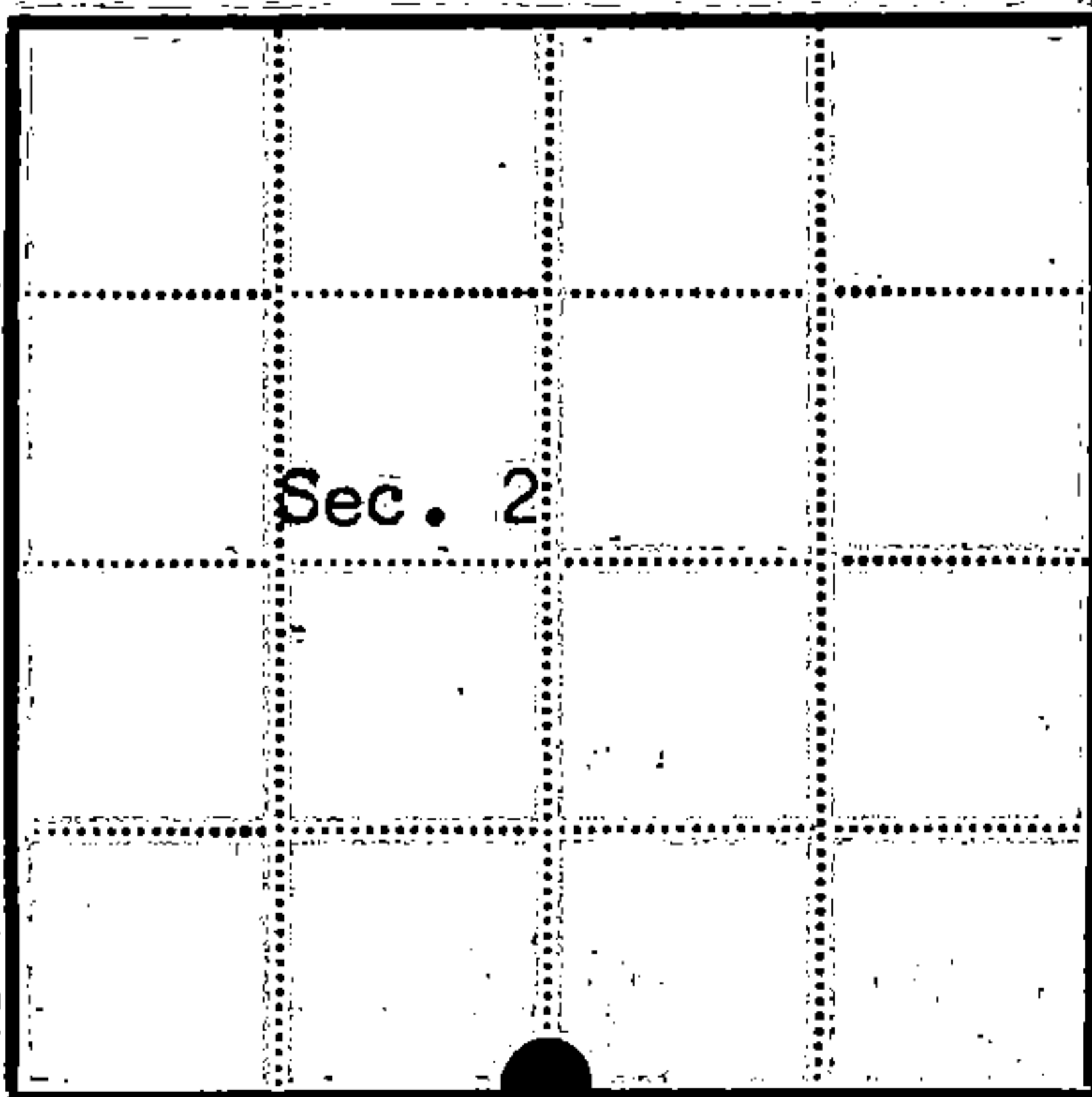
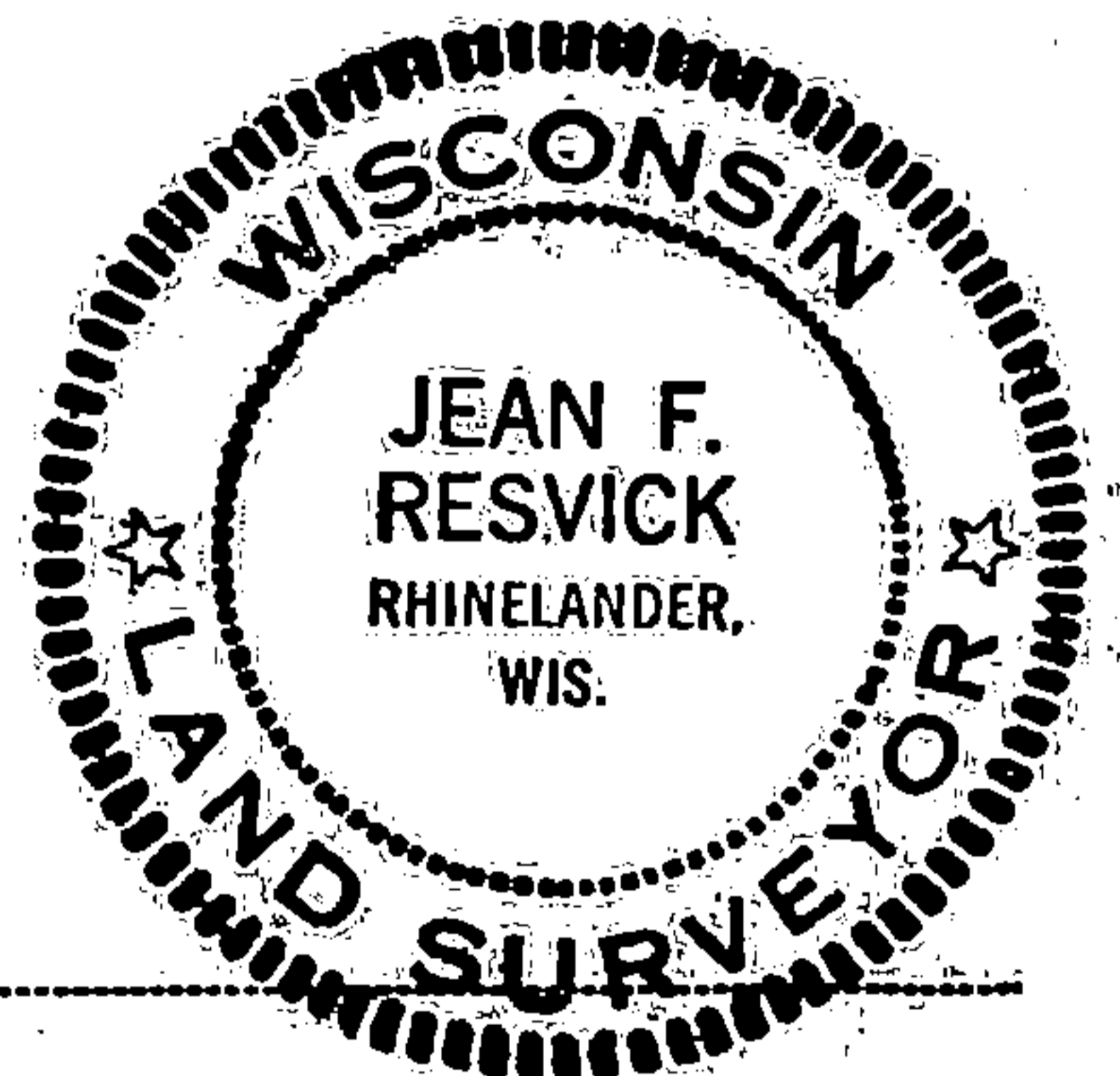
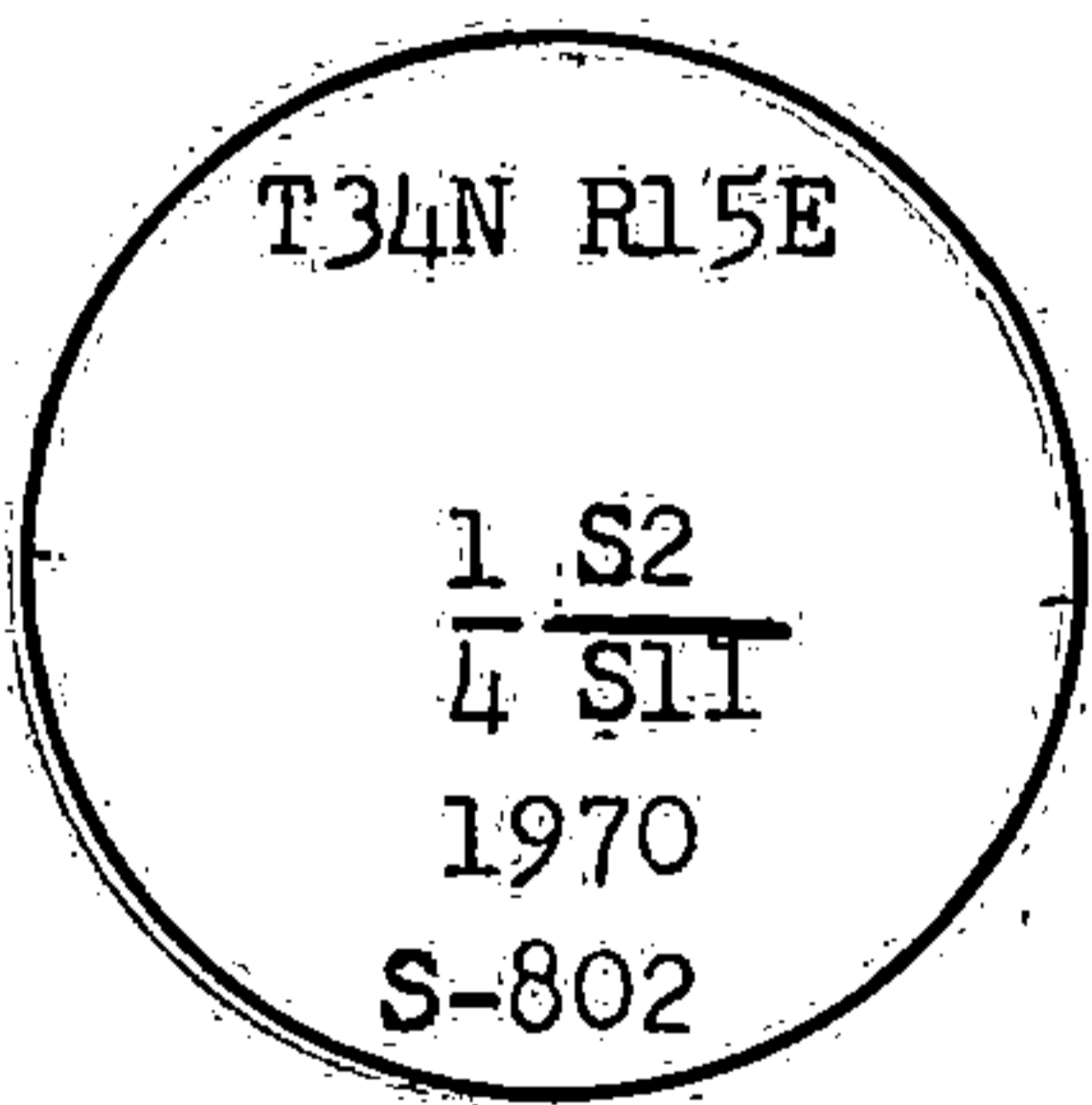
Description of original monument and accessories and subsequent restorations:
Surveyed in 1859 by James McBride. 39.94 chains west corrected between sections 2 and 11, set post.
Tamarack 10, bears N53W, 13 lks.
Cedar 8, bears S5W, 17 lks.
4.74 chains east leave swamp bears N & S
9.56 chains west leave swamp bears N & S

Description of corner evidence found:
Squared cedar post 39.5 chains west from approximate section corner and 4.7 chains west from edge of swamp.
Tamarack stump bears N53W, 13 lks. from post.

Description of monument and accessories I established to perpetuate the original location of this corner:
Replaced squared post with 2 inch inside diameter galvanized, wrought iron pipe, 5 feet long, filled with concrete, with brass cap stamped.

From which the following blazed and scribed new bearing trees bear.

- Cedar 6, bears N23W, 35.46 ft.
- Cedar 4, bears S37E, 20.14 ft.
- Steel post 1 ft. south of monument.



● = Corner monument restored
□ =

Resident witnesses _____
Dated at Rhinelander Wisconsin, this 8th day of April 1970.
Signature: Jean F. Resvick Title: Cadastral Surveyor
(County Surveyor, Registered Land Surveyor, or other duly authorized official)
Surveyors Registration No. S-802 DOCUMENT NUMBER 98036

Office of Register of Deeds County of Forest
I hereby certify that the within instrument was filed in this office for record on the 22nd day of May, 1970, and was filed in Book No. _____ Page No. E-19 of County Records.

Signature: Eugene Staszny Title: Register of Deeds

Township 34 North, Range 15 East, Section 2, Index No. E-19, Page No. _____

E 19

Document Number

189325

REGISTER'S OFFICE
Forest County, Wis.

Received for record this 18th day
of November A.D., 2005 at
3:55 o'clock P.M. and recorded
in Vol. Corner Restoration
page E-19

Kay Swanson
Deputy
Register of Deeds

U.S. PUBLIC LAND SURVEY MONUMENT RECORD

(AS REQUIRED BY S. A-E 5.02, WI ADM. CODE)

HISTORY OF ORIGINAL CORNER ESTABLISHMENT AND SUBSEQUENT RESTORATIONS AND DESCRIPTION OF ANY RECORD, MONUMENT, OCCUPATIONAL, TESTIMONIAL, OR OTHER EVIDENCE CONSIDERED:

1858 - JAMES McBRIDE, SURVEYOR. 39.94 CHAINS WEST CORRECTED BETWEEN SECTIONS 2 AND 11, SET POST.

SET THE FOLLOWING WITNESSES:

TAMARACK 10" N53°W 13 LINKS
CEDAR 8" S05°W 17 LINKS

4.74 CHAINS EAST LEAVE SWAMP BEARS N & S.
9.56 CHAINS WEST LEAVE SWAMP BEARS N & S.

1970 - JEAN F. RESVICK, SURVEYOR, S-802, FOUND SQUARED CEDAR POST 39.5 CHAINS WEST FROM APPROXIMATE SECTION CORNER AND 4.7 CHAINS WEST FROM EDGE OF SWAMP. TAMARACK STUMP BEARS N53°W, 13 LINKS FROM POST. REPLACED SQUARED POST WITH 2" INSIDE DIAMETER GALVANIZED, WROUGHT IRON PIPE, 5' LONG, FILLED WITH CONCRETE, WITH BRASS CAP STAMPED.

SET THE FOLLOWING WITNESSES:

CEDAR 6" N23°W 35.46 FEET
CEDAR 4" S37°E 20.14 FEET
STEEL POST SOUTH 1.0 FEET

CORNER WAS: (CHECK ALL THAT APPLY)

- RESTORED THROUGH ACCEPTANCE OF AN OBLITERATED LOCATION
- RESTORED THROUGH ACCEPTANCE OF A FOUND PERPETUATED LOCATION
- CONSIDERED A LOST CORNER AND REESTABLISHED THROUGH LOST CORNER PROPORTIONATE METHODS (INCLUDING A PLAN VIEW DRAWING SHOWING DISTANCES AND DIRECTIONS TO OTHER PUBLIC LAND SURVEY CORNERS USED FOR PROPORTIONING AND DETERMINING THE CORNER LOCATION)
- RESTORED OR REESTABLISHED IN A LOCATION THAT DIFFERS FROM A PREVIOUS RESTORATION OF REESTABLISHMENT (INCLUDE A PLAN VIEW DRAWING AND INDICATE WHAT WAS SET AND/OR FOUND)

DESCRIBE THE MONUMENT AND ACCESSORIES USED TO PERPETUATE THE LOCATION OF THIS CORNER. (INCLUDE A PLAN VIEW DRAWING AND INDICATE WHAT WAS SET AND/OR FOUND)

FOUND A 2" IRON PIPE WITH A BRASS CAP STAMPED

FOUND THE FOLLOWING WITNESSES:

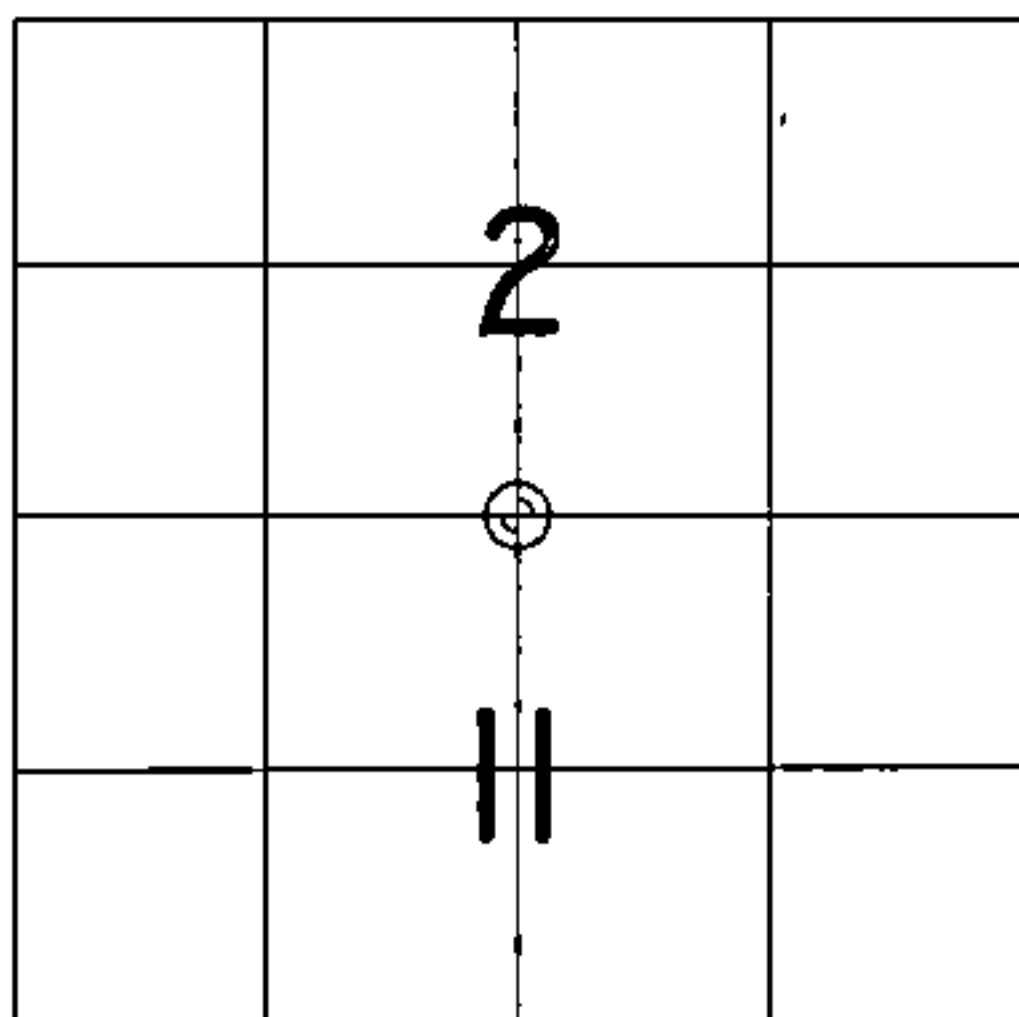
CEDAR 9" N21°W 35.24 FEET - SET NAIL IN TREE.
CEDAR 8" S36°E 19.98 FEET - SET NAIL IN TREE.

SET THE FOLLOWING WITNESSES:

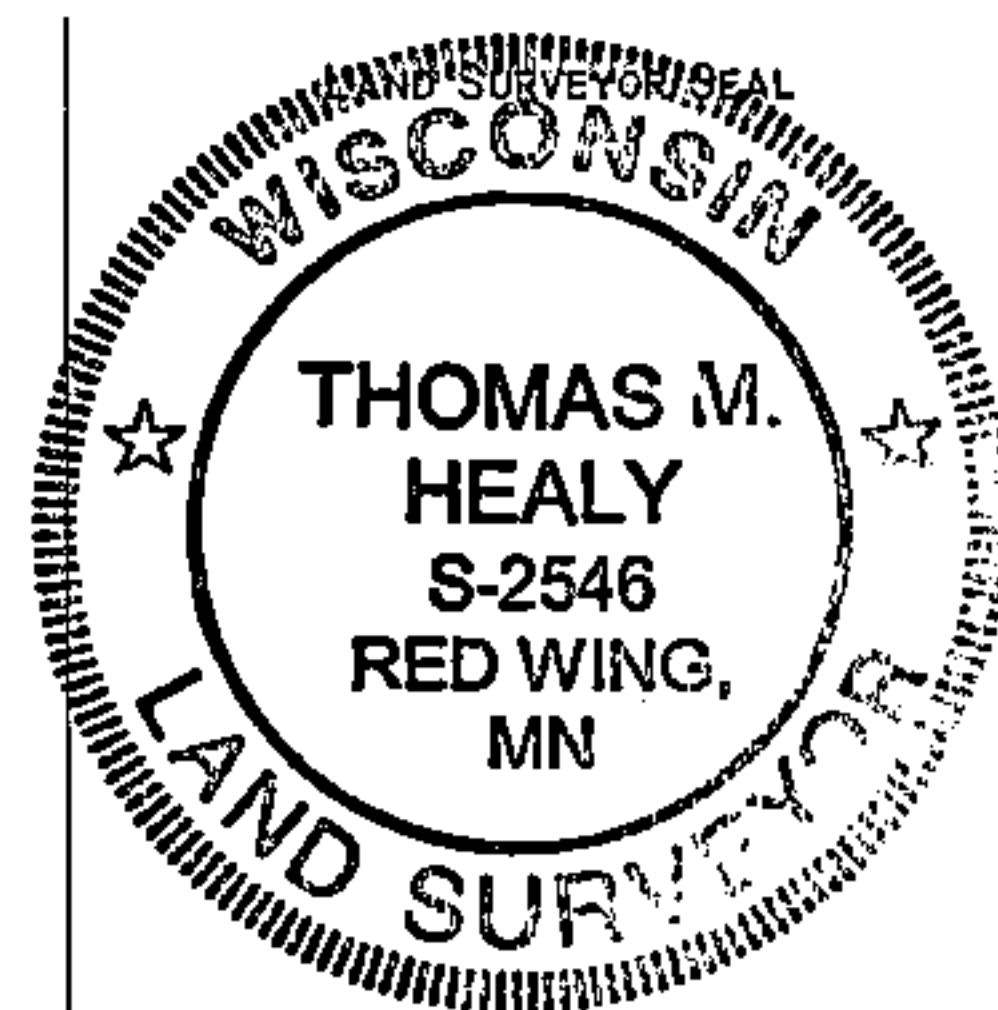
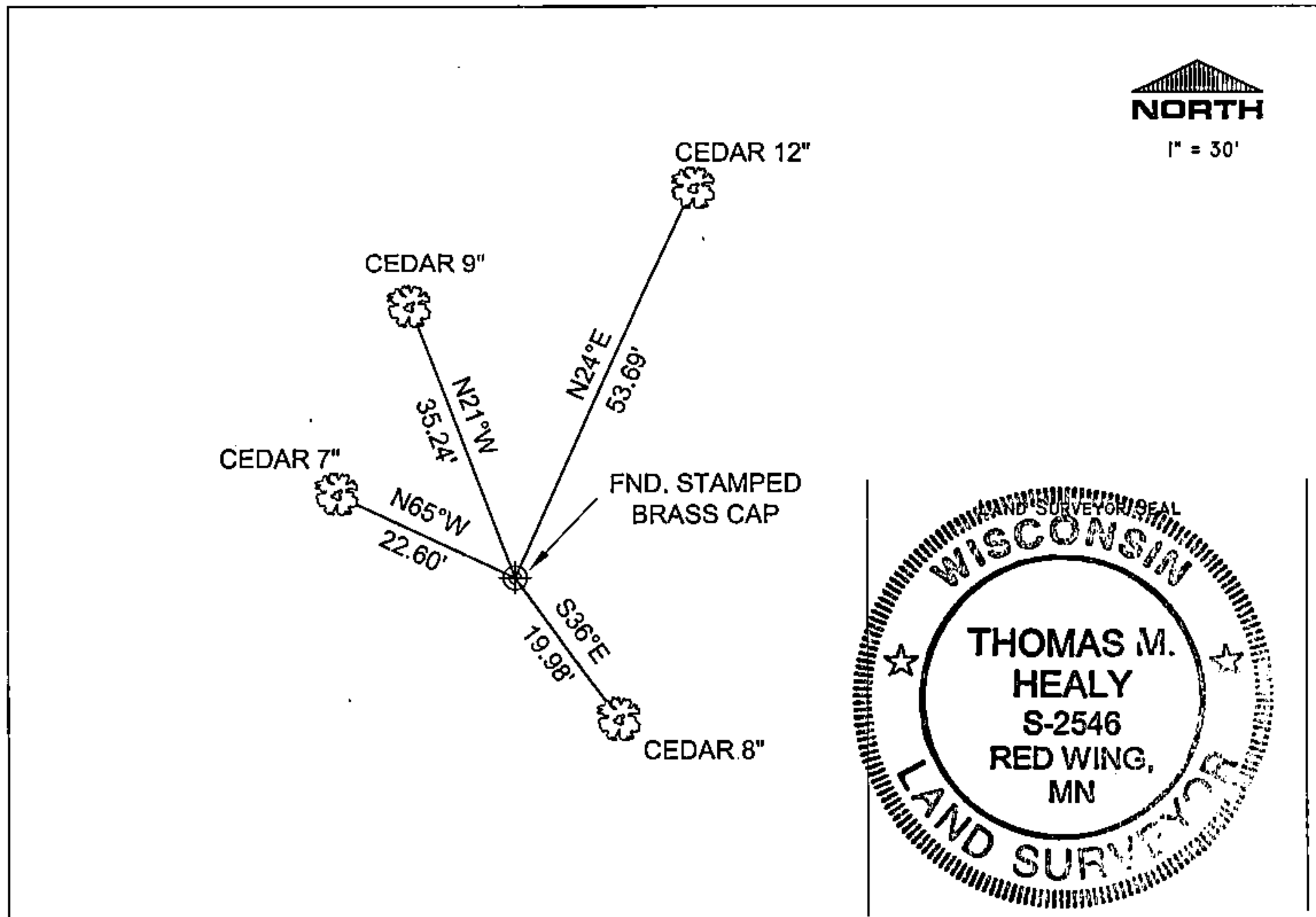
CEDAR 7" N65°W 22.60 FEET - SET NAIL IN TREE.
CEDAR 12" N24°E 53.69 FEET - SET NAIL IN TREE.

ALL TREES HAVE STUMP AND CHEST BLAZES.

THE SOUTH 1/4
CORNER OF SECTION 2,
T. 34 N., R. 15 E.,
FOREST COUNTY, WISCONSIN



⊕ = LOCATION OF CORNER



I, THOMAS M. HEALY R.L.S. 2546

(TYPE OR PRINT NAME) CERTIFY THAT THE CORNER LOCATION SHOWN ON THIS ABOVE RECORD WAS DETERMINED BY ME OR UNDER MY DIRECTION AND CONTROL AND THAT THIS U.S. PUBLIC LAND SURVEY MONUMENT RECORD IS CORRECT AND COMPLETE TO THE BEST OF MY KNOWLEDGE AND BELIEF.

INDEX No. E-19

Thomas M. Healy 11-17-05
SIGNATURE DATE

43415 02 0020

E-19