

U. S. PUBLIC LAND SURVEY MONUMENT RECORD

INSTRUCTIONS:

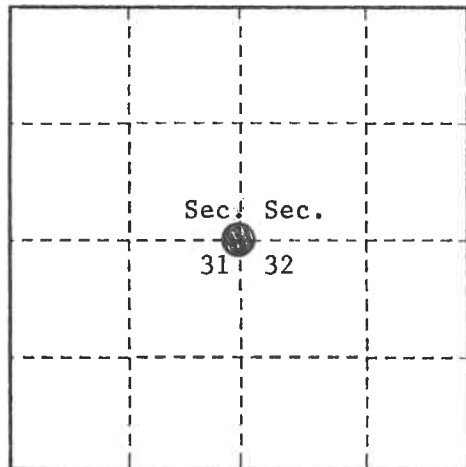
This record shall show the location of the corner and shall include all of the following nine elements (a through i).

- (a) Identify the corner by reference to the U.S. public land survey system.
- = Corner monument restored.

Quarter Corner to Sections 31 and 32,
T.34N. R.14E., Forest County, Wisconsin

State Plane Coordinates
Wisconsin North Zone
82266.13768-N
2281715.46113-E

Geographic Coordinates
45-23-08.44845-N
088-46-51.54893-W



- (b) Describe any record evidence, monument evidence, occupational evidence, testimonial evidence or any other material evidence you considered, and whether the monument was found or placed.

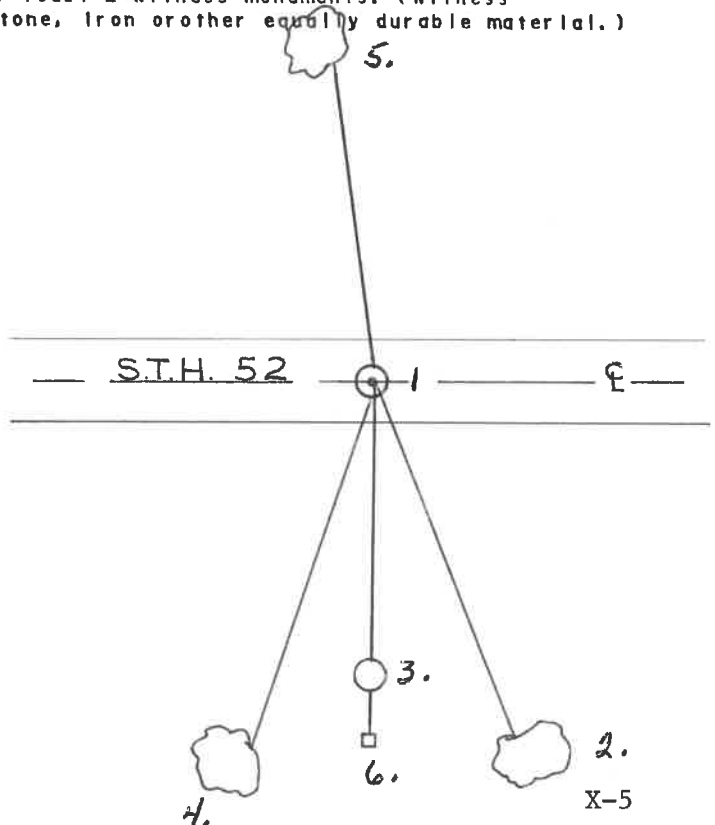
Original survey in 1859 by James McBride. Set wood post and the following bearing trees; Birch, 15", N.87°W., 11 links, Birch, 10", N.65°E., 32 links.

On 11-9-93, Alan Harrison, RLS, searched for corner evidence. No evidence was recovered. Restored the corner position on line between opposing Section Corners and in the Center-Line of State Hwy 52. Set a railroad spike flush with the surface of Hwy 52 to mark the corner position. Made new bearing trees as noted below.

- (c) In the plan view drawing below, provide reference ties to at least 4 witness monuments, or, if the location is within a municipality, to at least 2 witness monuments. (witness monuments shall be made of concrete, natural stone, iron or other equally durable material.)

- (d) Show a plan view drawing depicting the relevant monuments and reference ties which is sufficient in detail to enable accurate relocation of the corner monument if the corner monument is disturbed. Indicate north.

1. Railroad Spike in Center-Line of Hwy 52
2. Sugar, 9", S.23°E., 52.16 feet
3. 2½" x 36" Aluminum Monument for W.C. South, 33.58 feet
4. White Ash, 9", S.27°W., 54.40 feet
5. Sugar, 8", N.06°W, 58.70 feet
6. Steel Sign Post, 0.80 ft. South of W.C. monument.



(e) Describe any material discrepancy between the location of the corner as restored or reestablished and the location of that corner as previously restored or reestablished by distance and direction. Show the discrepancy on the plan view drawing under (d). above. Show the distances between the corner as previously restored or reestablished and (1) the corner as restored or reestablished, and (2) to at least 2 of the witness monuments shown on the drawing in (d), above.

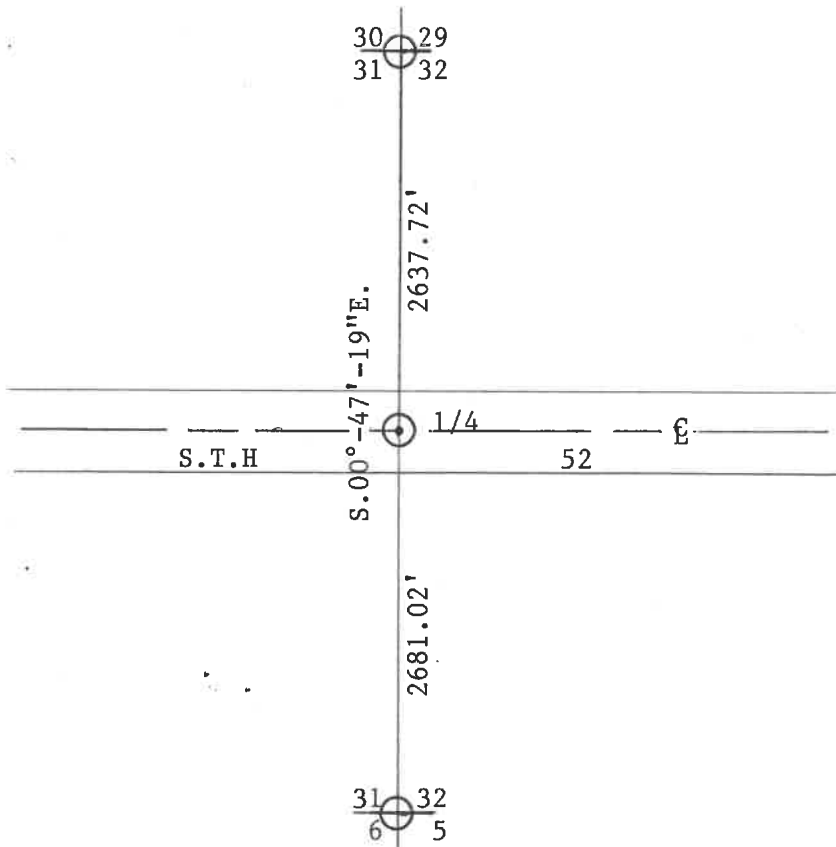
None

(f) Was the corner restored through acceptance of (1) an obliterated evidence location, or, (2) a found perpetuated location?

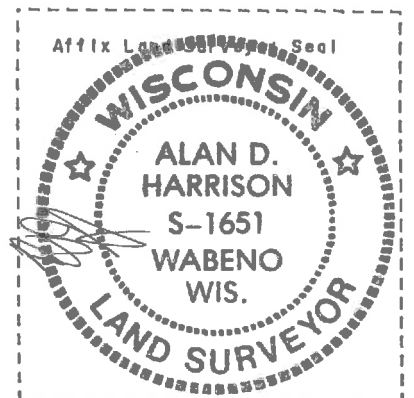
No

(g & h) Was the corner reestablished through lost corner proportionate methods? If so, show the method, including the directions and distances to other public land survey corners used as evidence or used for proportioning in determining the corner location?

Yes.



REGISTER'S OFFICE
 Forest County, Wis.
 Received for record this 23rd day
 of November, A.D., 19 94 at
9:02 o'clock A.M. and recorded
 in Vol. Gen. Restorations
 page 34-14; X-5
Sue Vap
 Register of Deeds



(1) I, Alan D. Harrison

(type or print name) certify that the corner location shown on this record was determined by me or under my direction and control and that this U.S. Public Land Survey Monument Record is correct and complete to the best of my knowledge and belief.

Alan D. Harrison 10/26/94
 Signature Date

CERTIFICATE READY FOR FILING:

Sue Vap
 District Ranger

Document Number
215240

REGISTER'S OFFICE
Forest County, Wis.
Received for record this 11th day
of September A.D., 2014 at
10:15 o'clock A.M. and recorded
in Vol. Corner Restoration
page X-5
Erika S. Deaton, Deputy
Register of Deeds

RS-7150-11 (9/1/66)

CERTIFIED LAND CORNER RESTORATION

State of Wisconsin }
County of Forest } ss.

I Randy R. Erickson, do hereby certify that on the 08 day of Sept, 2014
I found evidence of the West Quarter corner of Section 32
Township 34 North, Range 14 East, Fourth Principal Meridian, as described
hereon; and that from this evidence I established a new monument and accessories as described hereon to per-
petuate the original location of this corner:

Description of original monument and accessories and subsequent restorations:

1859 James McBride set a wood post and marked Bearing Trees:
Birch 15" N 87° W 11 lks Birch 10" N 65° 32 lks

1993 Al Harrison, RLS #1651 restored corner on line in center of road. set
a Rail Road Spike in road for corner. Set a 2 1/2" x 36" aluminum monument
33.58 feet South as a Reference monument. Marked Bearing Trees:

Sugar 9" S 23° E 52.16 feet White Ash 9" S 27° W 54.40 feet
Sugar 8" N 06° W 58.70 feet Steel Sign post 0.8 ft south of Reference
Monument.

Description of corner evidence found:

Recovered Rail Road Spike and accessories in place. Reference monument and
Bearing Trees South of Highway 52 need to be removed for trail construction.

Bearing Tree north of Highway 52 is still good.

Reference monument south of highway was damaged by brusher.

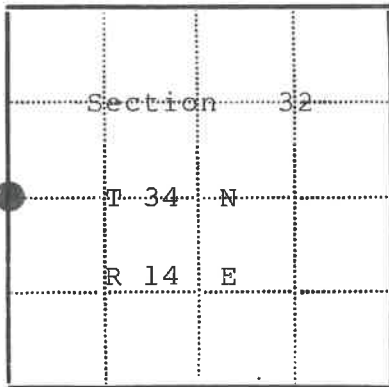
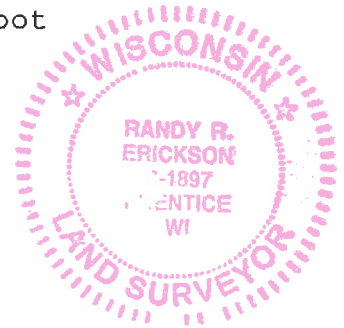
Description of monument and accessories I established to perpetuate the location of this corner:

set a 1" x 36" aluminum drive monument North 50.00 feet as a Witness Corner.

Marked an Oak Bearing Tree; 6" N 12° E 64.95 feet, Set a Steel Sign
post 1.40 feet North of Witness Corner monument.

Wisconsin North Zone State Plane Coordinates for Corner:

N 82266.138 E 2281715.461 NAD 83 1991 U.S. Foot



● - Corner monument restored
□ -

Resident witnesses.....

Dated at Park Falls Wisconsin, this 11 day of Sept
19 2014

Signature [Signature] Title Professional L.S.
(County Surveyor, Registered Land Surveyor, or other duly authorized official)

Surveyors Registration No. 1897

Office of.....County of.....

I hereby certify that the within instrument was filed in this office for record
on the.....day of.....19....., and was filed in Book
No.....Page No.....of County Records.

Signature.....Title.....

Township 34 N, Range 14 E, Section 32, Index No....., Page No.....

43414312000