

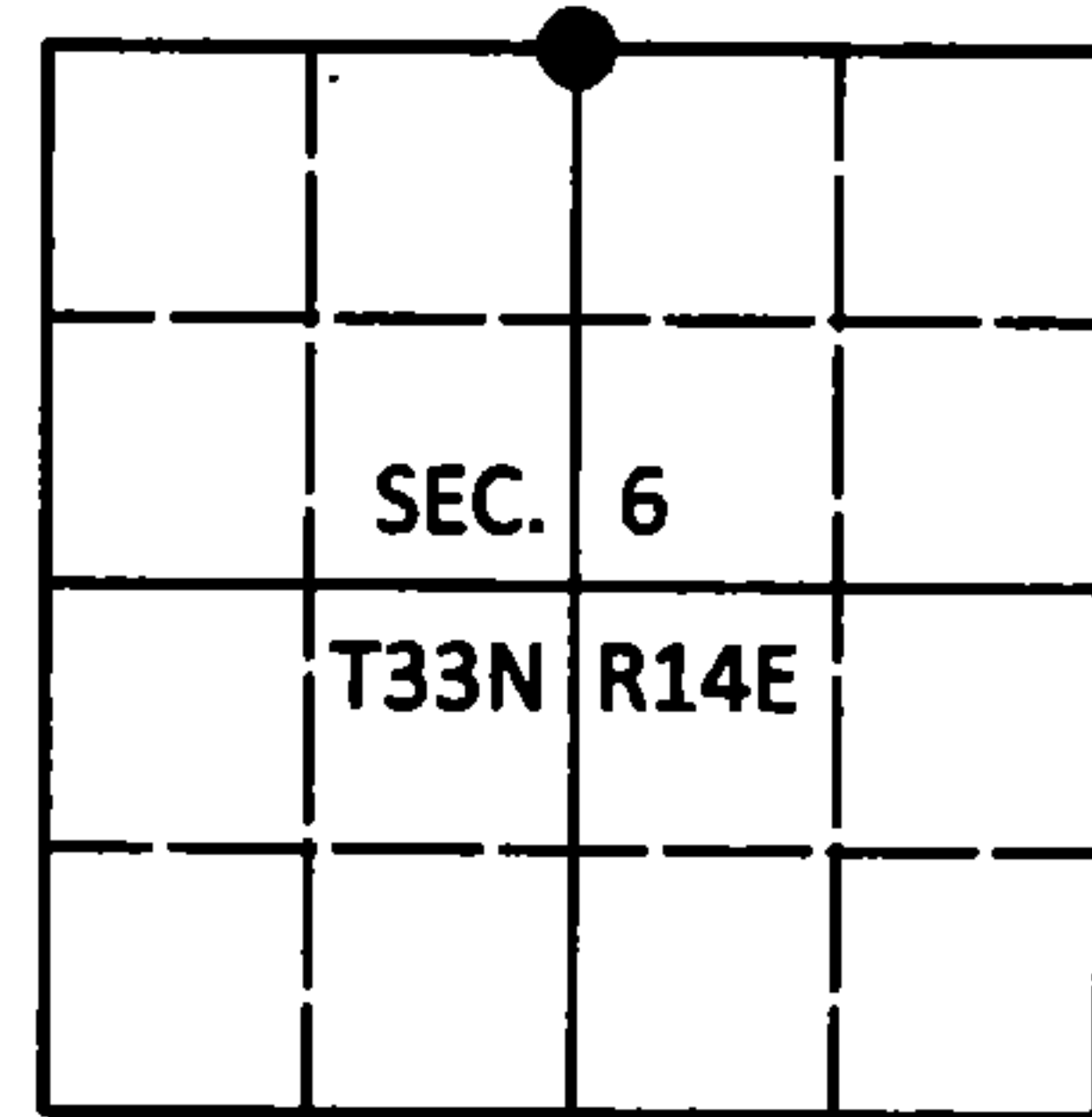
225161

U.S. PUBLIC LAND SURVEY MONUMENT RECORD

Note: This form is intended and designed to fulfill all requirements of Wisconsin Administrative Code, Chapter A-E 7.08 U.S. Public Land Survey Monument Record (3)(a-4).

(a) CORNER LOCATION
1/4 Cor. of Secs. 6 & 31
Township 33 & 34 North
Range 14 East of the 4th P.M.
Town of Wolf River/Freedom
County of Langlade/Forest

WISCORS - Langlade County
N: 427,181.19 USft
E: 713,177.87 USft
WISCORS - Forest County
N: 500,534.89 USft
E: 864,380.59 USft
Datum: NAD 83(2011)
GNSS Method: WISCORS RTN



(b) HISTORY OF ORIGINAL CORNER ESTABLISHMENT

Original Surveyor: Alfred Millard

Original Accessories:

Date of Survey Commenced: August, 1857
Completed: August, 1857

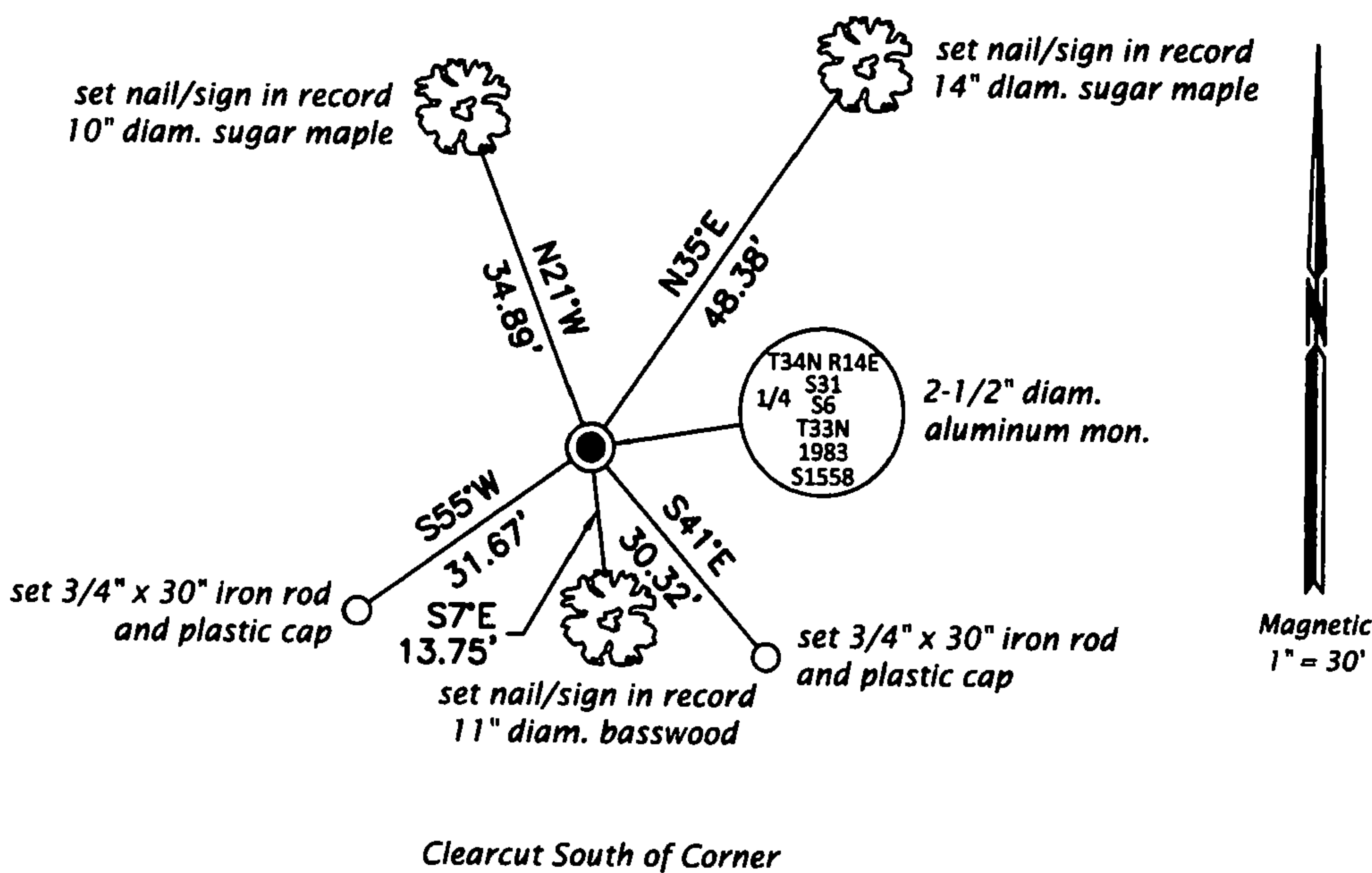
Sugar 10" N48°W, 23 lks.
Hemlock 14" S60°E, 16 lks.

(b)(f)(g)(h) Description of monument found at this corner and if it was accepted, state all evidence (material, testimonial, occupational, plats, records, other monuments) used as a basis for accepting. If not accepted or if nothing was found, state evidence used as basis for establishing location. If re-established through lost corner proportionate methods, indicate all monuments, distances and directions used to establish. Indicate type of monument and sign post found or set.

This is a perpetuation of a previous USPLS Monument Record by Milo E. Stefan, RLS dated February 19, 1985 and filed in the office of the Langlade County Surveyor. A complete history of the corner can be found on the previous monument record. I accept the previous location as a true and faithful perpetuation or reestablishment of the original corner location and further perpetuate it as follows.

November 6, 2016: I found and accepted the record monument, a 2-1/2" diam. aluminum pipe with a 3-1/4" diam. aluminum cap projecting 8" above the ground surface. I set a DEEP-1 magnet adjacent to the monument. I found or established accessories as shown below. A USFS steel sign post bears East, 2.2 ft. I set a white vinyl sign post bearing Southwest, 1.1 ft.

(c)(d)(e) Plan view of corner with ties to at least 4 witness monuments. If in disagreement with previously established corner, show the distances between the two corners and also indicate the ties to the disputed.



FOREST COUNTY, WI
CORTNEY BRITTEN CLEEREMAN
REGISTER OF DEEDS
RECEIVED FOR RECORD

APR 27 2018

Time: 10:00A.M.
Vol.: Corner Restoration
Page Number: 2-3

(i) I, Jeffrey W. Austin, Professional Land Surveyor No. S-1885, hereby certify that the corner location on this record was determined by me or under my direction and control and that this U.S. Public Land Survey Monument Record is correct and complete to the best of my knowledge and belief.



Handwritten signature of Jeffrey W. Austin.

MAY 4, 2017
Date

3414310020 (INDEX NO. A-3)

43414310020

Forest Co.

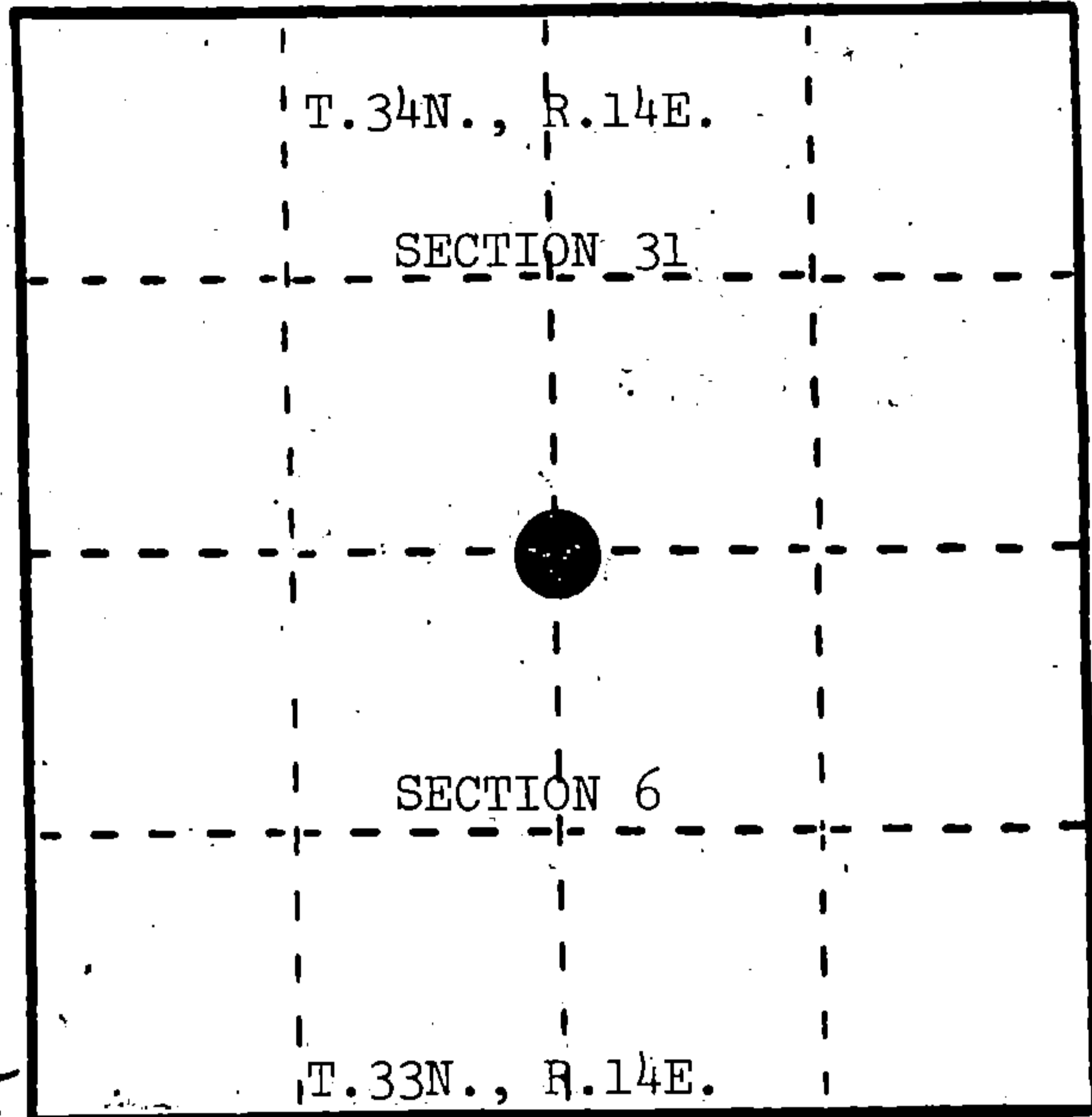
U. S. PUBLIC LAND SURVEY MONUMENT RECORD

INSTRUCTIONS: This record shall show the location of the corner and shall include all of the following nine elements (a through i).

(a) Identify the corner by reference to the U.S. public land survey system.

○ = Corner monument restored.

Quarter corner to Sections 31 and 6, T.33-34N., R.14E.



REGISTER'S OFFICE  
Forest County, Wis.  
Received for record this 15th day  
of April A.D., 1985 at  
3:10 o'clock P.M. and recorded  
in Vol. CORNER RESTORATIONS  
page 2-3  
Paul Aschenbrauner  
Register of Deeds

(b) Describe any record evidence, monument evidence, occupational evidence, testimonial evidence or any other material evidence you considered, and whether the monument was found or placed.

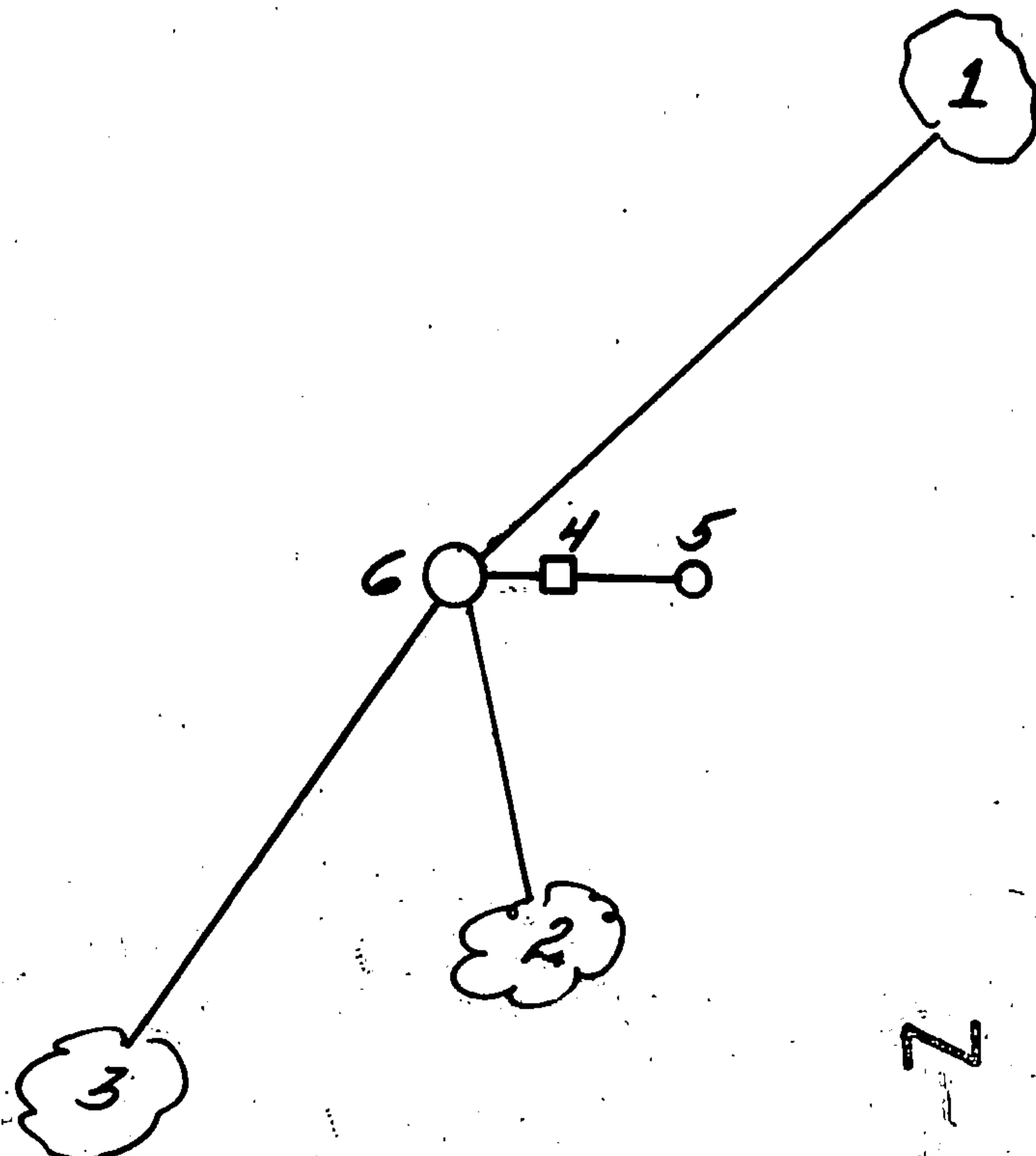
June, 1857, Alfred Millard set wood post and made the following BTs: Hemlock, 14", S.60°E., 16 links; Sugar, 10", N.48°W., 23 links.

April, 1984, Milo Stefan restored corner position from the remains of the original bearing trees.

(c) In the plan view drawing below, provide reference ties to at least 4 witness monuments, or, if the location is within a municipality, to at least 2 witness monuments. (Witness monuments shall be made of concrete, natural stone, iron or other equally durable material.) Describe witness monuments.

(d) Show a plan view drawing depicting the relevant monuments and reference ties which is sufficient in detail to enable accurate relocation of the corner monument if the corner monument is disturbed. Indicate north.

1. Sugar, 10", N.37°E., 48.39 feet
2. Basswood, 6", S.6°E., 13.84 feet
3. Sugar, 7", N.18°W., 35.18 feet
4. Steel Sign Post, East, 2.30 feet
5. Squared Wood Post, East, 10.00 feet
6. 2" x 36" aluminum monument stamped to identify the corner.



- (e) Describe any material discrepancy between the location of the corner as restored or reestablished and the location of that corner as previously restored or reestablished by distance and direction. Show the discrepancy on the plan view drawing under (d), above. Show the distances between the corner as previously restored or reestablished and (1) the corner as restored or reestablished, and (2) to at least 2 of the witness monuments shown on the drawing in (d), above.

Squared wood post of unknown origin appears to be at proportional position between township corner and Kimberly Clark corner to Sections 31, 32, 5, and 6, which was erroneously positioned.

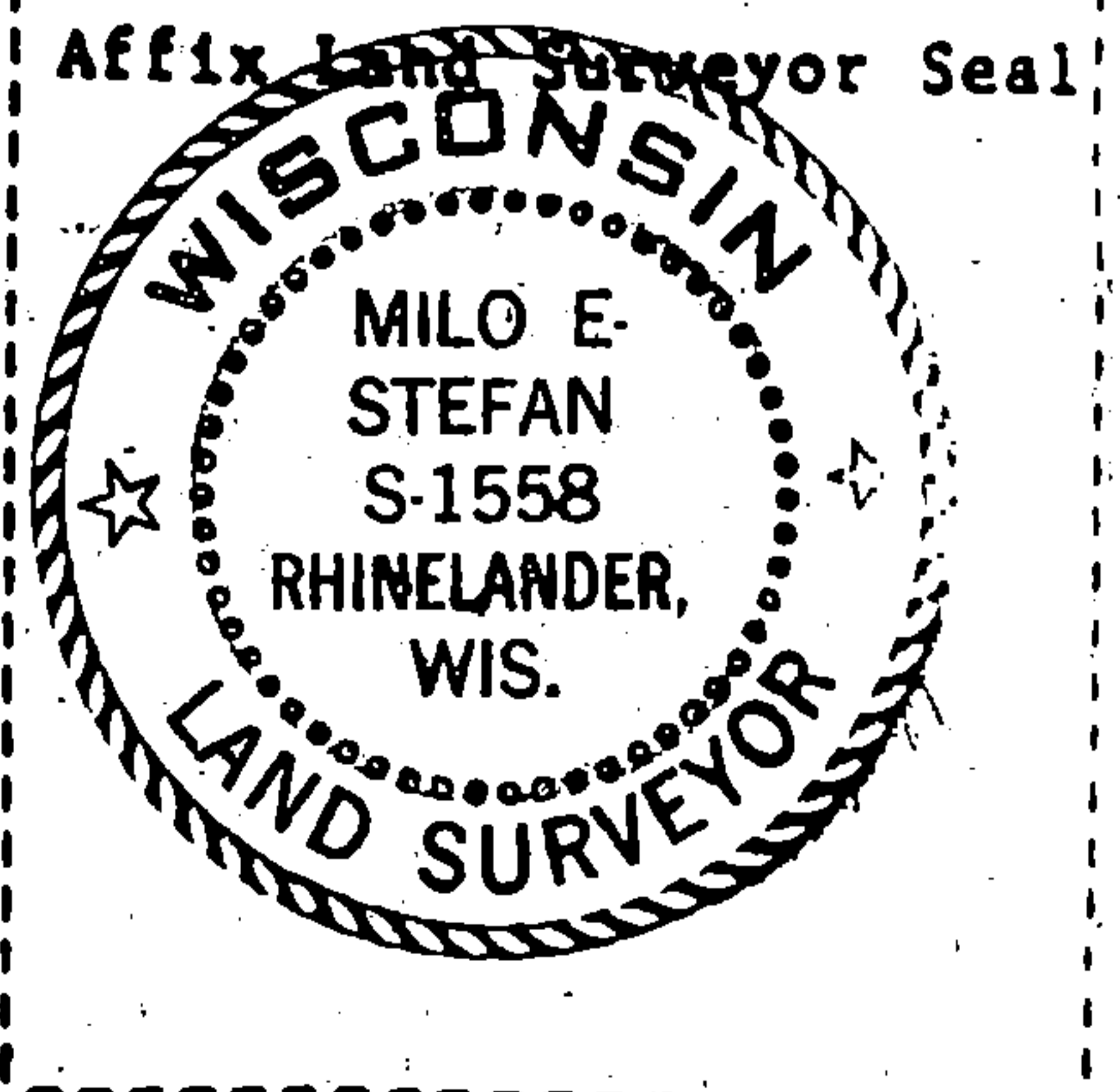
- (f) Was the corner restored through acceptance of (1) an obliterated evidence location, or, (2) a found perpetuated location?

(1) an obliterated evidence location.

- (g&h) Was the corner reestablished through lost corner proportionate methods? If so, show the method, including the directions and distances to other public land survey corners used as evidence or used for proportioning in determining the corner location?

No.

Affix Land Surveyor Seal



(i) I, Milo E. Stefan

(type or print name) certify that the corner location shown on this record was determined by me or under my direction and control and that this U.S. Public Land Survey Monument Record is correct and complete to the best of my knowledge and belief.

Milo E. Stefan  
Signature

01/19/85  
Date