

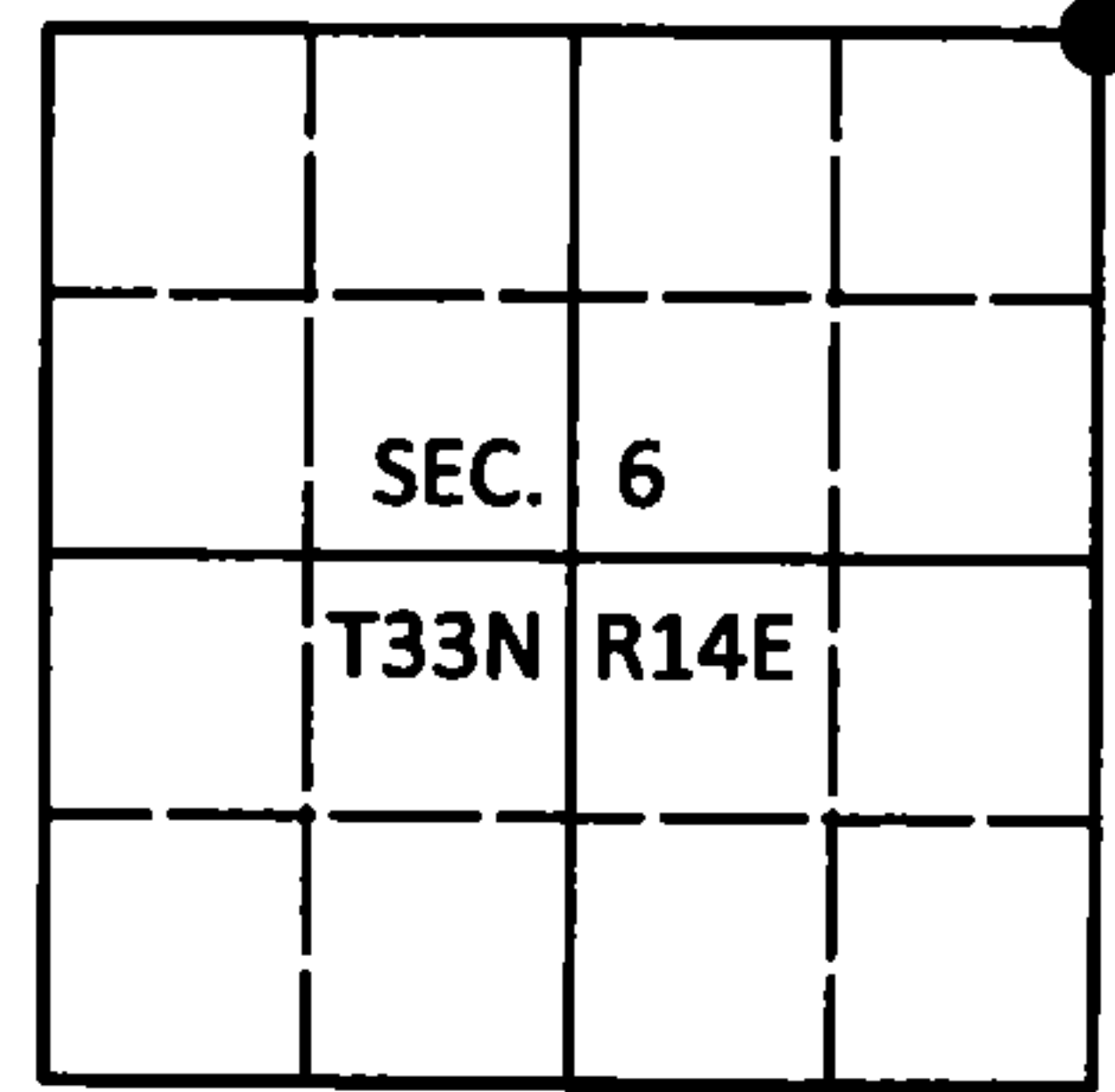
225162

U.S. PUBLIC LAND SURVEY MONUMENT RECORD

Note: This form is intended and designed to fulfill all requirements of Wisconsin Administrative Code, Chapter A-E 7.08 U.S. Public Land Survey Monument Record (3)(a-1).

(a) CORNER LOCATION
Cor. of Secs. 5, 6, 31 & 32
Township 33 & 34 North
Range 14 East of the 4th P.M.
Town of Wolf River/Freedom
County of Langlade/Forest

WISCRS - Langlade County
N: 427,220.16 USft
E: 715,847.42 USft
WISCRS - Forest County
N: 500,560.62 USft
E: 867,050.30 USft
Datum: NAD 83(2011)
GNSS Method: WISCORS RTN



(b) HISTORY OF ORIGINAL CORNER ESTABLISHMENT

Original Surveyor: Alfred Millard

Original Accessories:

Date of Survey Commenced: August, 1857
Completed: August, 1857

Hemlock 28" S55°E, 40 lks.
Y. Birch 14" S45°W, 48 lks.
Hemlock 16" N43°W, 38 lks.
Hemlock 14" N60°E, 58 lks.

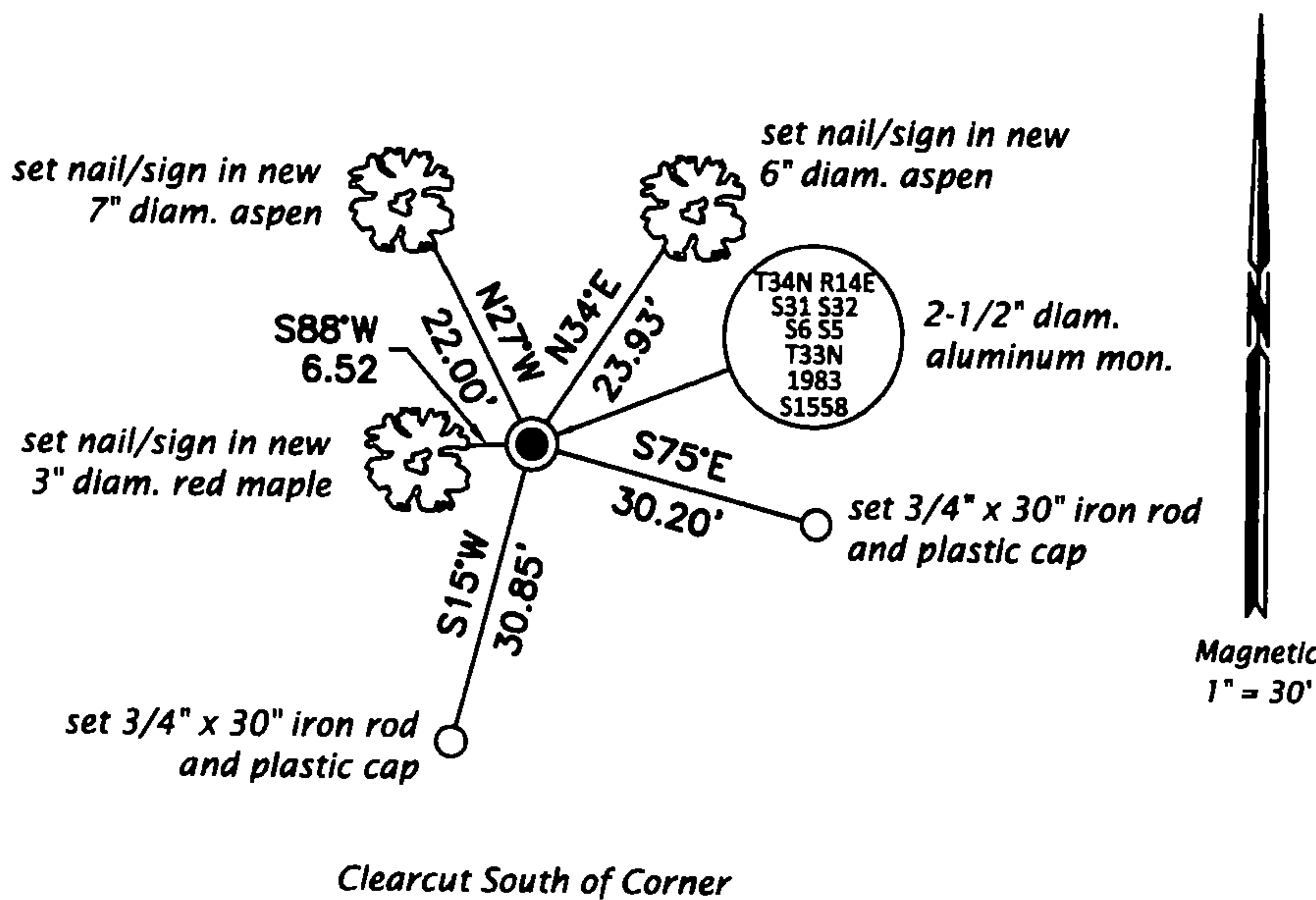
(b)(f)(g)(h) Description of monument found at this corner and if it was accepted, state all evidence (material, testimonial, occupational, plats, records, other monuments) used as a basis for accepting. If not accepted or if nothing was found, state evidence used as basis for establishing location. If re-established through lost corner proportionate methods, indicate all monuments, distances and directions used to establish. Indicate type of monument and sign post found or set.

This is a perpetuation of a previous USPLS Monument Record by Milo E. Stefan, RLS dated February 19, 1985 and filed in the office of the Langlade County Surveyor. A complete history of the corner can be found on the previous monument record. I accept the previous location as a true and faithful perpetuation or reestablishment of the original corner location and further perpetuate it as follows.

This is a perpetuation of a previous USPLS Monument Record by Alan D. Harrison, RLS dated October 26, 1994 and filed in the office of the Langlade County Surveyor. A complete history of the corner can be found on the previous monument record. I accept the previous location as a true and faithful perpetuation or reestablishment of the original corner location and further perpetuate it as follows.

November 6, 2016: I found and accepted the record monument, a 2-1/2" diam. aluminum pipe with a 3-1/4" diam. aluminum cap projecting 14" above the ground surface. I set a DEEP-1 magnet adjacent to the monument. All record bearing trees are gone or standing dead. I established accessories as shown below. A USFS steel sign post bears West, 1.8 ft. I set a white vinyl sign post bearing West, 0.8 ft.

(c)(d)(e) Plan view of corner with ties to at least 4 witness monuments. If in disagreement with previously established corner, show the distances between the two corners and also indicate the ties to the disputed.



FOREST COUNTY, WI
CORTNEY BRITTEN CLEEREMAN
REGISTER OF DEEDS
RECEIVED FOR RECORD

APR 27 2018

Time: 10:00 A.M.
Vol.: Corner Restoration
Page Number: 2-5



(i) I, Jeffrey W. Austin, Professional Land Surveyor No. S-1885, hereby certify that the corner location on this record was determined by me or under my direction and control and that this U.S. Public Land Survey Monument Record is correct and complete to the best of my knowledge and belief.

Handwritten signature of Jeffrey W. Austin.

Handwritten date: May 4, 2017

3414310000 (INDEX NO. A-5)

43414310000

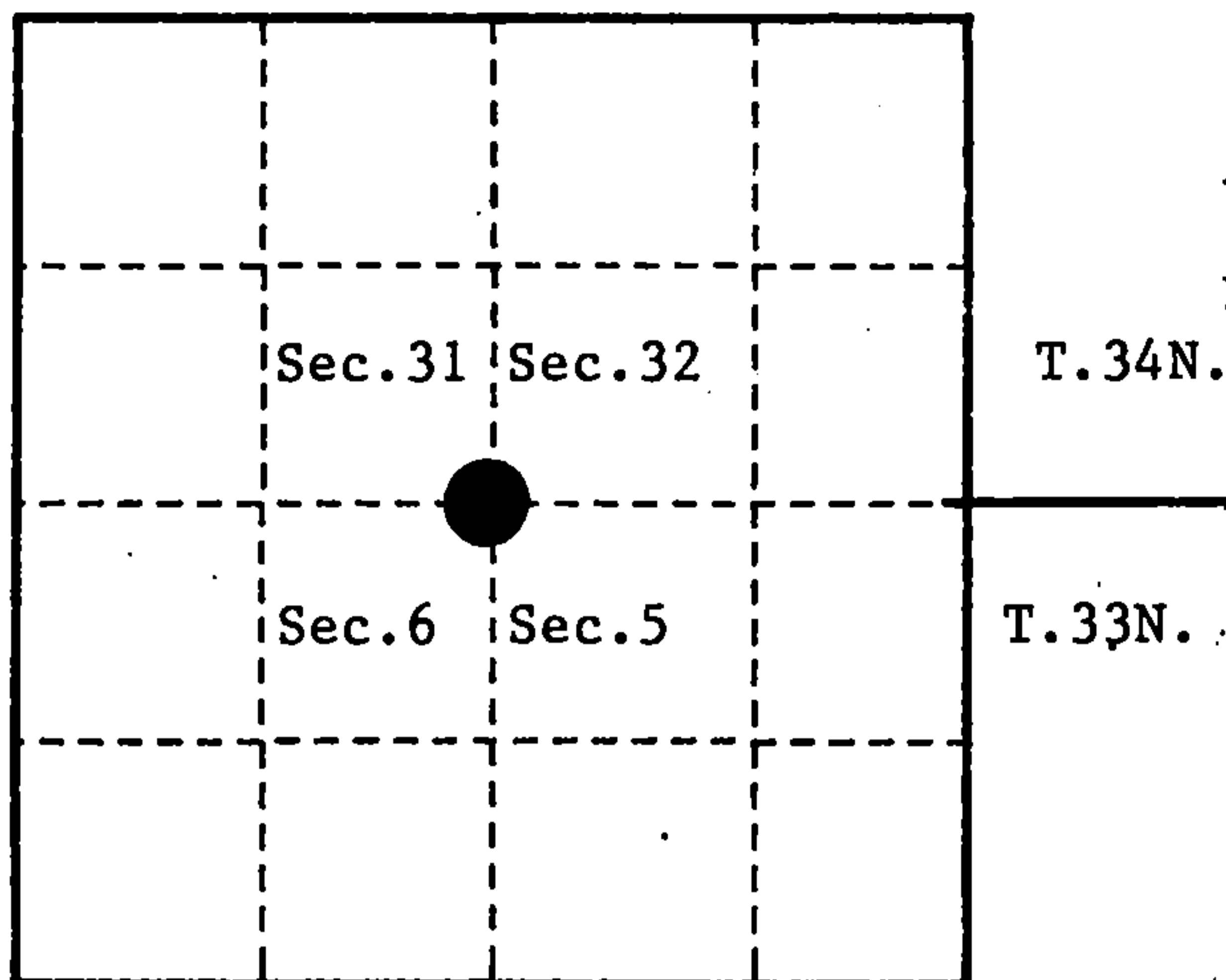
U. S. PUBLIC LAND SURVEY MONUMENT RECORD

INSTRUCTIONS:

This record shall show the location of the corner and shall include all of the following nine elements (a through i).

- (a) Identify the corner by reference to the U.S. public land survey system.  
 ○ - Corner monument restored.

Section Corner to Sections 5, 6, 31, and 32, T.33-34N., R.14E., Forest and Langlade Counties, WI.



State Plane Coordinates  
 Wisconsin North Zone  
 79585.37562-N  
 2281752.35877-E

Geographic Coordinates  
 45-22-41.97973-N  
 088-46-51.60845-W

- (b) Describe any record evidence, monument evidence, occupational evidence, testimonial evidence or any other material evidence you considered, and whether the monument was found or placed.

Original survey in 1857 by Alfred Millard. Set wood post and the following bearing trees; Hemlock, 28", S.55°E., 40 links, Yellow Birch, 14", S.45°W., 48 links, Hemlock, 16", N.43°W., 38 links, Hemlock, 14", N.60°E., 58 links.

In 1962 Neal Spearhake set an aluminum monument (KImberly Clark) off a scribed bearing tree. See "e" on reverse side.

In 1983, Milo Stefan, R.L.S., restored the corner from the remains of 3 original bearing tree stumps. Set a 2" x 36" aluminum monument with a tablet stamped to identify corner. Blazed and scribed new bearing trees; Balsam, 8", N.36°E., 30.60 feet, Aspen, 6", S.70°E., 27.38 feet, Balsam, 3", S.13°W., 6.70 feet, Balsam, 7", N.30°W., 15.26 feet, Steel sign post, West, 1.87 feet. Kimberly-Clark monument, S.37°E., 5.80 feet.

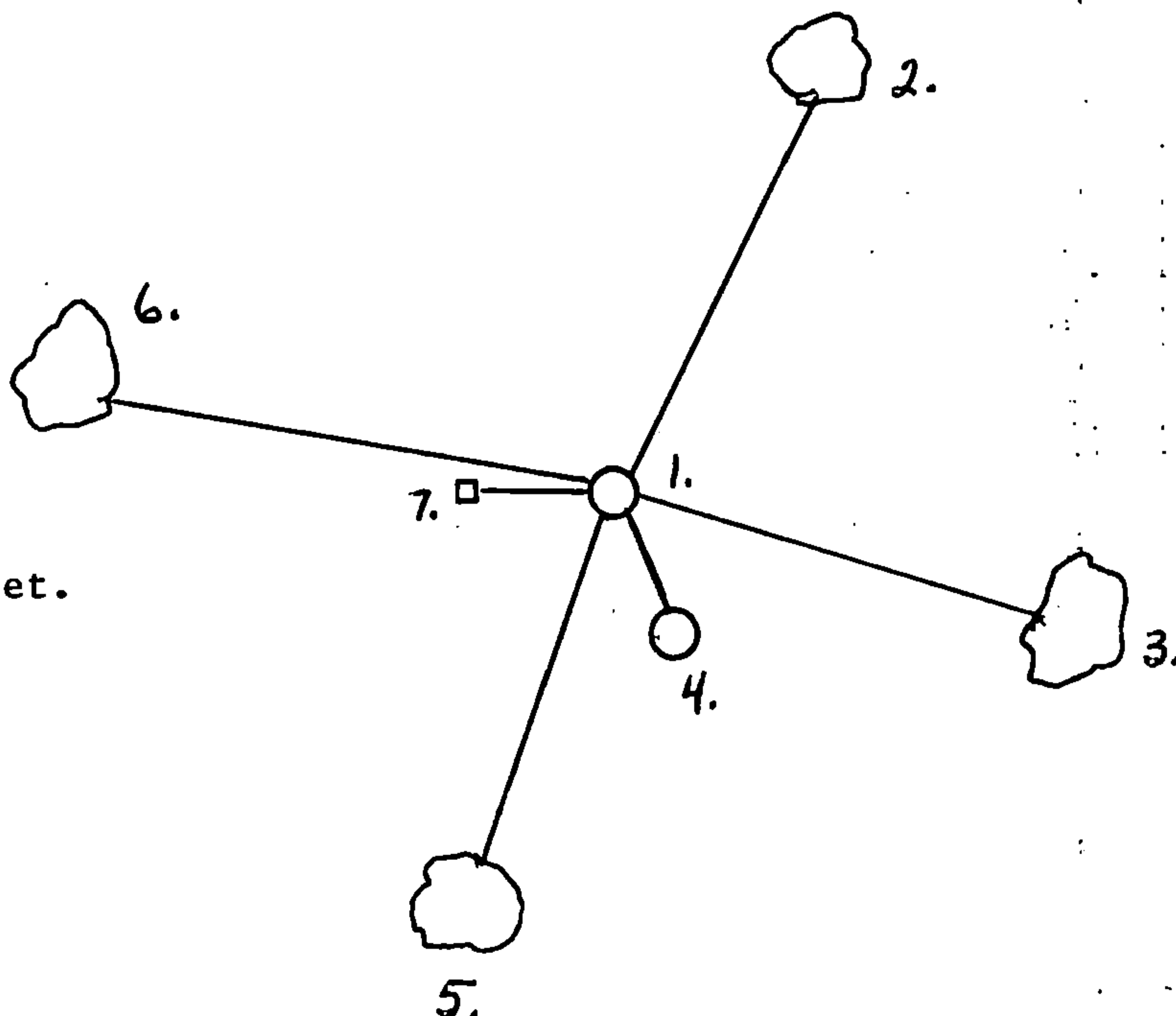
On March 26 1991, Alan Harrison, R.L.S., found monument and bearing trees as set in 1983. Northwest bearing tree is dead. Made 1 new bearing tree; Balsam, 8", S.55°W., 26.50 feet.

On November 1 1993, Alan Harrison, R.L.S., found monument and bearing trees as set in 1983 and 1991. Cut down all but the Northeast bearing tree. Blazed and scribed 3 new bearing trees; Aspen, 7", S.69°E., 42.19 feet, Aspen, 8", S.17°W., 32.60 feet, Balsam, 9", N.83°W., 63.79 feet.

- (c) In the plan view drawing below, provide reference ties to at least 4 witness monuments, or, if the location is within a municipality, to at least 2 witness monuments. (witness monuments shall be made of concrete, natural stone, iron or other equally durable material.)

- (d) Show a plan view drawing depicting the relevant monuments and reference ties which is sufficient in detail to enable accurate relocation of the corner monument if the corner monument is disturbed. Indicate north.

1. 2" x 36" aluminum monument with tablet stamped to identify corner.
2. Balsam, 8", N.36°E., 30.60 feet.
3. Aspen, 7", S.69°E., 42.19 feet.
4. Kimberly-Clark Monument, S.37°E., 5.80 feet.
5. Aspen, 8", S.17°W., 32.60 feet.
6. Balsam, 9", N.83°W., 63.79 feet.
7. Steel sign post, West, 1.87 feet.





(e) Describe any material discrepancy between the location of the corner as restored or reestablished and the location of that corner as previously restored or reestablished by distance and direction. Show the discrepancy on the plan view drawing under (d). above. Show the distances between the corner as previously restored or reestablished and (1) the corner as restored or reestablished, and (2) to at least 2 of the witness monuments shown on the drawing in (d), above.

Kimberly-Clark monument was set from a resurvey bearing tree, origin unknown, which resulted in Kimberly-Clark monument being S.37°E., 5.80 feet from original corner position.

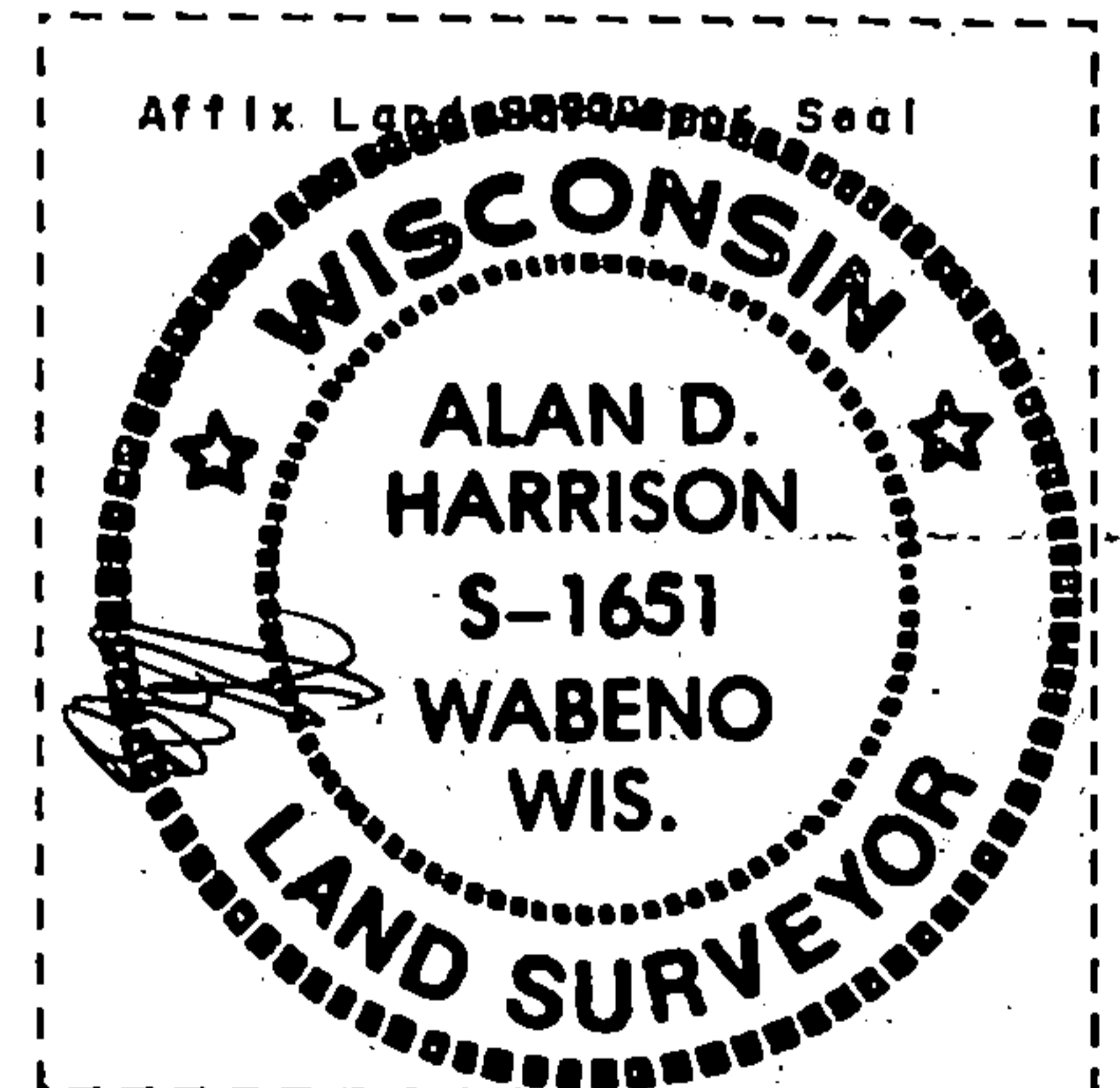
(f) Was the corner restored through acceptance of (1) an obliterated evidence location, or, (2) a found perpetuated location?

(1)

(g & h) Was the corner reestablished through lost corner proportionate methods? If so, show the method, including the directions and distances to other public land survey corners used as evidence or used for proportioning in determining the corner location?

No

REGISTER'S OFFICE  
Forest County, Wis.  
Received for record this 23<sup>rd</sup> day  
of December A.D. 1994 at  
9:00 o'clock A. M. and recorded  
in Vol. Conu Restorations  
page 34-14:2-5  
Paul Chillo Deputy  
Register of Deeds



(1) I, Alan D. Harrison

(type or print name) certify that the corner location shown on this record was determined by me or under my direction and control and that this U.S. Public Land Survey Monument Record is correct and complete to the best of my knowledge and belief.

Alan D. Harrison 10/26/94  
Signature Date

CERTIFICATE READY FOR FILING:

Sue Vap  
District Ranger

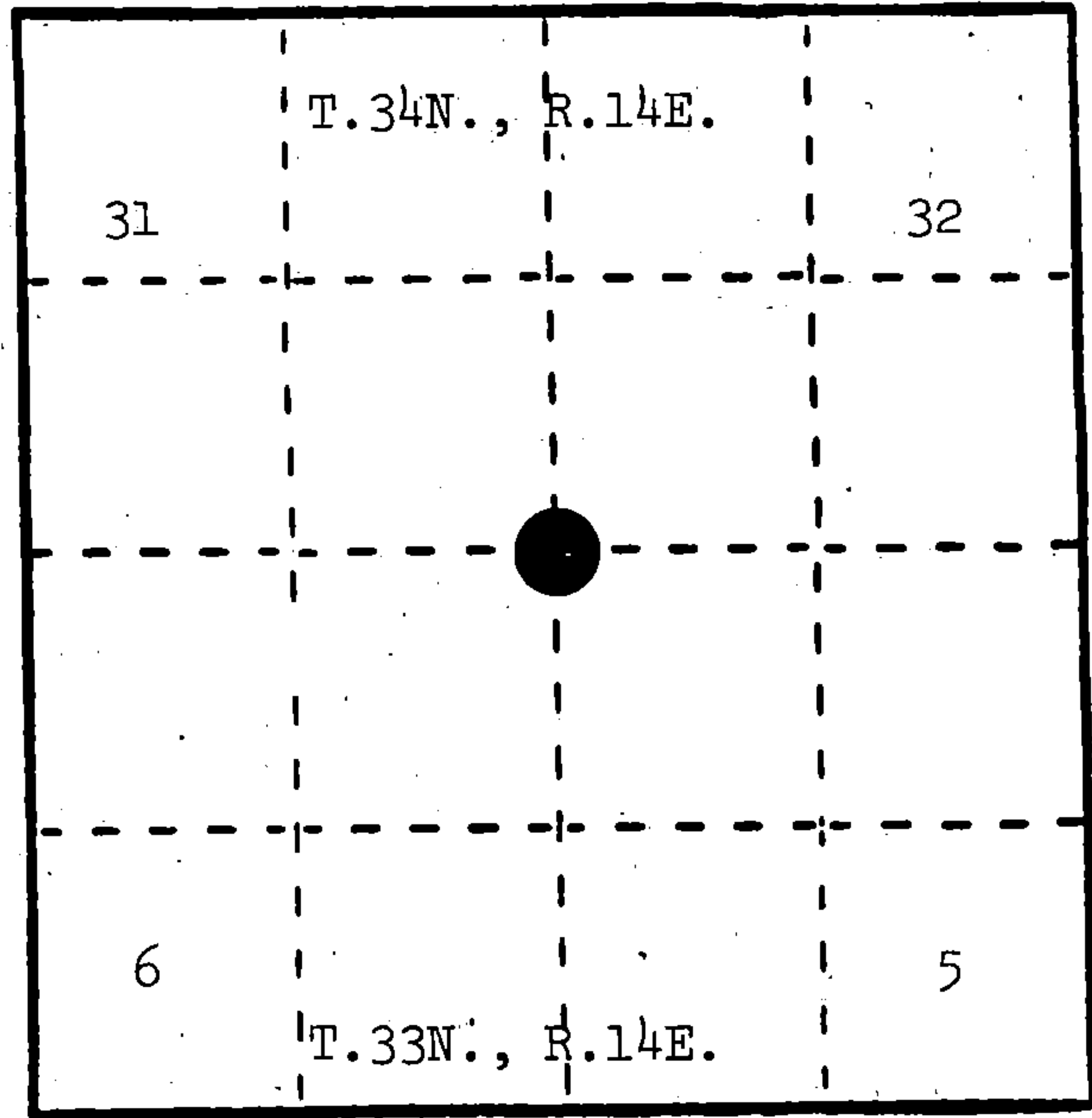
U. S. PUBLIC LAND SURVEY MONUMENT RECORD

INSTRUCTIONS: This record shall show the location of the corner and shall include all of the following nine elements (a through i).

(a) Identify the corner by reference to the U.S. public land survey system.

○ = Corner monument restored.

Section corner to Sections 5, 6, 31, and 32, T.33-34N., R.14E.



REGISTER'S OFFICE  
Forest County, Wis.  
Received for record this 15th day  
of April A.D., 1985 at  
3:10 o'clock A.M. and recorded  
in Vol. CORNER RESTORATIONS  
page 2-5  
Paul Aschenbrenner  
Register of Deeds

(b) Describe any record evidence, monument evidence, occupational evidence, testimonial evidence or any other material evidence you considered, and whether the monument was found or placed.

In June, 1857, Alfred Millard set wood post and made the following BTs: Hemlock, 28", S.55°E., 40 links; Yellow Birch, 14", S.45°W., 48 links; Hemlock, 16", N.43°W., 38 links; Hemlock, 14", N.60°E., 58 links.

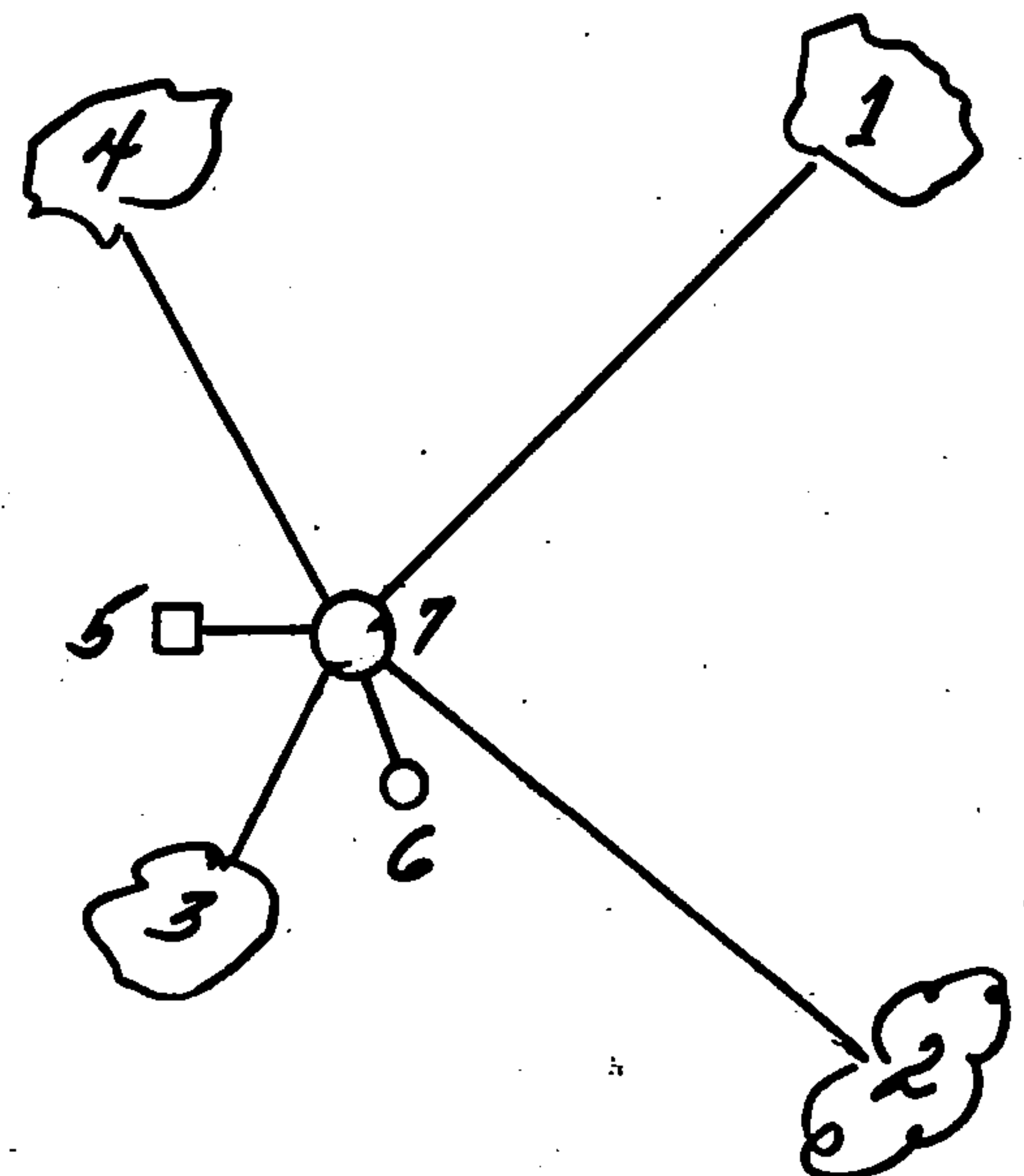
1962, Neal Spearhake set aluminum monument (Kimberly Clark) off scribed bearing tree-- see "e" on reverse side.

In April, 1984, Milo Stefan restored corner position from the remains of the original bearing tree stumps.

(c) In the plan view drawing below, provide reference ties to at least 4 witness monuments, or, if the location is within a municipality, to at least 2 witness monuments. (Witness monuments shall be made of concrete, natural stone, iron or other equally durable material.) Describe witness monuments.

(d) Show a plan view drawing depicting the relevant monuments and reference ties which is sufficient in detail to enable accurate relocation of the corner monument if the corner monument is disturbed. Indicate north.

1. Balsam, 8", N.36°E., 30.60 feet
2. Aspen, 6", S.70°E., 27.38 feet
3. Balsam, 3", S.13°W., 6.70 feet
4. Balsam, 7", N.30°W., 15.26 feet
5. Steel Sign Post, West, 1.87 feet
6. Kimberly Clark monument, S.37°E., 5.80 feet
7. 2" x 36" aluminum monument stamped to identify the corner.



- (e) Describe any material discrepancy between the location of the corner as restored or reestablished and the location of that corner as previously restored or reestablished by distance and direction. Show the discrepancy on the plan view drawing under (d), above. Show the distances between the corner as previously restored or reestablished and (1) the corner as restored or reestablished, and (2) to at least 2 of the witness monuments shown on the drawing in (d), above.

Kimberly Clark monument was set from resurvey bearing tree, origin unknown, which resulted in Kimberly Clark corner position being S.37°E., 5.8 feet from original corner position.

- (f) Was the corner restored through acceptance of (1) an obliterated evidence location, or, (2) a found perpetuated location?

(1) an obliterated evidence location.

- (g&h) Was the corner reestablished through lost corner proportionate methods? If so, show the method, including the directions and distances to other public land survey corners used as evidence or used for proportioning in determining the corner location?

Affix Land Surveyor Seal



(i) Milo E. Stefan

(Type or print name) certify that the corner location shown on this record was determined by me or under my direction and control and that this U.S. Public Land Survey Monument Record is correct and complete to the best of my knowledge and belief.

Milo E. Stefan  
Signature

8/19/85  
Date



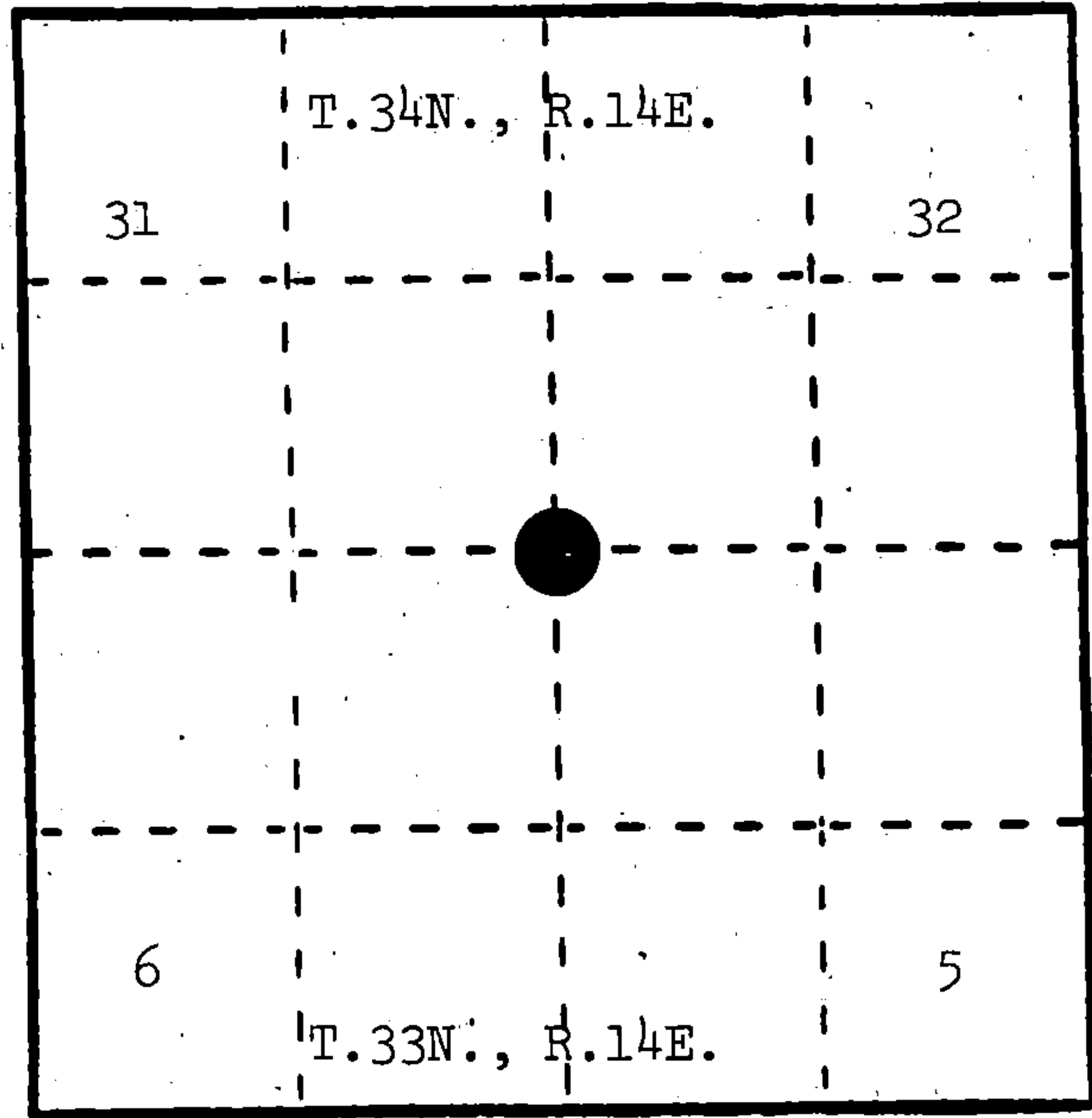
# U. S. PUBLIC LAND SURVEY MONUMENT RECORD

**INSTRUCTIONS:** This record shall show the location of the corner and shall include all of the following nine elements (a through i).

(a) Identify the corner by reference to the U.S. public land survey system.

○ = Corner monument restored.

Section corner to Sections 5, 6, 31, and 32, T.33-34N., R.14E.



REGISTER'S OFFICE  
 Forest County, Wis.  
 Received for record this 15<sup>th</sup> day  
 of April A.D., 1985 at  
3:10 o'clock A.M. and recorded  
 in Vol. CORNER RESTORATIONS  
 page 2-5  
*Paul Aschenbrenner*  
 Register of Deeds

(b) Describe any record evidence, monument evidence, occupational evidence, testimonial evidence or any other material evidence you considered, and whether the monument was found or placed.

In June, 1857, Alfred Millard set wood post and made the following BTs: Hemlock, 28", S.55°E., 40 links; Yellow Birch, 14", S.45°W., 48 links; Hemlock, 16", N.43°W., 38 links; Hemlock, 14", N.60°E., 58 links.

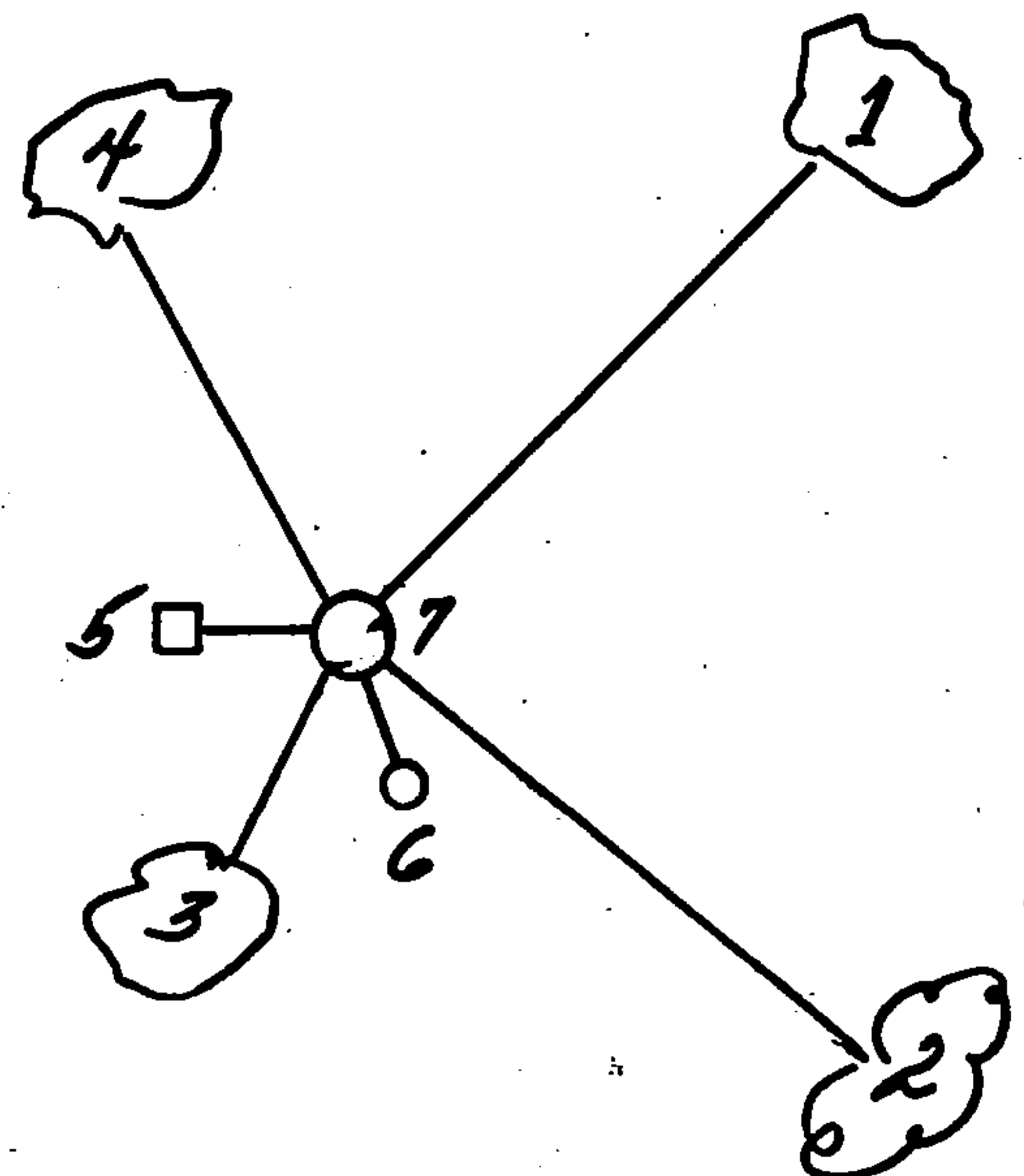
1962, Neal Spearhake set aluminum monument (Kimberly Clark) off scribed bearing tree-- see "e" on reverse side.

In April, 1984, Milo Stefan restored corner position from the remains of the original bearing tree stumps.

(c) In the plan view drawing below, provide reference ties to at least 4 witness monuments, or, if the location is within a municipality, to at least 2 witness monuments. (Witness monuments shall be made of concrete, natural stone, iron or other equally durable material.) Describe witness monuments.

(d) Show a plan view drawing depicting the relevant monuments and reference ties which is sufficient in detail to enable accurate relocation of the corner monument if the corner monument is disturbed. Indicate north.

1. Balsam, 8", N.36°E., 30.60 feet
2. Aspen, 6", S.70°E., 27.38 feet
3. Balsam, 3", S.13°W., 6.70 feet
4. Balsam, 7", N.30°W., 15.26 feet
5. Steel Sign Post, West, 1.87 feet
6. Kimberly Clark monument, S.37°E., 5.80 feet
7. 2" x 36" aluminum monument stamped to identify the corner.



- (e) Describe any material discrepancy between the location of the corner as restored or reestablished and the location of that corner as previously restored or reestablished by distance and direction. Show the discrepancy on the plan view drawing under (d), above. Show the distances between the corner as previously restored or reestablished and (1) the corner as restored or reestablished, and (2) to at least 2 of the witness monuments shown on the drawing in (d), above.

Kimberly Clark monument was set from resurvey bearing tree, origin unknown, which resulted in Kimberly Clark corner position being S.37°E., 5.8 feet from original corner position.

- (f) Was the corner restored through acceptance of (1) an obliterated evidence location, or, (2) a found perpetuated location?

(1) an obliterated evidence location.

- (g&h) Was the corner reestablished through lost corner proportionate methods? If so, show the method, including the directions and distances to other public land survey corners used as evidence or used for proportioning in determining the corner location?

Affix Land Surveyor Seal



(i) Milo E. Stefan

(Type or print name) certify that the corner location shown on this record was determined by me or under my direction and control and that this U.S. Public Land Survey Monument Record is correct and complete to the best of my knowledge and belief.

Milo E. Stefan  
Signature

8/19/85  
Date



CERTIFIED LAND CORNER RESTORATION

88934

Index No. **Z 5 207**

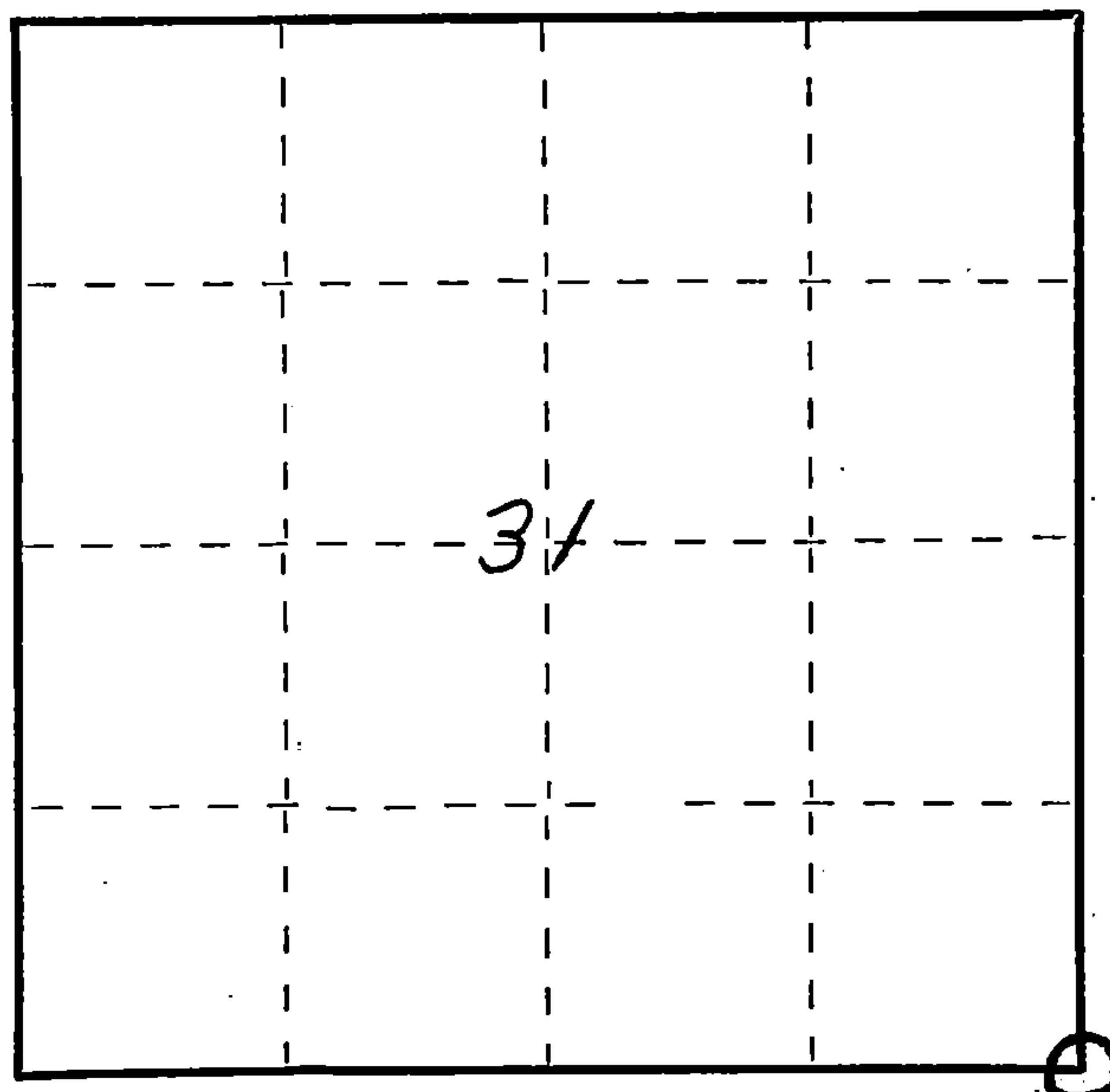
State of Wisconsin }  
County of FOREST } ss.

I NEAL SPERHAKE, do hereby certify that on the FIRST day of NOVEMBER, 1962, I found evidence of the SOUTHEAST SECTION corner of SECTION 31 Township 34, North, Range 14 EAST; Fourth Principal Meridian, as described hereon; and that from this evidence I established a new monument and accessories as described hereon to perpetuate the original location of this corner.

Resident witnesses:

Richard Piontek - Waubeno

David Pichotta - Waubeno



○ = Corner monument restored.

History of original corner establishment:

This corner can also be described as: THE SECTION CORNER COMMON TO SECTIONS 5 AND 6, ~~T33N-R14E~~, AND, 31 AND 32, T34N-R14E, 4TH P.M.

This corner was established during the original survey of the town line between towns 33 and 34 North, as noted in the Original Field Notes for the Original Survey of T34N-R14E, 4th p.m.

Description of corner evidence found:

The original bearign three, described in the original field notes as:

"Hemlock 16 N43°W 38 links"

is still present at this date, with a portion of the original scribe marks still visible.

Description of monument and accessories I established to perpetuate the original location of this corner.

At the site of the original post, as determined from the existing original bearing tree noted above, I emplaced a "Galvanized iron pipe, three feet long, one inch in diameter, with an aluminum cap denoted as, 'KIMBERLY-CLARK CORP T33-34N 31, 32, 5, 6, R14E SPERHAKE RLS 463 11-1-62'".

The pipe is witnessed by:

Balsam 3 N34°W 32 links. (Scribed S31 NBT).

Balsam 5 N24°E 50 links. (Scribed S32 NBT).

Dated at Crandon, Wis., this 25th day of August, 1964

Signature Neal Sperhake Title Registered Land Surveyor Registration No. S-463  
(County Surveyor, Registered Land Surveyor, or other duly authorized official)

Office of Register of Deeds, County of Forest, I hereby certify that the within instrument was filed in this office for record on the 25 day of August, 1964 at 2:00 o'clock P. M.

Anna Peterson  
(Register of Deeds)

Subscribed & sworn to before me by  
Neal Sperhake this 25th day of Aug 1964.

Anna Peterson  
Notary Public, Forest Co., Wis.  
Com. expires Oct. 31, 1965

By \_\_\_\_\_ Deputy

FORM 985 - H. C. MILLER CO., MILWAUKEE

H3414310000  
Surveyor's Seal