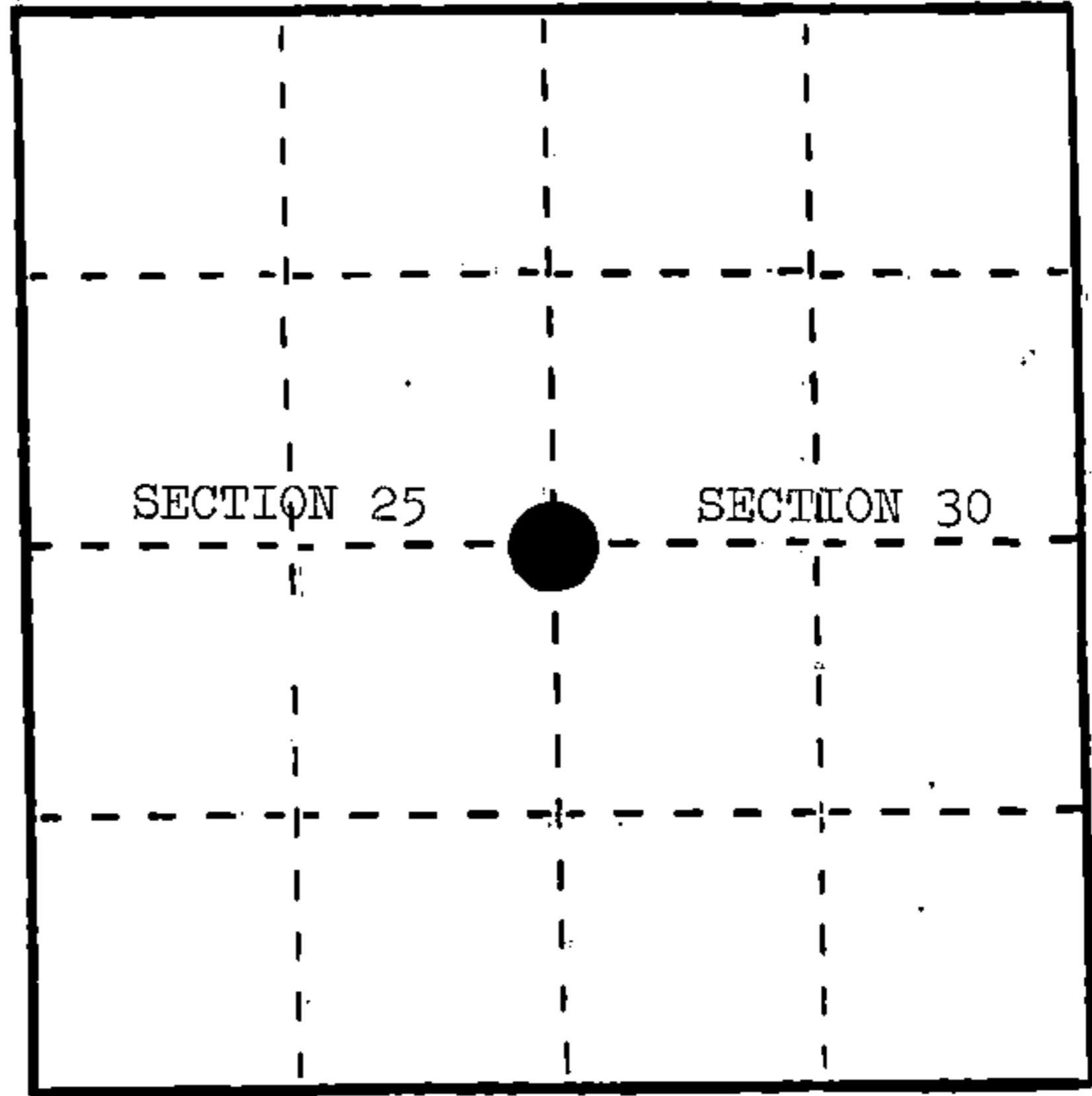


U. S. PUBLIC LAND SURVEY MONUMENT RECORD

INSTRUCTIONS: This record shall show the location of the corner and shall include all of the following nine elements (a through i).

- (a) Identify the corner by reference to the U.S. public land survey system.
- = Corner monument restored.

Quarter Corner to Sections 25 and 30, T.34N., R.14-15E.



REGISTER'S OFFICE  
Forest County, Wis.

Received for record this 17th day  
of January A.D., 1988 at

10:00 o'clock A.M. and recorded  
in Vol. CORNER RESTORATIONS  
page 5

*Paul Schenker*  
Register of Deeds

- (b) Describe any record evidence, monument evidence, occupational evidence, testimonial evidence or any other material evidence you considered, and whether the monument was found or placed.

In 1857, Alfred Millard set wood post with the following BTs: W. Birch, 9", S.88°E., 43 links; Elm, 20", N.85°W., 24 links.

October 30, 1907, J. J. Melendy found Elm post by W. L. Harris; original Elm, N.83°W., 15.62'; original Birch, S.85°E., 28.60'.

October 9, 1930, N. Smith found East 1/4 and mark on Elm. Set CE 1/16 on corrected line west.

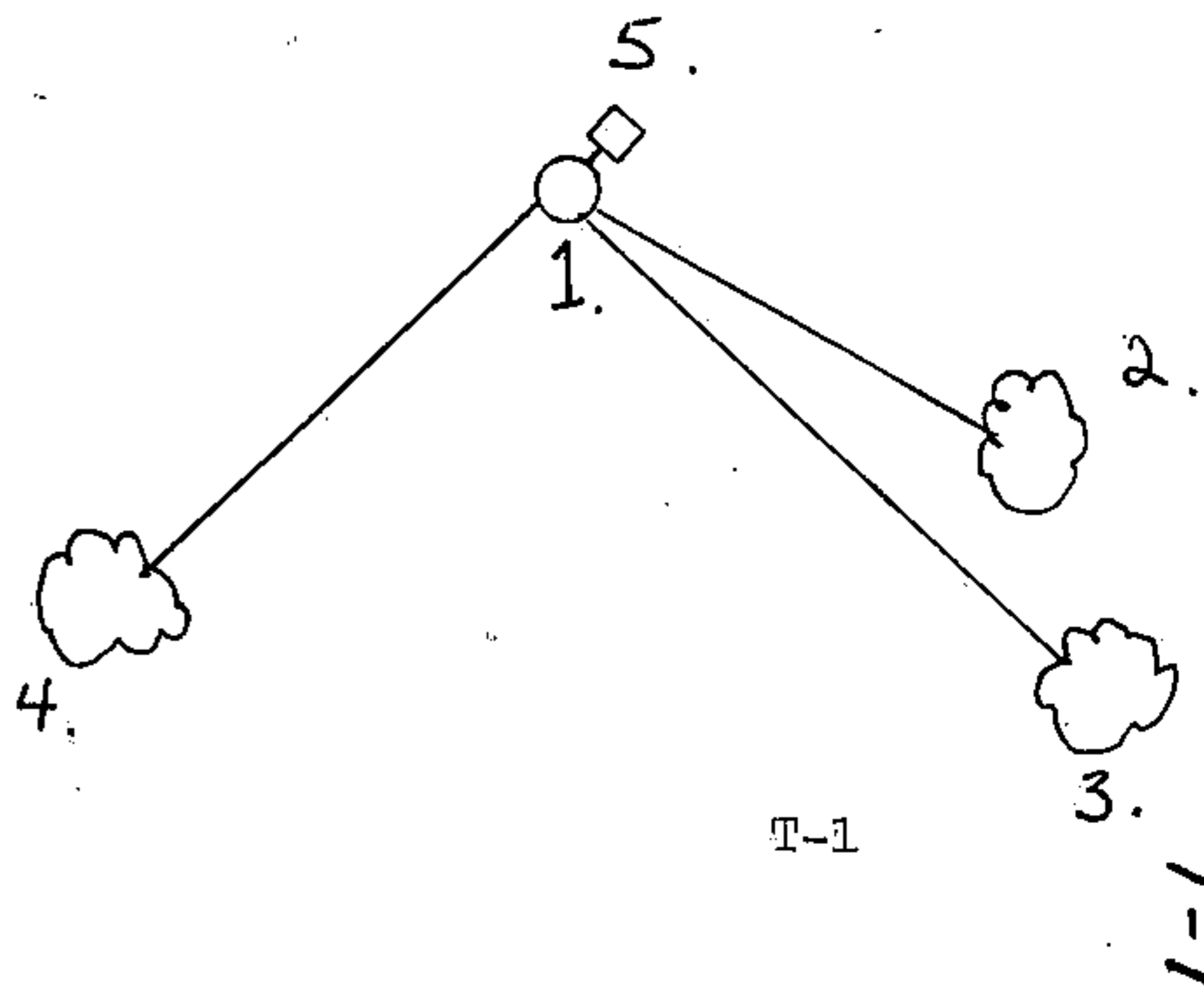
December 24, 1984, M. Stefan declared corner lost and restored it by single proportionate measure.

June 23, 1987, Alan Harrison restored this corner through retracement of N. Smith's 1922 survey from W 1/4 through Smith's CE 1/16 in Section 25, T.34N., R.14E.

- (c) In the plan view drawing below, provide reference ties to at least 4 witness monuments, or, if the location is within a municipality, to at least 2 witness monuments. (Witness monuments shall be made of concrete, natural stone, iron or other equally durable material.) Describe witness monuments.

- (d) Show a plan view drawing depicting the relevant monuments and reference ties which is sufficient in detail to enable accurate relocation of the corner monument if the corner monument is disturbed. Indicate north.

1. A 2" x 30" aluminum monument stamped to identify the corner.
2. Sugar, 15", S.58°E., 46.96 feet.
3. Black Cherry, 8", S.46°E., 60.22 feet.
4. Aspen, 9", S.41°W., 23.64 feet.
5. Steel Sign Post, Northeast, 1.00 feet.



(e) Describe any material discrepancy between the location of the corner as restored or reestablished and the location of that corner as previously restored or reestablished by distance and direction. Show the discrepancy on the plan view drawing under (d), above. Show the distances between the corner as previously restored or reestablished and (1) the corner as restored or reestablished, and (2) to at least 2 of the witness monuments shown on the drawing in (d), above.

M. Stefan's proportionate position bears  $S40^{\circ}21.7'E.$ , 45.62 feet.

(f) Was the corner restored through acceptance of (1) an obliterated evidence location, or, (2) a found perpetuated location?

(1) an obliterated evidence location.

(g&h) Was the corner reestablished through lost corner proportionate methods? If so, show the method, including the directions and distances to other public land survey corners used as evidence or used for proportioning in determining the corner location?

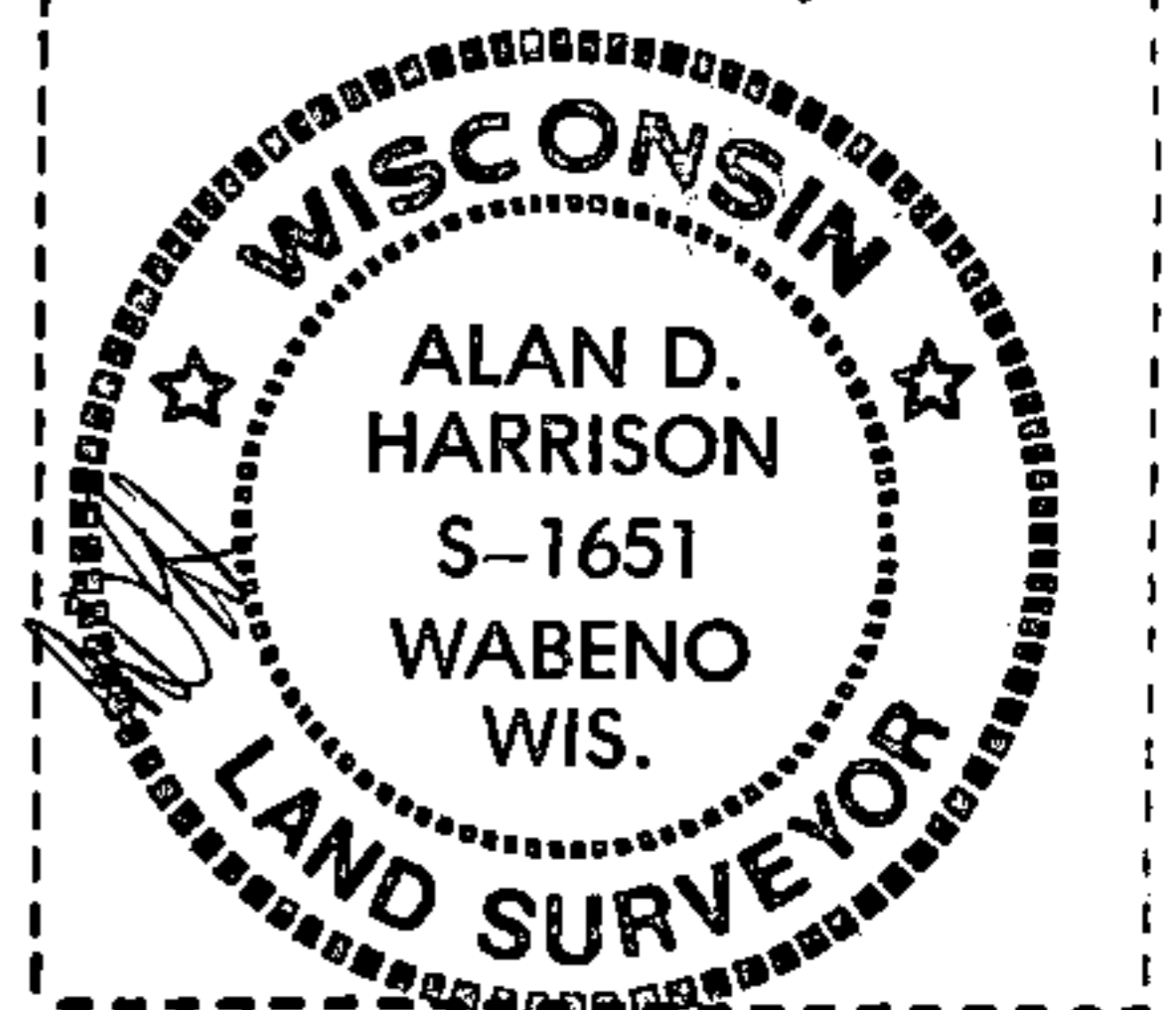
No.

(1) I, Alan D. Harrison  
(Type or print name) certify that the corner location shown on this record was determined by me or under my direction and control and that this U.S. Public Land Survey Monument Record is correct and complete to the best of my knowledge and belief.

Alan D. Harrison  
Signature

2/16/88  
Date

Affix Land Surveyor Seal



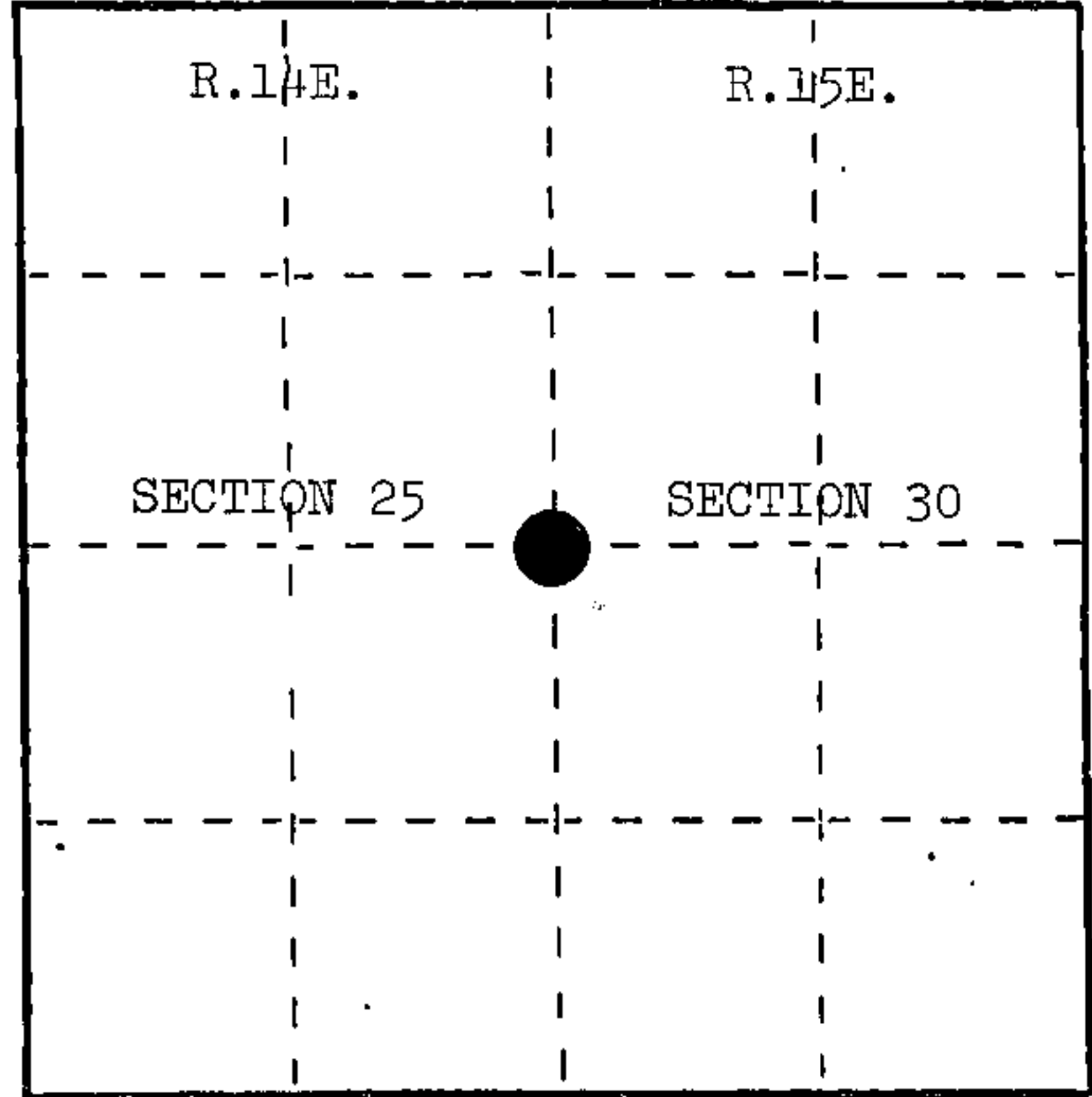
**U. S. PUBLIC LAND SURVEY MONUMENT RECORD**

**I N S T R U C T I O N S :** This record shall show the location of the corner and shall include all of the following nine elements (a through i).

(a) Identify the corner by reference to the U.S. public land survey system.

○ = Corner monument restored.

Quarter corner to Sections 25 and 30, T.34N., R.14-15E., Forest County, Wisconsin.



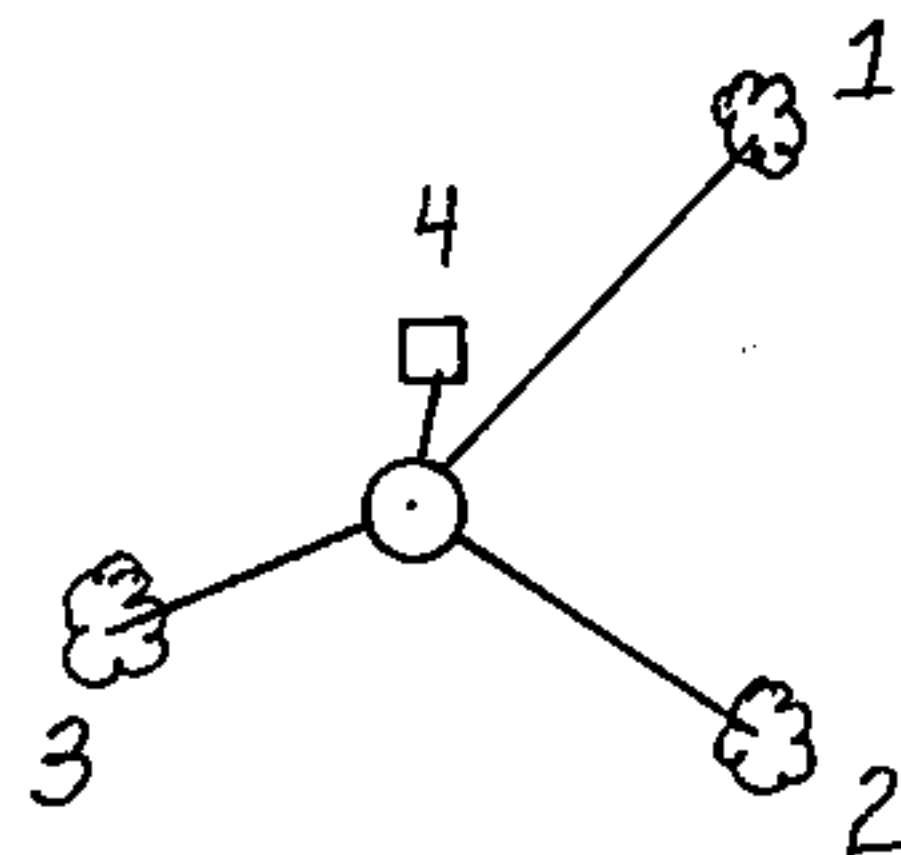
(b) Describe any record evidence, monument evidence, occupational evidence, testimonial evidence or any other material evidence you considered, and whether the monument was found or placed.

No original evidence found. Corner position restored from single proportionate measure and monumented with a 2" x 30" aluminum monument.

(c) In the plan view drawing below, provide reference ties to at least 4 witness monuments, or, if the location is within a municipality, to at least 2 witness monuments. (Witness monuments shall be made of concrete, natural stone, iron or other equally durable material.) Describe witness monuments.

(d) Show a plan view drawing depicting the relevant monuments and reference ties which is sufficient in detail to enable accurate relocation of the corner monument if the corner monument is disturbed. Indicate north.

1. Sugar Maple, 14", N.42°E., 17.73 feet
2. Black Cherry, 8", S.58°E., 15.05 feet
3. Sugar Maple, 25", S.71°W., 11.33 feet
4. Steel Sign Post, Northeast, 0.80 feet



REGISTER'S OFFICE }  
 Forest County, Wis. }  
 Received for record this... 16th day  
 of January.....A. D., 1995 at  
 .....9:30 o'clock.....A.....M. and  
 recorded in Vol. CORNER RESTORATIONS  
 on page.....  
Paul Aschenbrenner  
 REGISTER

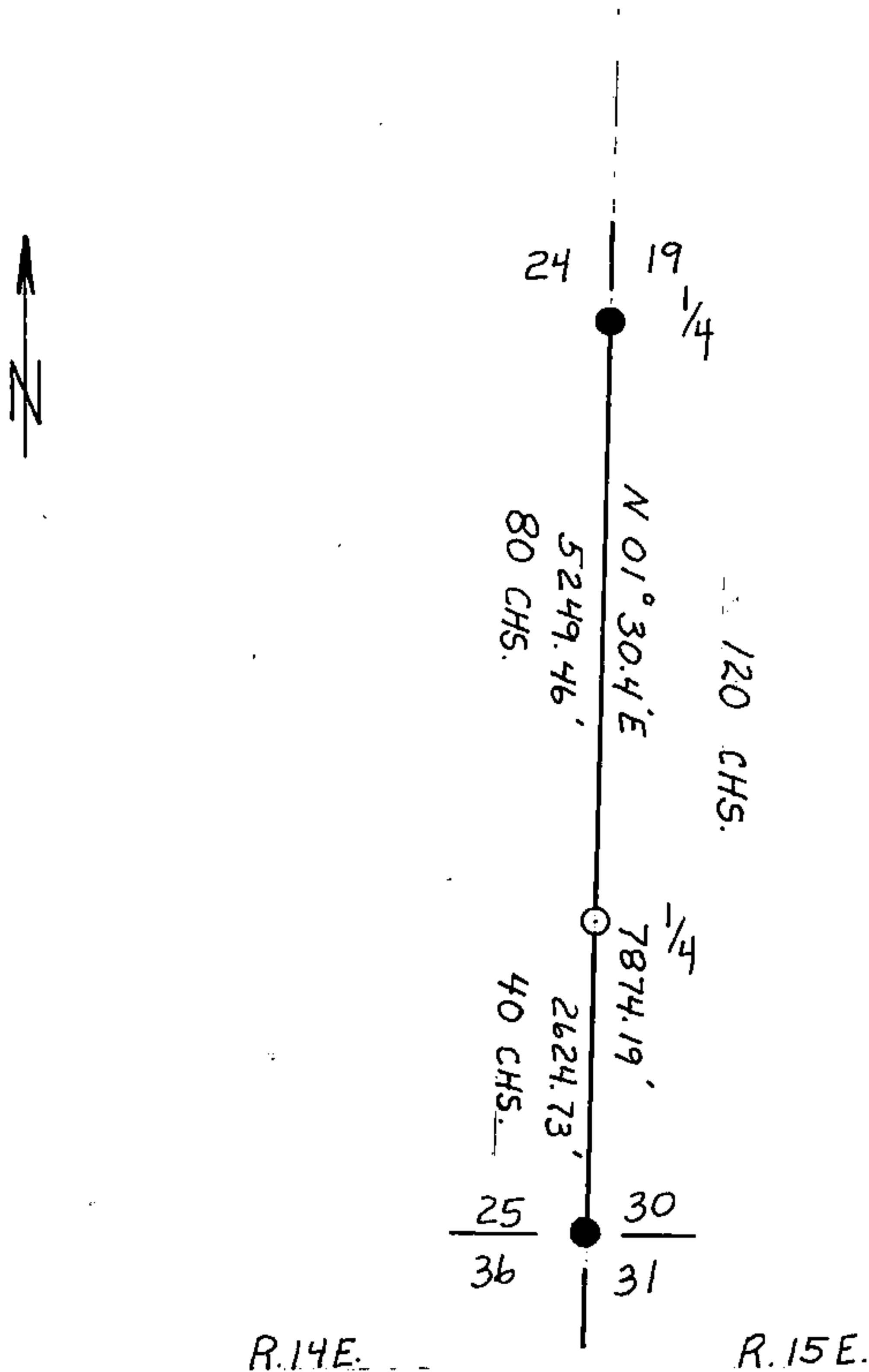
(e) Describe any material discrepancy between the location of the corner as restored or reestablished and the location of that corner as previously restored or reestablished by distance and direction. Show the discrepancy on the plan view drawing under (d), above. Show the distances between the corner as previously restored or reestablished and (1) the corner as restored or reestablished, and (2) to at least 2 of the witness monuments shown on the drawing in (d), above.

None.

(f) Was the corner restored through acceptance of (1) an obliterated evidence location, or, (2) a found perpetuated location?

Single proportionate measure.

(g&h) Was the corner reestablished through lost corner proportionate methods? If so, show the method, including the directions and distances to other public land survey corners used as evidence or used for proportioning in determining the corner location?



(1) I, Milo E. Stefan  
 (type or print name) certify that the corner location shown on this record was determined by me or under my direction and control and that this U.S. Public Land Survey Monument Record is correct and complete to the best of my knowledge and belief.

Milo E. Stefan  
 Signature

12/24/84  
 Date