

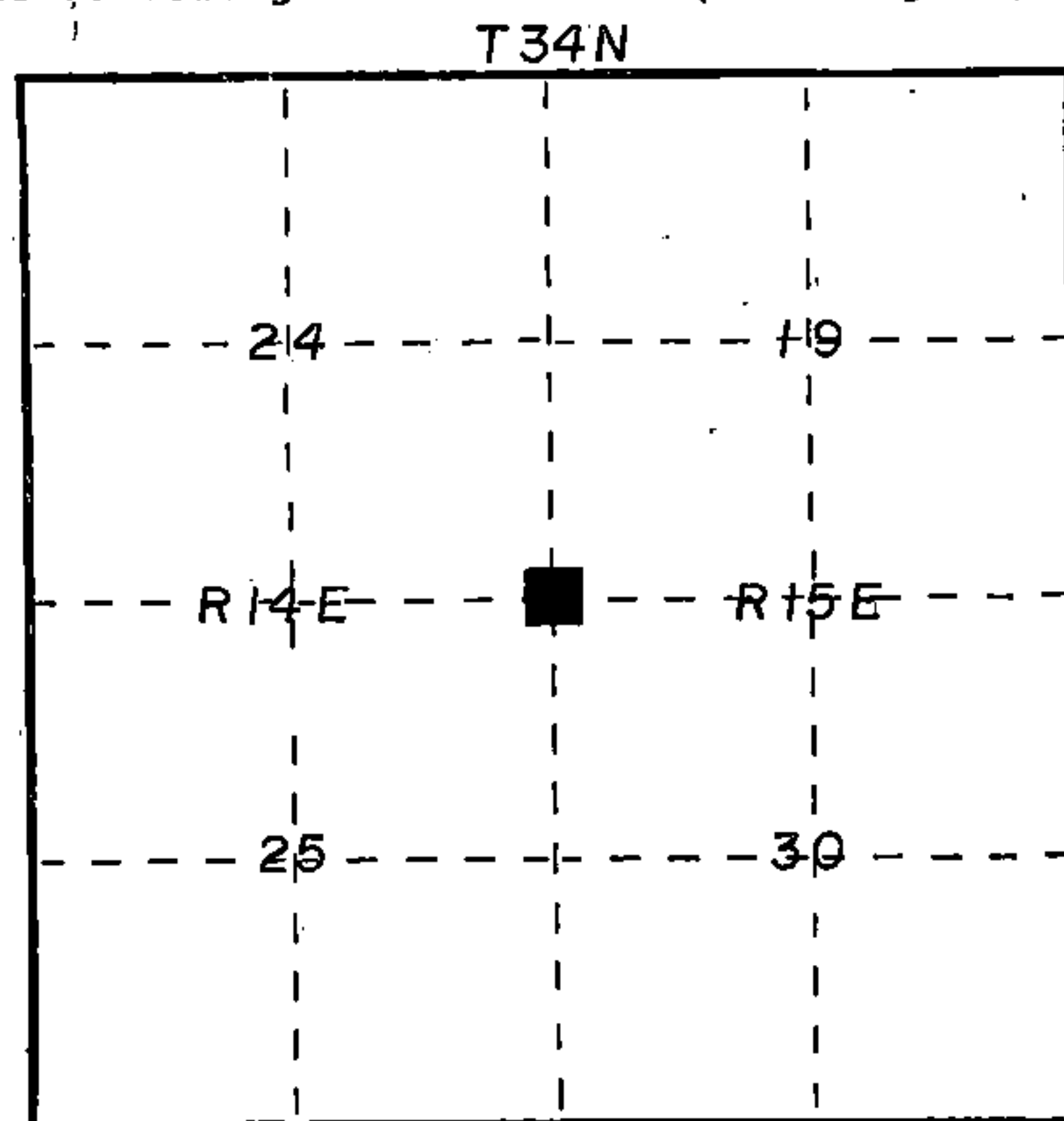
## U. S. PUBLIC LAND SURVEY MONUMENT RECORD

INSTRUCTIONS: This record shall show the location of the corner and shall include all of the following nine elements (a through i).

- (a) Identify the corner by reference to the U.S. public land survey system.

■ = Corner monument restored.

Section corner to Section 19 & 30, Township 34 North, Range 15 East and to Sections 24 and 25, Township 34 North, Range 14 East. Corner was established in July 1857 by Artemas Curtis with bearing trees marked: Hemlock 12" N 33°E 24 links, Sugar 9" S 26°E 27 links; Yellow Birch 28" N 47° W 23 links; Hemlock 12" S 68°W 46 links.



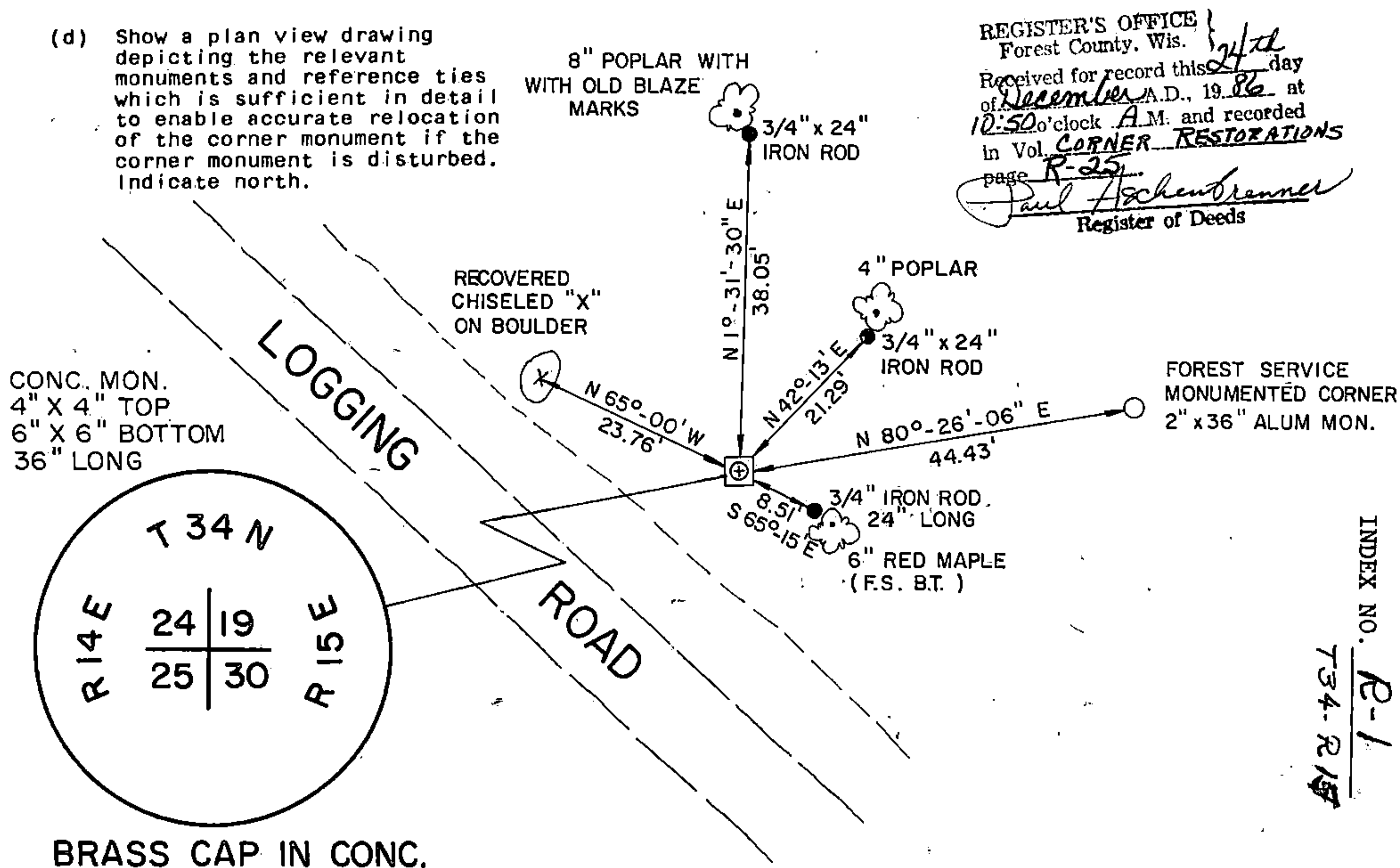
- (b) Describe any record evidence, monument evidence, occupational evidence, testimonial evidence or any other material evidence you considered, and whether the monument was found or placed.

On May 21, 1982 Milo E. Stefan stated that he located the remains of the Northeast, Southwest and Northwest B.T.'s and the Southeast position was a stump hole. He also stated that there was possible post point remains.

On January 19, 1909 J.A. Melindy, surveyor identified the original corner position in agreement with all of the stumps of the original bearing trees. He witnessed this corner with a chiseled X on a 4' x 3.2' granite boulder. On February 13, 1909 J.A. Melindy certified that he surveyed Section 19, T 34 N, R 15 E according to law. There are no visible bearing trees or stumps from bearing trees today. There are numerous ground depressions in this area. The apparent depressions used by Stefan do not agree with the original bearings and distances by several feet.

- (c) In the plan view drawing below, provide reference ties to at least 4 witness monuments, or, if the location is within a municipality, to at least 2 witness monuments. (Witness monuments shall be made of concrete, natural stone, iron or other equally durable material.) Describe witness monuments.

- (d) Show a plan view drawing depicting the relevant monuments and reference ties which is sufficient in detail to enable accurate relocation of the corner monument if the corner monument is disturbed. Indicate north.



43414240000

- (e) Describe any material discrepancy between the location of the corner as restored or reestablished and the location of that corner as previously restored or reestablished by distance and direction. Show the discrepancy on the plan view drawing under (d), above. Show the distances between the corner as previously restored or reestablished and (1) the corner as restored or reestablished, and (2) to at least 2 of the witness monuments shown on the drawing in (d), above.

Stefen's position is N 80°-26'-26" E 44.43 feet from the corner recovered by Melendy in 1909.

- (f) Was the corner restored through acceptance of (1) an obliterated evidence location, or, (2) a found perpetuated location?

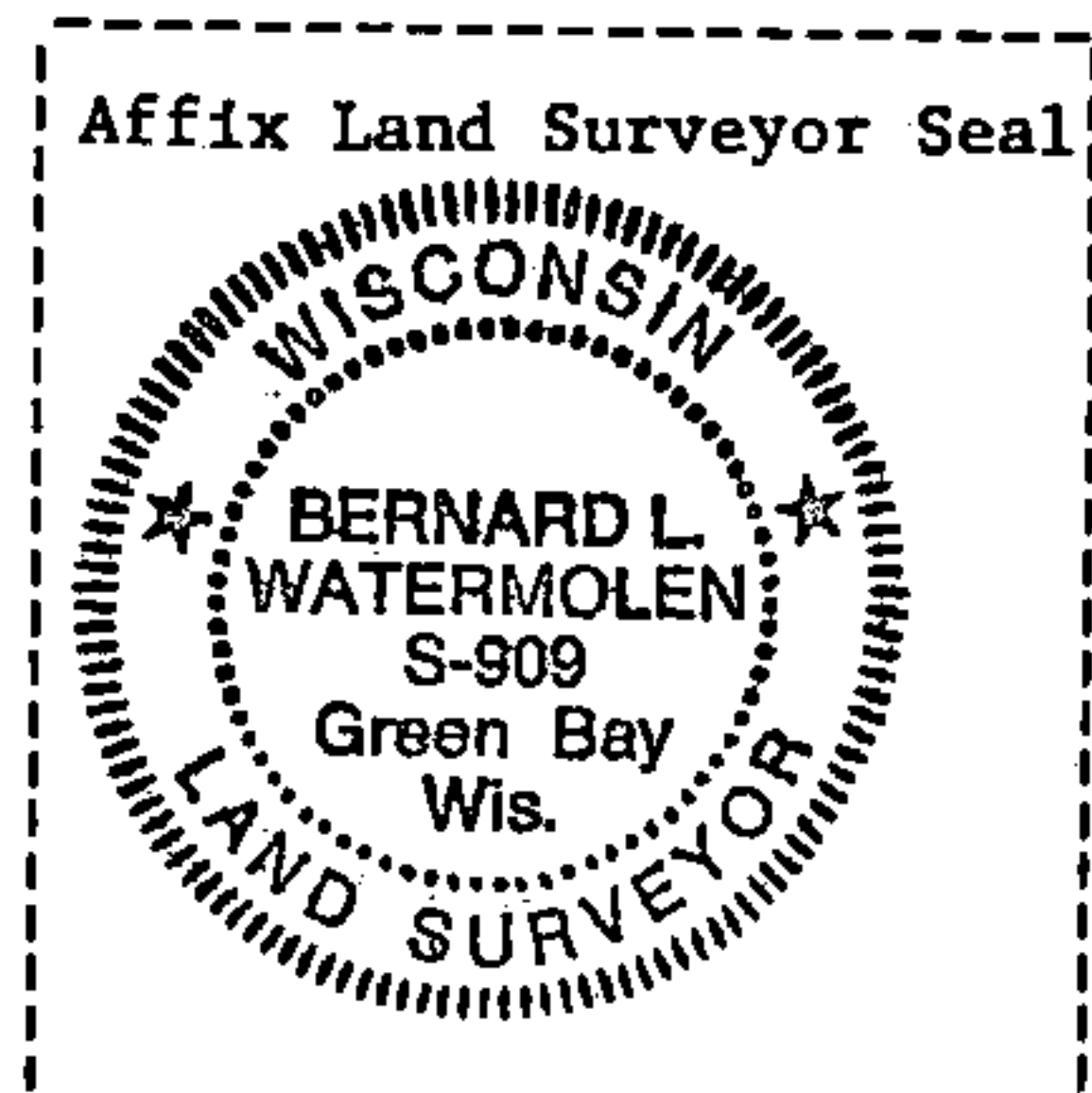
Distance to South One-Quarter corner is 2,789.73. Melendy's measurement to South One-Quarter corner was 2,798.40. Original Government measurement was 2,791.80.

- (g&h) Was the corner reestablished through lost corner proportionate methods? If so, show the method, including the directions and distances to other public land survey corners used as evidence or used for proportioning in determining the corner location?

- (i) I, Bernard L. Watermolen  
(type or print name) certify that the corner location shown on this record was determined by me or under my direction and control and that this U.S. Public Land Survey Monument Record is correct and complete to the best of my knowledge and belief.

Bernard L. Watermolen  
Signature

12-22-86  
Date



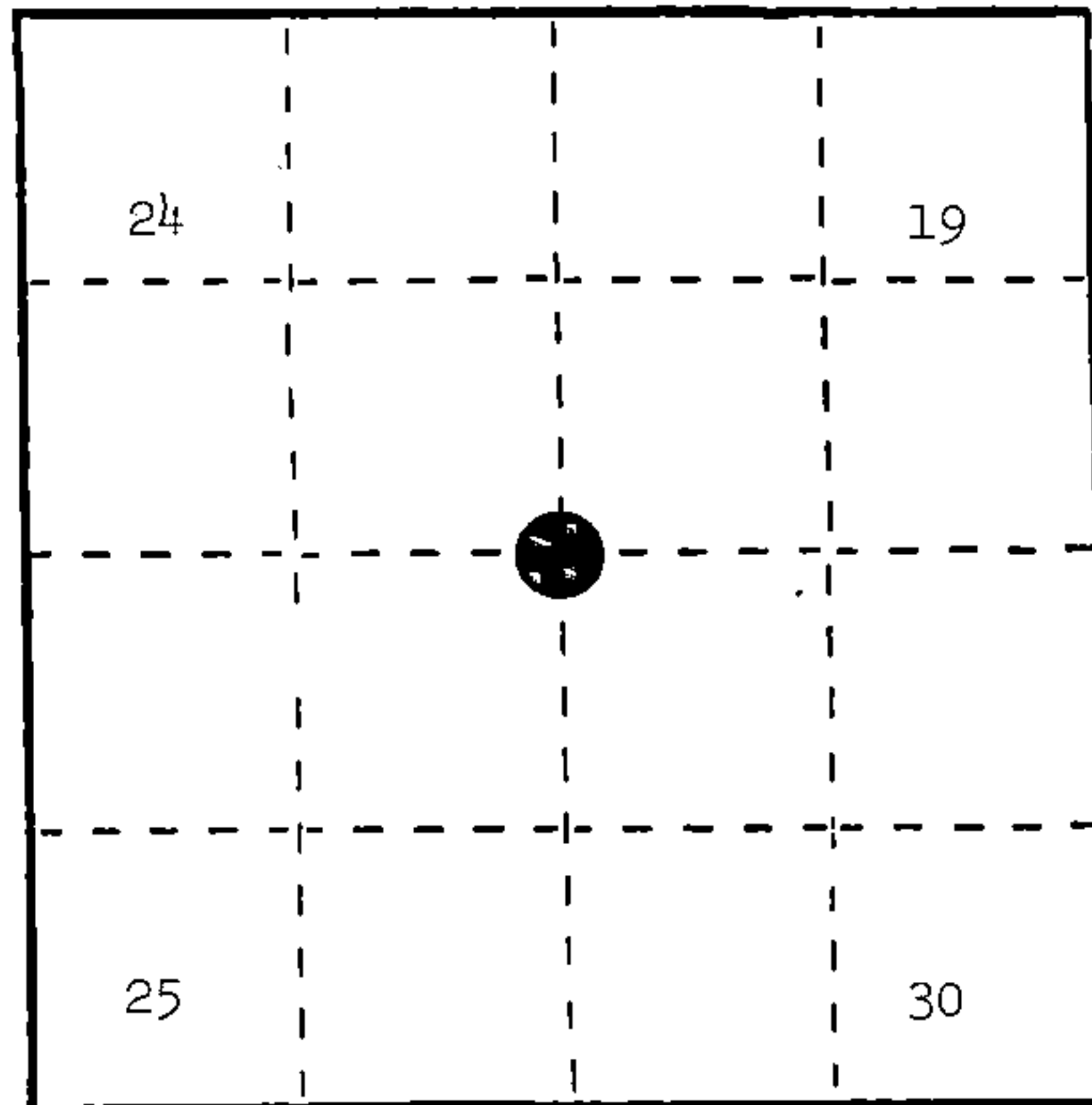
DOCUMENT NUMBER 129825

# U. S. PUBLIC LAND SURVEY MONUMENT RECORD

**INSTRUCTIONS:** This record shall show the location of the corner and shall include all of the following nine elements (a through i).

- (a) Identify the corner by reference to the U.S. public land survey system.  
 O = Corner monument restored.

Section corner to Sections 19, 24, 25, and 30,  
 T.34N., R.14-15E.



REGISTER'S OFFICE }  
 Forest County, Wis. }  
 Received for record this 14th day  
 of March A.D., 1986 at  
10:20 o'clock A.M. and recorded  
 in Vol. CORNER RESTORATIONS  
 page R-1  
Paul Aschenbrenner  
 Register of Deeds

- (b) Describe any record evidence, monument evidence, occupational evidence, testimonial evidence or any other material evidence you considered, and whether the monument was found or placed.

July, 1857, Artemas Curtis set post at 80.00 chains with the following BTs: Hemlock, 12", N.33°E., 24 links; Sugar, 9", S.26°E., 27 links; Yellow Birch, 28", N.47°W., 23 links; Hemlock, 12", S.68°W., 46 links.

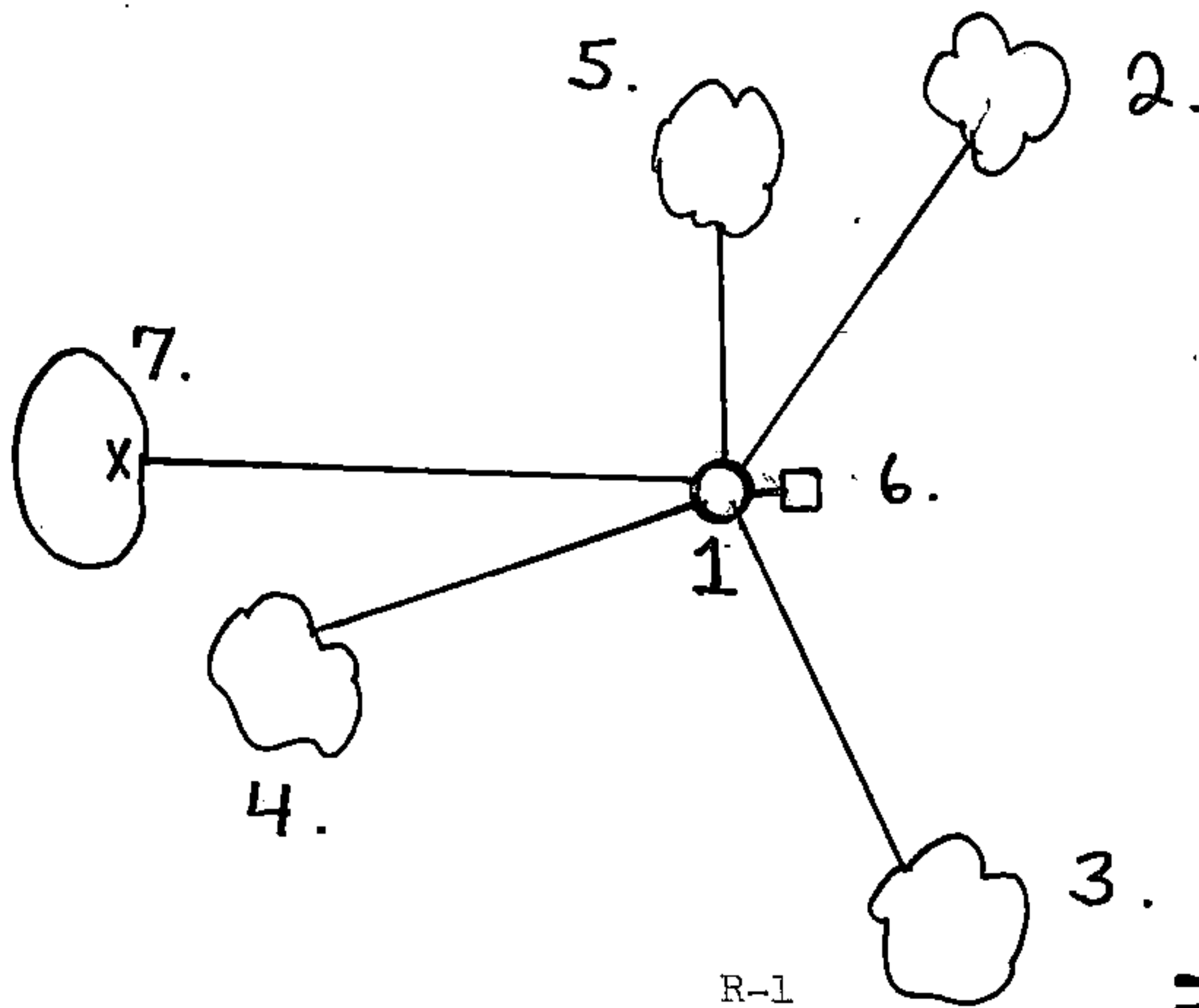
January 19, 1909, J. J. Melindy set 5" x 5" x 40" Cedar post with stones around. He stated, "Stumps of original trees all agree." "X" on stone, N.65°W., 36 links.

May 21, 1982, Milo E. Stefan located remains of the northeast, southwest, and northwest original BTs. The southeast position was a stump hole. Corner position fell along east side of a boulder. Excavation of position revealed woody remains of a possible post point 8" - 10" below ground surface.

- (c) In the plan view drawing below, provide reference ties to at least 4 witness monuments, or, if the location is within a municipality, to at least 2 witness monuments. (Witness monuments shall be made of concrete, natural stone, iron or other equally durable material.)  
 Describe witness monuments.

- (d) Show a plan view drawing depicting the relevant monuments and reference ties which is sufficient in detail to enable accurate relocation of the corner monument if the corner monument is disturbed. Indicate north.

1. 2" x 36" aluminum monument
2. Sugar Maple, 8", N.37°E., 33.68 feet
3. Sugar Maple, 5", S.23°E., 40.26 feet
4. Red Maple, 6", S.65°W., 37.68 feet
5. Sugar Maple, 4", N.2°W., 19.78 feet
6. Steel Sign Post, East, 0.7 feet
7. "X" on 3' x 5' x 4' boulder, N.87°40'13"W., 65.40 feet



- (e) Describe any material discrepancy between the location of the corner as restored or reestablished and the location of that corner as previously restored or reestablished by distance and direction. Show the discrepancy on the plan view drawing under (d), above. Show the distances between the corner as previously restored or reestablished and (1) the corner as restored or reestablished, and (2) to at least 2 of the witness monuments shown on the drawing in (d), above.

Melindy's position from the only reference he gave ("X" on boulder, N.65°W., 36 links) is S.80°26'05"W., 44.43 feet from the monumented restored position off the remains of the original bearing trees.

- (f) Was the corner restored through acceptance of (1) an obliterated evidence location, or, (2) a found perpetuated location?

(1) an obliterated evidence location.

- (g&h) Was the corner reestablished through lost corner proportionate methods? If so, show the method, including the directions and distances to other public land survey corners used as evidence or used for proportioning in determining the corner location?

Affix Land Surveyor Seal



- (i) I, Milo E. Stefan  
(type or print name) certify that the corner location shown on this record was determined by me or under my direction and control and that this U.S. Public Land Survey Monument Record is correct and complete to the best of my knowledge and belief.

Milo E. Stefan  
Signature

2/19/86  
Date