

U.S. PUBLIC LAND SURVEY MONUMENT RECORD

(As Required By WI Adm. Code)

History of original corner establishment and subsequent restorations and description of any record, monument, occupational, testimonial or other evidence considered:

1859 - J. McBride, contract surveyor, set original wooden corner post with these bearing trees: ELM 12" N35°W 32 LINKS HEMLOCK 10" N72°E 25 LINKS

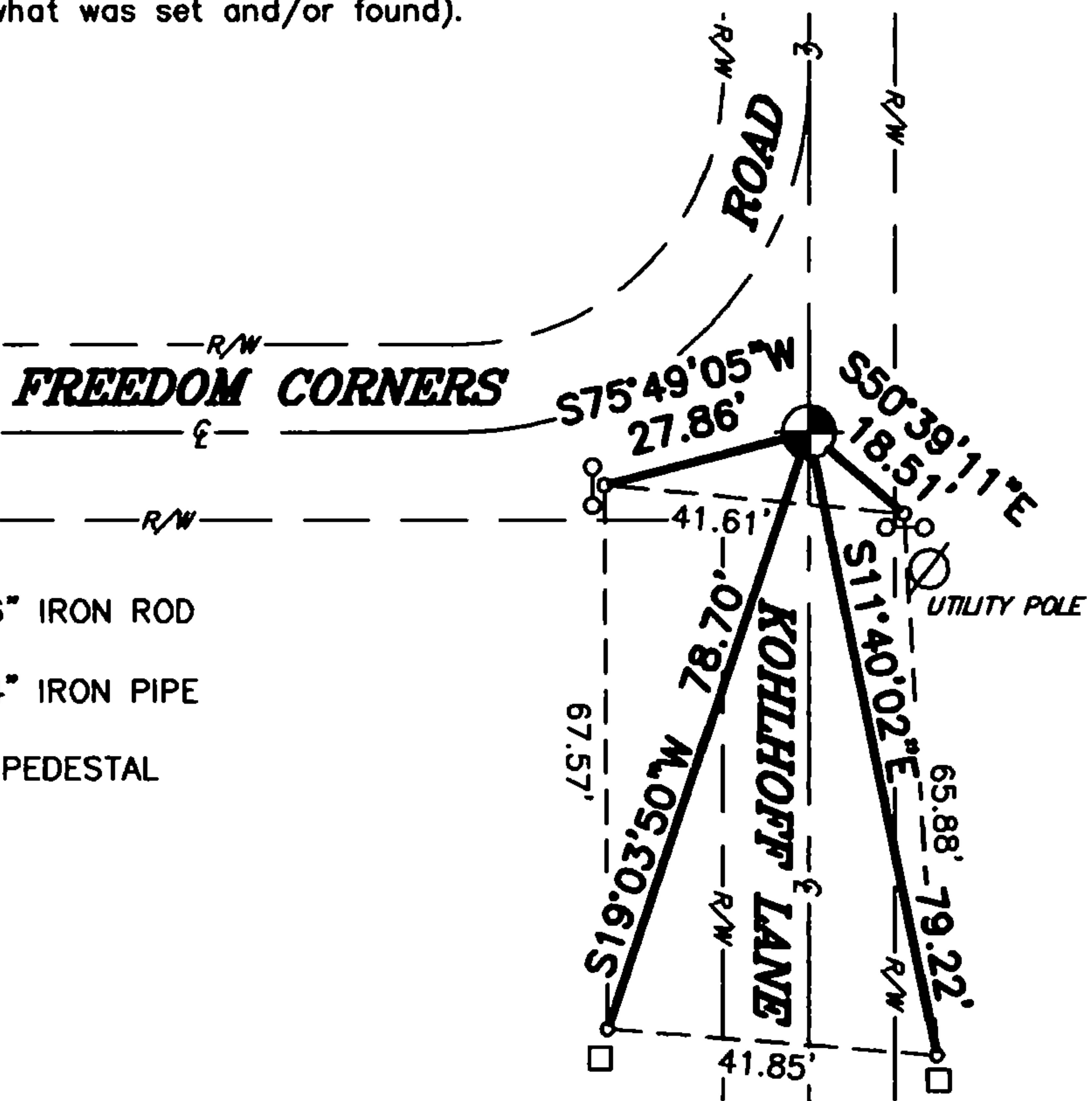
2010 - Casey J. Swanson, RLS, Traversed around Sections 21 and 22 locating the centerline at the Center of Section 21 and locating a fence corner at the Center of Section 22. I also located a fence at the north sixteenth corner that was not used in the monumentation due to the other evidence located in the traverse. The fence corner in Section 22 fit well with the North-South quarter line of said Section and with a line between the East quarter corner and the intersection of centerlines at the West quarter corner location of said Section. The centerline at the Center of Section 21 fit well with a line between the West quarter corner of said Section 21 and the intersection of centerlines at the East quarter corner of said Section 21. The intersection of centerlines was excavated and monumented as best available evidence with ties as follows:

Corner was: (Check All That Apply)

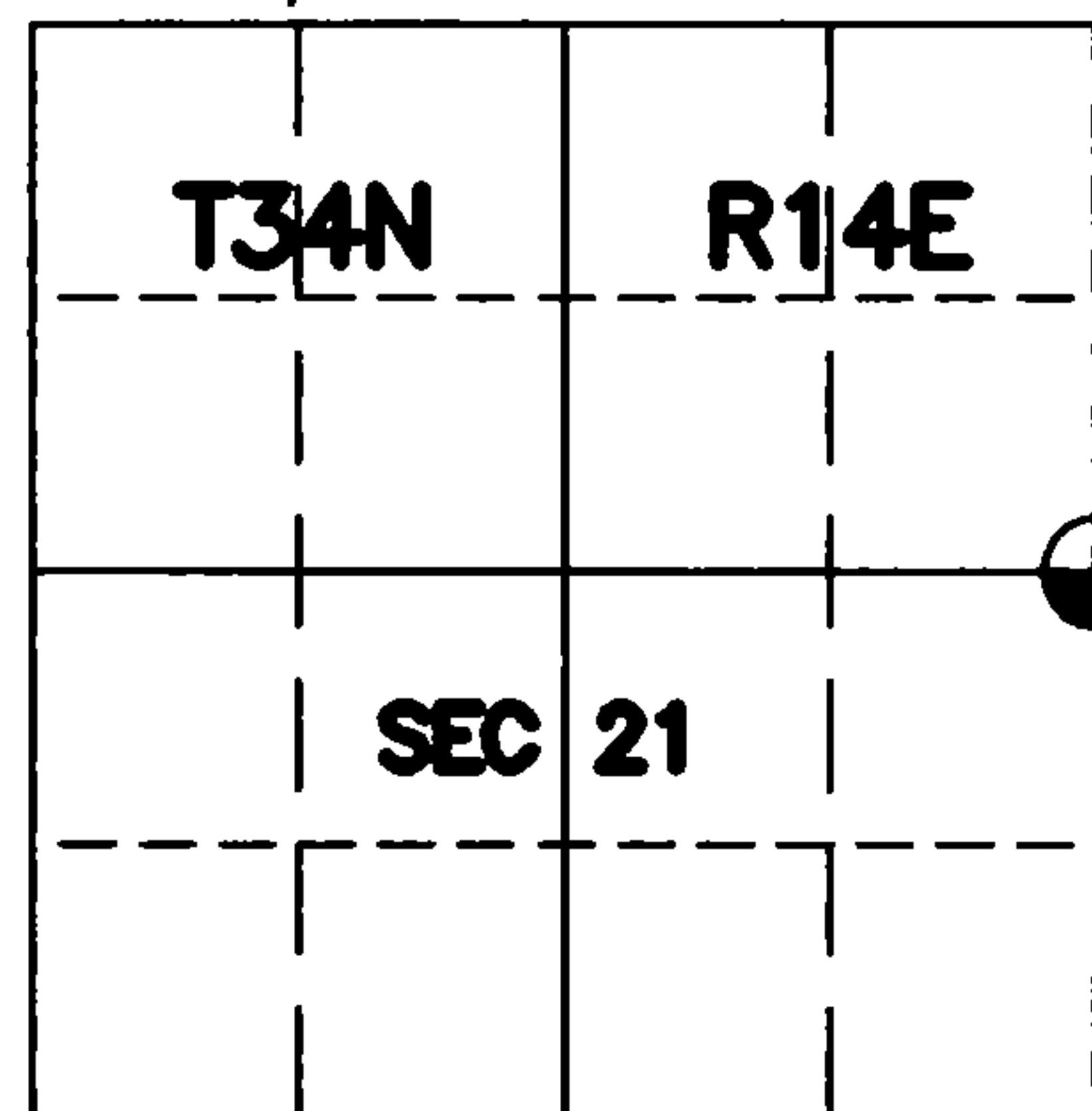
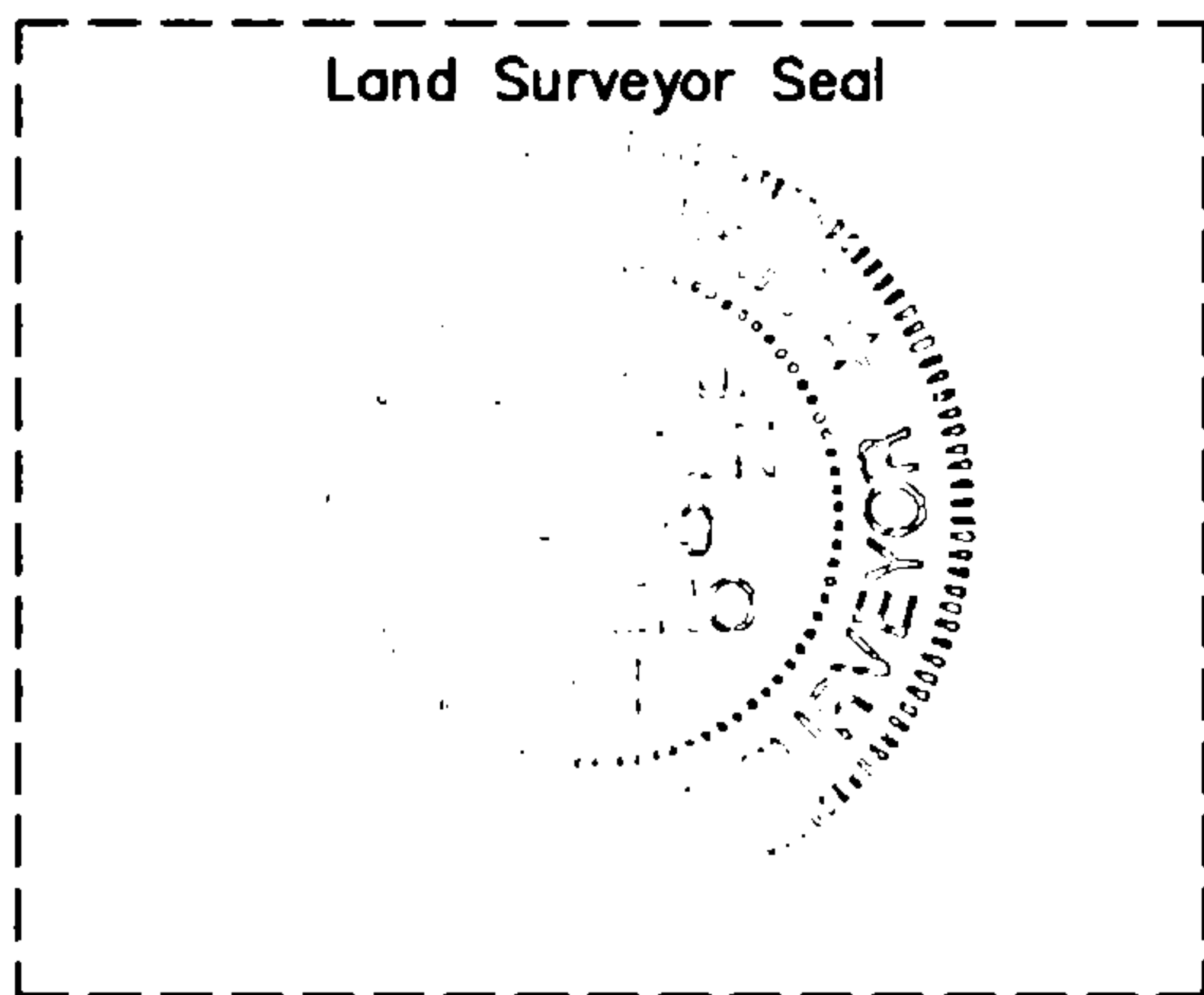
- X Restored through acceptance of an obliterated evidence location.
- Restored through acceptance of a found perpetuated location.
- Considered a lost corner and reestablished through lost corner proportionate methods (include a plan view drawing showing distances and directions to other Public Land Survey Corners used for proportioning and determining the corner location).
- Restored or reestablished in a location that differs from a previous restoration or reestablishment (include a plan view drawing and indicate what was set and/or found).

Describe the monument and accessories used to perpetuate the location of this corner (include a plan view drawing and indicate what was set and/or found).

REGISTER'S OFFICE
Forest County, Wis.
Received for record this 11th day of June A.D., 2010 at 9:00 o'clock A.M. and recorded in Vol. Corner Restoration page P-13
Kay Swanson, Deputy Register of Deeds



- SET 1" X 36" IRON ROD
SET 1" x 24" IRON PIPE
TELEPHONE PEDESTAL
ROAD SIGN



I, Casey J. Swanson (type or print name) certify that the corner location shown on this record was determined by me or under my direction and control and that this U. S. Public Land Survey Monument Record is correct and complete to the best of my knowledge and belief.
Signature: [Signature] Date: 6-10-10

The EAST QUARTER corner of Section 21 T. 34 N., R. 14 E. Forest County, WI

Index No. P-13