

NOV 08 2023

CORTNEY BRITTEN CLEEREMAN
REGISTER OF DEEDS

241611

U S PUBLIC LAND SURVEY MONUMENT RECORD - ADDENDUM

NOTE: This form is intended and designed to fulfill all requirements of Wisconsin Administrative Code, Chapter A-E 7.08 U.S. Public Land Survey Monument Record (3) (a-i)

A-E 7.08(3)(a) Identity of corner:
EAST 1/4 CORNER SECTION 18,
TOWNSHIP 34 NORTH,
RANGE 14 EAST OF THE 4TH PM,
TOWN OF FREEDOM,
COUNTY OF FOREST

WISCORS - FOREST COUNTY
N: 519,084.015 USft (XXX,XXX.XXX)
E: 867,447.290 USft (XXX,XXX.XXX)
Datum: NAD83 (2011)
GNSS Method RTK
GNSS Control WISCORS VRS



The coordinate value shown has been verified by the average of two or more GPS observations at a markedly different time. Coordinates shown in parenthesis are previously published values.

A-E 7.08(3)(b)

Original Surveyor: James McBride

Date of Original Survey Commenced: August 10, 1859
Completed: August 20, 1859

Original Accessories:
Hemlock 10 N 37° W 29 Links
Hemlock 10 S 87° E 11 Links

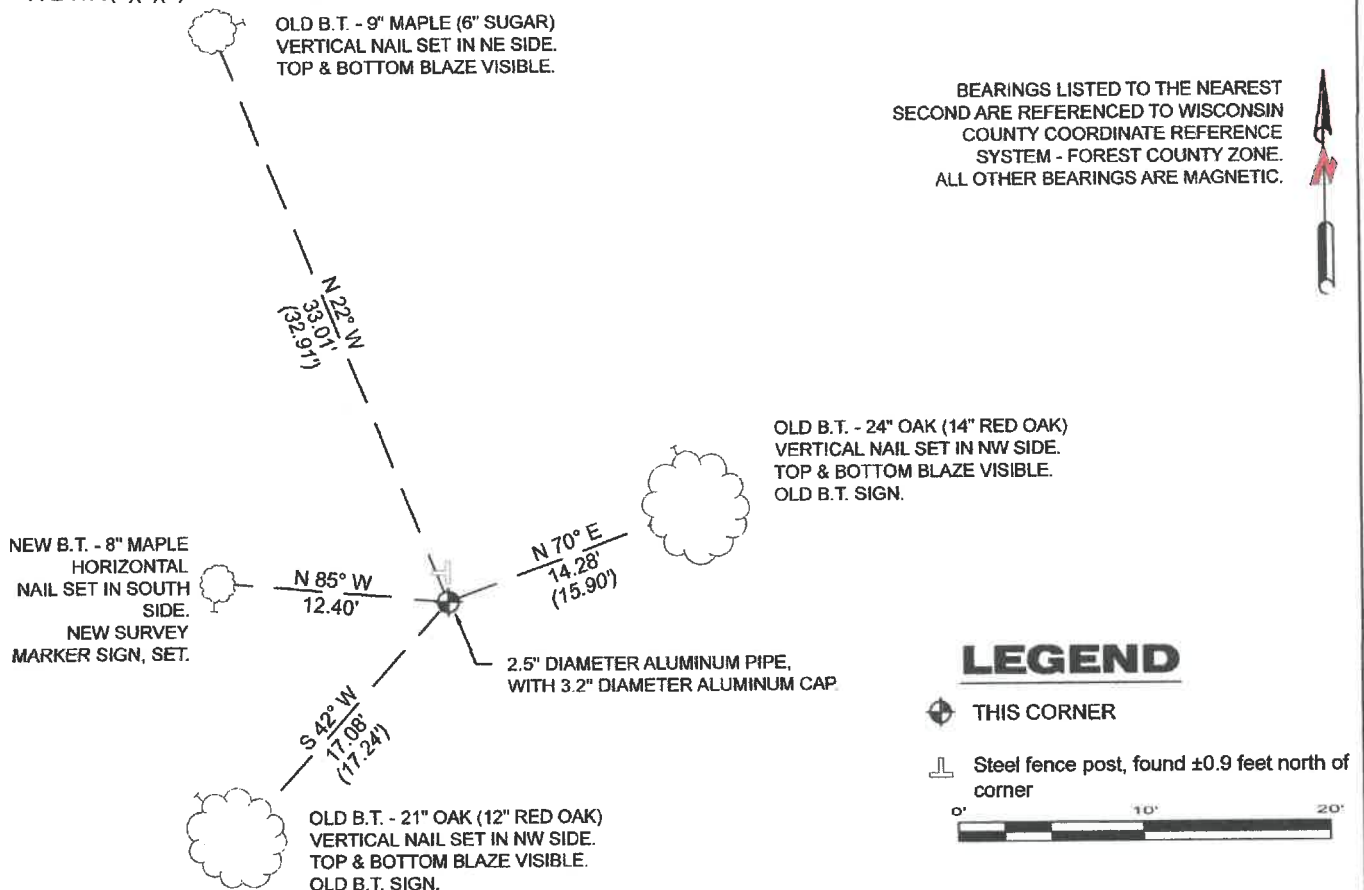
See previous - U.S. PUBLIC LAND SURVEY MONUMENT RECORD - L-5 - 1985 - Surveyor 1651 - Alan D. Harrison - THENCE:

December 12, 2005 - Surveyor 2197 - Michael A. Trembl - indicates this position as "existing 2" aluminum pipe mon." on Certified Survey Map #193041.

July 15, 2008 - Surveyor 2197 - Michael A. Trembl - indicates this position as "existing 2" aluminum pipe mon." on Certified Survey Map #198179.

May 10, 2023 - I found a 2.5" diameter aluminum pipe with a 3.2" diameter aluminum cap stamped to identify the corner. I also found 3 of Harrison's bearing trees and his steel sign post. I established 1 new reference monuments as shown below.

A-E 7.08(3)(c)(d) Plan view of corner with references to at least 4 witness monuments.



A-E 7.08(3)(e) 1859 Surveyor set a post, 1985 Surveyor set a 2 1/2" aluminum monument, 2005 & 2008 Surveyor found a 2" aluminum pipe monument. I found a 2.5" diameter aluminum pipe with a 3.2" diameter aluminum cap.

A-E 7.08(3)(f) I accept this monument as a FOUND PERPETUATED LOCATION of the corner.

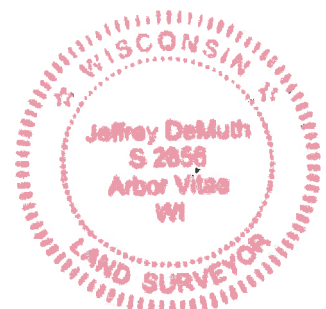
A-E 7.08(3)(g)(h) This corner was not determined through lost-corner-proportionate methods.

A-E 7.08(3)(i) I, Jeffrey L. DeMuth, Professional Land Surveyor No. S-2656, hereby certify that the corner location on this record was determined by me or under my direction and control, and that this U.S. Public Land Survey Monument Record is correct and complete to the best of my knowledge, and belief.

SIGNATURE

May 11, 2023

DATE



43414182000

L5

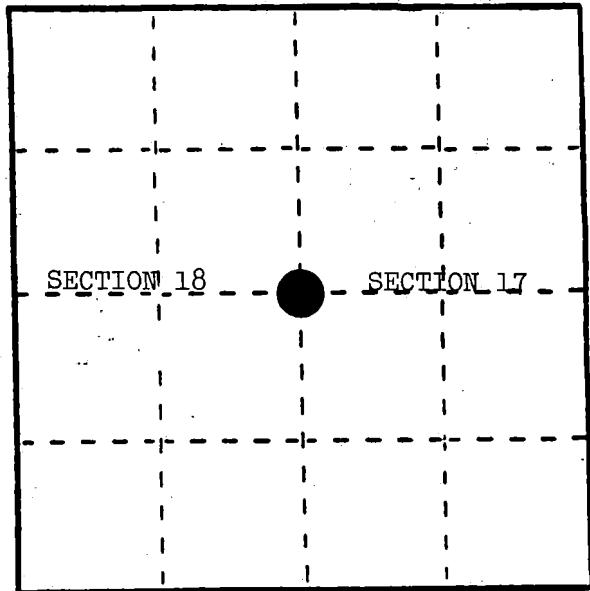
R.O.P.

U. S. PUBLIC LAND SURVEY MONUMENT RECORD

INSTRUCTIONS: This record shall show the location of the corner and shall include all of the following nine elements (a through i).

- (a) Identify the corner by reference to the U.S. public land survey system.
○ = Corner monument restored.

Quarter corner to Sections 17 and 18, T.34N., R.14E., Forest County, Wisconsin.



REGISTER'S OFFICE
Forest County, Wis.

Received for record this 3rd day
of December, A.D., 1986 at
1:30 o'clock P.M. and recorded
in Vol. CORNER RESTORATIONS

page 1-5
Paul Aschenbrenner
Register of Deeds

- (b) Describe any record evidence, monument evidence, occupational evidence, testimonial evidence or any other material evidence you considered, and whether the monument was found or placed.

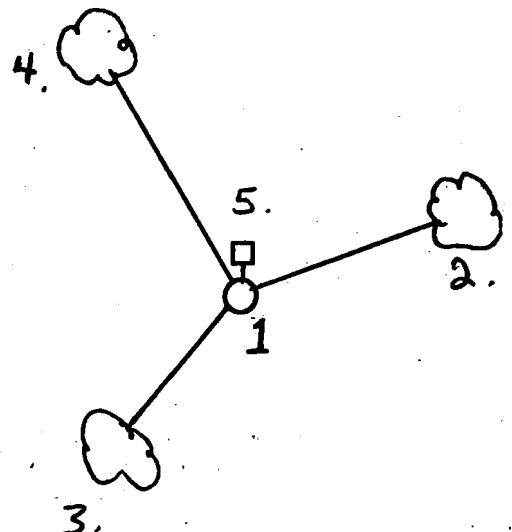
In 1859, James McBride set wood post at 40.00 chains and made the following BTs: Hemlock, 10", N.37°W., 29 links; Hemlock, 10", S.87°E., 11 links.

In 1985, Alan Harrison found 1" iron pipe on south side of marsh. Call from iron pipe to marsh fits original within 10 feet. No other evidence recovered. Set 2 1/2" aluminum monument and made BTs.

- (c) In the plan view drawing below, provide reference ties to at least 4 witness monuments, or, if the location is within a municipality, to at least 2 witness monuments. (Witness monuments shall be made of concrete, natural stone, iron or other equally durable material.)
Describe witness monuments.

- (d) Show a plan view drawing depicting the relevant monuments and reference ties which is sufficient in detail to enable accurate relocation of the corner monument if the corner monument is disturbed. Indicate north.

1. 2 1/2" aluminum monument stamped to identify the corner location.
2. Red Oak, 14", N.70°E., 15.90 feet.
3. Red Oak, 12", S.42°W., 17.24 feet
4. Sugar, 6", N.22°W., 32.91 feet
5. Steel Sign Post, North, 0.90 feet



- (e) Describe any material discrepancy between the location of the corner as restored or reestablished and the location of that corner as previously restored or reestablished by distance and direction. Show the discrepancy on the plan view drawing under (d), above. Show the distances between the corner as previously restored or reestablished and (1) the corner as restored or reestablished, and (2) to at least 2 of the witness monuments shown on the drawing in (d), above.

None.

- (f) Was the corner restored through acceptance of (1) an obliterated evidence location, or, (2) a found perpetuated location?

(2) a found perpetuated location.

- (g&h) Was the corner reestablished through lost corner proportionate methods? If so, show the method, including the directions and distances to other public land survey corners used as evidence or used for proportioning in determining the corner location?

No.

- (1) I, Alan D. Harrison
(Type or print name) certify that the corner location shown on this record was determined by me or under my direction and control and that this U.S. Public Land Survey Monument Record is correct and complete to the best of my knowledge and belief.

Signature

Date

12/3/86

