

NOV 08 2023

CORTNEY BRITTEN CLEEREMAN
REGISTER OF DEEDS

241609

U S PUBLIC LAND SURVEY MONUMENT RECORD - ADDENDUM

NOTE: This form is intended and designed to fulfill all requirements of Wisconsin Administrative Code, Chapter A-E 7.08 U.S. Public Land Survey Monument Record (3) (a-i)

A-E 7.08(3)(a) Identity of corner:
SOUTHEAST CORNER SECTION 07,
TOWNSHIP 34 NORTH,
RANGE 14 EAST OF THE 4TH PM,
TOWN OF FREEDOM,
COUNTY OF FOREST

WISCORS - FOREST COUNTY
N: 521,541.480 USft (XXX,XXX.XXX)
E: 867,491.481 USft (XXX,XXX.XXX)
Datum: NAD83 (2011)
GNSS Method RTK
GNSS Control WISCORS VRS



The coordinate value shown has been verified by the average of two or more GPS observations at a markedly different time. Coordinates shown in parenthesis are previously published values.

A-E 7.08(3)(b)

Original Surveyor: James McBride

Date of Original Survey Commenced: August 10, 1859
Completed: August 20, 1859

Original Accessories:
Hemlock 24 N 73° W 24 Links
Hemlock 10 N 12° E 46 Links
Hemlock 24 S 55° E 27 Links
Hemlock 30 S 60° W 28 Links

See previous - U.S. PUBLIC LAND SURVEY MONUMENT RECORD - J-5 - 1986 - Surveyor 1651 - Alan D. Harrison - THENCE:

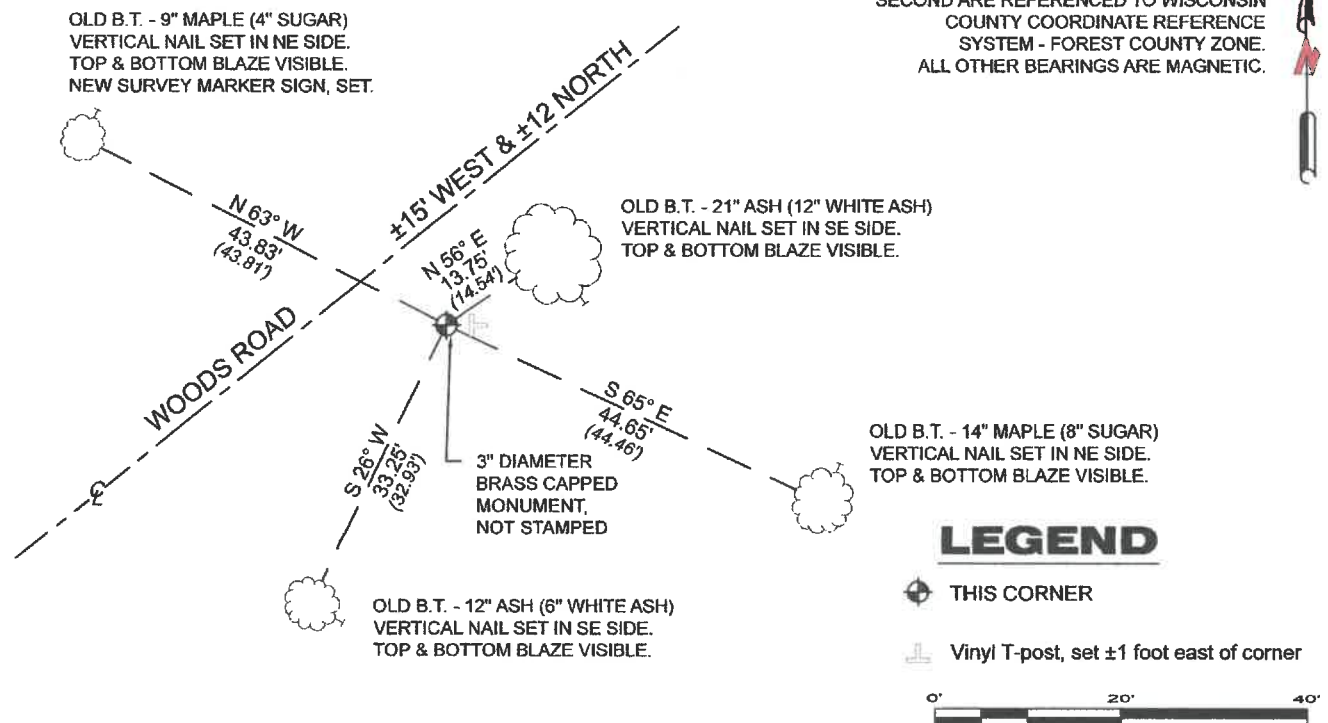
1988 - Surveyor 1651 - Alan D. Harrison - indicates this position as "2" brass capped monument, found in place" on Forest Co. Surveyor File #341407-19980000.

September 16, 2006 - Surveyor 2197 - Michael A. Trembl - indicates this position as "2" iron pipe with brass cap" on Certified Survey Map Volume 7 Page 178.

May 24, 2007 - Surveyor 2197 - Michael A. Trembl - indicates this position as "2" iron pipe with brass cap" on Certified Survey Map Volume 7 Page 215.

May 9, 2023 - I found a 3" diameter brass capped monument flush with the ground. The brass cap is not stamped. I also found 4 of Harrison's bearing trees alive, and his steel sign post, all in good condition.

A-E 7.08(3)(c)(d) Plan view of corner with references to at least 4 witness monuments.



A-E 7.08(3)(e) 1859 Surveyor set a post, 1986 Surveyor set a 2" brass capped monument, 2006 & 2007 Surveyor found a 2" iron pipe with brass cap. 2023. I found a 3" diameter brass capped monument.

A-E 7.08(3)(f) I accept this monument as a FOUND PERPETUATED LOCATION of the corner.

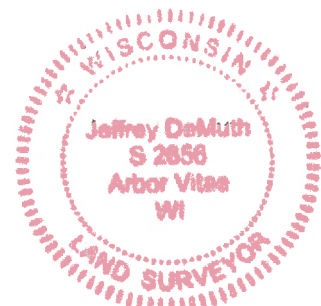
A-E 7.08(3)(g)(h) This corner was not determined through lost-corner-proportionate methods.

A-E 7.08(3)(i) I, Jeffrey L. DeMuth, Professional Land Surveyor No. S-2656, hereby certify that the corner location on this record was determined by me or under my direction and control, and that this U.S. Public Land Survey Monument Record is correct and complete, to the best of my knowledge, and belief.

SIGNATURE

May 11, 2023

DATE



43414070000

J5

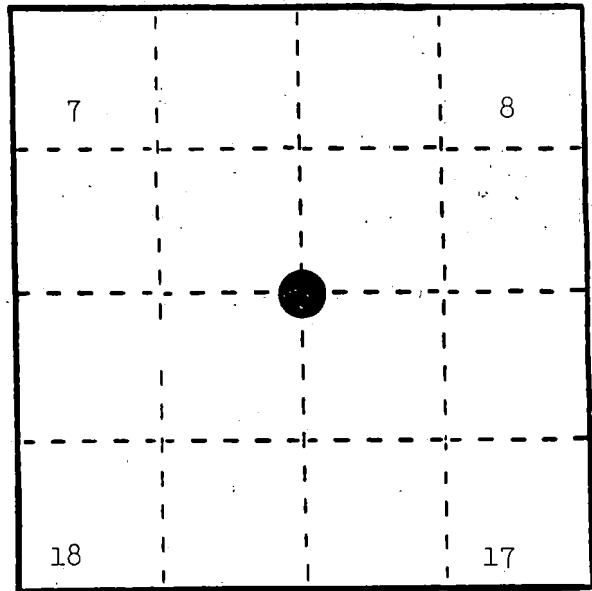
U. S. PUBLIC LAND SURVEY MONUMENT RECORD

INSTRUCTIONS: This record shall show the location of the corner and shall include all of the following nine elements (a through i).

- (a) Identify the corner by reference to the U.S. public land survey system.

○ = Corner monument restored.

Corner to Sections 7, 8, 17, and 18, T.34N., R.14E., Forest County, Wisconsin.



REGISTER'S OFFICE
Forest County, Wis.

Received for record this 3rd day
of December A.D., 1986 at
1:30 o'clock P.M. and recorded
in Vol. CORNER RESTORATIONS

Page 5-5
Paul Aschenbrenner
Register of Deeds

- (b) Describe any record evidence, monument evidence, occupational evidence, testimonial evidence or any other material evidence you considered, and whether the monument was found or placed.

In 1859, James McBride set wood post and made the following BTs: Hemlock, 24", N.73°W., 24 links; Hemlock, 10", N.12°E., 46 links; Hemlock, 24", S.55°E., 27 links; Hemlock, 30", S.60°W., 28 links.

In 1936, Jerome Breen, CCC Compassman, found 5" scribed wood post and Maple BT, 32", S.40°W., 0.15 links. Corner on old railroad right-of-way.

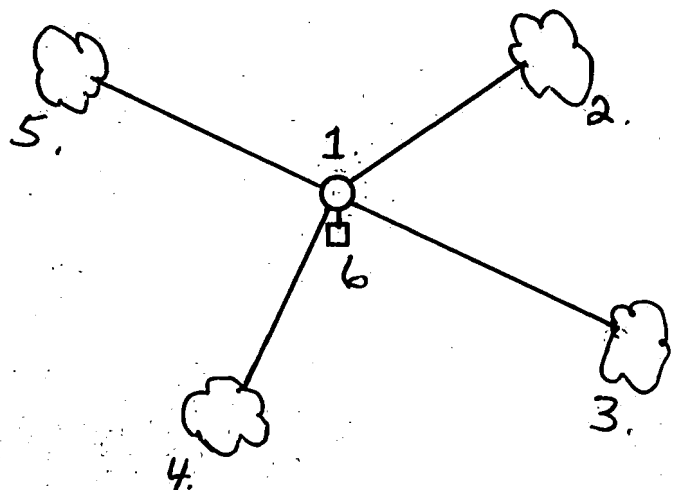
In 1963, Jean Resvick found 5" scribed wood post in rock mound and stumps of northeast and southeast original BTs and Maple BT found by CCC. Swamp calls south and west fit within 1/2 chain. Set brass cap monument in place of post.

In 1986, Alan Harrison made new BTs to reference ^{THE} corner.

- (c) In the plan view drawing below, provide reference ties to at least 4 witness monuments, or, if the location is within a municipality, to at least 2 witness monuments. (Witness monuments shall be made of concrete, natural stone, iron or other equally durable material.)
Describe witness monuments.

- (d) Show a plan view drawing depicting the relevant monuments and reference ties which is sufficient in detail to enable accurate relocation of the corner monument if the corner monument is disturbed. Indicate north.

- 2" brass capped monument stamped to identify the corner location.
- White Ash, 12", N.56°E., 14.54 feet
- Sugar, 8", S.65°E., 45.46 feet
- White Ash, 6", S.26°W., 32.93 feet
- Sugar, 4", N.63°W., 43.81 feet
- Steel Sign Post, South, 1.60 feet



(e) Describe any material discrepancy between the location of the corner as restored or reestablished and the location of that corner as previously restored or reestablished by distance and direction. Show the discrepancy on the plan view drawing under (d), above. Show the distances between the corner as previously restored or reestablished and (1) the corner as restored or reestablished, and (2) to at least 2 of the witness monuments shown on the drawing in (d), above.

None.

(f) Was the corner restored through acceptance of (1) an obliterated evidence location, or, (2) a found perpetuated location?

(2) a found perpetuated location.

(g&h) Was the corner reestablished through lost corner proportionate methods? If so, show the method, including the directions and distances to other public land survey corners used as evidence or used for proportioning in determining the corner location?

No.

(i) I, Alan D. Harrison
(Type or print name) certify that the corner location shown on this record was determined by me or under my direction and control and that this U.S. Public Land Survey Monument Record is correct and complete to the best of my knowledge and belief.

Signature

Date

