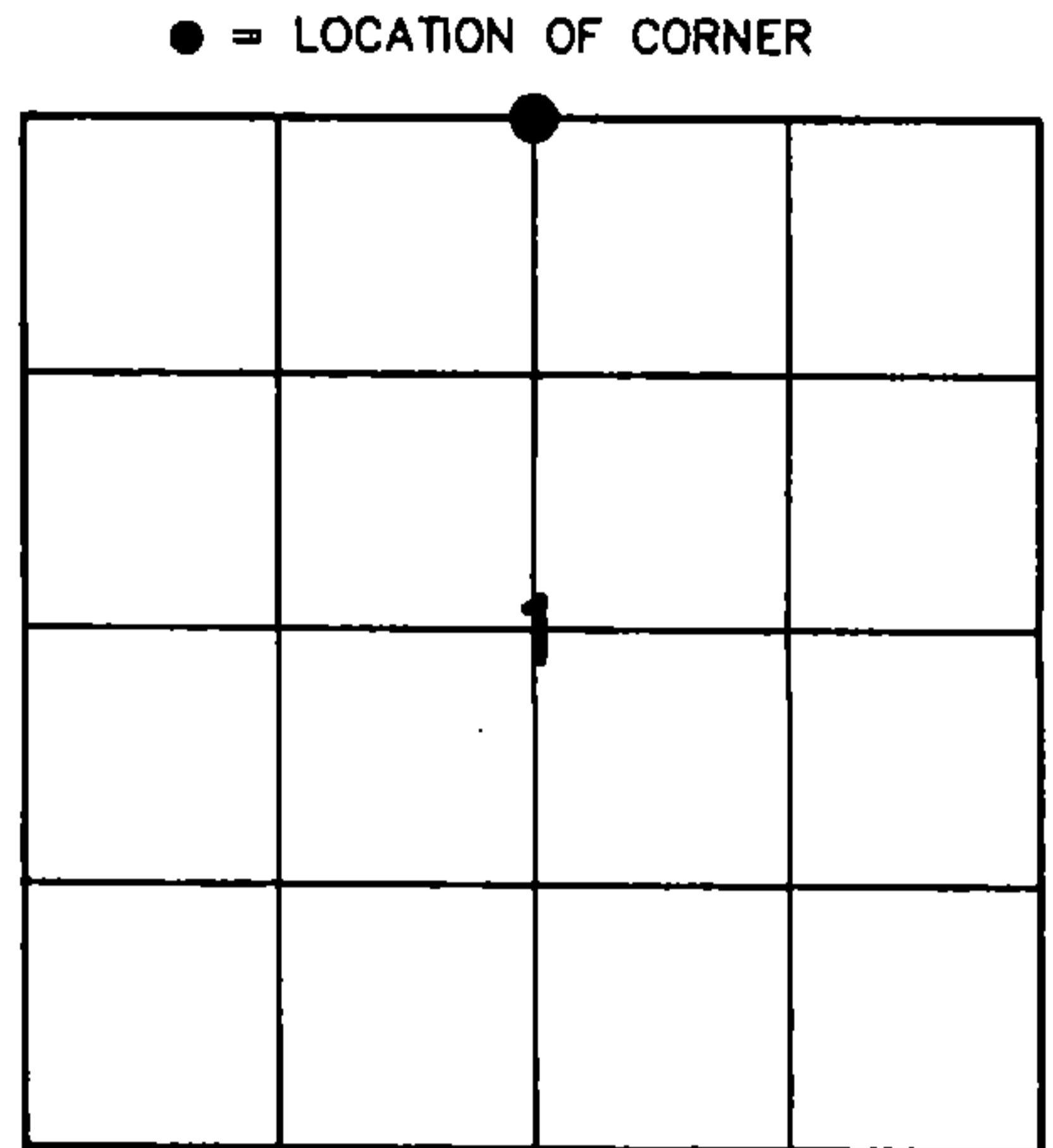


# U.S. PUBLIC LAND SURVEY MONUMENT RECORD

HISTORY OF ORIGINAL CORNER ESTABLISHMENT AND SUBSEQUENT RESTORATION AND DESCRIPTION OF ANY RECORD, MONUMENT OCCUPATIONAL, TESTIMONIAL OR OTHER EVIDENCE CONSIDERED:

THE ORIGINAL CORNER WAS SET BY ALFRED MILLARD WITH THE ORIGINAL BEARING TREES OF:  
 12" YEL BIRCH - N69°W 16 LINKS  
 11" ELM - S35°W 48 LINKS  
 1961 - DOBRATZ SHOWS USING A PRORATED POSITION AT CORNER LOCATION BU DOS NOT INDICATE SETTING ANYTHING PER MAP #40418, LANGLADE COUNTY RECORDS  
 1998 - PRITZLAFF WAS WORKING IN SEC 36 T34N R13E SHOWS THIS CORNER AS AN EXISTING FOREST COUNTY MONUMENT PER FOREST COUNTY RECORDS  
 2012 - RUSCH FD AN EXISTING PIPE WITH A PLASTIC CAP WITH PRITZLAFF'S REGISTRATION NUMBER.  
 2016 - I ALSO FOUND THE PLASTIC CAP AND MANY OF RUSCH'S TIES AND SET AN ALUMINUM CAP IN THE PIPE



SECTION 1  
 TOWNSHIP 33 NORTH, RANGE 13 EAST  
 TOWN OF LANGLADE  
LANGLADE COUNTY, WISCONSIN

CORNER WAS: (CHECK ALL THAT APPLY)

- RESTORED THROUGH ACCEPTANCE OF AN OBLITERATED EVIDENCE LOCATION
- RESTORED THROUGH ACCEPTANCE OF A FOUND PERPETUATED LOCATION
- CONSIDERED A LOST CORNER AND REESTABLISHED THROUGH LOST CORNER PROPORTIONATE METHODS (INCLUDE A PLAN VIEW DRAWING SHOWING DISTANCES AND DIRECTIONS TO OTHER PUBLIC LAND SURVEY CORNERS USED FOR PROPORTIONING AND DETERMINING THE CORNER LOCATION)
- RESTORED OR REESTABLISHED IN A LOCATION THAT DIFFERS FROM A PREVIOUS RESTORATION OR RE-ESTABLISHMENT (INCLUDE A PLAN VIEW DRAWING AND INDICATE WHAT WAS SET AND/OR FOUND)
- CHECK IF THERE IS ADDITIONAL INFORMATION ON BACK

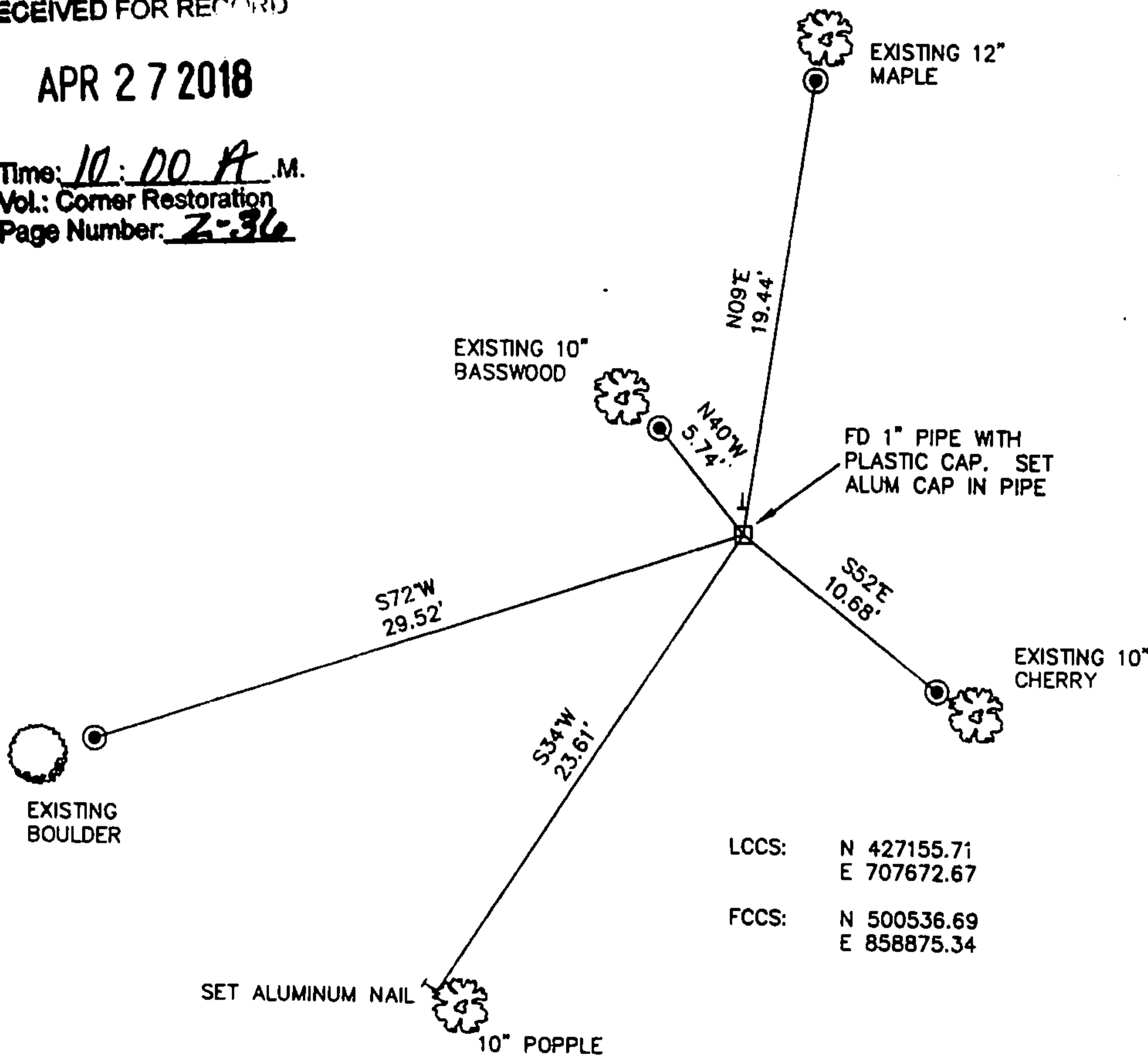
DESCRIBE THE MONUMENT AND ACCESSORIES USED TO PERPETUATE THE LOCATION OF THE CORNER. (INCLUDE A PLAN VIEW DRAWING AND INDICATE WHAT WAS SET AND/OR FOUND) ALSO INCLUDE FOUR TIES TO THE SECTION CORNER AND DESCRIPTION OF THE TIES.

FOREST COUNTY, WI  
 CORTNEY BRITTEN CLEEREMAN  
 REGISTER OF DEEDS  
 RECEIVED FOR RECORD

APR 27 2018

Time: 10:00 A.M.  
 Vol.: Corner Restoration  
 Page Number: 2-36

- FOUND 3/4" IRON REBAR
- BEARINGS REFERENCED TO MAGNETIC
- T - WHITE VINYL POST SET
- TREES SHOWN HAVE BEARING TREE SIGNS NAILED TO FACE



LCCS: N 427155.71  
 E 707672.67  
 FCCS: N 500536.69  
 E 858875.34

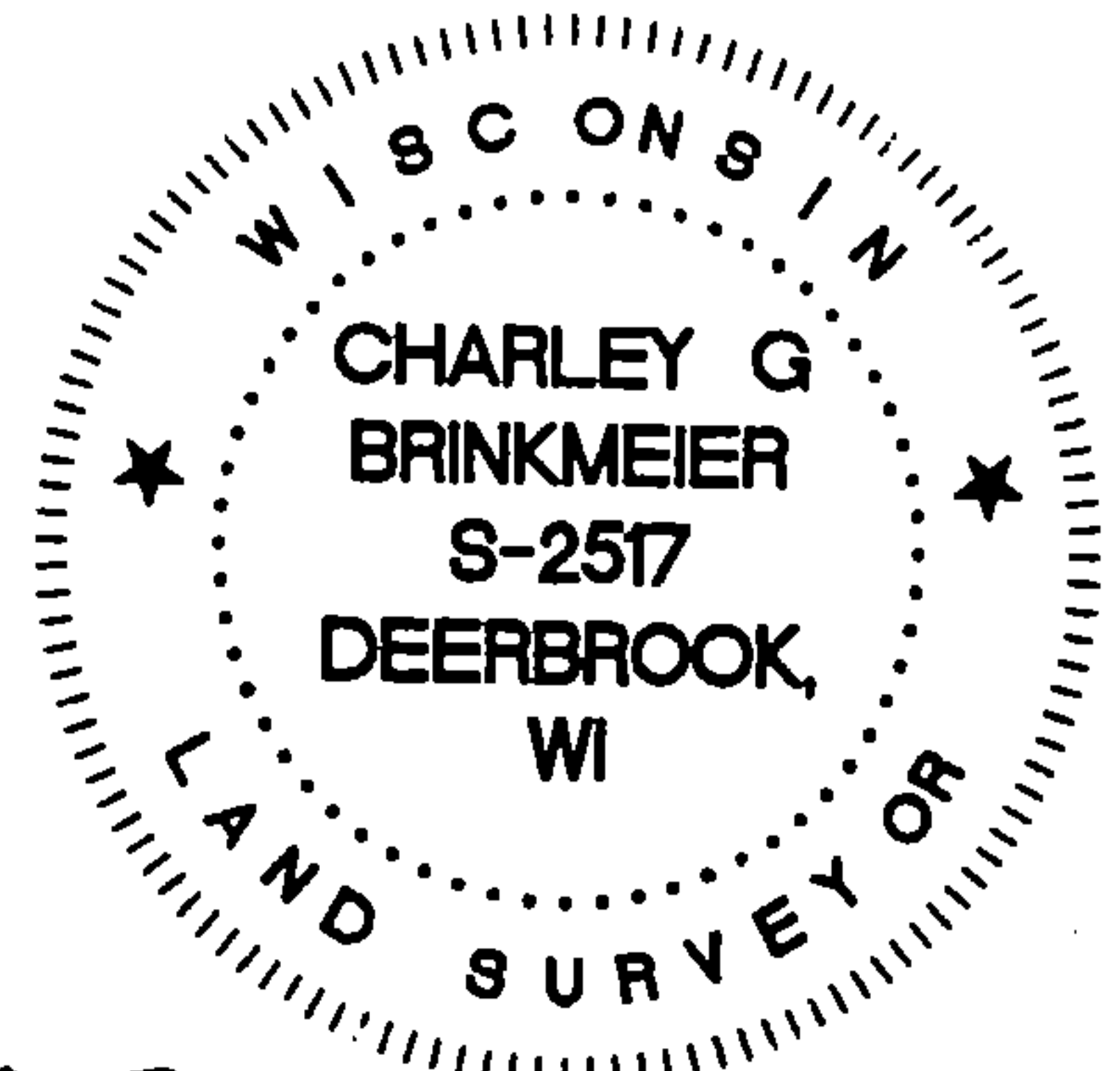


CHARLEY G. BRINKMEIER

(type or print name) CERTIFY THAT THE CORNER LOCATION SHOWN ON THIS RECORD WAS DETERMINED BY ME OR UNDER MY DIRECTION AND CONTROL AND THAT THIS U.S. PUBLIC LAND SURVEY MONUMENT RECORD IS CORRECT AND COMPLETE TO THE BEST OF MY KNOWLEDGE AND BELIEF.

*Charley G. Brinkmeier*  
 SIGNATURE

1-17-17  
 DATE



INDEX NO.

43413360020

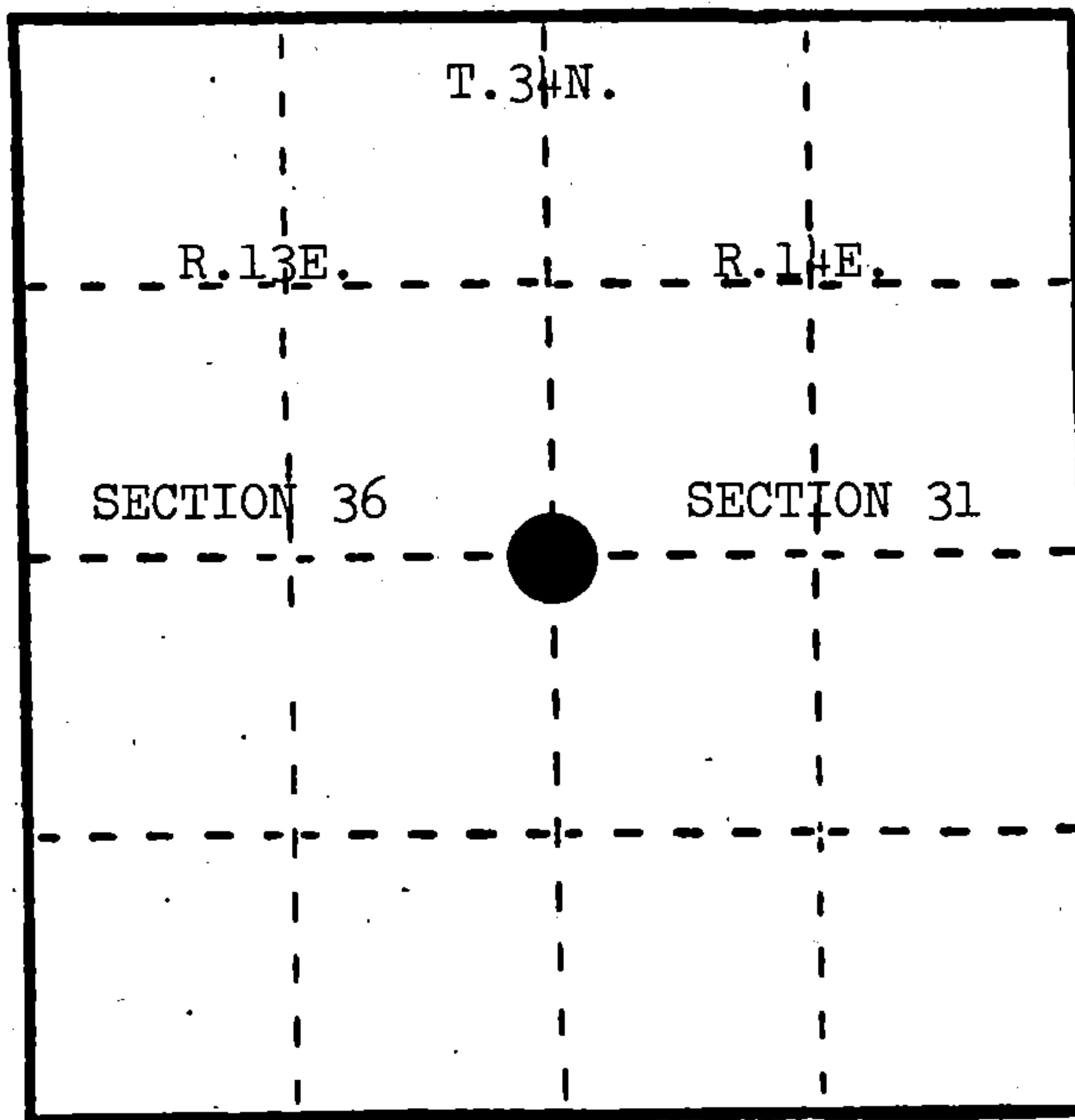
U. S. PUBLIC LAND SURVEY MONUMENT RECORD

INSTRUCTIONS: This record shall show the location of the corner and shall include all of the following nine elements (a through i).

(a) Identify the corner by reference to the U.S. public land survey system.

○ = Corner monument restored.

Quarter corner to Sections 36 and 31, T.34N., R.13-14E.



REGISTER'S OFFICE  
Forest County, Wis.  
Received for record this 15th day  
of April A.D., 1985 at  
3:10 o'clock P.M. and recorded  
in Vol. CORNER RESTORATIONS  
page X-1  
Paul Aschenbrenner  
Register of Deeds

(b) Describe any record evidence, monument evidence, occupational evidence, testimonial evidence or any other material evidence you considered, and whether the monument was found or placed.

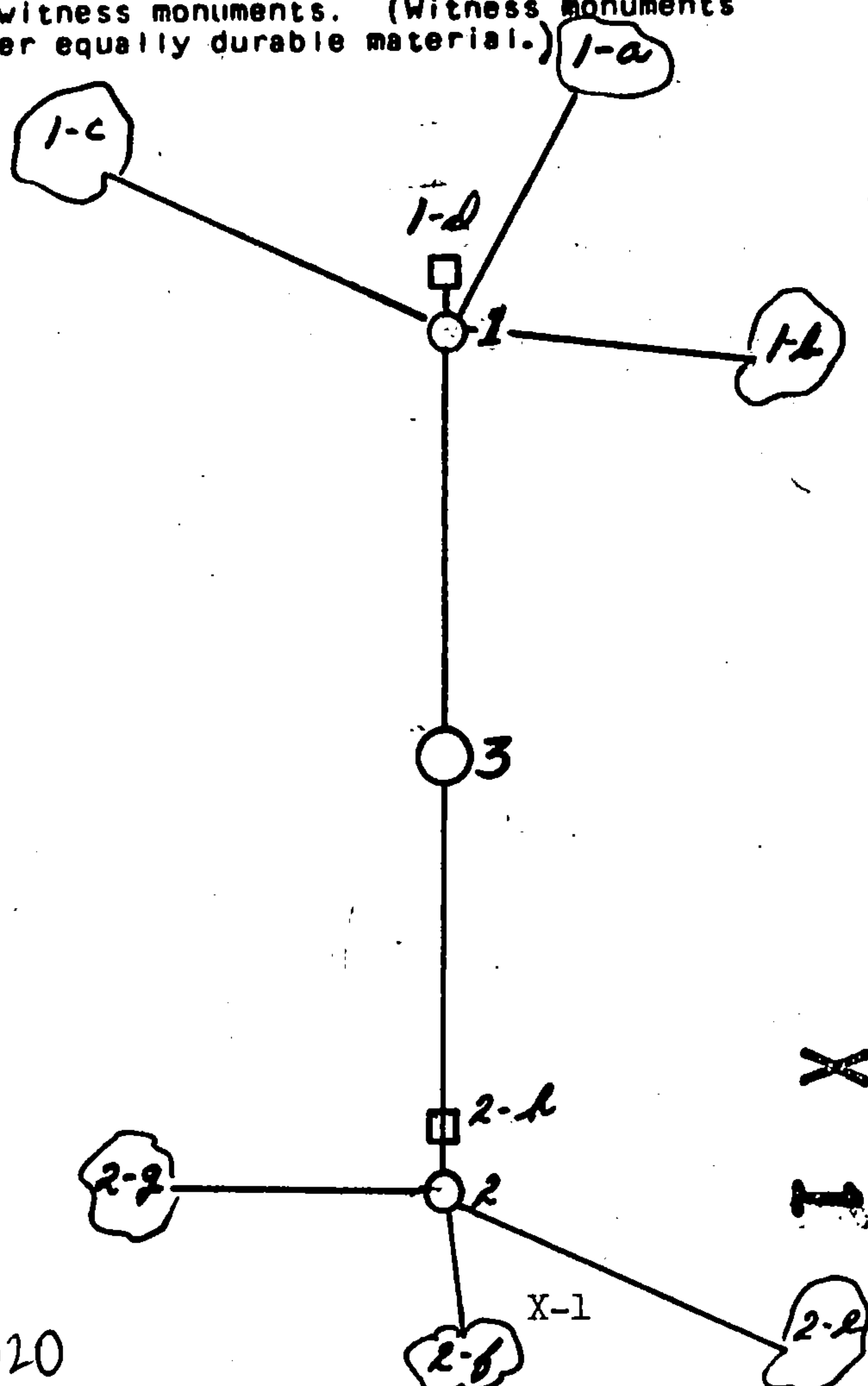
June, 1857, Alfred Millard set wood post and made the following BTs: Yellow Birch, 22", N.52°W., 15 links; Elm, 18", S.18°E., 40 links.

March, 1983, Milo Stefan found no evidence of corner. Corner position restored by proportional measure. Placed a railroad spike in surface of State Highway "52" to mark corner position.

(c) In the plan view drawing below, provide reference ties to at least 4 witness monuments, or, if the location is within a municipality, to at least 2 witness monuments. (Witness monuments shall be made of concrete, natural stone, iron or other equally durable material.) Describe witness monuments.

(d) Show a plan view drawing depicting the relevant monuments and reference ties which is sufficient in detail to enable accurate relocation of the corner monument if the corner monument is disturbed. Indicate north.

1. Witness Corner, 2" x 36" aluminum monument, N.00°34.8'E., 51.88 feet.
  - a. Sugar, 10", N.25°E., 28.45 feet
  - b. Sugar, 5", S.88°E., 8.30 feet
  - c. Sugar, 7", N.70°W., 24.69 feet
  - d. Steel Sign Post, North, 1.20 feet
2. Witness Corner, 2" x 36" aluminum monument, S.00°34.8'W., 41.92 feet.
  - e. Sugar, 6", S.65°E., 44.35 feet
  - f. Sugar, 8", S.04°E., 55.68 feet
  - g. Sugar, 9", N.89°W., 15.02 feet
  - h. Steel Sign Post, North, 2.20 feet
3. Railroad spike in surface of road.



(e) Describe any material discrepancy between the location of the corner as restored or reestablished and the location of that corner as previously restored or reestablished by distance and direction. Show the discrepancy on the plan view drawing under (d), above. Show the distances between the corner as previously restored or reestablished and (1) the corner as restored or reestablished, and (2) to at least 2 of the witness monuments shown on the drawing in (d), above.

None.

(f) Was the corner restored through acceptance of (1) an obliterated evidence location, or, (2) a found perpetuated location?

(g&h) Was the corner reestablished through lost corner proportionate methods? If so, show the method, including the directions and distances to other public land survey corners used as evidence or used for proportioning in determining the corner location?

Yes.

Affix Land Surveyor Seal



(i) I, Milo E. Stefan  
(Type or print name) certify that the corner location shown on this record was determined by me or under my direction and control and that this U.S. Public Land Survey Monument Record is correct and complete to the best of my knowledge and belief.

Milo E. Stefan  
Signature

2/19/55  
Date