

CERTIFIED LAND CORNER RESTORATION

Index No. Y 19

State of Wisconsin }
County of Forest } ss.

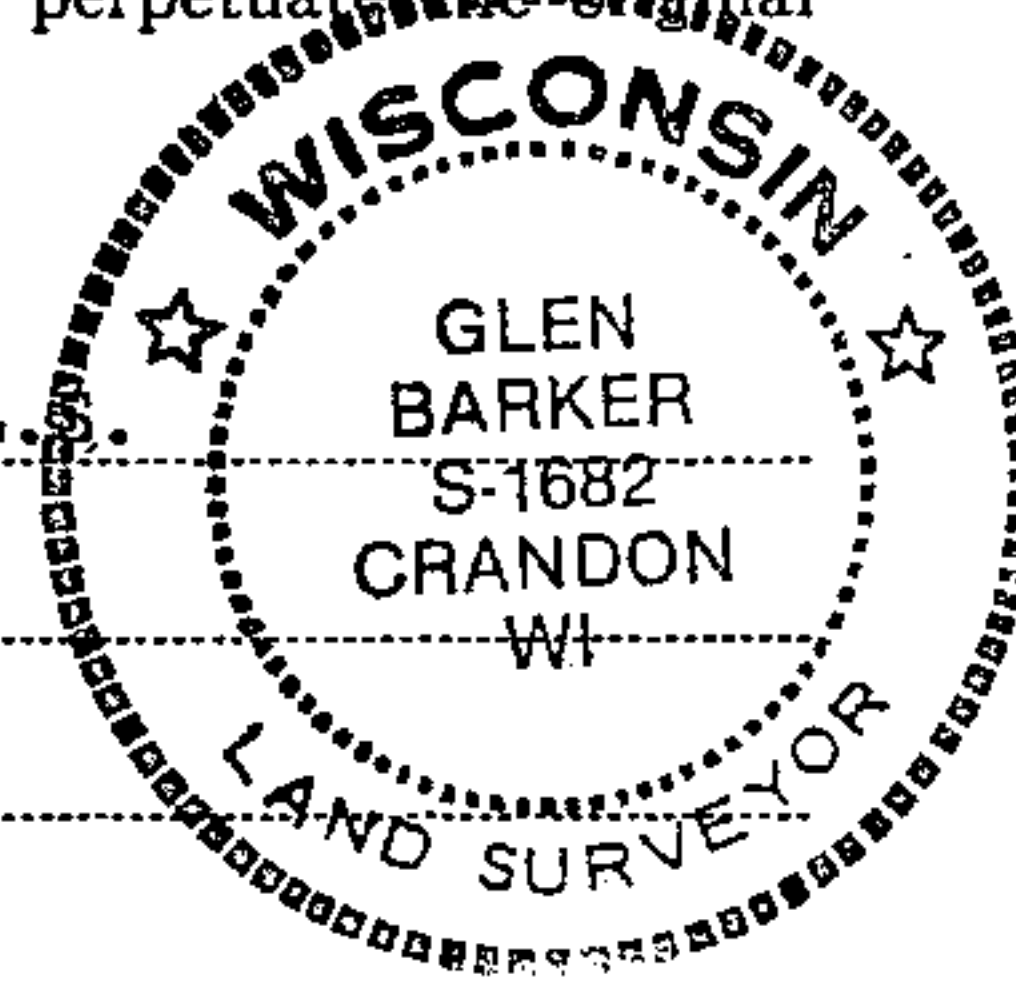
History of original corner establishment:
No evidence of any previous corner.

I Glen Barker, do hereby
certify that on the 12th day
of December, 19 82, I ~~found~~ found estab.
~~evidence of the~~ SC 1/16
corner of section 35
Township 34, North, Range
13 East, Fourth Principal Meridian,
as described hereon; and that from this evidence
I established a new monument and accessories
as described hereon to perpetuate the original
location of this corner.

Resident witnesses:

J. Claflin - R.L.S.

H. Wagoner



Description of corner evidence found:

Total distance from 1/4 corner between sections 2 & 35 T33 & 34N R13E to C1/4 section 35
is 2761.98 ft. Set SC1/16 1380.99 ft. intermediate.

Description of monument and accessories I established to perpetuate the original location of this corner.

Set a 1" iron pipe with 2" diameter alloy cap stamped:

S1682

Monument projects 18" above ground.

T34N R13E

Marked NBTs

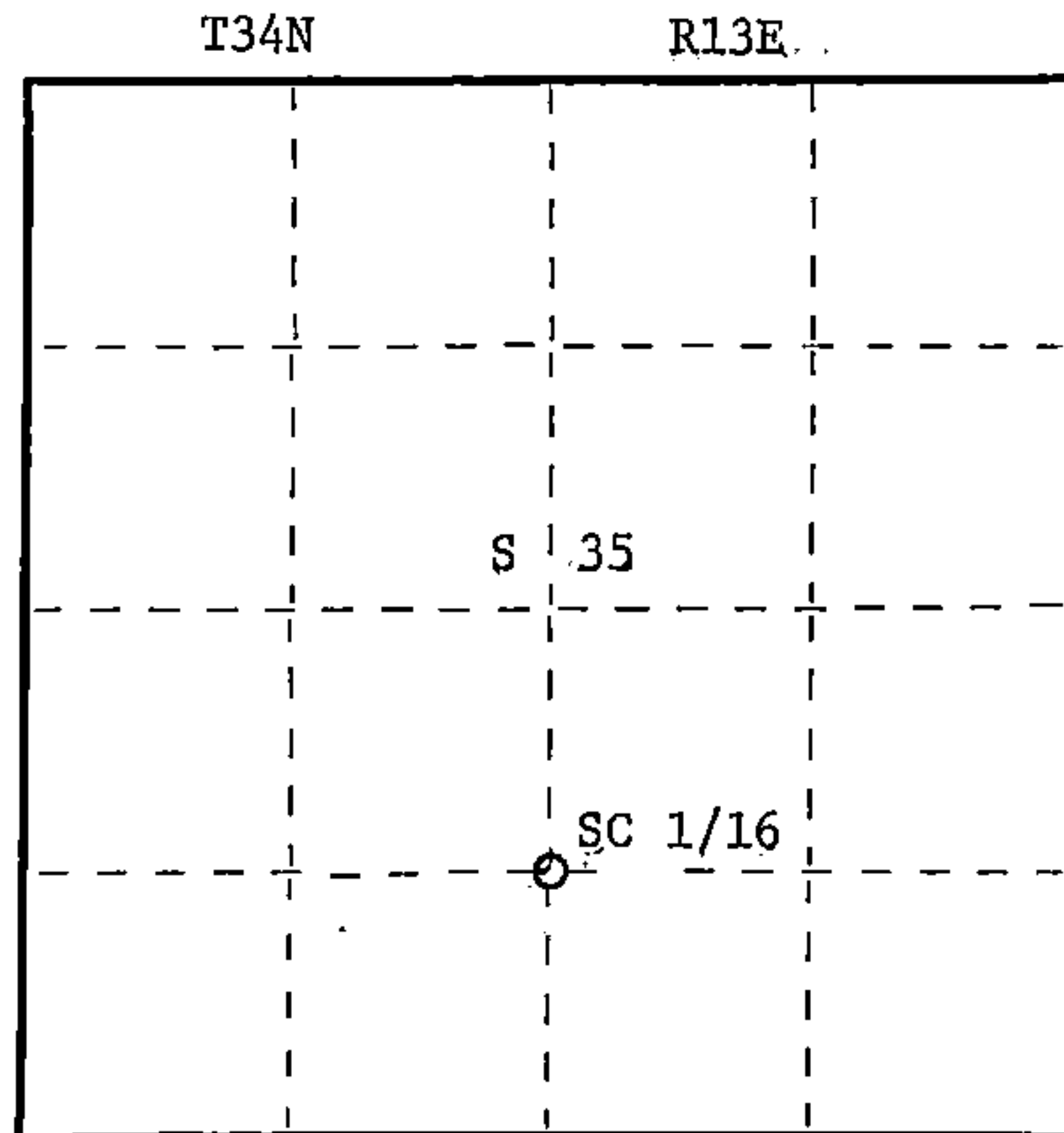
Balsam 11" S26E 5.15 ft.

SC 1/16 S 35

Balsam 10" N20W 17.37 ft.

Scribed 1/16 - B.T.

CPI - 1983



○ = Corner monument restored.

Dated at Rhinelander, Wis., this 6th day of May, 19 83.

Signature Glen Barker Title Registered Land Surveyor Registration No. S1682
(County Surveyor, Registered Land Surveyor, or other duly authorized official)

Office of Register of Deeds, County of Forest, I hereby certify that the within
instrument was filed in this office for record on the 19th day of May, 19 83
at 3:00 o'clock P. M.

Eugene Stetson
(Register of Deeds)

By _____ Deputy

DOCUMENT NO.
123426

FORM 985
H.C. Miller Company
Stock No. 26272

43413351020

CERTIFIED LAND CORNER RESTORATION

Index No. **Y-19**

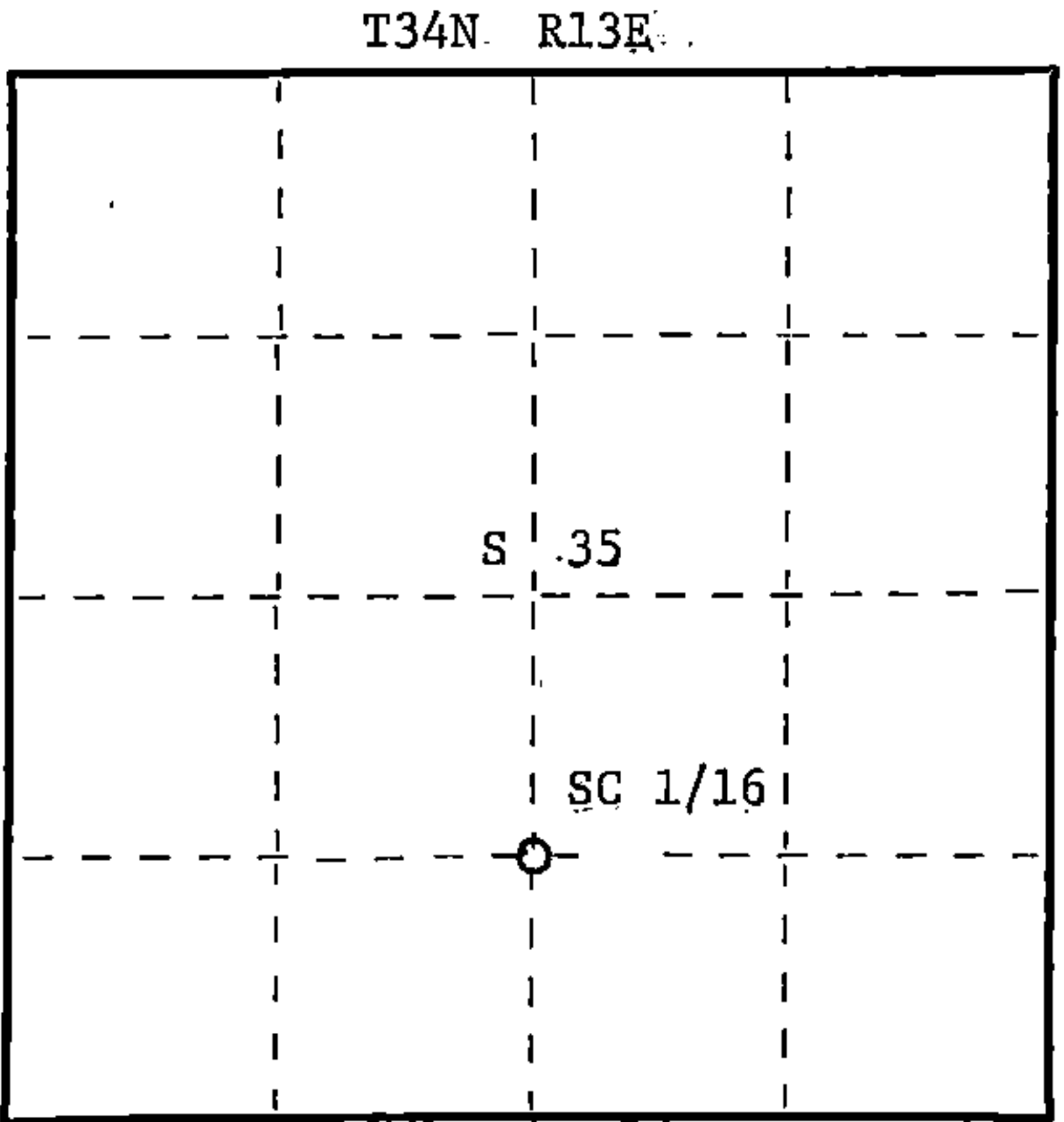
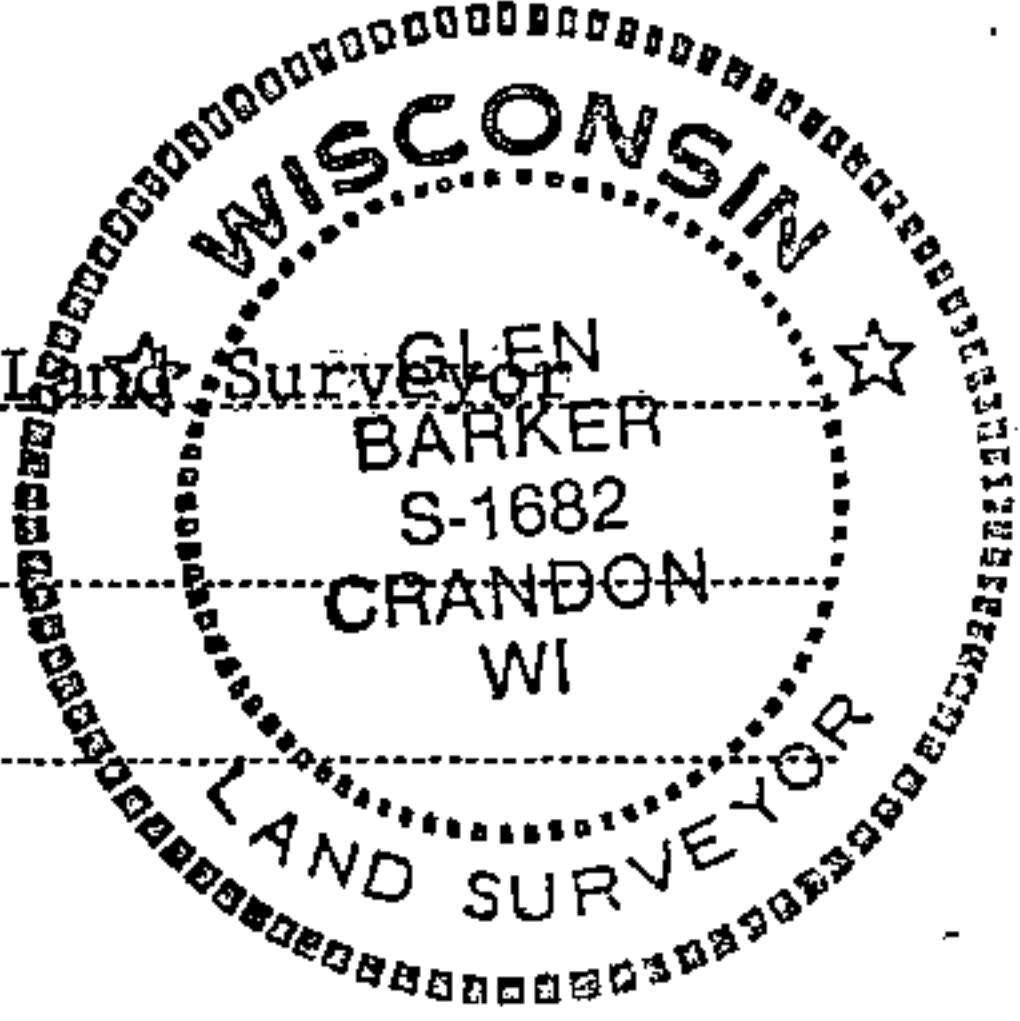
State of Wisconsin } ss.
County of Forest

I Glen Barker, do hereby
certify that on the 11th day
of August, 1983, I ~~found~~
~~re-established~~ SC 1/16
corner of Section 35
Township 34, North, Range
13 East, Fourth Principal Meridian,
as described hereon; and that from this evidence
I established a new monument and accessories
as described hereon to perpetuate the original
location of this corner.

Resident witnesses:

J. Claflin, Reg. Land Surveyor

H. Wagoner



○ = Corner monument restored.

History of original corner establishment:

No evidence of any previous corner.

Description of corner evidence found:

Total distance from 1/4 corner between sections 2 and 35 T33 & 34N to C 1/4 corner
position is 2761.98 feet at bearing N 0-13-42 W.
Set SC 1/16 1380.99 feet intermediate.

Description of monument and accessories I established to perpetuate the original location of this corner.

Set a 1" iron pipe with 2" diameter alloy cap, stamped:
Monument projects 18" above ground.
Marked NBT's:

Balsam 11" S26E 5.15 feet
Balsam 10" N20W 17.37 feet
scribed 1/16 - B.T.

S1682
T34N R13E
SC 1/16 S+35
CPI - 1982

Dated at Rhinelander, Wis., this 19th day of April, 1983

Signature Glen Barker Title Registered Land Surveyor Registration No. S1682
(County Surveyor, Registered Land Surveyor, or other duly authorized official)

Office of Register of Deeds, County of Forest, I hereby certify that the within
instrument was filed in this office for record on the 19th day of May, 1983
at 3:00 o'clock P. M.

Eugene Stutzny
(Register of Deeds)
By _____ Deputy

DOCUMENT NO.
123425

Stock No. 26272

HC Miller Company
Madison, Wisconsin

FORM 985

43413 351020