

225141

U.S. PUBLIC LAND SURVEY MONUMENT RECORD

HISTORY OF ORIGINAL CORNER ESTABLISHMENT AND SUBSEQUENT RESTORATION AND DESCRIPTION OF ANY RECORD, MONUMENT OCCUPATIONAL, TESTIMONIAL OR OTHER EVIDENCE CONSIDERED:

THE ORIGINAL CORNER WAS SET BY ALFRED MILLARD WITH THE ORIGINAL BEARING TREES OF:

12" HEMLOCK - N43°W 32 LINKS

11" HEMLOCK - S45°E 5 LINKS

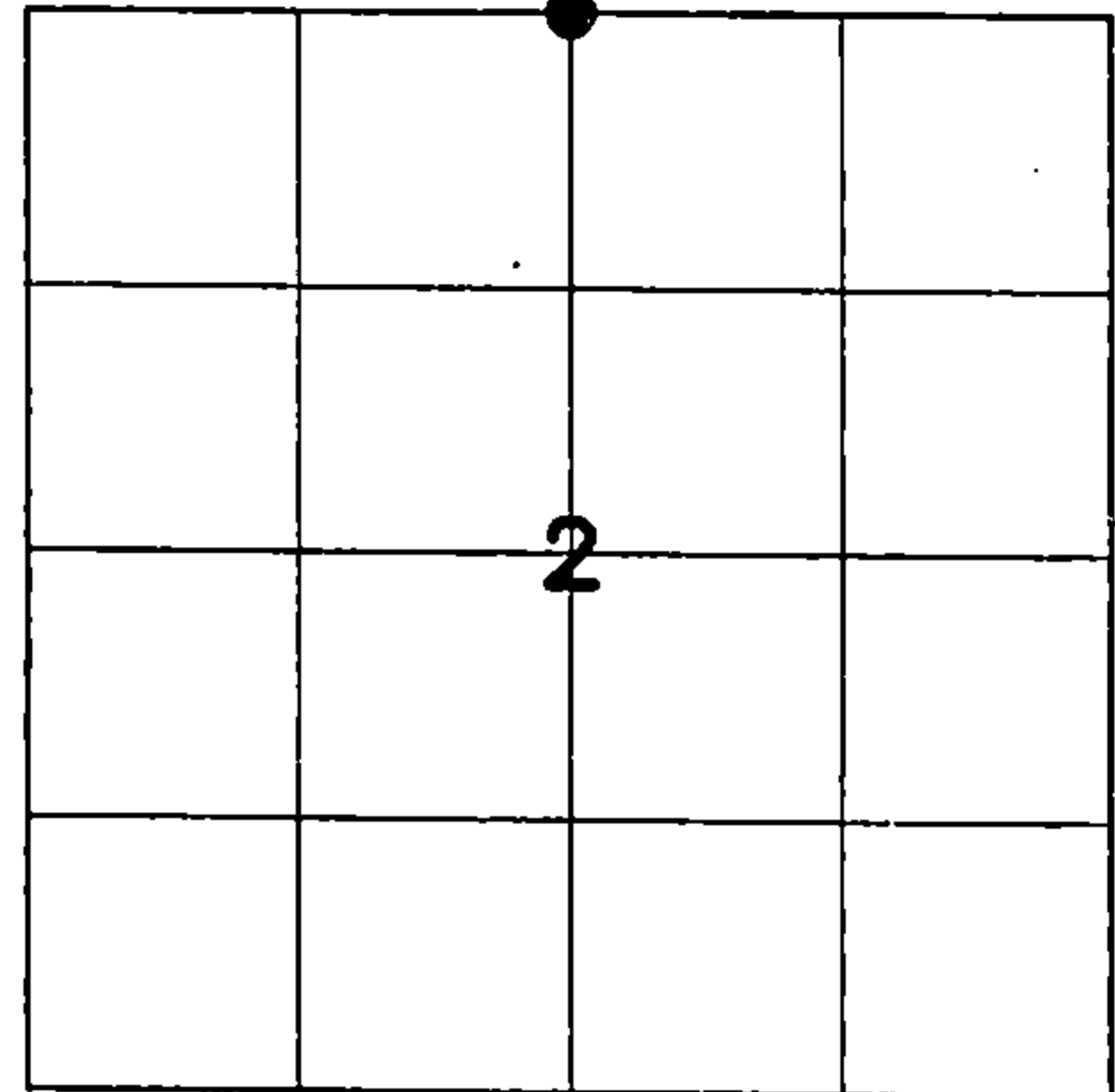
1962-SPERHAK SET 1.25" PIPE WITH 4" ALUMINUM CAP

1969-HALLISY FOUND THE PIPE AND SET ADDITIONAL BEARING TREES OF 8" BASSWOOD S40°W 27.75' AND 12" BASSWOOD N14°W 24'

2012-BLONDHEIM FOUND THE PIPE WITH THE PIPE WITH CAP AND SET ADDITIONAL TIES

2016-I FOUND THE 1.25" PIPE WITH 4" ALUMINUM CAP AND SET TIES AS SHOWN

● = LOCATION OF CORNER

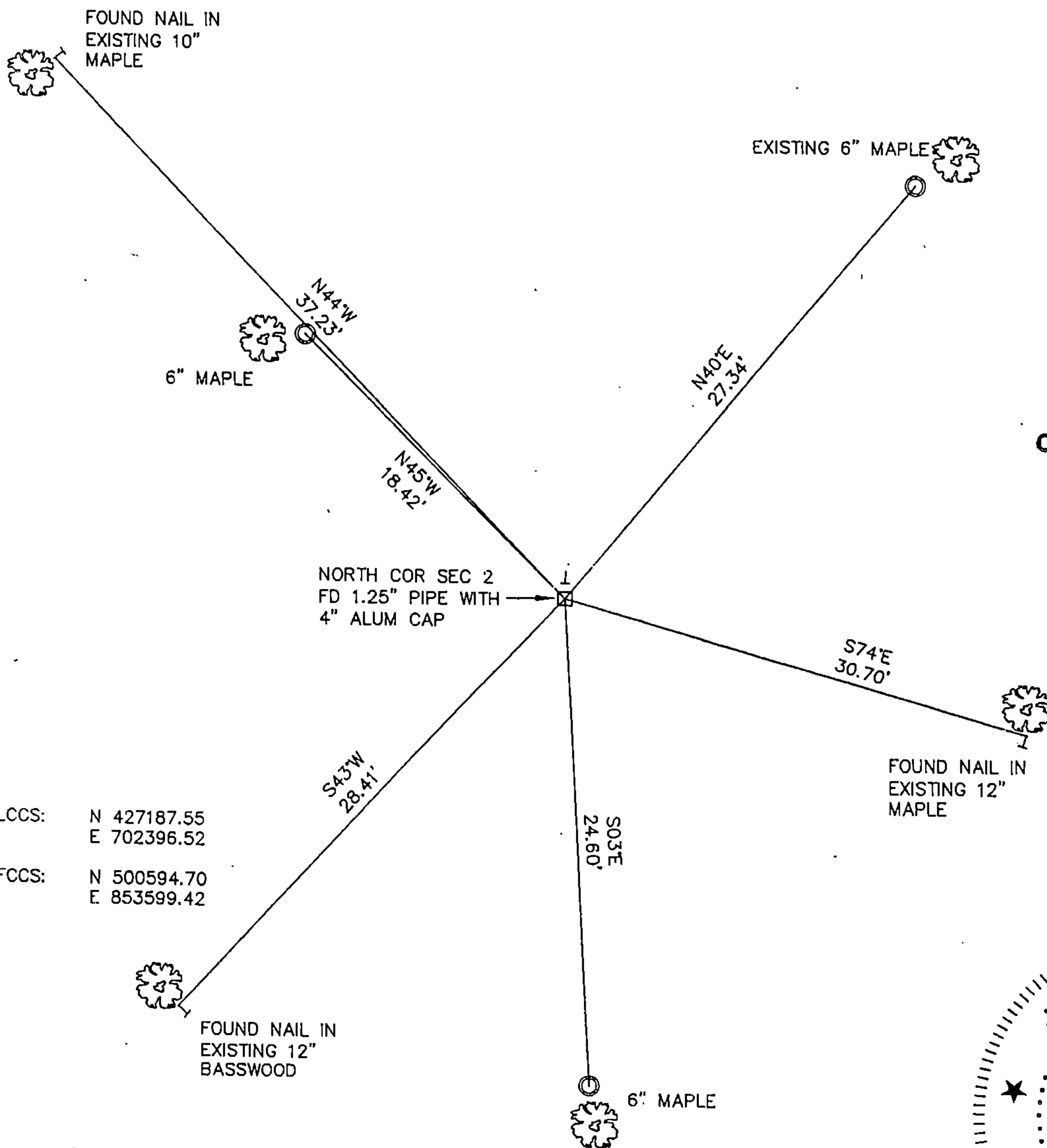


SECTION 2
TOWNSHIP 33 NORTH, RANGE 13 EAST
TOWN OF LANGLADE
LANGLADE COUNTY, WISCONSIN

CORNER WAS: (CHECK ALL THAT APPLY)

- RESTORED THROUGH ACCEPTANCE OF AN OBLITERATED EVIDENCE LOCATION
- RESTORED THROUGH ACCEPTANCE OF A FOUND PERPETUATED LOCATION
- CONSIDERED A LOST CORNER AND REESTABLISHED THROUGH LOST CORNER PROPORTIONATE METHODS (INCLUDE A PLAN VIEW DRAWING SHOWING DISTANCES AND DIRECTIONS TO OTHER PUBLIC LAND SURVEY CORNERS USED FOR PROPORTIONING AND DETERMINING THE CORNER LOCATION)
- RESTORED OR REESTABLISHED IN A LOCATION THAT DIFFERS FROM A PREVIOUS RESTORATION OR RE-ESTABLISHMENT (INCLUDE A PLAN VIEW DRAWING AND INDICATE WHAT WAS SET AND/OR FOUND)
- CHECK IF THERE IS ADDITIONAL INFORMATION ON BACK

DESCRIBE THE MONUMENT AND ACCESSORIES USED TO PERPETUATE THE LOCATION OF THE CORNER. (INCLUDE A PLAN VIEW DRAWING AND INDICATE WHAT WAS SET AND/OR FOUND) ALSO INCLUDE FOUR TIES TO THE SECTION CORNER AND DESCRIPTION OF THE TIES.



○ SET 3/4" X 30" IRON REBAR AT ALL TIE LOCATIONS

BEARINGS REFERENCED TO MAGNETIC

T - WHITE VINYL POST SET

TREES SHOWN HAVE BEARING TREE SIGNS NAILED TO FACE

FOREST COUNTY, WI
CORTNEY BRITTEN CLEEREMAN
REGISTER OF DEEDS
RECEIVED FOR RECORD

APR 27 2018

Time: 10:00 A.M.
Vol.: Corner Restoration
Page Number: 2-19

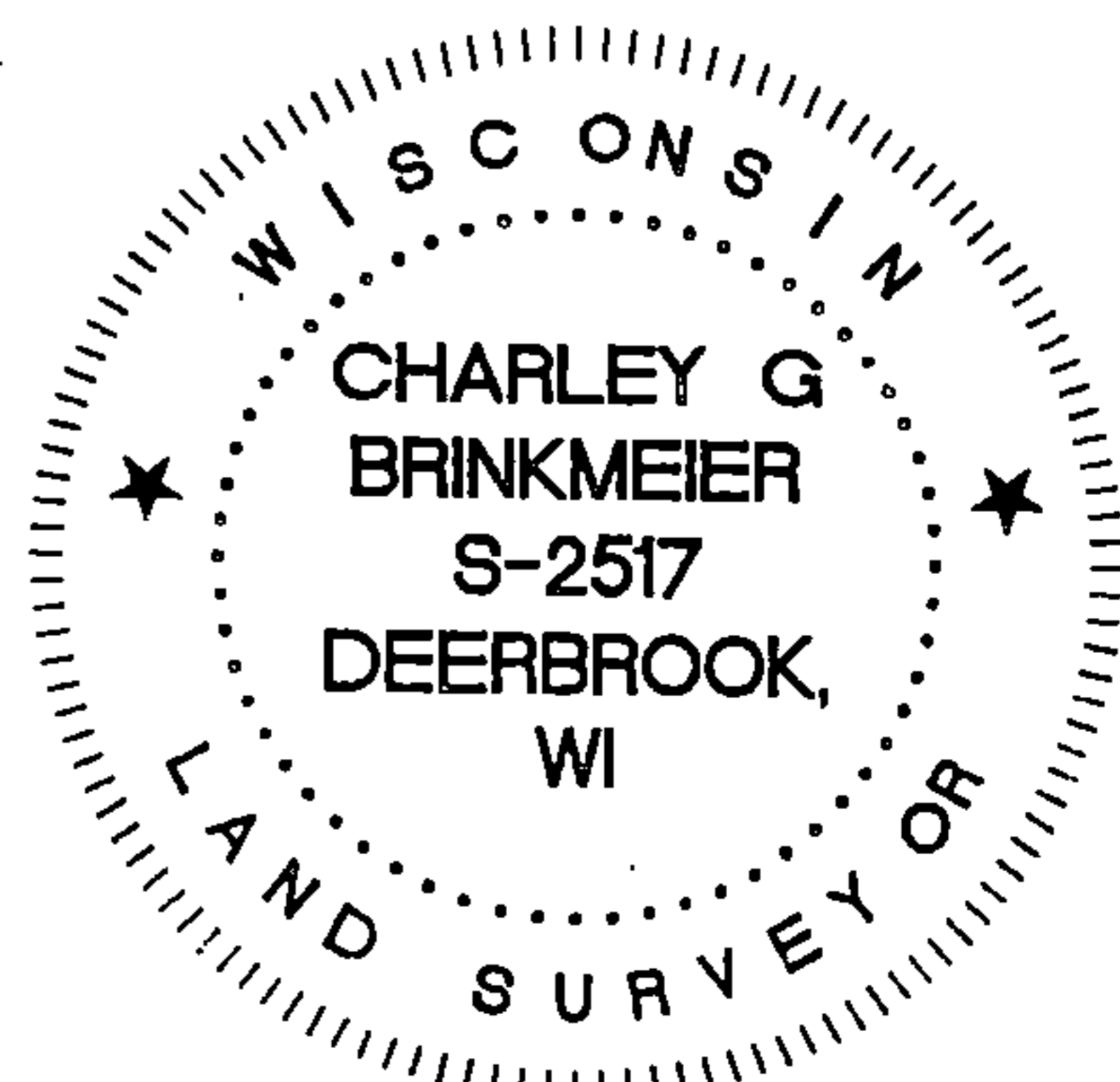
LCCS: N 427187.55
E 702396.52
FCCS: N 500594.70
E 853599.42

CHARLEY G. BRINKMEIER

(type or print name) CERTIFY THAT THE CORNER LOCATION SHOWN ON THIS RECORD WAS DETERMINED BY ME OR UNDER MY DIRECTION AND CONTROL AND THAT THIS U.S. PUBLIC LAND SURVEY MONUMENT RECORD IS CORRECT AND COMPLETE TO THE BEST OF MY KNOWLEDGE AND BELIEF.

Charley G. Brinkmeier
SIGNATURE

1-17-17
DATE



INDEX NO.

43413350020

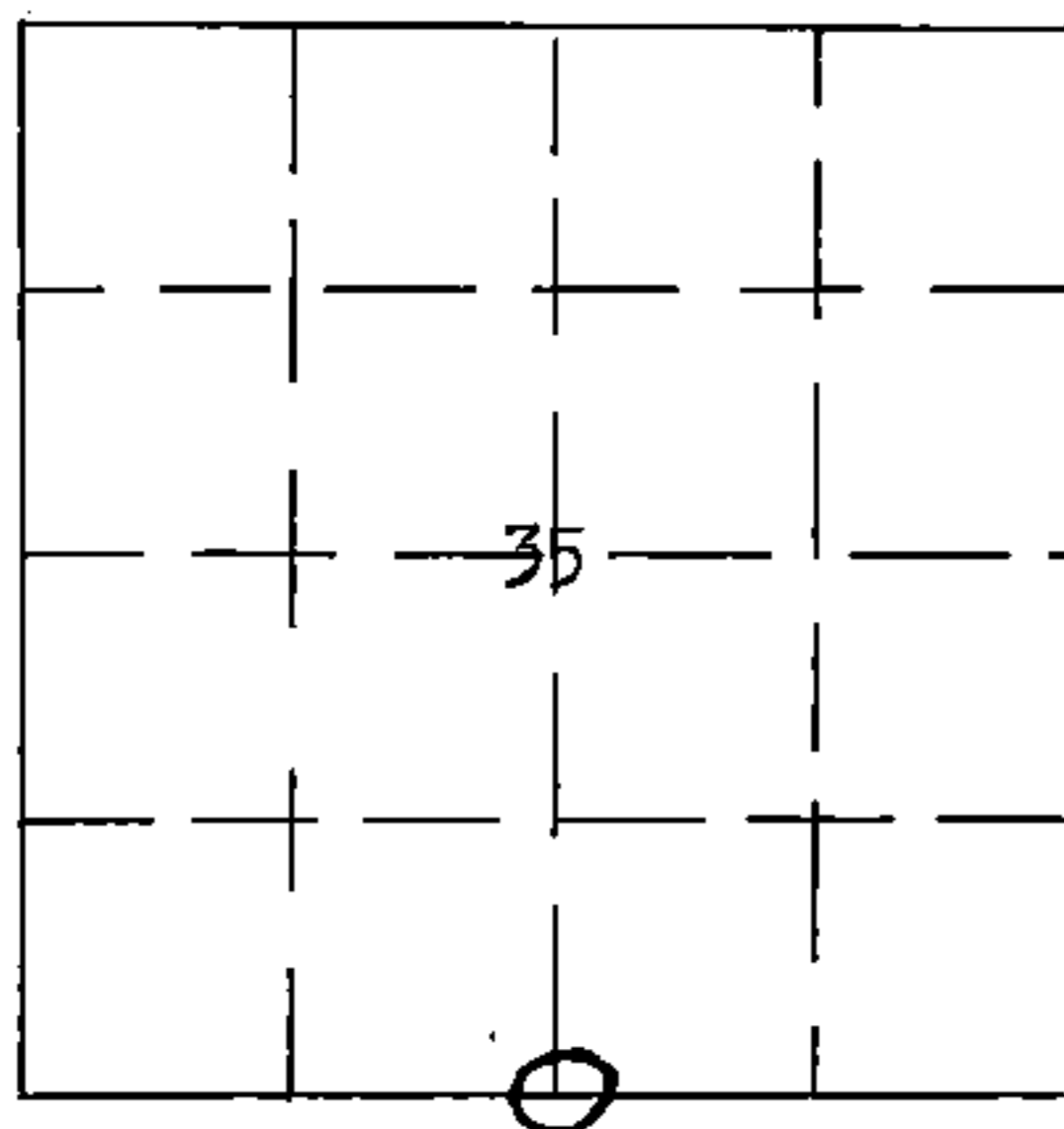
87000

STATE OF WISCONSIN

I NEAL SPERHAKE, do hereby certify that on the ELEVENTH day of DECEMBER, 1962, I restored the SOUTH QUARTER SECTION CORNER of SECTION 35, TOWNSHIP 34 NORTH, RANGE 13 EAST, Fourth Principal Meridian, as described hereon.

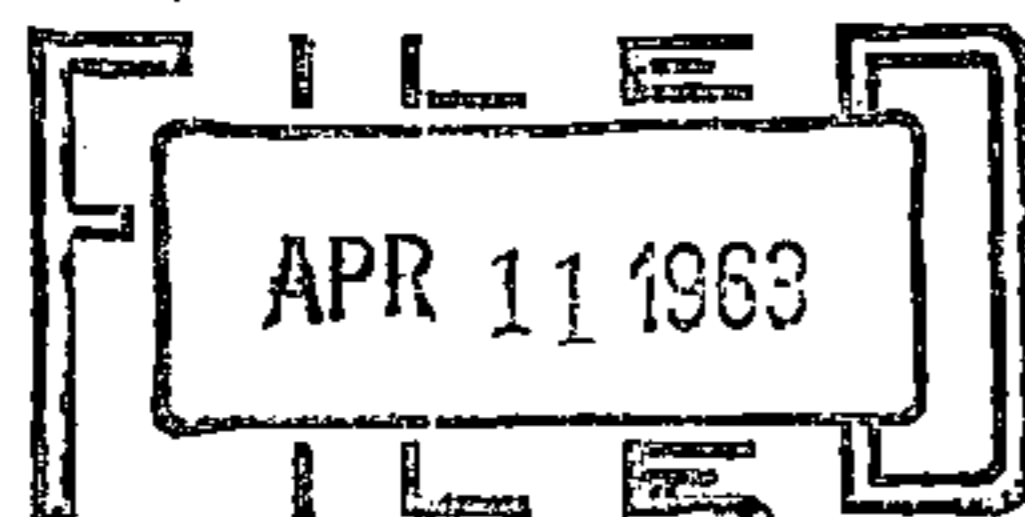
Resident Witnesses:

Richard Piontek - Waubesa



0 = Corner monument restored

REGISTER'S OFFICE
FOREST COUNTY, WIS.



At 2 o'clock P
Carl G. Unger Register of Deeds

RESTORATION OF LOST ORIGINAL GOVERNMENT SURVEY CORNER

Index No. Z-19
219

This corner can also be described as: THE QUARTER SECTION CORNER BETWEEN SECTIONS 2, T33N-R13E, AND, 35, T34N-R13E, 4TH P.M.

History of original corner establishment:

This corner was established during the original survey of this township, as noted in the Original Field Notes for the Original Survey of T34N-R13E, 4th p.m.

Description of monument and accessories I established to perpetuate the location of this corner:

At the point determined for the location of the corner I emplaced a:

"GALVANIZED IRON PIPE, THREE FEET LONG, ONE INCH IN DIAMETER, WITH AN ALUMINUM CAP DENOTED AS, 'KIMBERLY-CLARK CORP T33-34N 1/4 BTWN 2 & 35 R13E SPERHAKE RLS 463 12-11-62".

The pipe is witnessed by:

Basswood 10 N16°W 37 links. (Scribed S35 NBT).

Basswood 5 S35°W 42 links. (Scribed S 2 NBT).

Description as to how corner was located:

No evidence of original corner present. Thus, set by proportionate measurement between the previously established section corners one half mile east and west, respectively. Distance between the corners is 80.06 chains. Therefore, set the 1/4 corner 40.03 chains from either section corner, on a straight line between them.

Dated at Crandon Wis., the 11th day of April, 1963

Signature Neal Sperhake, Title Registered Land Surveyor Registration No. S-463

~~Office of Registrar of Deeds~~, County of Forest, I hereby certify that the within signed and sworn to instrument was ~~filed in the office of the~~ on the 11th day of April, 1963

at o'clock M.

Adeline De Noble
Notary ~~(XXXXXXXXXX Deeds)~~ Public
Forest County, Wisconsin
For My commission expires

My Commission Expires
February 6, 1966

Surveyor's Seal

43413350020