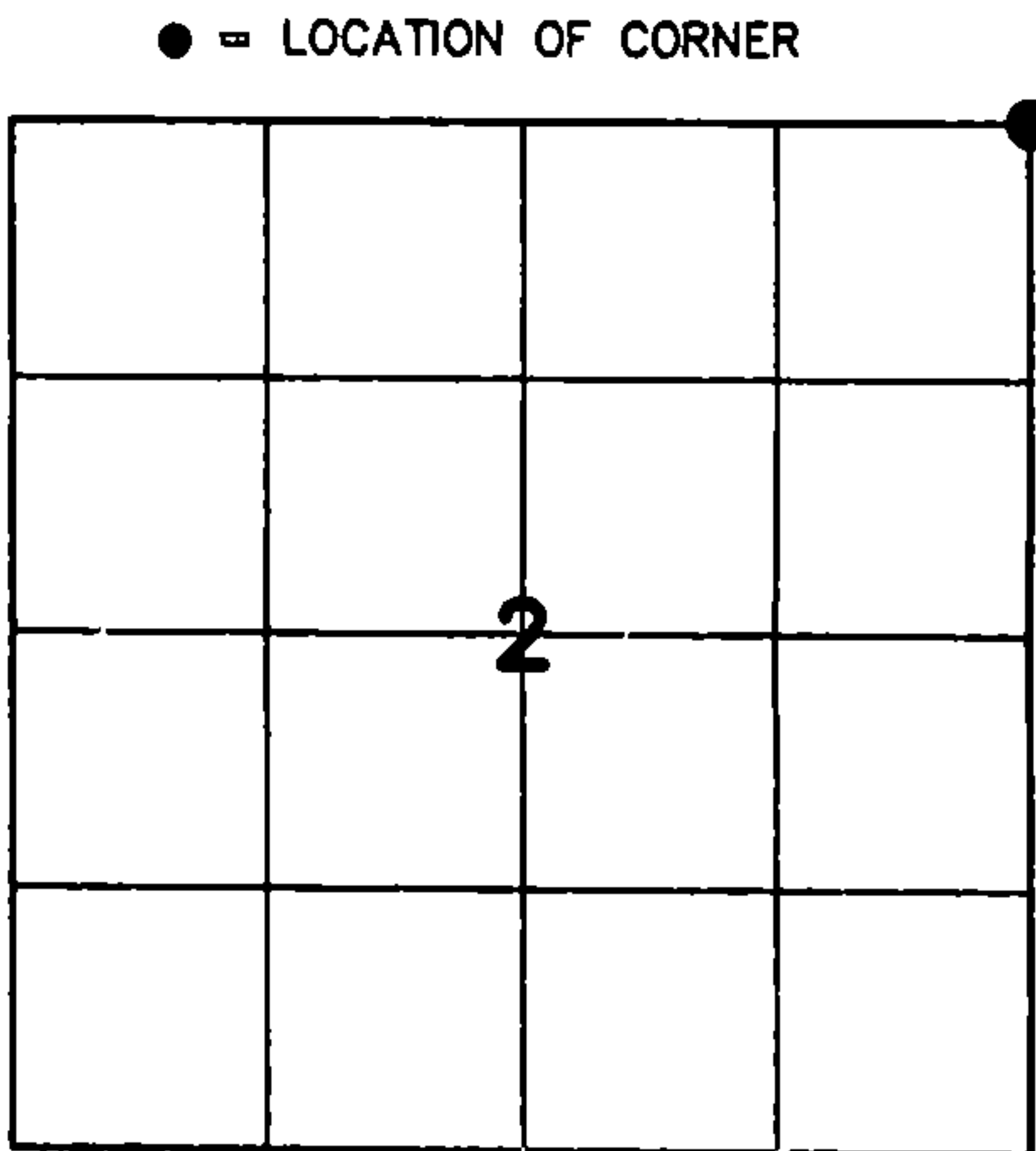


U.S. PUBLIC LAND SURVEY MONUMENT RECORD

HISTORY OF ORIGINAL CORNER ESTABLISHMENT AND SUBSEQUENT RESTORATION AND DESCRIPTION OF ANY RECORD, MONUMENT OCCUPATIONAL, TESTIMONIAL OR OTHER EVIDENCE CONSIDERED:

THE ORIGINAL CORNER WAS SET BY ALFRED MILLARD WITH THE ORIGINAL BEARING TREES OF:  
HEMLOCK 12" N3°E 52 LINKS  
HEMLOCK 12" N42°W 48 LINKS  
HEMLOCK 12" S52°E 48 LINKS  
HEMLOCK 14" S70°W 56 LINKS  
1962-SPERHAK SET 1.25" PIPE WITH 4" CAP  
1969-HALLISY FOUND THE PIPE AND TIED A BEARING TREE  
10" POPPLE N62°W 32.5 FEET  
2016-I FOUND THE 1.25" PIPE WITH 4" ALUMINUM CAP AND SET TIES AS SHOWN



SECTION 2  
TOWNSHIP 33 NORTH, RANGE 13 EAST  
TOWN OF LANGLADE  
LANGLADE COUNTY, WISCONSIN

CORNER WAS: (CHECK ALL THAT APPLY)

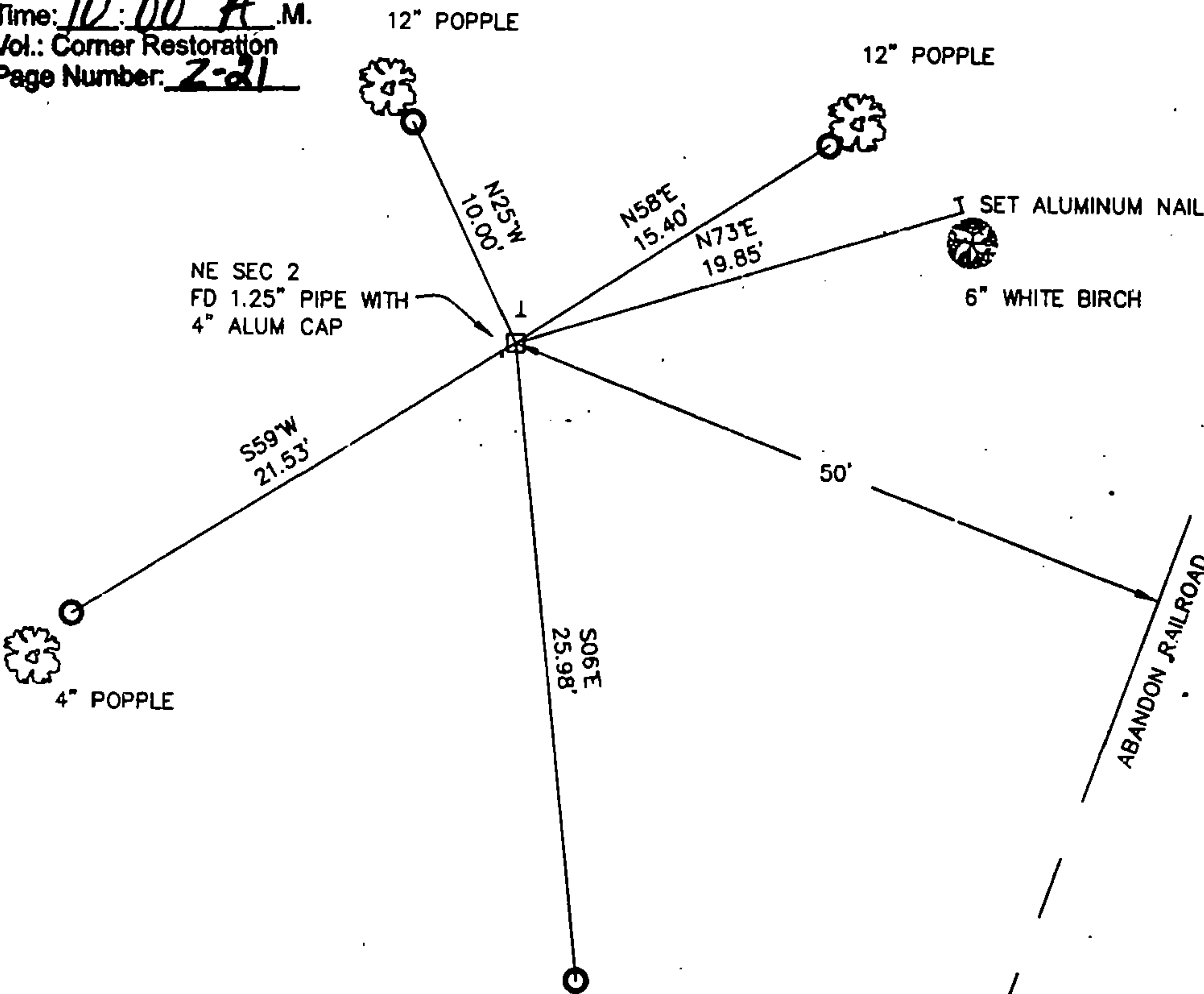
- ☐ RESTORED THROUGH ACCEPTANCE OF AN OBLITERATED EVIDENCE LOCATION
- ☒ RESTORED THROUGH ACCEPTANCE OF A FOUND PERPETUATED LOCATION
- ☐ CONSIDERED A LOST CORNER AND REESTABLISHED THROUGH LOST CORNER PROPORTIONATE METHODS (INCLUDE A PLAN VIEW DRAWING SHOWING DISTANCES AND DIRECTIONS TO OTHER PUBLIC LAND SURVEY CORNERS USED FOR PROPORTIONING AND DETERMINING THE CORNER LOCATION)
- ☐ RESTORED OR REESTABLISHED IN A LOCATION THAT DIFFERS FROM A PREVIOUS RESTORATION OR RE-ESTABLISHMENT (INCLUDE A PLAN VIEW DRAWING AND INDICATE WHAT WAS SET AND/OR FOUND)
- ☐ CHECK IF THERE IS ADDITIONAL INFORMATION ON BACK

DESCRIBE THE MONUMENT AND ACCESSORIES USED TO PERPETUATE THE LOCATION OF THE CORNER. (INCLUDE A PLAN VIEW DRAWING AND INDICATE WHAT WAS SET AND/OR FOUND) ALSO INCLUDE FOUR TIES TO THE SECTION CORNER AND DESCRIPTION OF THE TIES.

FOREST COUNTY, WI  
CORTNEY BRITTEN CLEEREMAN  
REGISTER OF DEEDS  
RECEIVED FOR RECORD

APR 27 2018

Time: 10:00 A.M.  
Vol.: Corner Restoration  
Page Number: 2-21



- SET 3/4"X 30" IRON REBAR AT ALL TIE LOCATIONS
- BEARINGS REFERENCED TO MAGNETIC
- T - WHITE VINYL POST SET
- TREES SHOWN HAVE BEARING TREE SIGNS NAILED TO FACE

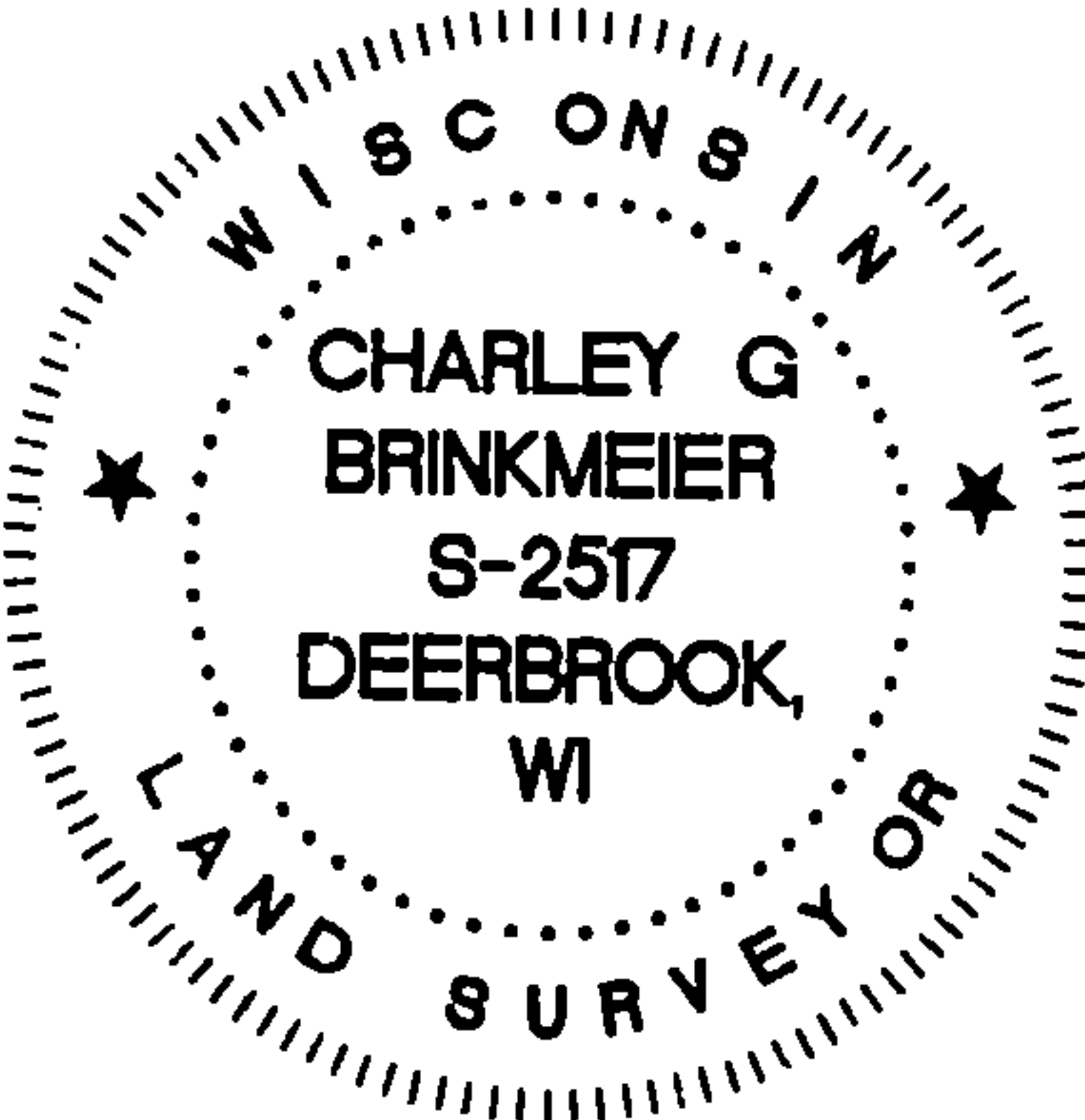
LCCS: N 427159.97  
E 705029.43  
FCCS: N 500554.06  
E 856232.16

CHARLEY G. BRINKMEIER

(type or print name) CERTIFY THAT THE CORNER LOCATION SHOWN ON THIS RECORD WAS DETERMINED BY ME OR UNDER MY DIRECTION AND CONTROL AND THAT THIS U.S. PUBLIC LAND SURVEY MONUMENT RECORD IS CORRECT AND COMPLETE TO THE BEST OF MY KNOWLEDGE AND BELIEF.

SIGNATURE: Charley G. Brinkmeier

DATE: 1-17-17



INDEX NO.

43413350000

# RESTORATION OF LOST ORIGINAL GOVERNMENT SURVEY CORNER

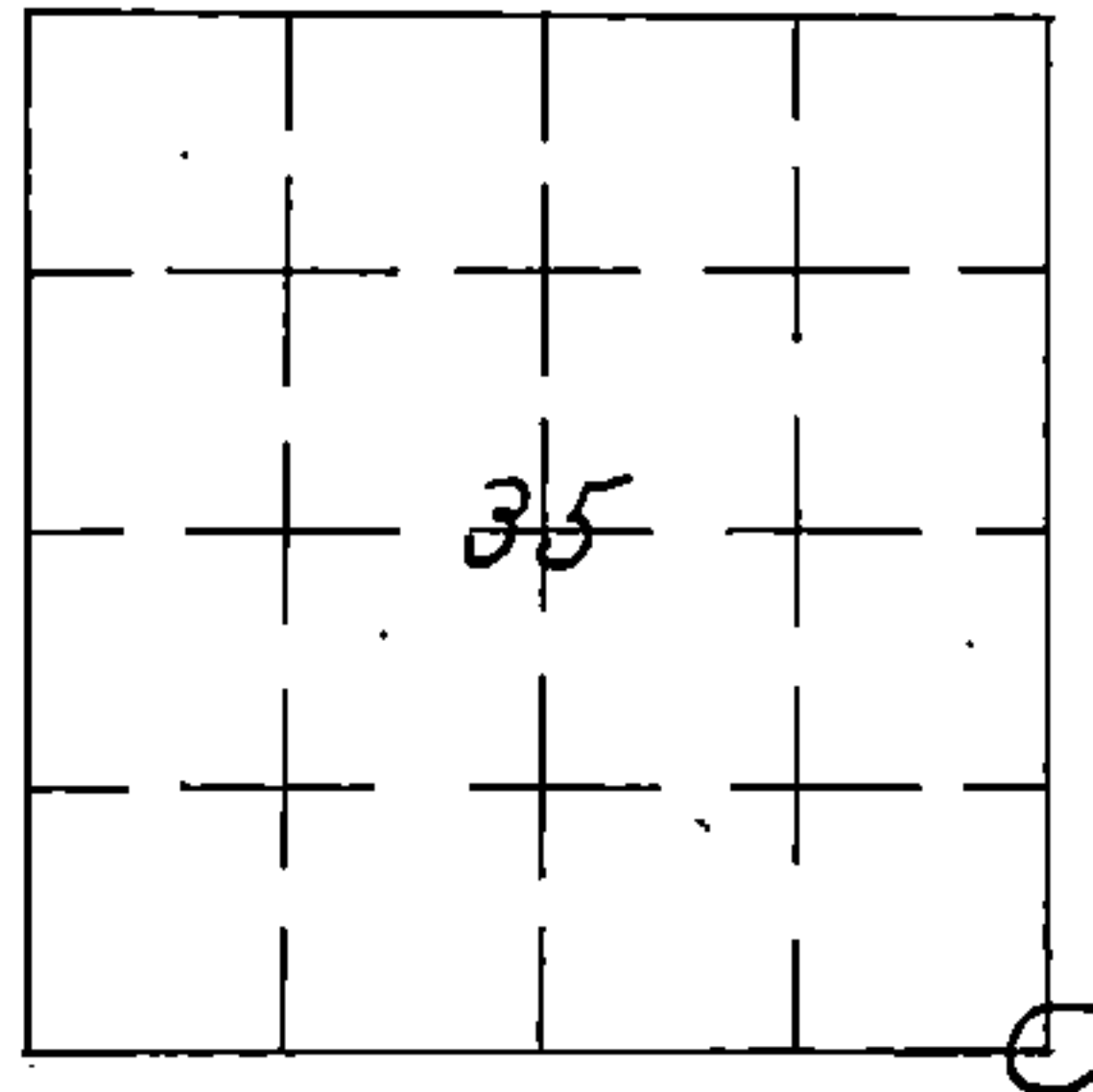
Index No. Z-21  
**Z21**

STATE OF WISCONSIN

I NEAL SPERHAKE, do hereby certify that on the ELEVENTH day of DECEMBER, 1962, I restored the SOUTHEAST SECTION CORNER of SECTION 35, TOWNSHIP 34 NORTH, RANGE 13 EAST, Fourth Principal Meridian, as described hereon.

Resident Witnesses:

Richard Piontek - Waubesa.



O = Corner monument restored

## History of original corner establishment:

This corner can also be described as: THE SECTION CORNER COMMON TO SECTIONS 1 AND 2, T33N-R13E, AND, 35 AND 36, T34N-R13E, 4TH P.M.

This corner was established during the original survey of this township, as noted in the Original Field Notes for the Original Survey of T34N-R13E, 4th p.m.

## Description of monument and accessories I established to perpetuate the location of this corner.

At the point determined for the location of the corner I emplaced a:

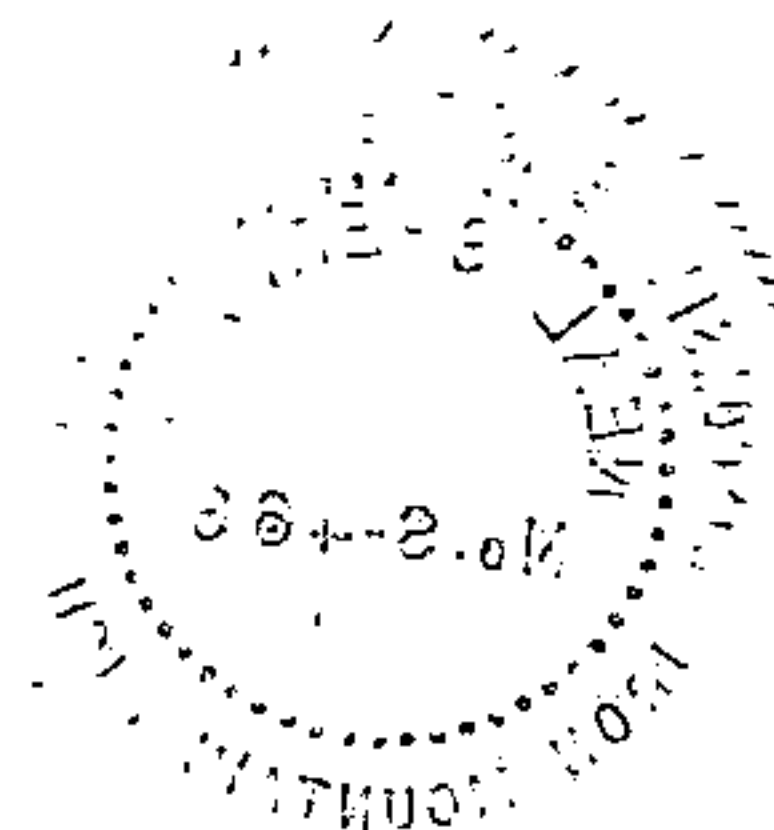
"GALVANIZED IRON PIPE, THREE FEET LONG, ONE INCH IN DIAMETER, WITH AN ALUMINUM CAP DENOTED AS, 'KIMBERLY-CLARK CORP T33-34N 35, 36, 1, 2; R13E SPERHAKE RLS 463 12-11-62'".

The pipe is witnessed by:

B. Cherry 8 S61°W 115 links. (Scribed S 2 NBT).  
 Aspen 8 N66°W 49½ links. (Scribed S35 NBT).

## Description as to how corner was located:

The township corner of T33N-R13E, T33N-R14E, T34N-R13E and T34N-R14E, (or, the corner of sections 1, 6, 36, 31) has been previously established. The quarter section corner between sections 3, T33N-R13E, and, 34, T34N-R13E, has been previously established. The distance between them is 200.18 chains. By pro-ration, the corner common to 1, 2, 35, 36, should be 80.08 chains west of the corner common to the four towns. At exactly 80.08 chains west of the town corner was located a ½ inch iron pipe which has been accepted for at least thirty years by the people living in the vicinity, in the settlement known as Choate, as the corner common to 1, 2, 35, 36. All of the descriptions in the vicinity have been tied in to this pipe. Though located at the correct chainage, the pipe does lie 49 links south of a straight line between the two previously established corners noted above. However, since the location of the pipe has been unquestioned for such a long period of years, I feel that it must be at the site of the original corner. Thus, I have accepted the pipe as marking the site of the corner common to 1, 2, 35, 36, and have replaced and witnessed it as noted.



43413350000

Dated at Crandon, Wis., this 11th day of April, 19 63

Signature [Signature] Title Registered Land Surveyor Registration No. S-463

~~Office of Registrar of Deeds, County of~~ Forest, I hereby certify that the within

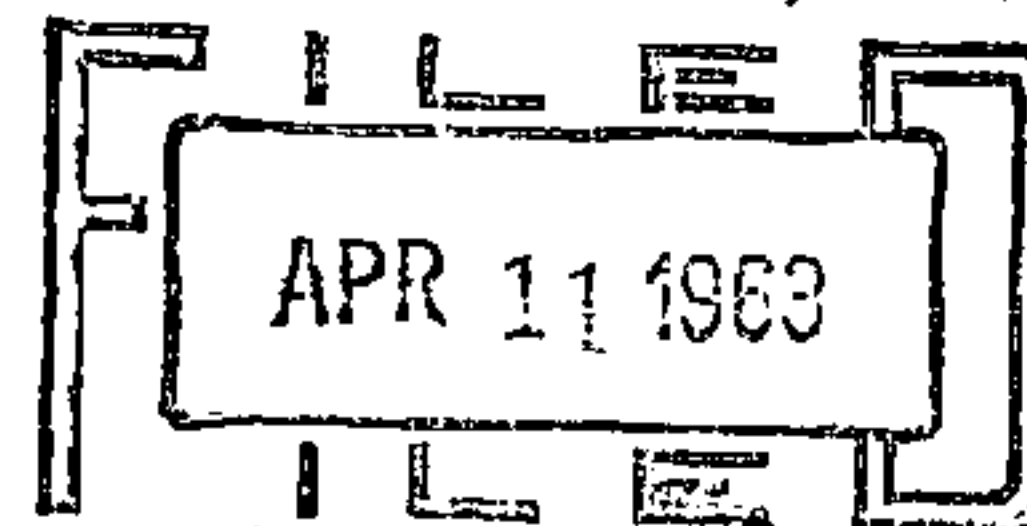
instrument was ~~signed and sworn to~~ signed, and sworn to on the 11th day of April 19 63

~~at~~ ~~at~~ ~~at~~

Adeline De Noble  
Notary ~~Public (Registrar of Deeds)~~ Public  
Forest County, Wisconsin  
~~My commission expires~~ My Commission Expires ~~February 6, 1966~~  
February 6, 1966

87002

REGISTER'S OFFICE  
FOREST COUNTY, WIS.



At 2 o'clock P.M.  
Karl A. Langer Register of Deeds

Surveyors Seal