

CERTIFIED LAND CORNER RESTORATION

Index No. **X-14**

State of Wisconsin }
County of Forest } ss.

History of original corner establishment:

I Glen Barker, do hereby certify that on the 28th day of December, 1982, I ~~found~~ ~~established~~ ~~corners of the~~ WC 1/16 corner of section 34 Township 34, North, Range 13 East, Fourth Principal Meridian, as described hereon; and that from this evidence I established a new monument and accessories as described hereon to perpetuate the original location of this corner.

No evidence of any previous corner.

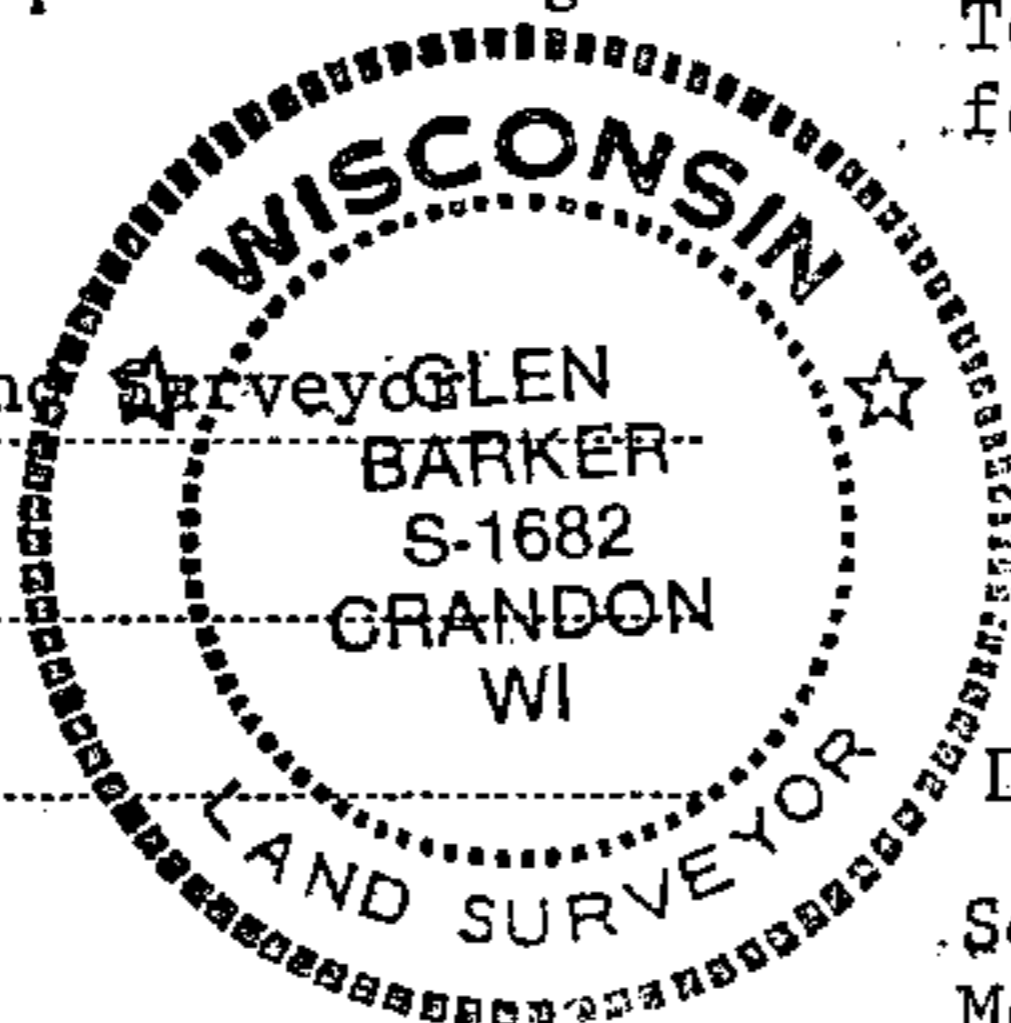
Description of corner evidence found:

Total distance from 1/4 corner between sections 33-34 to C 1/4 section 34 is 2631.80 feet at bearing N88-27-47E. Set WC 1/16 1315.90 feet intermediate.

Resident witnesses:

Jim Claflin, Reg. Land

H. Wagoner

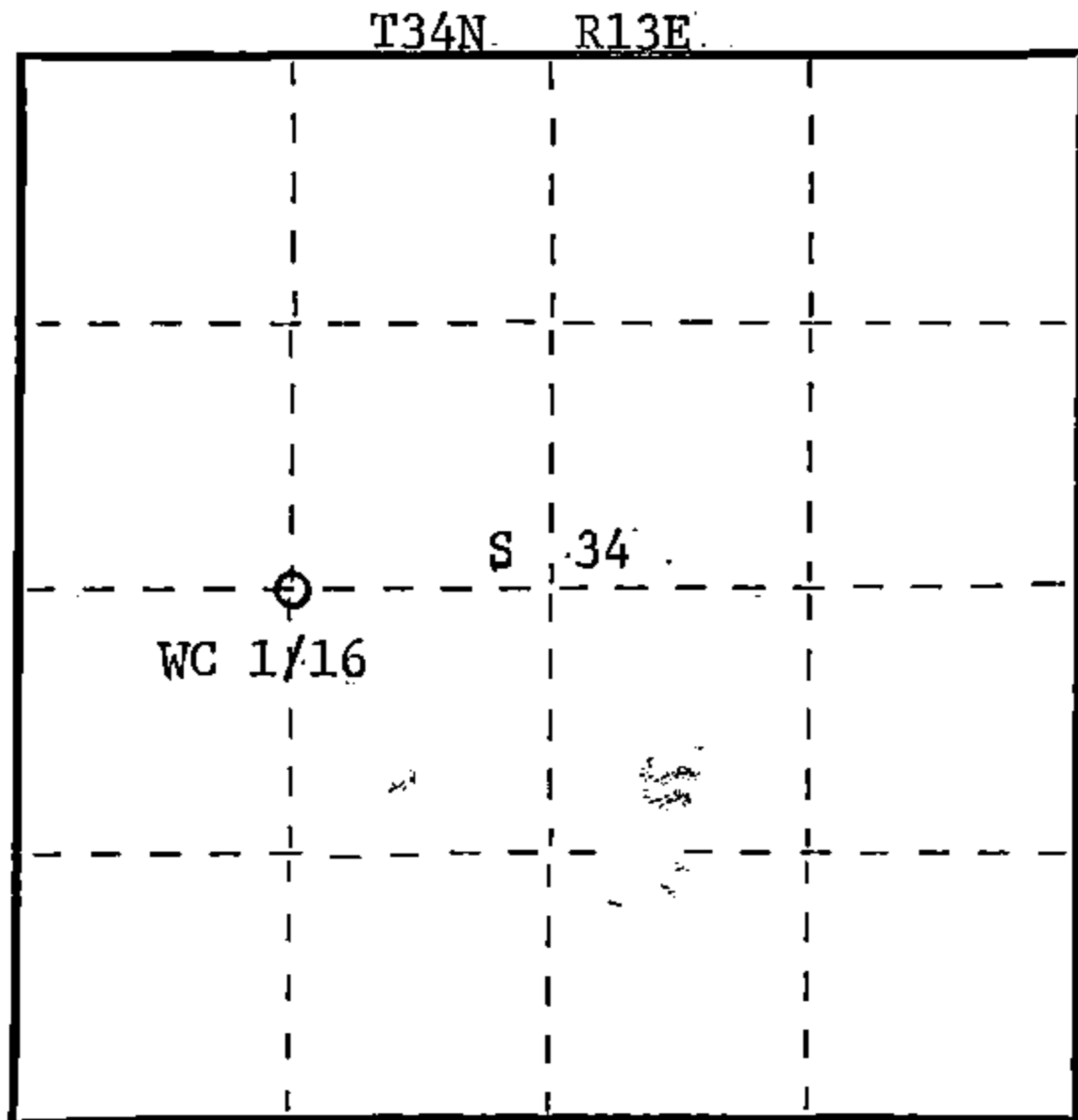


Description of monument and accessories I established to perpetuate the original location of this corner.

Set a 1" iron pipe with 2" diameter alloy cap stamped: Monument projects 12" above ground. Marked NBT

Tamarack S55E 10.95 feet
Cedar 6" N23W 32.66 feet
scribed 1/16 - B.T.

S1682
T34N R13E
WC 1/16 S+34
CPI - 1982



○ = Corner monument restored.

Dated at Rhineland, Wis., this 19th day of April, 1983.

Signature Glen Barker Title Registered Land Surveyor Registration No. S-1682
(County Surveyor, Registered Land Surveyor, or other duly authorized official)

Office of Register of Deeds, County of Forest, I hereby certify that the within instrument was filed in this office for record on the 19th day of May, 1983 at 3:00 o'clock P. M.

Eugene Stetson
(Register of Deeds)
By _____ Deputy

DOCUMENT NO.
123422

FORM 985 H.C. Miller Company Stock No. 26272

43413342030