

CERTIFIED LAND CORNER RESTORATION

Index No. 2-19

214

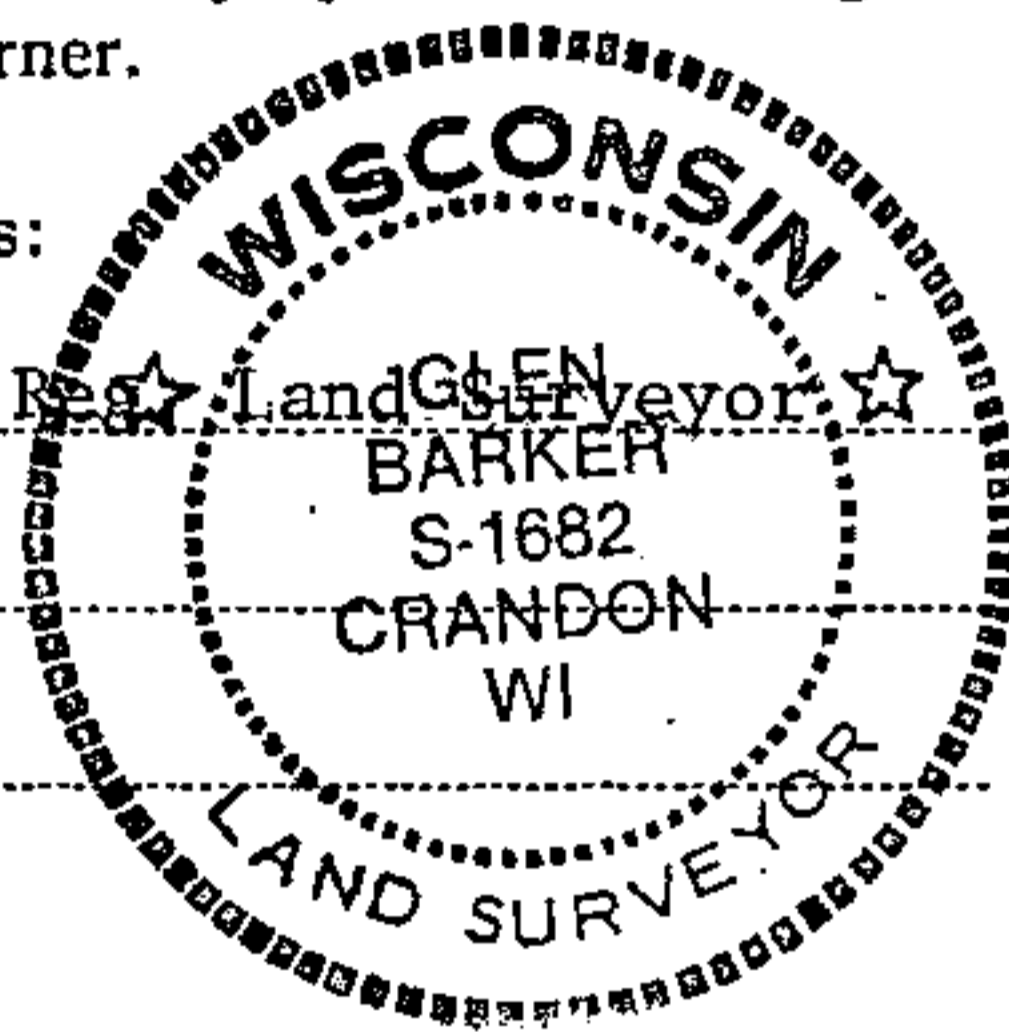
State of Wisconsin }
County of Forest } ss.

I, Glen Barker, do hereby certify that on the 30th day of December, 1982, I found established ~~corner~~ of the W 1/16 corner of Sections 3 & 34 Township 33 & 34, North, Range 13 East, Fourth Principal Meridian, as described hereon; and that from this evidence I established a new monument and accessories as described hereon to perpetuate the original location of this corner.

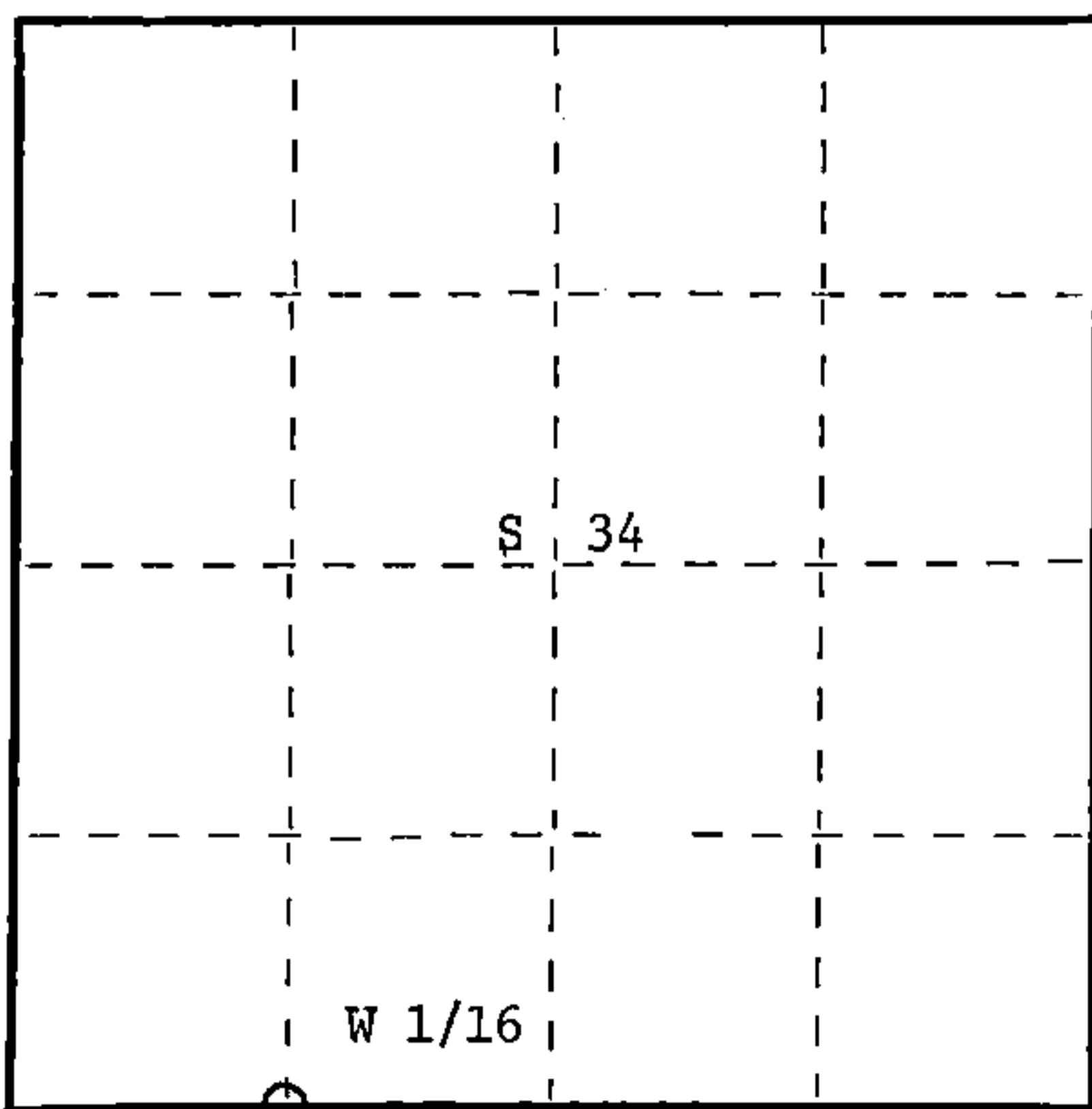
Resident witnesses:

J. Claflin, Reg. Land Surveyor

H. Wagoner



T34N R13E



○ = Corner monument restored.

History of original corner establishment:

No evidence of any previous corner.

Description of corner evidence found:

Total distance from section corner 3-4-33-34 T33 & 34N R13E to 1/4 corner between sections 3 & 34 is 2641.39 feet at bearing N 88-08-42 E.
Set W 1/16 1320.695 feet intermediate.

Description of monument and accessories I established to perpetuate the original location of this corner.

Set a 1" iron pipe with 2" diameter alloy cap - stamped:
Monument projects 12" above ground.

Marked NBT's:

Black Spruce 8" S27W 16.96 feet
Black Spruce 8" S44E 20.25 feet
scribed 1/16 - B.T.

S1682
T34N R13E
W 1/16 S + 34
S + 3
T33N R13E
CPI-1982

Dated at Rhinelander, Wis., this 21st day of March, 1983.

Signature Glen Barker Title Registered Land Surveyor Registration No. S-1682
(County Surveyor, Registered Land Surveyor, or other duly authorized official)

Office of Register of Deeds, County of Forest, I hereby certify that the within instrument was filed in this office for record on the 7th day of April, 1983 at 9:30 o'clock A. M.

Eugene Staszny
(Register of Deeds)

DOCUMENT NO. **123160**

By _____ Deputy

Stock No. 26272

HC Miller Company

FORM 985

43413340030