

225142

U.S. PUBLIC LAND SURVEY MONUMENT RECORD

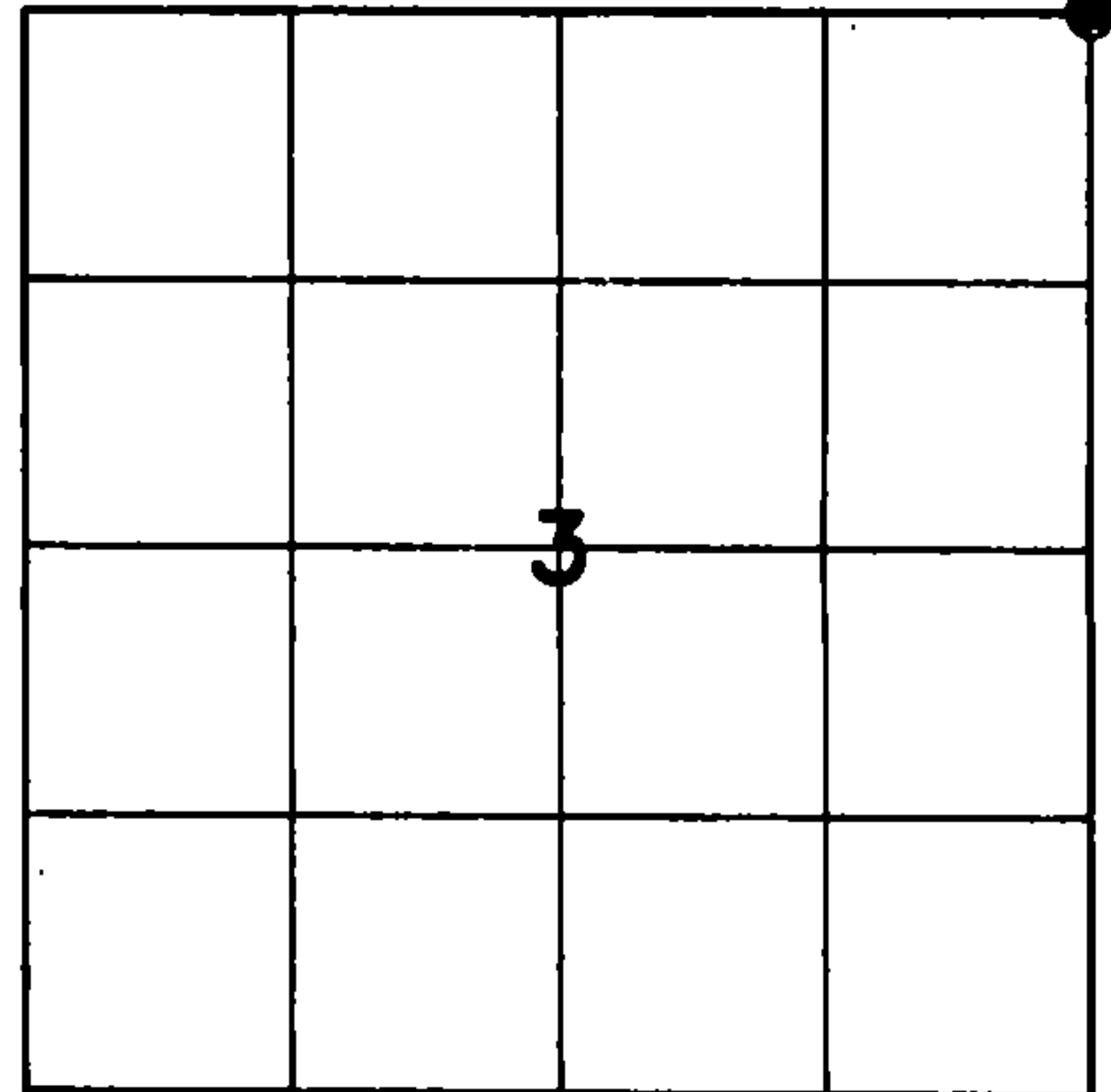
HISTORY OF ORIGINAL CORNER ESTABLISHMENT AND SUBSEQUENT RESTORATION AND DESCRIPTION OF ANY RECORD, MONUMENT OCCUPATIONAL, TESTIMONIAL OR OTHER EVIDENCE CONSIDERED:

THE ORIGINAL CORNER WAS SET BY ALFRED MILLARD WITH THE ORIGINAL BEARING TREES OF:

- HEMLOCK 20" N60°W 28 LINKS
- YEL BIRCH 11" N46°E 29 LINKS
- HEMLOCK 12" S45°W 57 LINKS
- HEMLOCK 12" S30°E 44 LINKS

1962-SPERHAKE SET 1.25" PIPE WITH 4" CAP
 1979-KELLY FOUND THE CAP AND SET ADDITIONAL TIES 10"
 ASPEN N54°W 26.20', 10" ASPEN N31°E 16.00', 12" ASPEN
 S9°E32.70'
 2016-I FOUND THE 1.25" PIPE WITH 4" ALUMINUM CAP AND
 SET TIES AS SHOWN

● = LOCATION OF CORNER



SECTION 3
 TOWNSHIP 33 NORTH, RANGE 13 EAST
 TOWN OF LANGLADE
LANGLADE COUNTY, WISCONSIN

CORNER WAS: (CHECK ALL THAT APPLY)

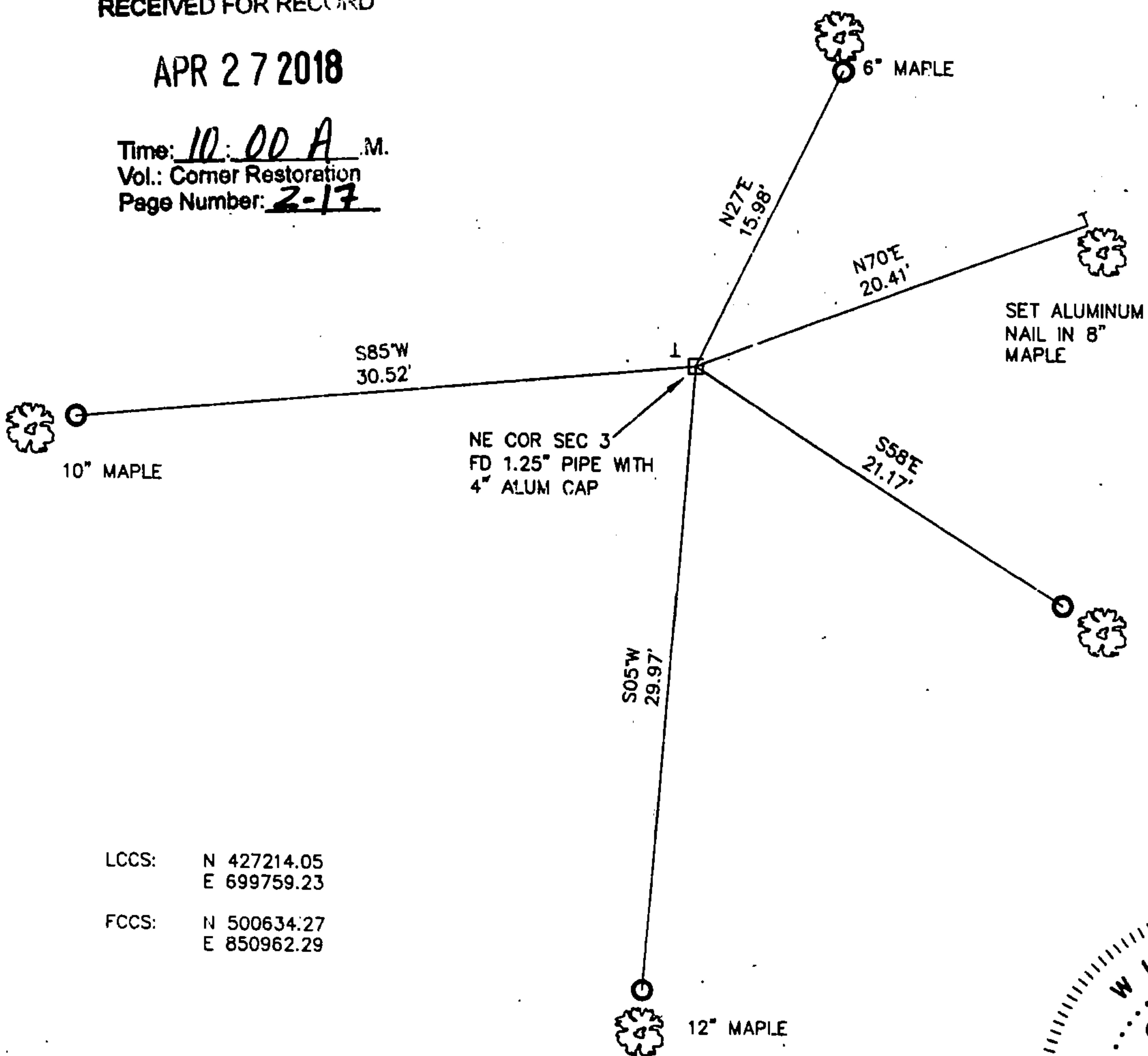
- RESTORED THROUGH ACCEPTANCE OF AN OBLITERATED EVIDENCE LOCATION
- RESTORED THROUGH ACCEPTANCE OF A FOUND PERPETUATED LOCATION
- CONSIDERED A LOST CORNER AND REESTABLISHED THROUGH LOST CORNER PROPORTIONATE METHODS (INCLUDE A PLAN VIEW DRAWING SHOWING DISTANCES AND DIRECTIONS TO OTHER PUBLIC LAND SURVEY CORNERS USED FOR PROPORTIONING AND DETERMINING THE CORNER LOCATION)
- RESTORED OR REESTABLISHED IN A LOCATION THAT DIFFERS FROM A PREVIOUS RESTORATION OR RE-ESTABLISHMENT (INCLUDE A PLAN VIEW DRAWING AND INDICATE WHAT WAS SET AND/OR FOUND)
- CHECK IF THERE IS ADDITIONAL INFORMATION ON BACK

DESCRIBE THE MONUMENT AND ACCESSORIES USED TO PERPETUATE THE LOCATION OF THE CORNER. (INCLUDE A PLAN VIEW DRAWING AND INDICATE WHAT WAS SET AND/OR FOUND) ALSO INCLUDE FOUR TIES TO THE SECTION CORNER AND DESCRIPTION OF THE TIES.

FOREST COUNTY, WI
 CORTNEY BRITTEN CLEEREMAN
 REGISTER OF DEEDS
 RECEIVED FOR RECORD

APR 27 2018

Time: 10:00 A.M.
 Vol.: Corner Restoration
 Page Number: 2-17



○ SET 3/4" X 30" IRON REBAR AT ALL TIE LOCATIONS

BEARINGS REFERENCED TO MAGNETIC

T - WHITE VINYL POST SET

TREES SHOWN HAVE BEARING TREE SIGNS NAILED TO FACE

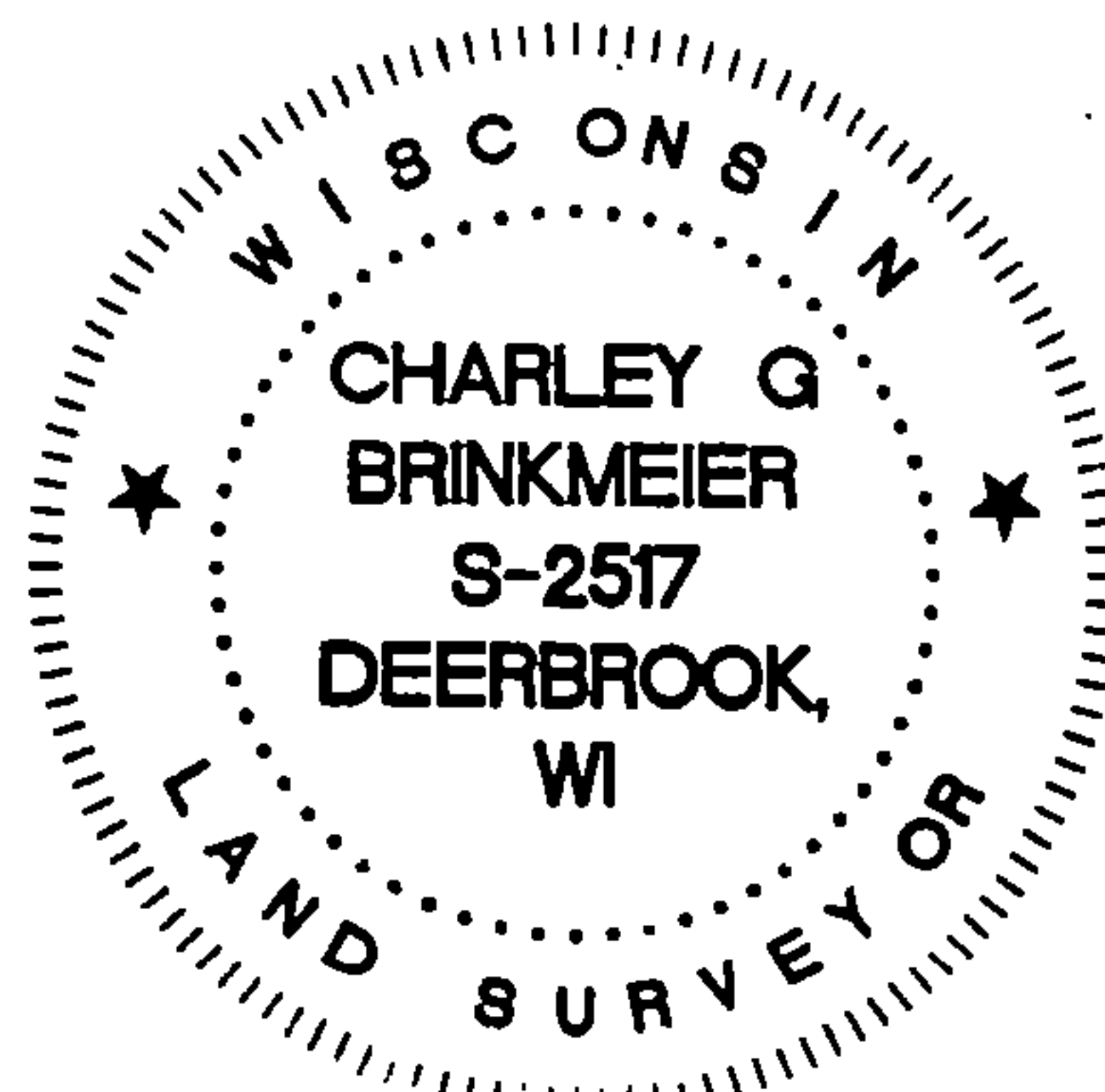
LCCS: N 427214.05
 E 699759.23
 FCCS: N 500634.27
 E 850962.29

CHARLEY G. BRINKMEIER

(type or print name) CERTIFY THAT THE CORNER LOCATION SHOWN ON THIS RECORD WAS DETERMINED BY ME OR UNDER MY DIRECTION AND CONTROL AND THAT THIS U.S. PUBLIC LAND SURVEY MONUMENT RECORD IS CORRECT AND COMPLETE TO THE BEST OF MY KNOWLEDGE AND BELIEF.

SIGNATURE *Charley G. Brinkmeier*

DATE 1-17-17



INDEX NO.

4341334 0000

87001

STATE OF WISCONSIN

I NEAL SPERHAKE, do hereby certify that on the NINETEENTH day of NOVEMBER, 1962, I restored the SOUTHWEST SECTION CORNER of SECTION 35, TOWNSHIP 34 NORTH, RANGE 13 EAST, Fourth Principal Meridian, as described hereon.

Resident Witnesses:

Richard Piontek - Waubesa

History of original corner establishment:

This corner can also be described as: THE SECTION CORNER COMMON TO SECTIONS 2 AND 3, T33n-R13E, AND, 34 AND 35, T34N-R13E, 4TH P.M.

This corner was established during the original survey of this township, as noted in the Original Field Notes for the Original Survey of T34N-R13E, 4th p.m.

Description of monument and accessories I established to perpetuate the location of this corner.

At the point determined for the location of the corner I emplaced a:

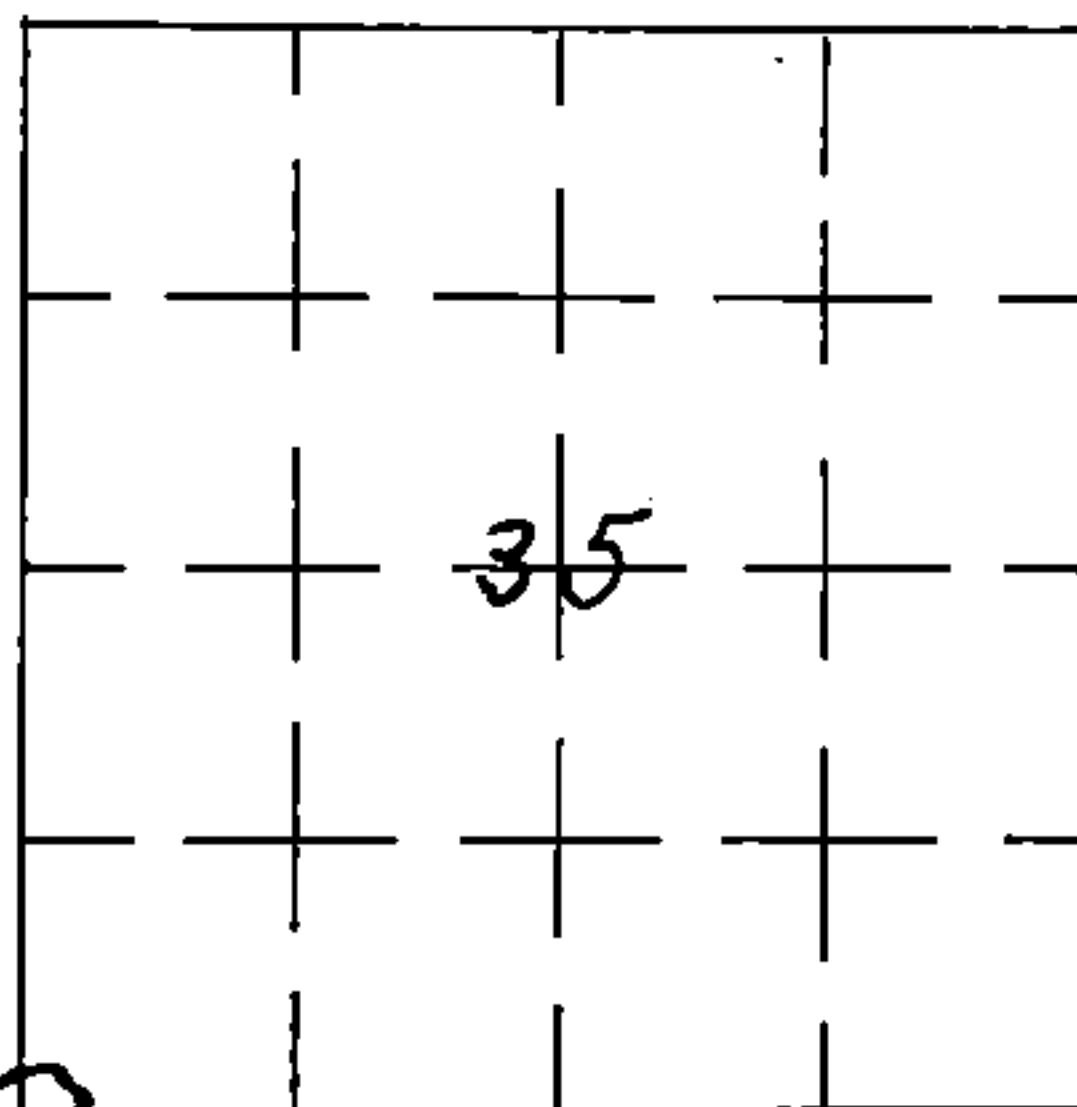
"GALVANIZED IRON PIPE, THREE FEET LONG, ONE INCH IN DIAMETER, WITH AN ALUMINUM CAP DENOTED AS: 'KIMBERLY-CLARK CORP T33-34N 34, 35, 2, 3, R13E SPERHAKE RLS 463 11-19-62".

The pipe is witnessed by:

- Aspen 6 N55°W 45 links. (Scribed S34 NBT).
- Aspen 9 N74°E 54 links. (Scribed S35 NBT).
- Aspen 10 S10°E 50½ links. (Scribed S 2 NBT).
- Aspen 6 S53°W 66½ links. (Scribed S 3 NBT).

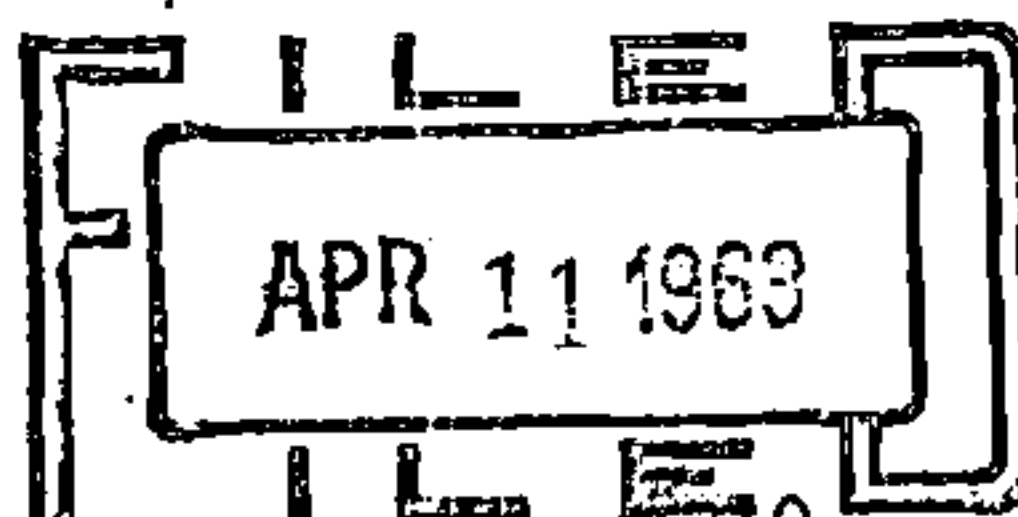
Description as to how corner was located:

No evidence of original corner present. Thus, set corner by proportionate measurement. To the east the corner common to sections 1, 2, 35, 36, has been previously established. To the west, the quarter section corner between 3 and 34 has been established. The distance between them is 120.10 chains. Therefore, I set the corner common to 2, 3, 34, 35, 80.06 chains west of the corner of 1, 2, 35, 36, and 40.04 chains east of the 1/4 corner between 3 and 34, and on a straight line between these known corners.



0 = Corner Monument Restored

REGISTER'S OFFICE
FOREST COUNTY, WIS.



At 2 o'clock P.M.
Neal Sperhake Register of Deeds

Dated at Grandon, Wis., this 11th day of April, 19 63

Signature Neal Sperhake Title Registered Land Surveyor Registration No. S-463

~~Office of Register of Deeds~~, County of Forest, I hereby certify that the within

instrument was ~~signed and sworn to~~ signed and sworn to on the 11th day of April, 19 63

~~at~~ at ~~clock~~ clock ~~M.~~ M.

Adeline De Noble
Notary ~~(Register of Deeds)~~ Public
Forest County, Wisconsin
By My commission expires February 6, 1966 ~~Deputy~~

My Commission Expires
February 6, 1966

Surveyor's Seal

43413340000