

CERTIFIED LAND CORNER RESTORATION

Index No. X-10

State of Wisconsin }
County of Forest } ss.

History of original corner establishment:
No evidence of any previous corner.

X 10

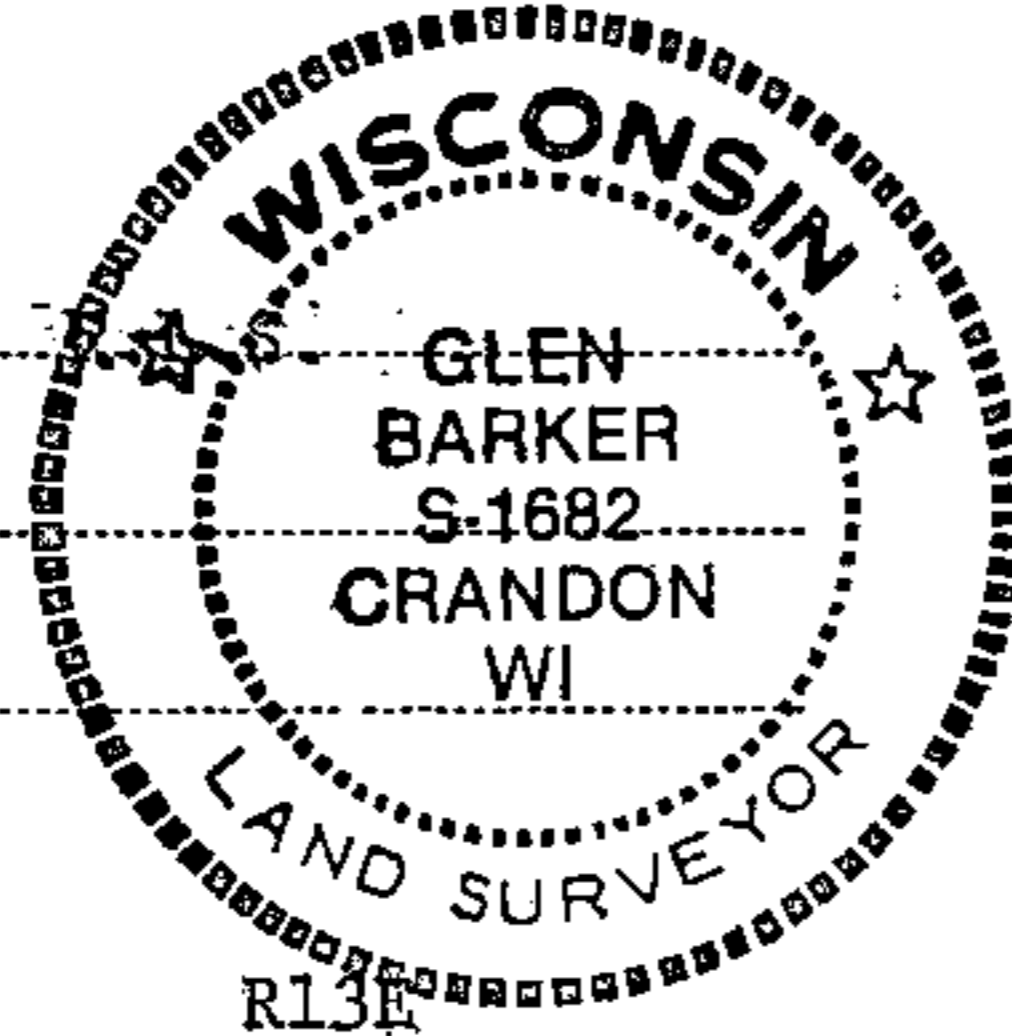
I, Glen Barker, do hereby certify that on the 29th day of April, 1982, I found evidence of the W.C. 1/16 corner of Section 33 Township 34 North, Range 13 East, Fourth Principal Meridian, as described hereon; and that from this evidence I established a new monument and accessories as described hereon to perpetuate the original location of this corner.

Description of corner evidence found:

Total distance from 1/4 corner between sections 32 & 33 to C 1/4 section 33 is 2683.87 ft at bearing N89-55-19E. Set WC 1/16 1341.94 ft. intermediate.

Resident witnesses:

James Claflin
Herb Wagoner



Description of monument and accessories I established to perpetuate the original location of this corner.

Set a 1" iron pipe with 2" diameter alloy cap stamped:
Monument projects 12" above ground.

S1682
T34N R13E

Marked NBTs:

Yellow birch 5" N76E 21.38 ft.
Twin maple 6" S38W 5.75 ft.

WC 1/16 S 33

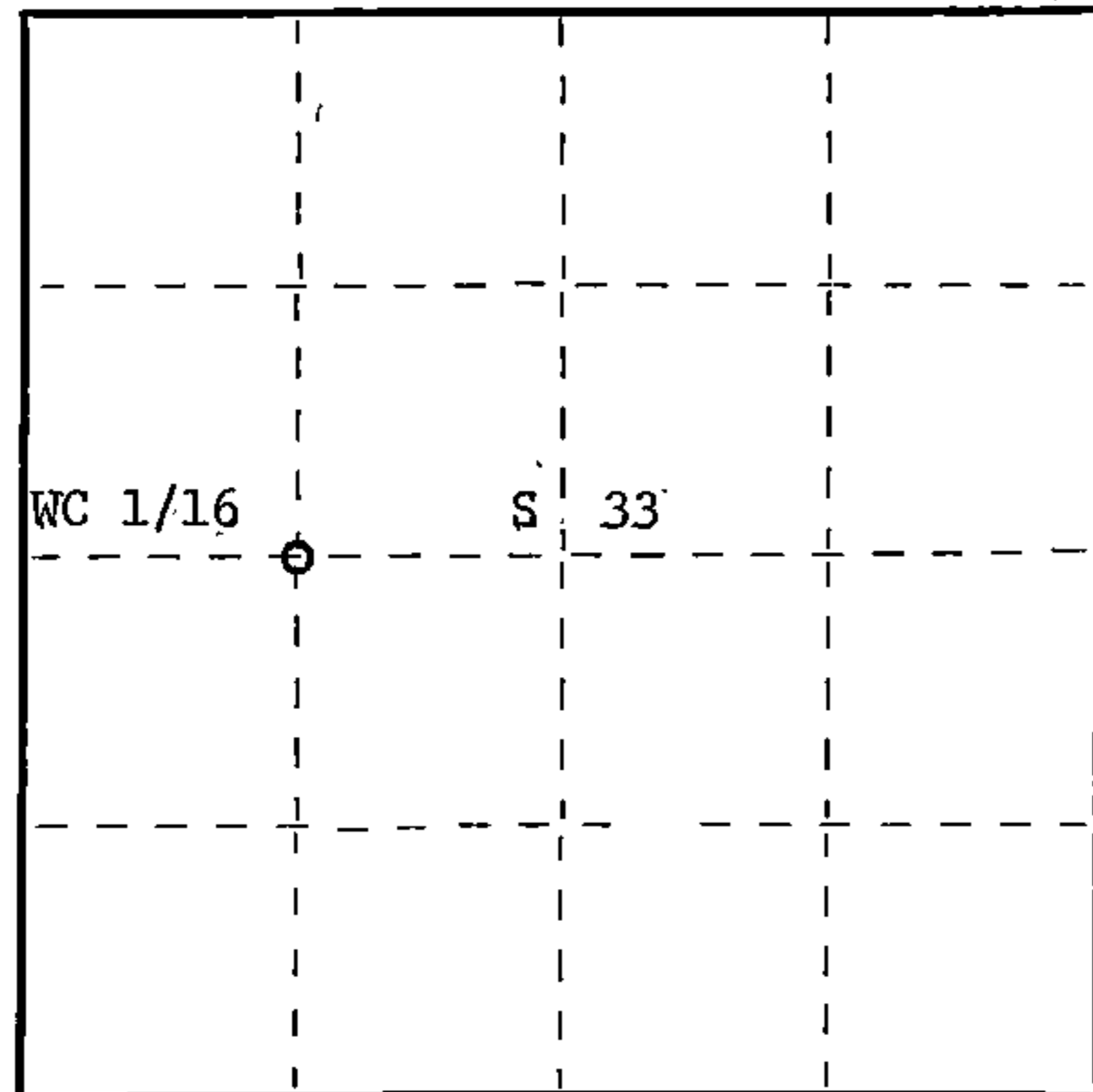
Scribed 1/16 - B.T.

CPI - 1982

FORM 985 M. C. MILLER CO., MILWAUKEE

T34N

R13E



○ = Corner monument restored.

Dated at Rhinelander, Wis., this 18th day of May, 1982.

Signature: *Glen Barker* Title: Registered Land Surveyor Registration No. S-1682
(County Surveyor, Registered Land Surveyor, or other duly authorized official)

Office of Register of Deeds, County of Forest, I hereby certify that the within instrument was filed in this office for record on the 15th day of June, 1982 at 10:00 o'clock A.M.

Eugene Statezny

(Register of Deeds)

DOCUMENT NO. 121686

By: *Sharon Mueller* Deputy

43413332030