

CERTIFIED LAND CORNER RESTORATION

Index No. X-11

State of Wisconsin }
County of Forest } ss.

History of original corner establishment:
No evidence of any previous corner.

X 11

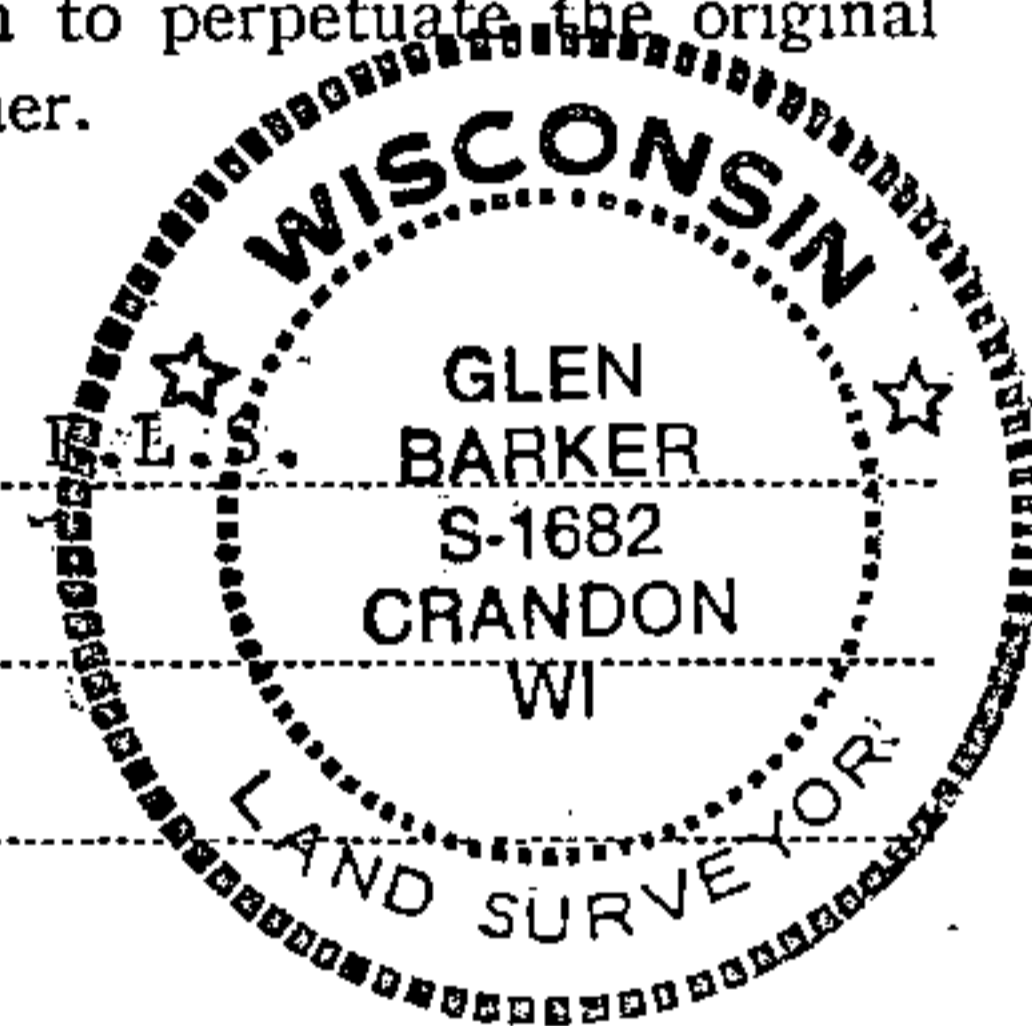
I Glen Barker, do hereby
certify that on the 4th day
of May, 1982, I ~~found~~ est.
~~evidence of the~~ C 1/4
corner of Section 33
Township 34, North, Range
13 East, Fourth Principal Meridian,
as described hereon; and that from this evidence
I established a new monument and accessories
as described hereon to perpetuate the original
location of this corner.

Description of corner evidence found:
Corner established by subdivision of section 33 T34N R13E.
Corner sets S1-30-33W 2690.92 ft. of north 1/4, S89-55-19W 2630.09 ft. of east 1/4
corner, N1-30-33E 2759.57 ft. of south 1/4 corner and N89-55-19E 2683.87 ft. of
west 1/4 corner.

Resident witnesses:

James Claflin

Herb Wagoner



Description of monument and accessories I established to perpetuate the original location of this corner.

Set a 2" iron pipe with brass cap stamped:

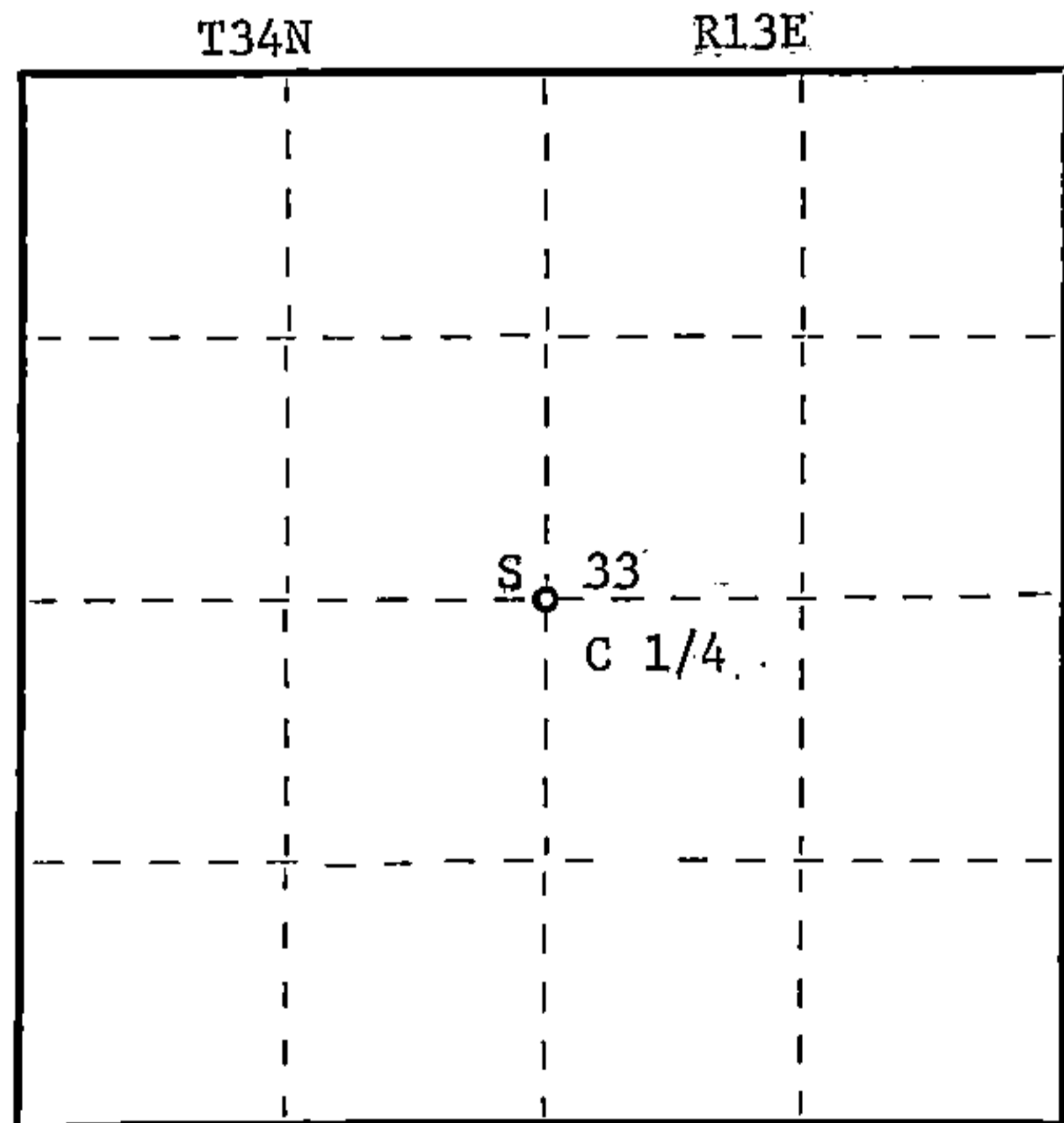
Monument projects 12" above ground.

Marked NBTs:

Sugar 5" S35E 11.35 ft.
Sugar 4" N60W 9.45 ft.
Scribed 1/16 - B.T.

S1682
T34N R13E
C 1/4 S 33
CPI - 1982

FORM 985 H. C. MILLER CO., MILWAUKEE



○ = Corner monument restored.

Dated at Rhinelander, Wis., this 18th day of May, 1982

Signature Glen Barker Title Registered Land Surveyor Registration No. S-1682
(County Surveyor, Registered Land Surveyor, or other duly authorized official)

Office of Register of Deeds, County of Forest, I hereby certify that the within
instrument was filed in this office for record on the 15th day of June, 1982
at 10:00 o'clock A. M.

Eugene Statezny
(Register of Deeds)

By Sharon Mueller Deputy

DOCUMENT NO.
121687

43A13332020