

CERTIFIED LAND CORNER RESTORATION

Index No. Y-10

Y 10

State of Wisconsin }
County of Forest } ss.

History of original corner establishment:

No evidence of any previous corner.

I Glen Barker, do hereby certify that on the 29th day of April, 1982, I ~~found~~ ^{found} evidence of the SW 1/16 corner of Section 33 Township 34, North, Range 13 East, Fourth Principal Meridian, as described hereon; and that from this evidence I established a new monument and accessories as described hereon to perpetuate the original location of this corner.

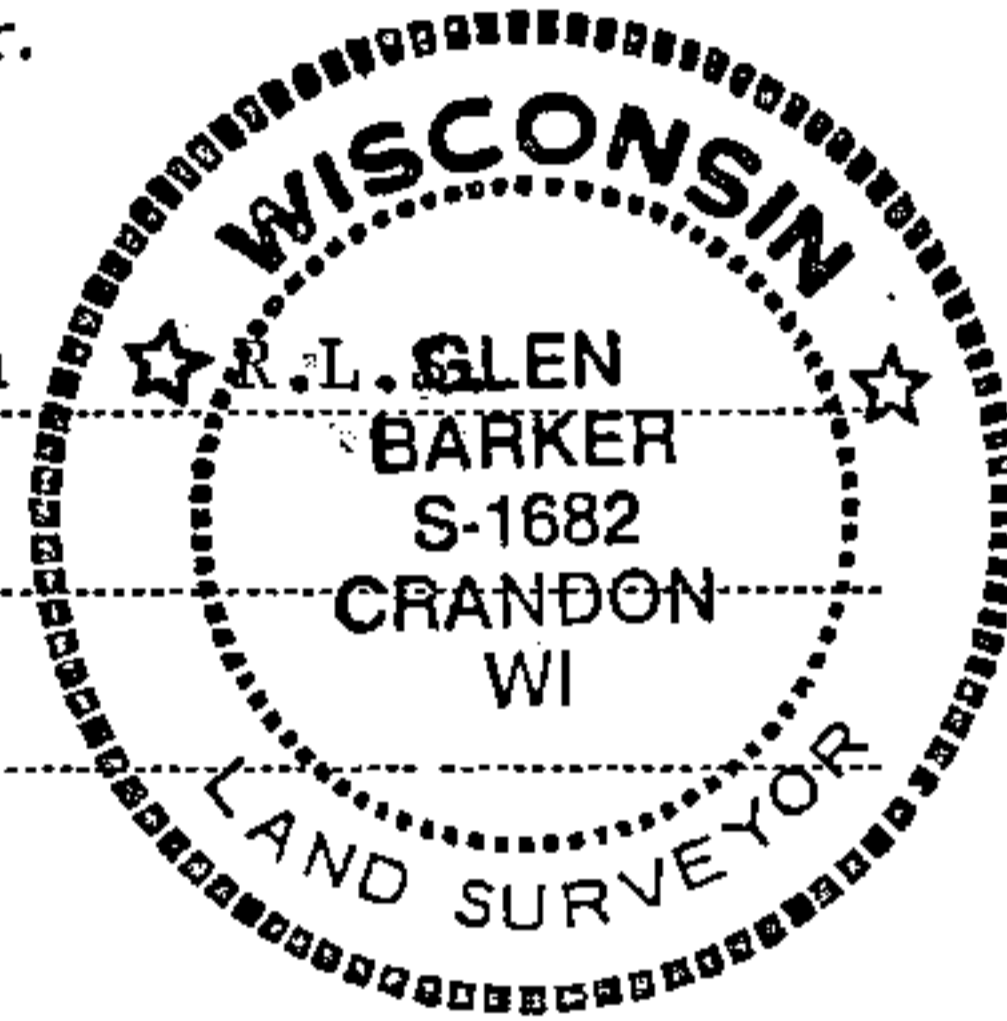
Description of corner evidence found:

Corner established by subdivision of the SW 1/4.
Location of SW 1/16 is N89-59-36W 1329.33 ft. of SC 1/16 and S0-59-13W 1377.54 ft. of WC 1/16.

Resident witnesses:

James D. Claflin

Herb Wagoner



Description of monument and accessories I established to perpetuate the original location of this corner.

Set a 1" iron pipe with 2" diameter alloy cap stamped:

Monument projects 18" above ground.

Marked NBTs:

Yellow birch 6" N42W 5.70 ft.
Sugar 5" N30E 5.88 ft.

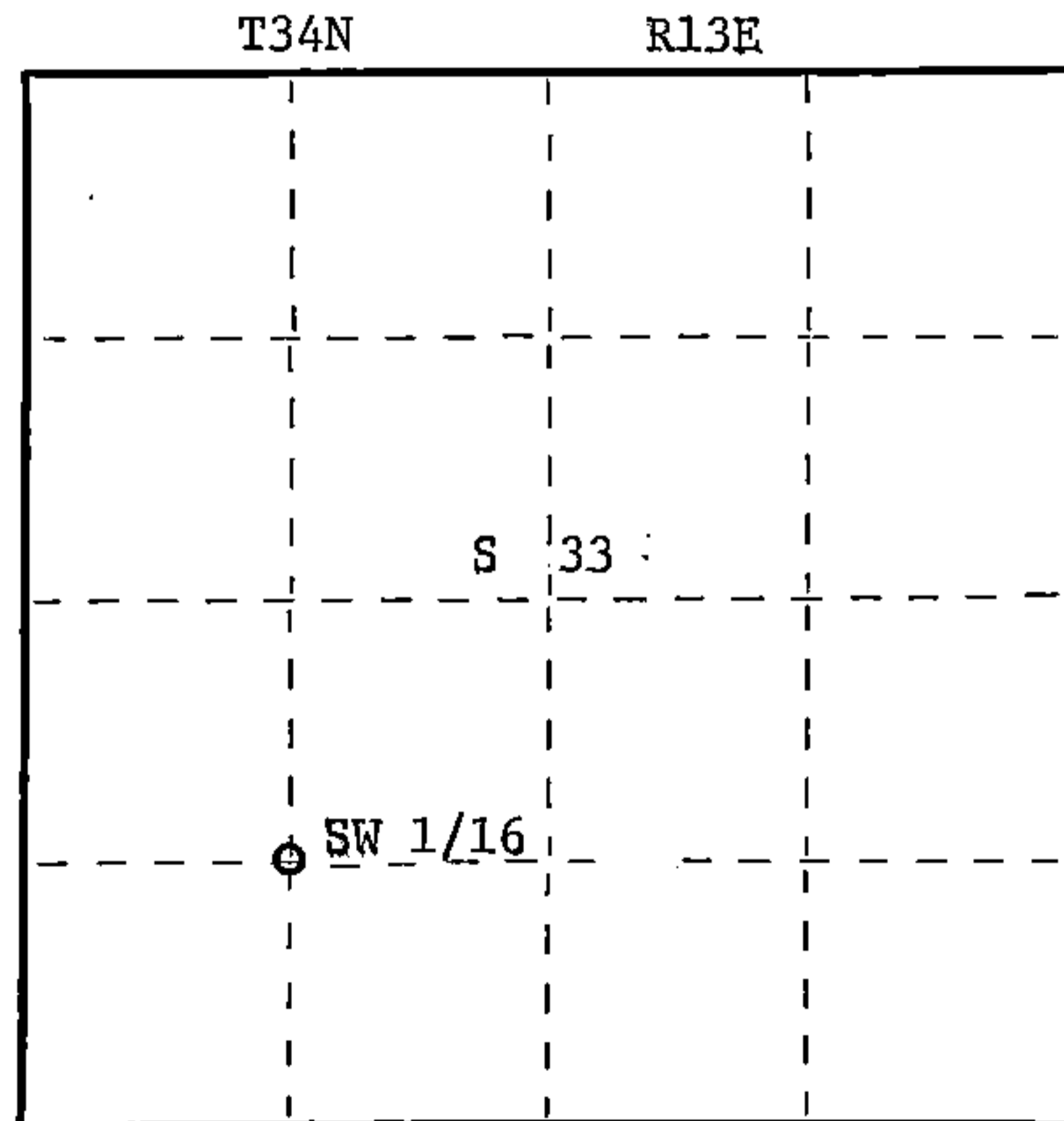
Scribed 1/16 - B.T.

S1682
T34N R13E

S 33

SW 1/16

CPI - 1982



○ = Corner monument restored.

Dated at Rhinelander, Wis., this 18th day of May, 1982.

Signature Glen Barker Title Registered Land Surveyor Registration No. S-1682
(County Surveyor, Registered Land Surveyor, or other duly authorized official)

Office of Register of Deeds, County of Forest, I hereby certify that the within instrument was filed in this office for record on the 15th day of June, 1982 at 10:00 o'clock A. M.

Eugene Staszny

(Register of Deeds)

By Sharon Mueller Deputy

DOCUMENT NO.
121689

FORM 985 H. C. MILLER CO., MILWAUKEE

43413331630