

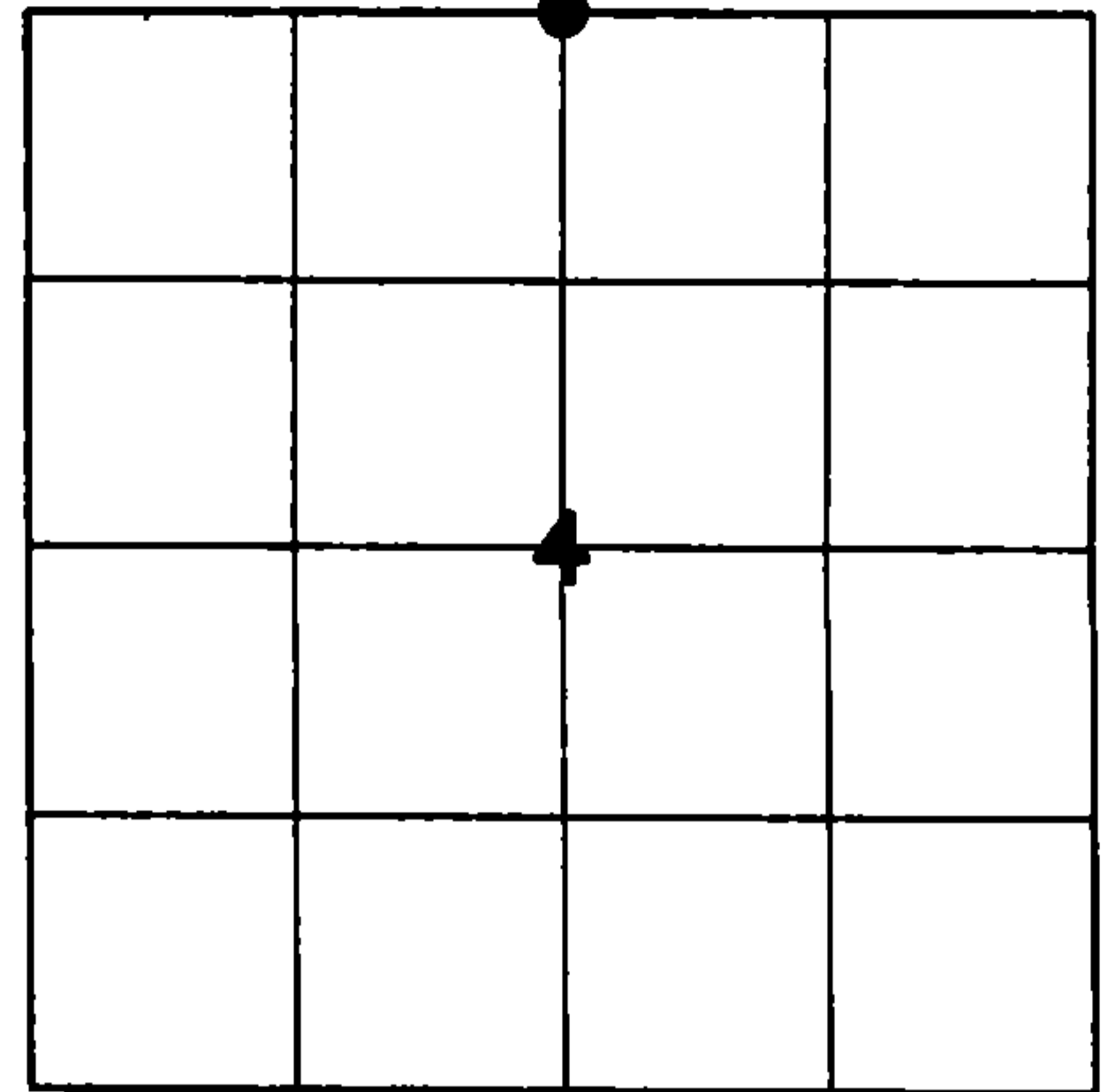
225145

U.S. PUBLIC LAND SURVEY MONUMENT RECORD

HISTORY OF ORIGINAL CORNER ESTABLISHMENT AND SUBSEQUENT RESTORATION AND DESCRIPTION OF ANY RECORD, MONUMENT OCCUPATIONAL, TESTIMONIAL OR OTHER EVIDENCE CONSIDERED:

THE ORIGINAL CORNER WAS SET BY ALFRED MILLARD WITH THE ORIGINAL BEARING TREES OF:
HEMLOCK 12" N45°W 22 LINKS
YEL BIRCH 12" S65°E 25 LINKS
1960-KIMBERLY CLARK SET 1.25" PIPE WITH 4" CAP
2016-I FOUND THE 1.25" PIPE WITH 4" ALUMINUM CAP AND SET TIES AS SHOWN

● = LOCATION OF CORNER

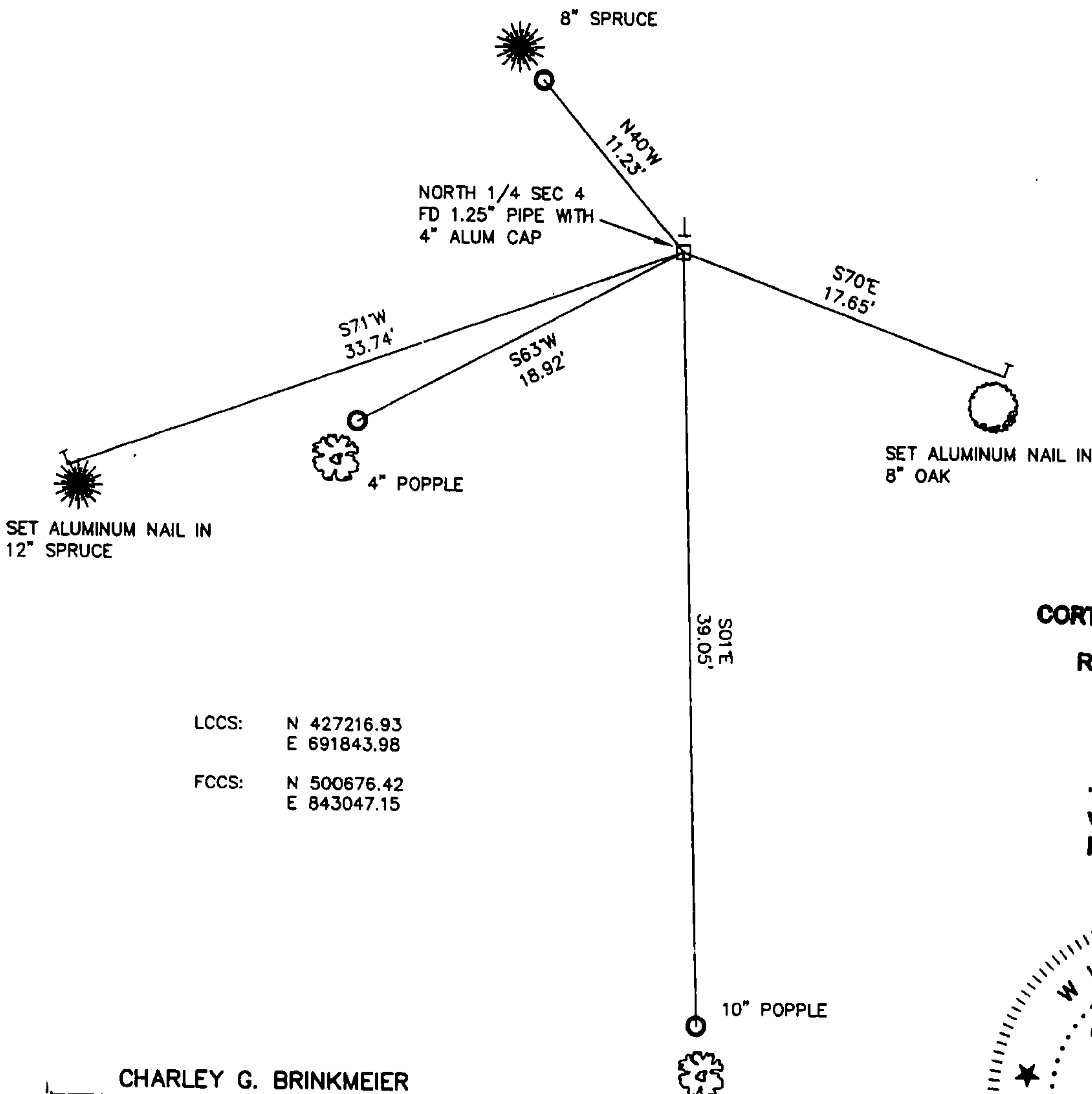


SECTION 4
TOWNSHIP 33 NORTH, RANGE 13 EAST
TOWN OF LANGLADE
LANGLADE COUNTY, WISCONSIN

CORNER WAS: (CHECK ALL THAT APPLY)

- RESTORED THROUGH ACCEPTANCE OF AN OBLITERATED EVIDENCE LOCATION
- RESTORED THROUGH ACCEPTANCE OF A FOUND PERPETUATED LOCATION
- CONSIDERED A LOST CORNER AND REESTABLISHED THROUGH LOST CORNER PROPORTIONATE METHODS (INCLUDE A PLAN VIEW DRAWING SHOWING DISTANCES AND DIRECTIONS TO OTHER PUBLIC LAND SURVEY CORNERS USED FOR PROPORTIONING AND DETERMINING THE CORNER LOCATION)
- RESTORED OR REESTABLISHED IN A LOCATION THAT DIFFERS FROM A PREVIOUS RESTORATION OR RE-ESTABLISHMENT (INCLUDE A PLAN VIEW DRAWING AND INDICATE WHAT WAS SET AND/OR FOUND)
- CHECK IF THERE IS ADDITIONAL INFORMATION ON BACK

DESCRIBE THE MONUMENT AND ACCESSORIES USED TO PERPETUATE THE LOCATION OF THE CORNER. (INCLUDE A PLAN VIEW DRAWING AND INDICATE WHAT WAS SET AND/OR FOUND) ALSO INCLUDE FOUR TIES TO THE SECTION CORNER AND DESCRIPTION OF THE TIES.



○ SET 3/4" X 30" IRON REBAR AT ALL TIE LOCATIONS

BEARINGS REFERENCED TO MAGNETIC

T - WHITE VINYL POST SET

TREES SHOWN HAVE BEARING TREE SIGNS NAILED TO FACE

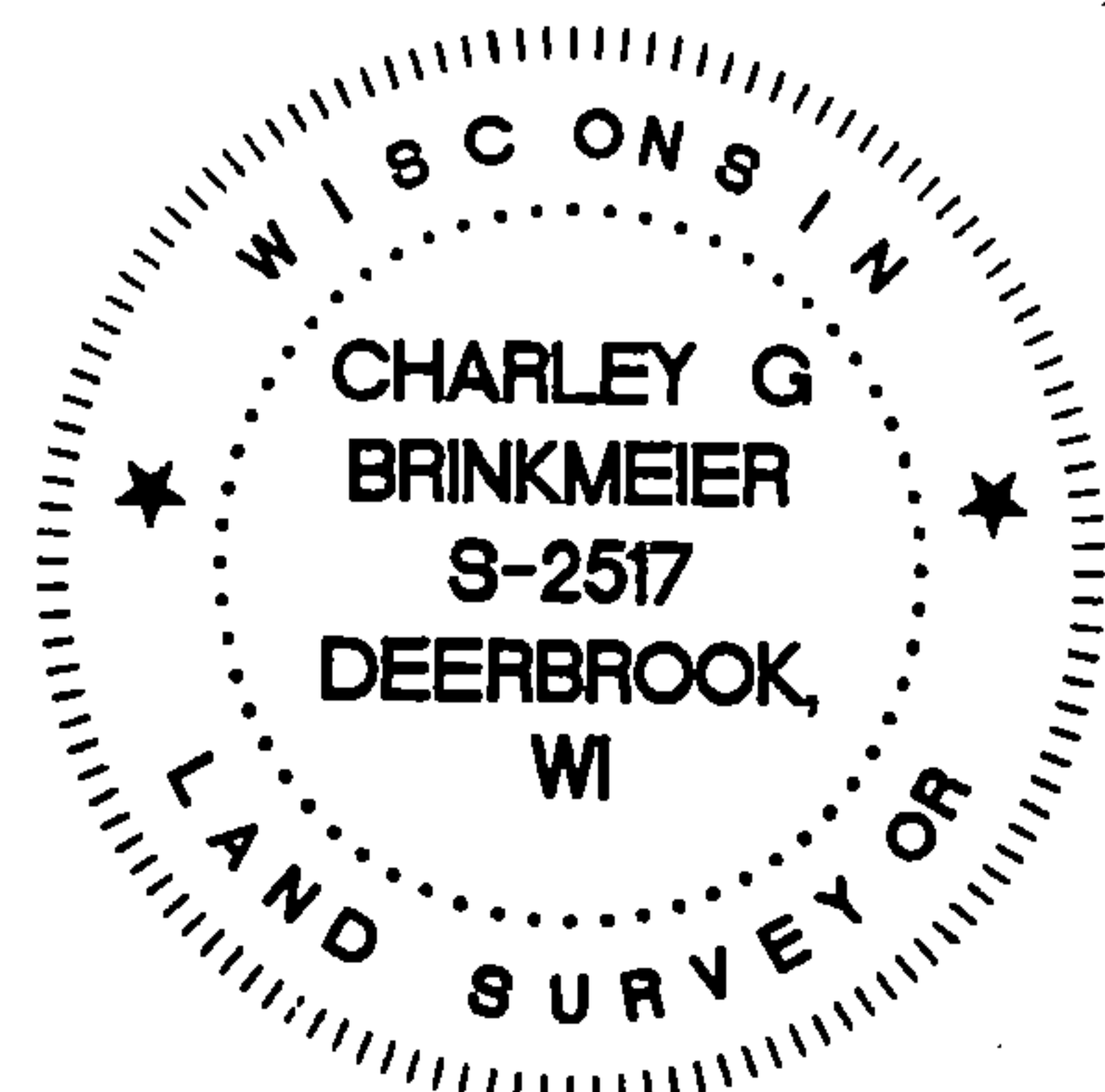
LCCS: N 427216.93
E 691843.98

FCCS: N 500676.42
E 843047.15

FOREST COUNTY, WI
CORTNEY BRITTEN CLEEREMAN
REGISTER OF DEEDS
RECEIVED FOR RECORD

APR 27 2018

Time: 10:00 A.M.
Vol.: Corner Restoration
Page Number: 2-11



INDEX NO.

CHARLEY G. BRINKMEIER

(type or print name) CERTIFY THAT THE CORNER LOCATION SHOWN ON THIS RECORD WAS DETERMINED BY ME OR UNDER MY DIRECTION AND CONTROL AND THAT THIS U.S. PUBLIC LAND SURVEY MONUMENT RECORD IS CORRECT AND COMPLETE TO THE BEST OF MY KNOWLEDGE AND BELIEF.

SIGNATURE

1-17-17
DATE

43413330020

86994

RESTORATION OF LOST ORIGINAL GOVERNMENT SURVEY CORNER

Index No. 2-11
211

STATE OF WISCONSIN

I NEAL SPERHAKE, do hereby certify that on the NINETEENTH day of NOVEMBER, 1962, I restored the SOUTH QUARTER SECTION CORNER of SECTION 33, TOWNSHIP 34 NORTH RANGE 13 EAST, Fourth Principal Meridian, as described hereon.

Resident Witnesses:

Richard Piontek - Waubesa.

This corner can also be described as: THE QUARTER SECTION CORNER BETWEEN SECTIONS 4, T33N-R13E, AND, 33, T34N-R13E, 4TH P.M.

History of original corner establishment:

This corner was established during the original survey of this township, as noted in the Original Field Notes for the Original Survey of T34N-R13E, 4th p.m.

Description of monument and accessories I established to perpetuate the location of this corner:

At the point determined for the location of the corner I emplaced a:

"GALVANIZED IRON PIPE, THREE FEET LONG, ONE INCH IN DIAMETER, WITH AN ALUMINUM CAP DENOTED AS, 'KIMBERLY-CLARK CORP T33-34N 1/4 BTWN 4 & 33 R13E SPERHAKE RLS 463 11-19-62".

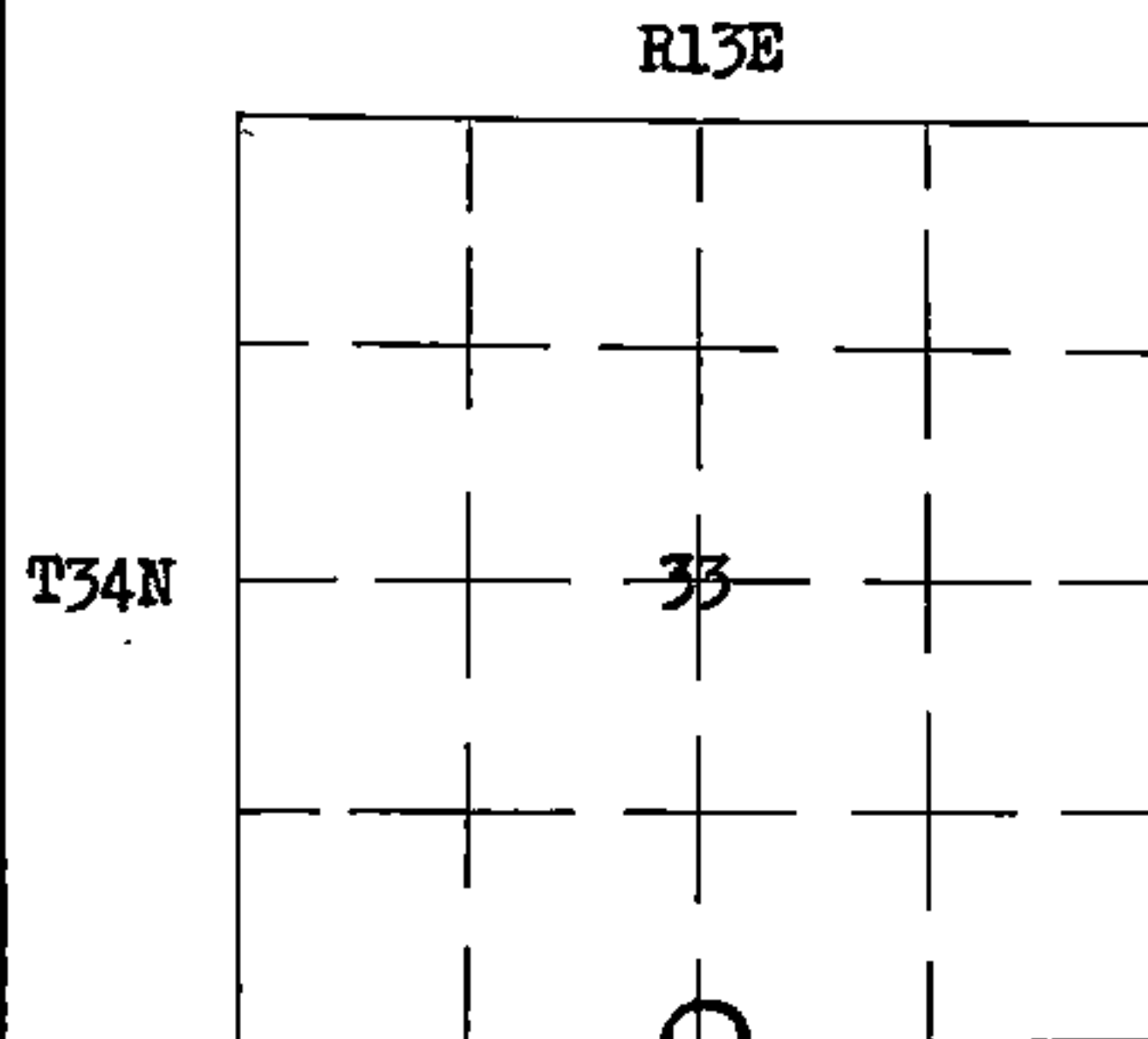
The pipe is witnessed by:

Maple 4 NORTH 62 links. (Scribed S33 NBT).

Aspen 6 S37°E 11 links. (Scribed S 4 NBT).

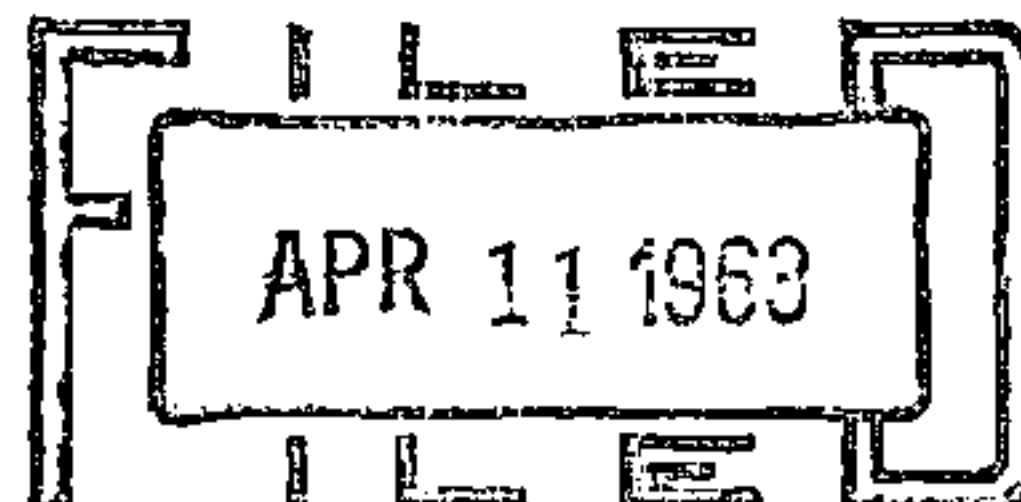
Description as to how corner was located:

No evidence of original corner present. Thus, set by proportionate measurement between the previously established section corners one half mile east and west respectively. Distance between the corners is 80.03 chains. Therefore, set 1/4 corner 40.01 1/2 chains from either section corner, on a straight line between them.



0 = Corner Monument Restored

REGISTER'S OFFICE
FOREST COUNTY, WIS.



At 2 o'clock PM
Karl O. Unruh Register of Deeds

Dated at Crandon, Wis., this 11th day of April, 19 63

Signature Neal Sperhake Title Registered Land Surveyor Registration No. S-463

~~Office of Register of Deeds~~, County of Forest, I hereby certify that the within was signed and sworn to instrument was filed in this office for record on the 11th day of April, 19 63

at Crandon Wis.

Adeline De Noble
Notary (Register of Deeds) Public
Forest County, Wisconsin
My commission expires February 6, 1966

Surveyor's Seal

43413330020