

225144

U.S. PUBLIC LAND SURVEY MONUMENT RECORD

HISTORY OF ORIGINAL CORNER ESTABLISHMENT AND SUBSEQUENT RESTORATION AND DESCRIPTION OF ANY RECORD, MONUMENT OCCUPATIONAL, TESTIMONIAL OR OTHER EVIDENCE CONSIDERED:

THE ORIGINAL CORNER WAS SET BY ALFRED MILLARD WITH THE ORIGINAL BEARING TREES OF:

YEL BIRCH 14" N60°W 29 LINKS

HEMLOCK 20" N46°E 29 LINKS

MAPLE 18" S47°E 24 LINKS

YEL BIRCH 12" S 27°W 54 LINKS

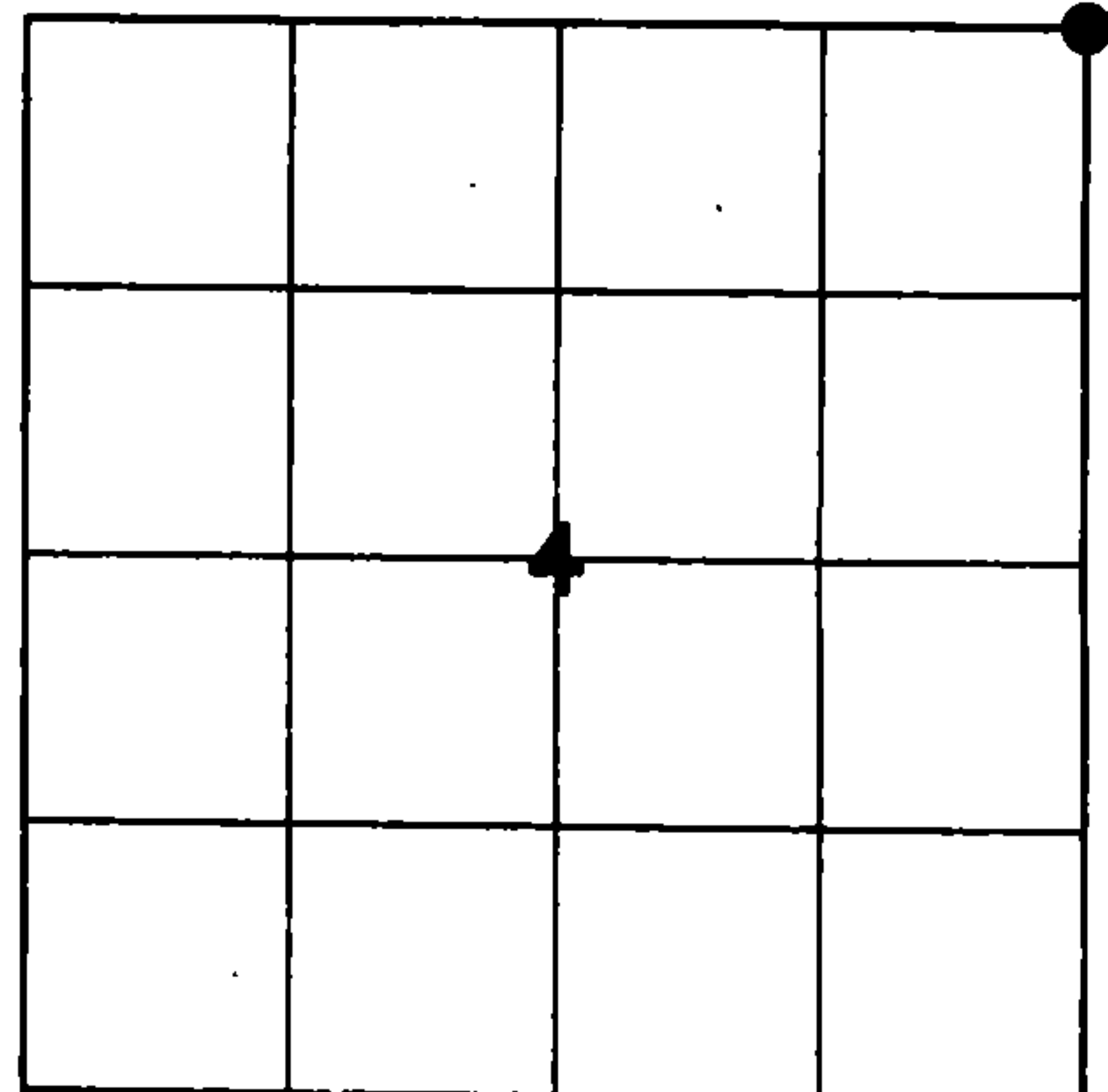
1960-KIMBERLY CLARK SET 1.25" PIPE WITH 4" CAP

1993-ARNOTT FOUND THE CAP AND SET ADDITIONAL TIES

11" MAPLE N75°E 16.36', S30°E 29.89', S40°W 25.76', N47°W 14.48'

2016-I FOUND THE 1.25" PIPE WITH 4" ALUMINUM CAP AND SET TIES AS SHOWN

● = LOCATION OF CORNER



SECTION 4

TOWNSHIP 33 NORTH, RANGE 13 EAST

TOWN OF LANGLADE

LANGLADE COUNTY, WISCONSIN

CORNER WAS: (CHECK ALL THAT APPLY)

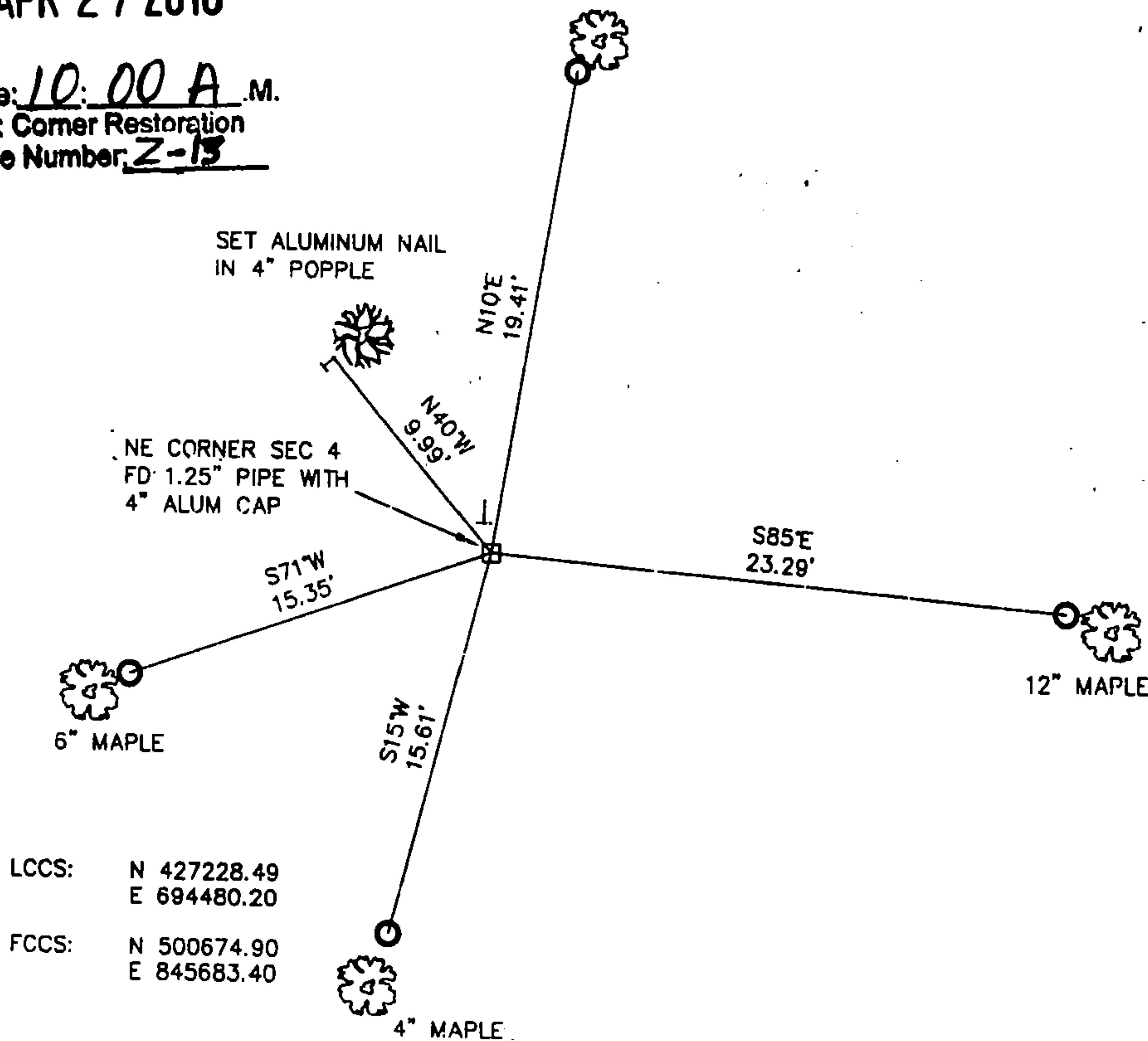
- RESTORED THROUGH ACCEPTANCE OF AN OBLITERATED EVIDENCE LOCATION
- RESTORED THROUGH ACCEPTANCE OF A FOUND PERPETUATED LOCATION
- CONSIDERED A LOST CORNER AND REESTABLISHED THROUGH LOST CORNER PROPORTIONATE METHODS (INCLUDE A PLAN VIEW DRAWING SHOWING DISTANCES AND DIRECTIONS TO OTHER PUBLIC LAND SURVEY CORNERS USED FOR PROPORTIONING AND DETERMINING THE CORNER LOCATION)
- RESTORED OR REESTABLISHED IN A LOCATION THAT DIFFERS FROM A PREVIOUS RESTORATION OR RE-ESTABLISHMENT (INCLUDE A PLAN VIEW DRAWING AND INDICATE WHAT WAS SET AND/OR FOUND)
- CHECK IF THERE IS ADDITIONAL INFORMATION ON BACK

DESCRIBE THE MONUMENT AND ACCESSORIES USED TO PERPETUATE THE LOCATION OF THE CORNER. (INCLUDE A PLAN VIEW DRAWING AND INDICATE WHAT WAS SET AND/OR FOUND) ALSO INCLUDE FOUR TIES TO THE SECTION CORNER AND DESCRIPTION OF THE TIES.

FOREST COUNTY, WI
CORTNEY BRITTEN CLEEREMAN
REGISTER OF DEEDS
RECEIVED FOR RECORD

APR 27 2018

Time: 10:00 A.M.
Vol.: Corner Restoration
Page Number: 2-13



LCCS: N 427228.49
E 694480.20

FCCS: N 500674.90
E 845683.40

○ SET 3/4" X 30" IRON REBAR AT ALL TIE LOCATIONS

BEARINGS REFERENCED TO MAGNETIC

T - WHITE VINYL POST SET

TREES SHOWN HAVE BEARING TREE SIGNS NAILED TO FACE

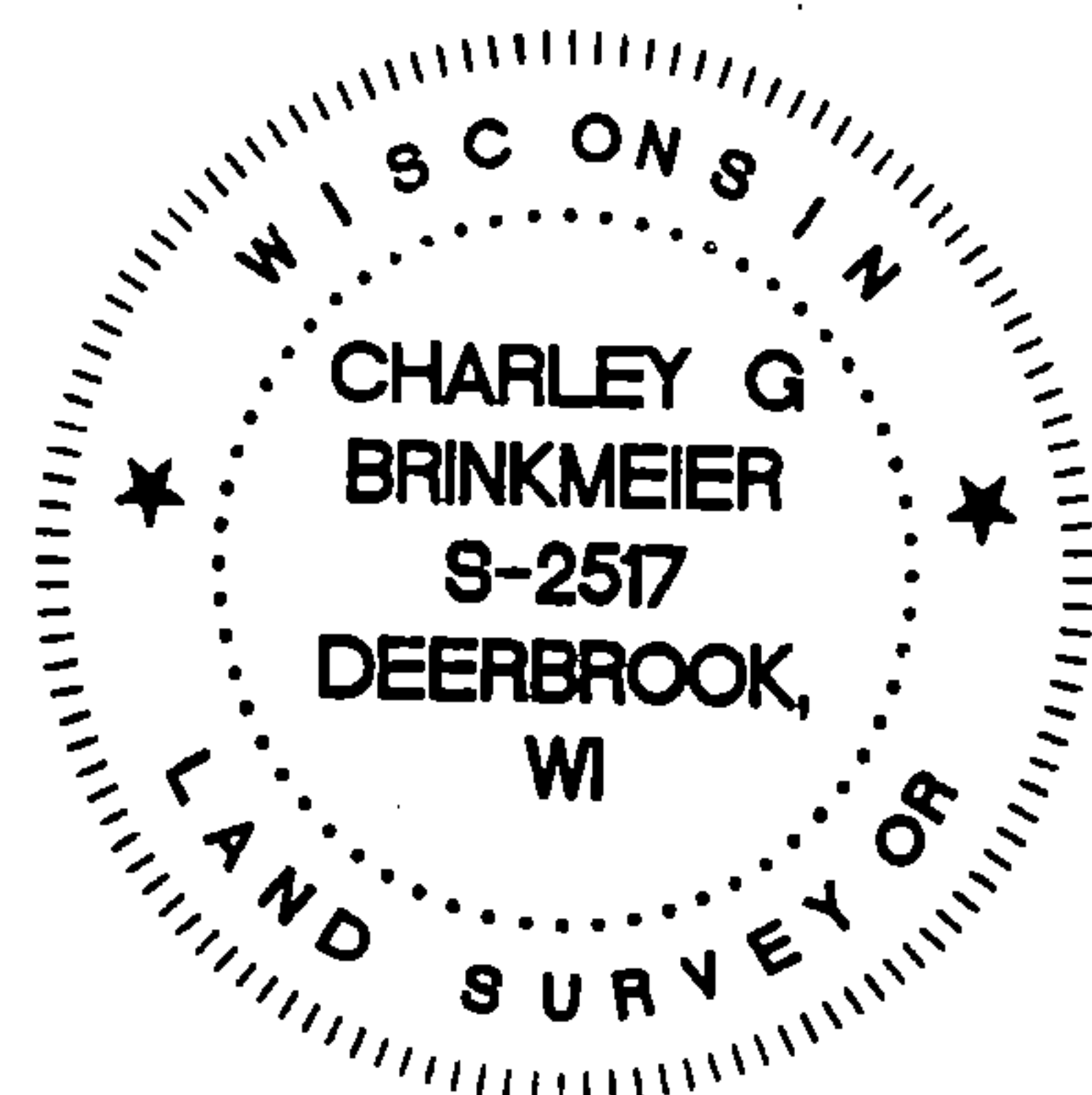


CHARLEY G. BRINKMEIER

(Type or print name) CERTIFY THAT THE CORNER LOCATION SHOWN ON THIS RECORD WAS DETERMINED BY ME OR UNDER MY DIRECTION AND CONTROL AND THAT THIS U.S. PUBLIC LAND SURVEY MONUMENT RECORD IS CORRECT AND COMPLETE TO THE BEST OF MY KNOWLEDGE AND BELIEF.

SIGNATURE

DATE 1-17-17



INDEX NO.

43413330000

STATE OF WISCONSIN

I NEAL SPERHAKE, do hereby certify that on the NINETEENTH day of NOVEMBER, 1962, I restored the SOUTHEAST SECTION CORNER of SECTION 33, TOWNSHIP 34 NORTH RANGE 13 EAST, Fourth Principal Meridian, as described hereon.

Resident Witnesses:

Richard Piontek - Waubesa

This corner can also be described as: THE SECTION CORNER COMMON TO SECTIONS 3 AND 4, T33N-R13E, AND, 33 AND 34, T34N-R13E, 4TH P.M.

History of Original Corner Establishment:

This corner was established during the original survey of this township, as noted in the Original Field Notes for the Original Survey of T34N-R13E, 4th p.m.

Description of monument and accessories I established to perpetuate the location of this corner:

At the point determined for the location of the corner I emplaced a:

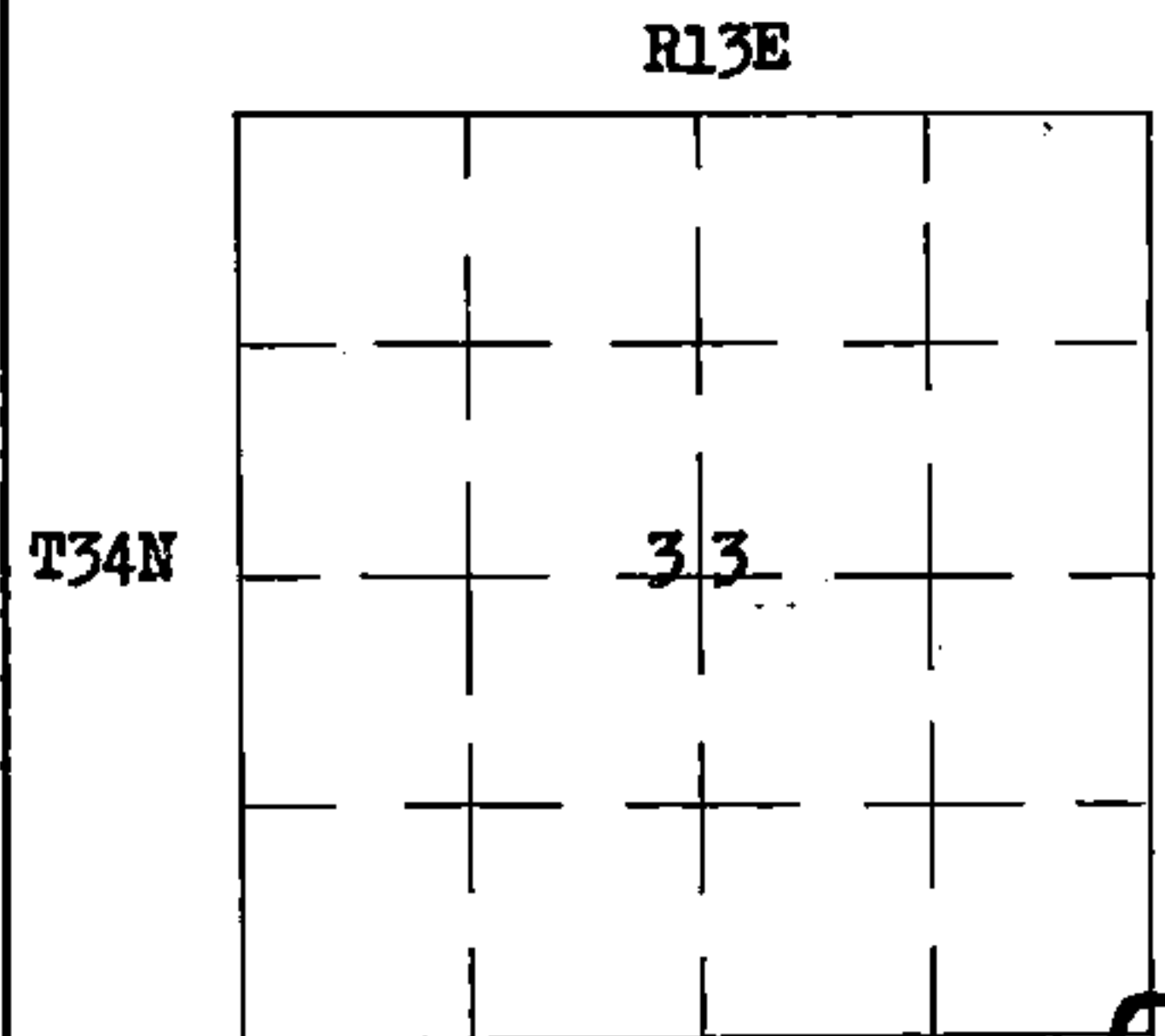
"GALVANIZED IRON PIPE, THREE FEET LONG, ONE INCH IN DIAMETER, WITH AN ALUMINUM CAP DENOTED AS, 'KIMBERLY-CLARK CORP T33-34N 33, 34, 3, 4, R13E SPERHAKE RLS 463 11-19-62".

The pipe is witnessed by:

- Maple 4 N71°E 24½ links. (Scribed S34 NBT).
- B. Cherry 4 N50°W 23 links. (Scribed S33 NBT).
- Maple 5 S82°E 28 links. (Scribed S 3 NBT).
- W. Birch 3 S39°W 41 links. (Scribed S 4 NBT).

Description as to how corner was located:

No evidence of original corner present. A comparison with noted terrain features and proportionate measurement convinces me that a mathematically determined point will restore the corner to as close a point as it was originally set as can be reasonably expected. To the east the 1/4 corner between 3 and 34 has been previously established. To the west the section corner of 4, 5, 32, 33, has been previously established. The distance between them is 120.04 chains. Thus, the corner of 3, 4, 33, 34, was set 40.01 chains west of the 1/4 between 3 and 34, and 80.03 chains east of the corner of 4, 5, 32, 33, and on a straight line between them. Terrain features in the vicinity verify this as follows: West on the south side of 34 - Record distance to stream = 65.15 chains. Actual distance to stream = 65.38 chains. West on the south side of 33 - Enter Swamp - Record = 19.00 chains. Actual = 18.82 chains. Leave swamp - record = 33.00 chains. Actual = 32.92 chains.



O = Corner monument restored

Dated at Crandon, Wis., this 11th day of April, 19 63

Signature Neal Sperhake Title Registered Land Surveyor Registration No. S-463

~~Official of Register of Deeds~~, County of Forest, I hereby certify that the within instrument was ~~filed in this office~~ signed and sworn to

~~for record~~ on the 11th day of April, 19 63, at Waubesa ~~waubesa~~ Wis.

Adeline De Noble
Notary ~~(Register of Deeds)~~ Public
~~of~~ Forest County, Wisconsin ~~Deputy~~
My commission expires February 6, 1966

Surveyor's Seal

43413330000

86997

REGISTER'S OFFICE
FOREST COUNTY, WIS.

FILED
APR 11 1963
FILED

At 2 o'clock P.M.
Karl G. Anger Register of Deeds
Anger

Faint circular stamp, possibly a seal or official mark, located in the bottom left corner of the page.

Faint circular stamp, possibly a seal or official mark, located in the bottom right corner of the page.