

U.S. PUBLIC LAND SURVEY MONUMENT RECORD

(As Required By s. A-E 5.02, WI Adm. Code)

History of original corner establishment and subsequent restorations and description of any record, monument, occupational, testimonial or other evidence considered:

ORIGINAL SURVEY BY NOWLIN IN 1864, N. BETWEEN SEC'S. 31 & 32, 40.0 CHS. SET 1/4 POST, B.T. BIR. 15" N.87°W. 11 LKS., B.T. BIR. 10" N.65°E. 32 LKS. FOUND 1" DIA. IRON PIPE NEAR FENCE COR. SAID PIPE USED AS 1/4 COR. IN ADJACENT SURVEYS BY ARNOTT R.L.S. NO. S-887.

REGISTER'S OFFICE
Forest County, Wis.
Received for record this 2nd day
of October A.D., 1998 at
9:30 o'clock A.M. and recorded
in Vol CORNER RESTORATION
page X-5 32-34-13
Christie Edlinger
Deputy Register of Deeds

Corner was: (Check All That Apply)

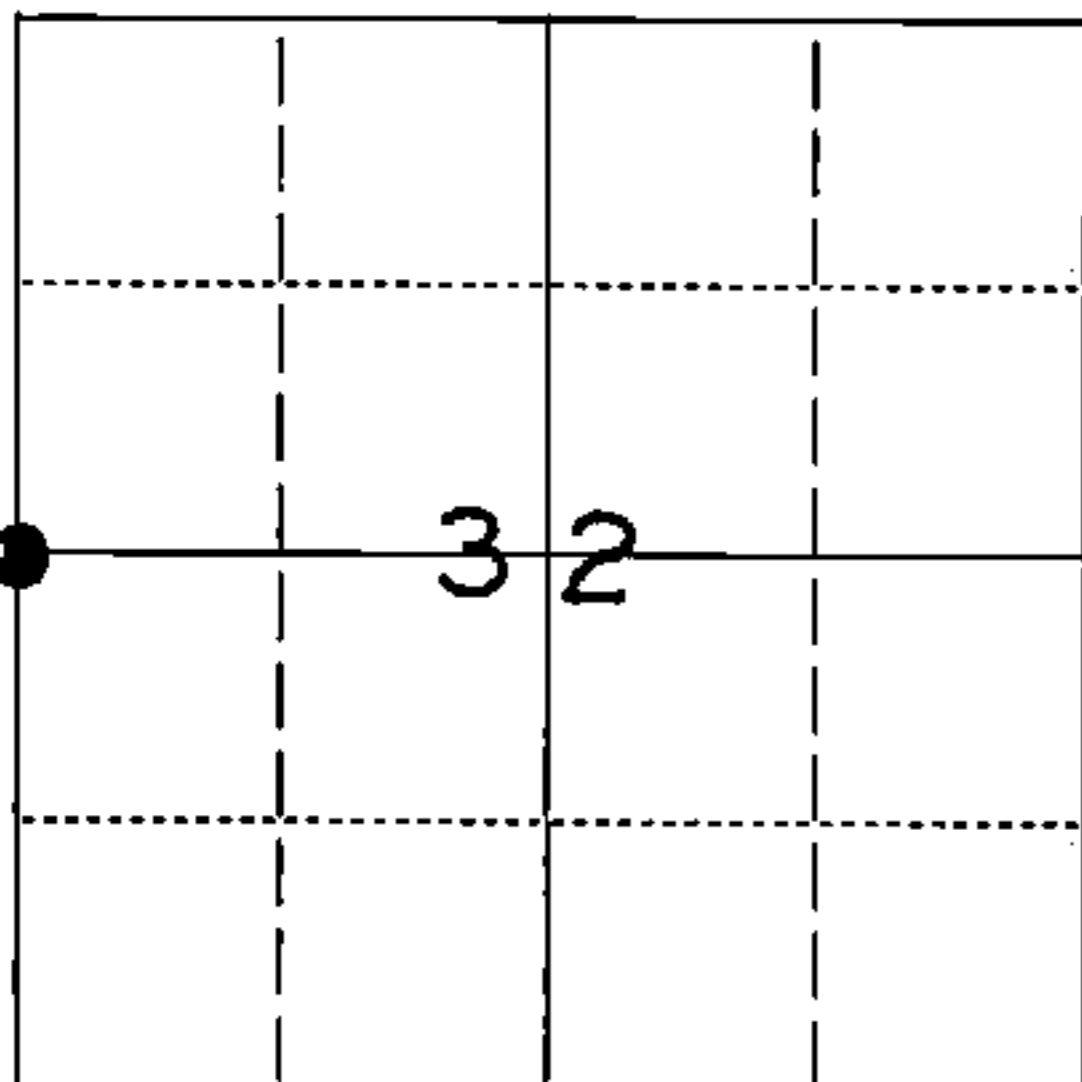
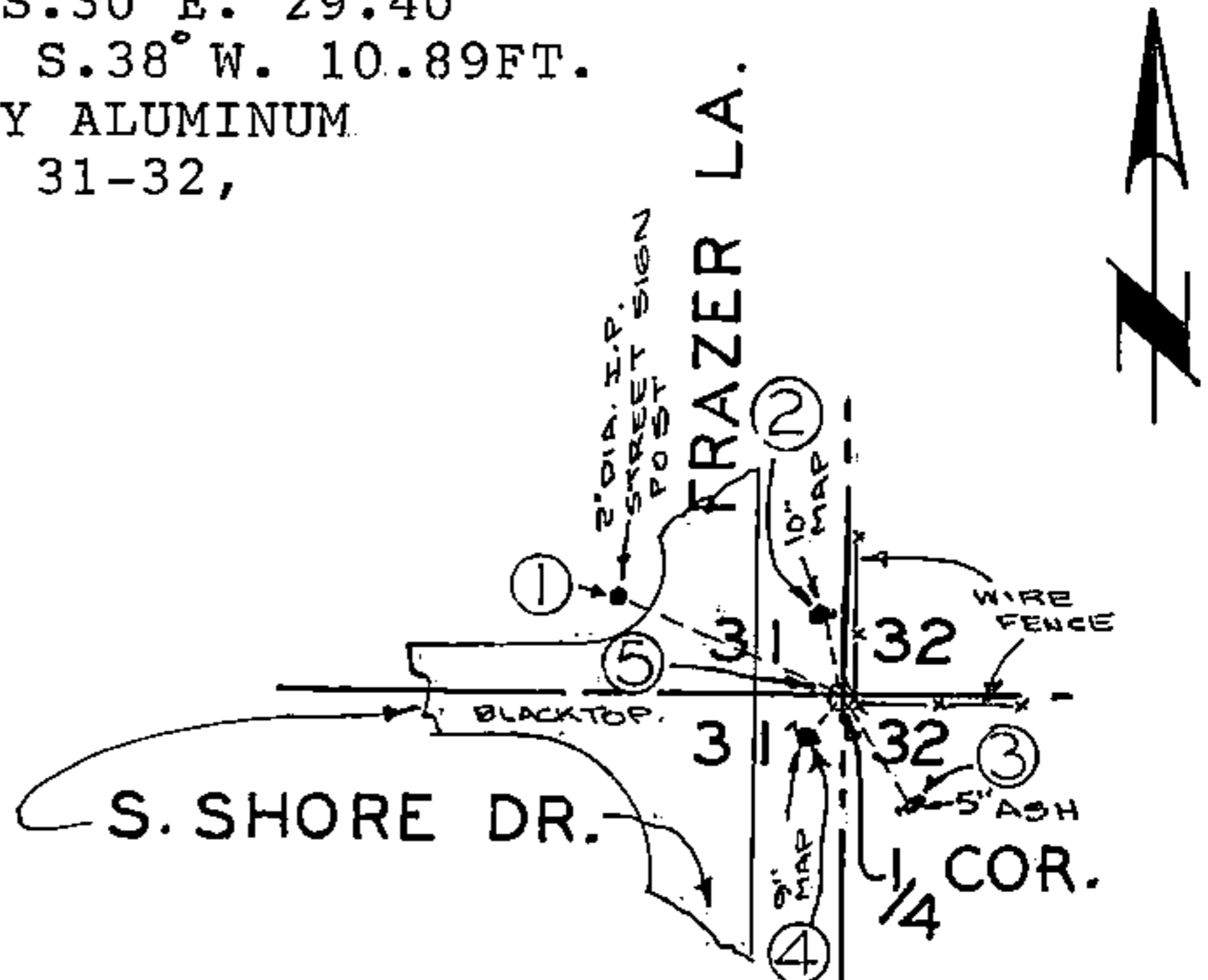
- Restored through acceptance of an obliterated evidence location
- Restored through acceptance of a found perpetuated location
- Considered a lost corner and reestablished through lost corner proportionate methods (include a plan view drawing showing distances and directions to other Public Land Survey Corners used for proportioning and determining the corner location)
- Restored or reestablished in a location that differs from a previous restoration or reestablishment (include a plan view drawing and indicate what was set and/or found)

Describe the monument and accessories used to perpetuate the location of this corner. (include a plan view drawing and indicate what was set and/or found)

1/4 SECTION COR. AND WITNESS MONUMENTS

- ① — CENTER OF 2" DIA. STREET SIGN POST N.68°W. 56.19FT.
- ② — B.T. 10" MAP. 60d SPIKE IN E. FACE, N.12°W. 15.23FT.
- ③ — B.T. 5" ASH 60d SPIKE IN W. FACE S.30°E. 29.40
- ④ — B.T. 9" MAP. 60d SPIKE IN W. FACE S.38°W. 10.89FT.
- ⑤ — 1/4 SEC. COR. STANDARD FOREST COUNTY ALUMINUM MONUMENT STAMPED 1/4 SEC. COR., SEC. 31-32, S-973.

The W. 1/4
corner of Section 32,
T. 34 N., R. 13 E.,
Fourth Principal Meridian,
Marinette County, Wisconsin

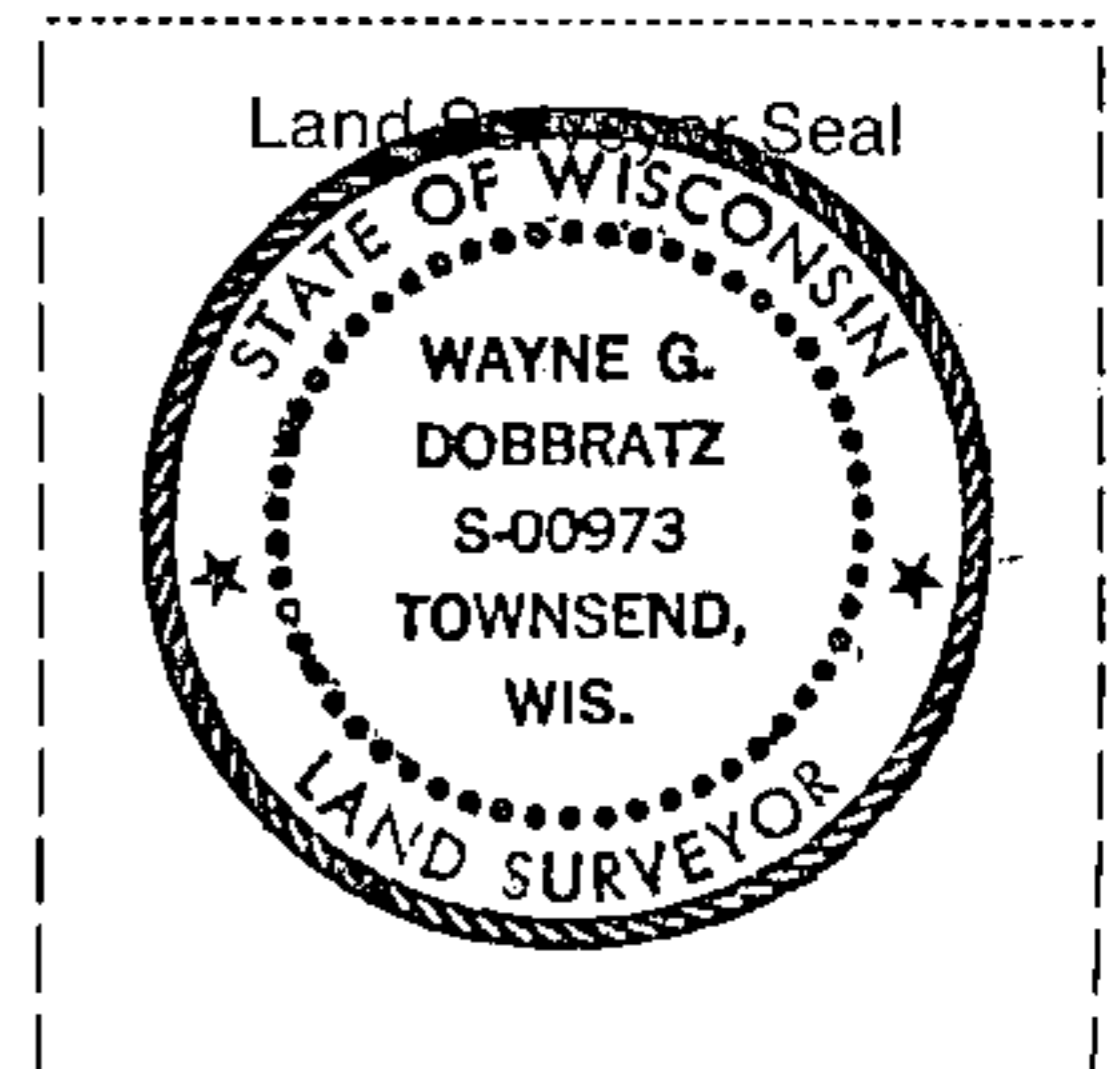


● = Location of Corner

WAYNE G. DOBBRATZ

(type or print name) certify that the corner location shown on this record was determined by me or under my direction and control and that this U.S. Public Land Survey Monument Record is correct and complete to the best of my knowledge and belief.

Wayne G. Dobbratz 5/26/95
Signature Date



Index No. X-5

43413312000