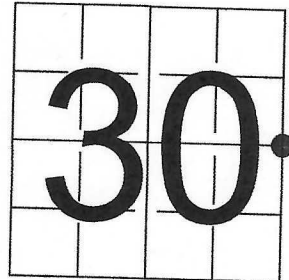


U S PUBLIC LAND SURVEY MONUMENT RECORD - ADDENDUM

NOTE: This form is intended and designed to fulfill all requirements of Wisconsin Administrative Code, Chapter A-E 7.08 U.S. Public Land Survey Monument Record (3) (a-i)

A-E 7.08(3)(a) Identity of corner
EAST 1/4 CORNER OF SECTION 30
TOWNSHIP 34 NORTH
RANGE 13 EAST OF THE 4TH PM
TOWN OF NASHVILLE,
COUNTY OF FOREST

WISCORS - FOREST COUNTY
N: 508,844.879 USft (XXX,XXX.XX)
E: 835,405.655 USft (XXX,XXX.XX)
Datum: NAD83 (2011)
GNSS Method RTN - Direct
GNSS Control WISCORS VRS



The coordinate value shown has been verified by the average of two or more GPS observations at a markedly different time. Values shown in parenthesis, are previously published measurements.

A-E 7.08(3)(b) Description of any record evidence, monument evidence, occupational evidence, testimonial evidence, or any other material evidence.

Original Surveyor: James L. Nowlin

Date of Original Survey Commenced: October 3, 1865
Completed: October 18, 1865

Original Accessories:
Fir 10 N 76° W 25 lks
Hemlock 14 N 35° E 18 lks

See Previous Monument Record: Index No. T-5 - January 27, 1984 - Surveyor 887 - Thomas R. Arnott

September 15, 1983 - Surveyor 887 - Thomas R. Arnott - indicates this position as "iron pipe fd. remonumented with standard Forest Co. AL. monument" on Record #341330-19831115.
June 26, 1985 - Surveyor 1098 - William F. Kelly - indicates this position as "4" aluminum cap monument" on Assessor's Plat of Upham's Pickerel Lake Plat.
June 12, 1998 - Surveyor 1935 - Daniel F. Higginbotham - indicates this position as "fd. aluminum monument" on Record #341330-19980612.

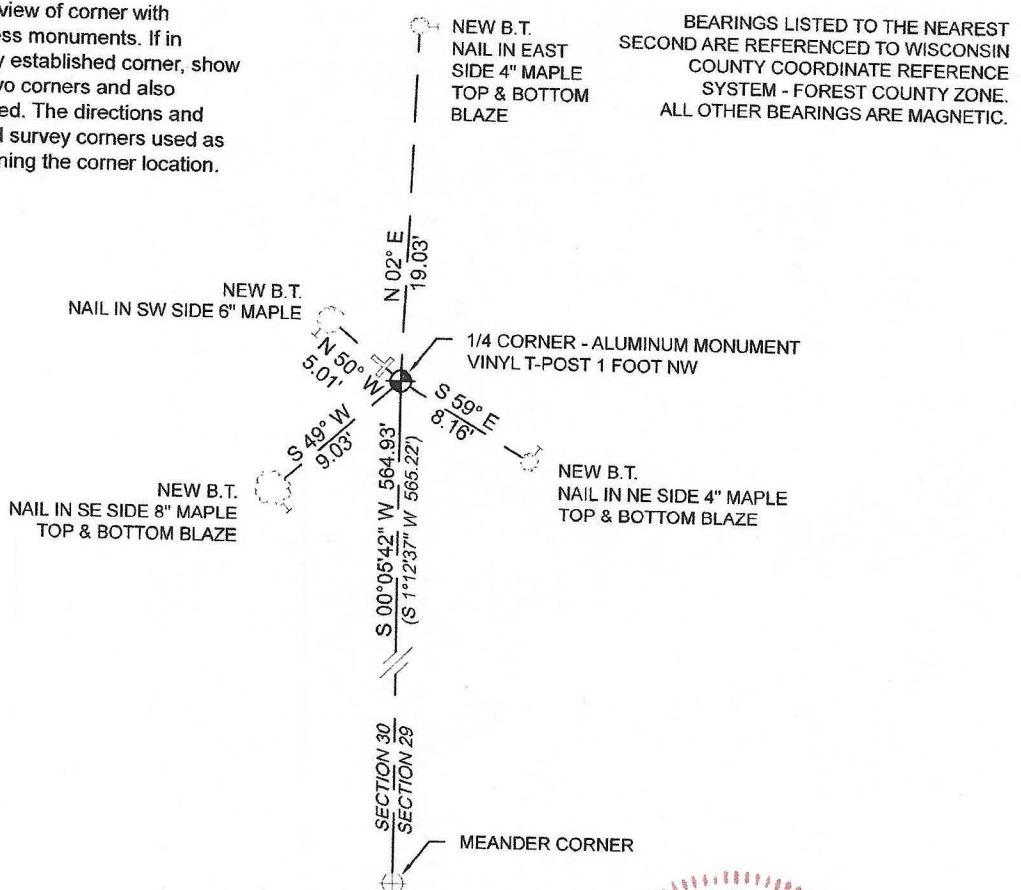
A-E 7.08(3)(f) Whether the corner was restored through acceptance of an obliterated location or a found perpetuated location.

February 24, 2022 - I found a Forest County aluminum monument, with an aluminum cap affixed to the top & stamped to identify the corner.

I did not find any BT's recovered or established as noted on U.S. Public Land Survey Monument Record T-5.

I accept this monument as a FOUND PERPETUATED LOCATION OF THE CORNER and established 4 new witnesses as shown below.

A-E 7.08(3)(c)(d)(e)(h) Plan view of corner with references to at least 4 witness monuments. If in disagreement with previously established corner, show the distances between the two corners and also indicate the ties to the disputed. The directions and distances to other public land survey corners used as evidence or used for determining the corner location.

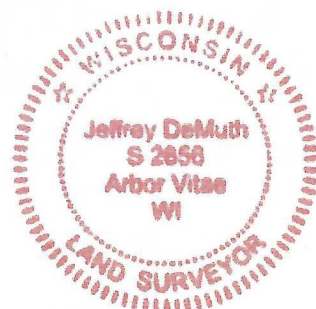


A-E 7.08(3)(i) I, Jeffrey L. DeMuth, Professional Land Surveyor No. S-2656, hereby certify that the corner location on this record was determined by me or under my direction and control and that this U.S. Public Land Survey Monument Record is correct and complete to the best of my knowledge, and belief

SIGNATURE

August 15, 2022

DATE



43413302000

U. S. PUBLIC LAND SURVEY MONUMENT RECORD

INSTRUCTIONS:

This record shall show the location of the corner and shall include all of the following nine elements (a through i).

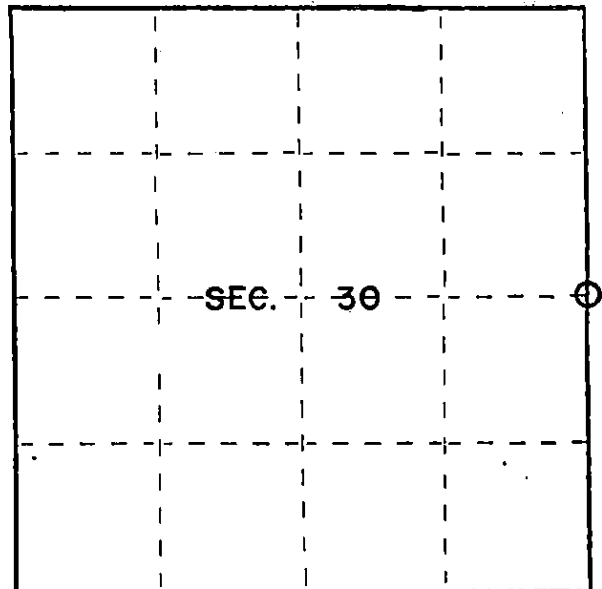
- (a) Identify the corner by reference to the U.S. public land survey system.

○ = Corner monument restored.

1/4 corner 29 & 30

T34N, R13E.

REGISTER'S OFFICE
Forest County, Wis. } 30th
Received for record this 30 day
of January A.D., 1984 at
8:30 o'clock AM and recorded
in Vol. 7-5 of CORNER
page 1-5 RESTORATIONS
Eugene Stratyn
Register of Deeds

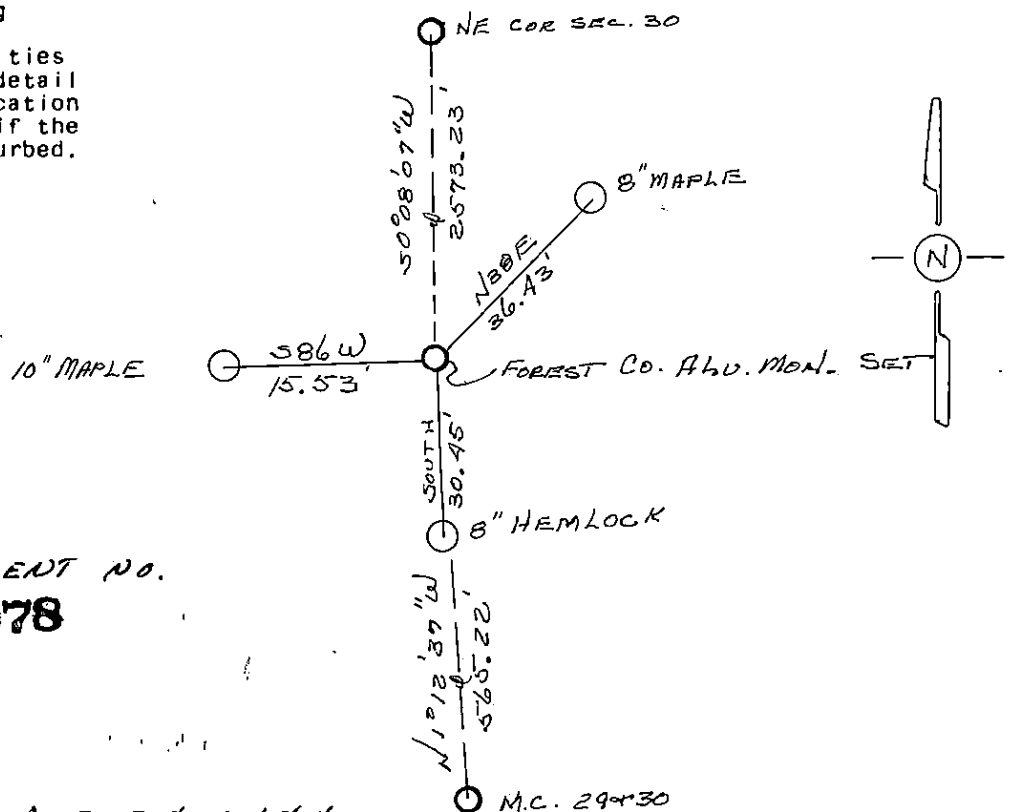


- (b) Describe any record evidence, monument evidence, occupational evidence, testimonial evidence or any other material evidence you considered, and whether the monument was found or placed.

Found fence corner and 1 1/2" iron pipe. No other evidence found.
Replaced iron pipe with Forest County Aluminum monument.

- (c) In the plan view drawing below, provide reference ties to at least 4 witness monuments, or, if the location is within a municipality, to at least 2 witness monuments. (Witness monuments shall be made of concrete, natural stone, iron or other equally durable material.)
Describe witness monuments.

- (d) Show a plan view drawing depicting the relevant monuments and reference ties which is sufficient in detail to enable accurate relocation of the corner monument if the corner monument is disturbed. Indicate north.



DOCUMENT NO.
125078

4341330.20000

15

- (e) Describe any material discrepancy between the location of the corner as restored or reestablished and the location of that corner as previously restored or reestablished by distance and direction. Show the discrepancy on the plan view drawing under (d), above. Show the distances between the corner as previously restored or reestablished and (1) the corner as restored or reestablished, and (2) to at least 2 of the witness monuments shown on the drawing in (d), above.

N/A

- (f) Was the corner restored through acceptance of (1) an obliterated evidence location, or, (2) a found perpetuated location?

Found perpetuated location.

- (g&h) Was the corner reestablished through lost corner proportionate methods? If so, show the method, including the directions and distances to other public land survey corners used as evidence or used for proportioning in determining the corner location?

NO

- (1) I, Thomas R. Arnott, Surveyor
(type or print name) certify that the corner location shown on this record was determined by me or under my direction and control and that this U.S. Public Land Survey Monument Record is correct and complete to the best of my knowledge and belief.

Thomas R. Arnott
Signature

27 Jan 87
Date

