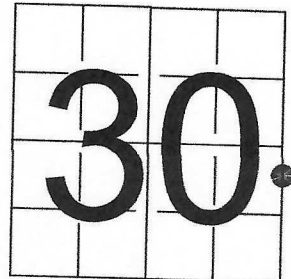


# U S PUBLIC LAND SURVEY MONUMENT RECORD - ADDENDUM

NOTE: This form is intended and designed to fulfill all requirements of Wisconsin Administrative Code, Chapter A-E 7.08 U.S. Public Land Survey Monument Record (3) (a-i)

A-E 7.08(3)(a) Identity of corner  
MEANDER CORNER - EAST LINE OF  
GOVERNMENT LOT 3, SECTION 30  
TOWNSHIP 34 NORTH  
RANGE 13 EAST OF THE 4TH PM  
TOWN OF NASHVILLE,  
COUNTY OF FOREST

WISCRS - FOREST COUNTY  
N: 508,279.952 USft (XXX,XXX.XX)  
E: 835,404.718 USft (XXX,XXX.XX)  
Datum: NAD83 (2011)  
GNSS Method RTN - Direct  
GNSS Control WISCORS VRS



The coordinate value shown has been verified by the average of two or more GPS observations at a markedly different time. Values shown in parenthesis, are previously published measurements.

A-E 7.08(3)(b) Description of any record evidence, monument evidence, occupational evidence, testimonial evidence, or any other material evidence.

Original Surveyor: James L. Nowlin

Date of Original Survey    Commenced:    October 3, 1865  
   Completed:    October 18, 1865

Original Accessories:  
W. Pine                    14    N 27° E            24 lks  
W. Pine                    15    N 80° W           25 lks

See Previous Monument Record: Index No. TU-5 - January 27, 1984 - Surveyor 887 - Thomas R. Arnott

September 15, 1983 - Surveyor 887 - Thomas R. Arnott - indicates this position as "iron pipe fd. remonumented with standard Forest Co. AL. monument" on Record #341330-19831115.

June 26, 1985 - Surveyor 1098 - William F. Kelly - indicates this position as "4" aluminum cap monument" on Assessor's Plat of Upham's Pickerel Lake Plat.

A-E 7.08(3)(f) Whether the corner was restored through acceptance of an obliterated location or a found perpetuated location.

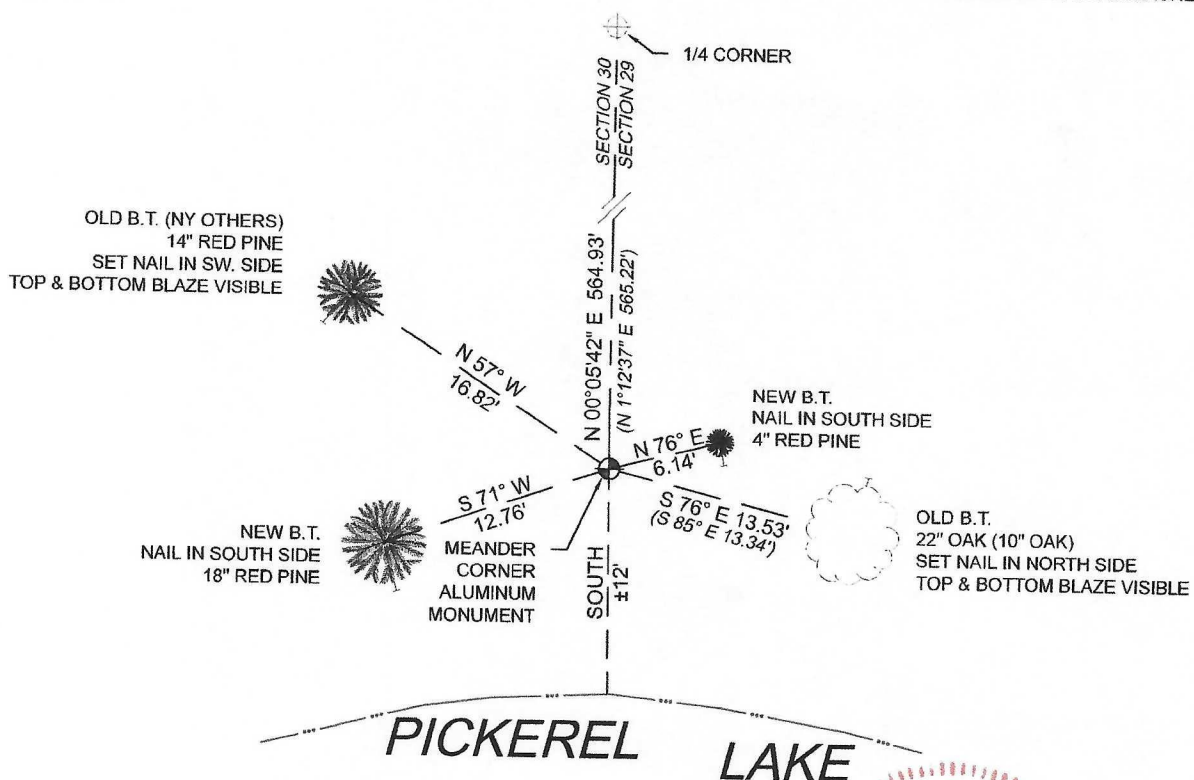
February 24, 2022 - I found a Forest County aluminum monument, with an aluminum cap affixed to the top & stamped to identify the corner.

I did find 1 B.T.'s recovered or established as noted on U.S. Public Land Survey Monument Record TU-5, as well as 1 B.T. by others.

I accept this monument as a FOUND PERPETUATED LOCATION OF THE CORNER and established 3 new witnesses as shown below.

A-E 7.08(3)(c)(d)(e)(h) Plan view of corner with references to at least 4 witness monuments. If in disagreement with previously established corner, show the distances between the two corners and also indicate the ties to the disputed. The directions and distances to other public land survey corners used as evidence or used for determining the corner location.

BEARINGS LISTED TO THE NEAREST  
SECOND ARE REFERENCED TO WISCONSIN  
COUNTY COORDINATE REFERENCE  
SYSTEM - FOREST COUNTY ZONE.  
ALL OTHER BEARINGS ARE MAGNETIC.



A-E 7.08(3)(i) I, Jeffrey L. DeMuth, Professional Land Surveyor No. S-2656, hereby certify that the corner location on this record was determined by me or under my direction and control and that this U.S. Public Land Survey Monument Record is correct and complete to the best of my knowledge, and belief

SIGNATURE

August 15, 2022

DATE



43413301200

# U. S. PUBLIC LAND SURVEY MONUMENT RECORD

INSTRUCTIONS: This record shall show the location of the corner and shall include all of the following nine elements (a through i).

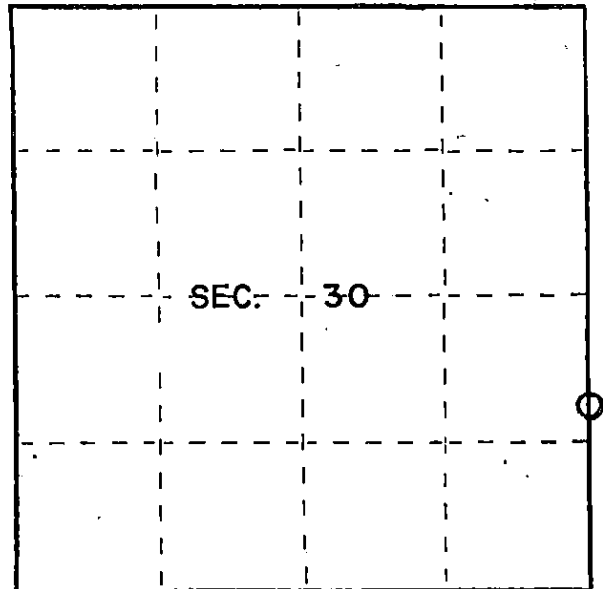
- (a) Identify the corner by reference to the U.S. public land survey system.

○ = Corner monument restored.

M.C. 29 & 30

T34N, R13E

REGISTER'S OFFICE  
Forest County, Wis.  
Received for record this 30<sup>th</sup> day  
of January A.D., 1984 at  
8:30 o'clock AM and recorded  
in Vol. of CORNER  
page TU-5 RESTORATIONS  
*Eugene Stargary*  
Register of Deeds



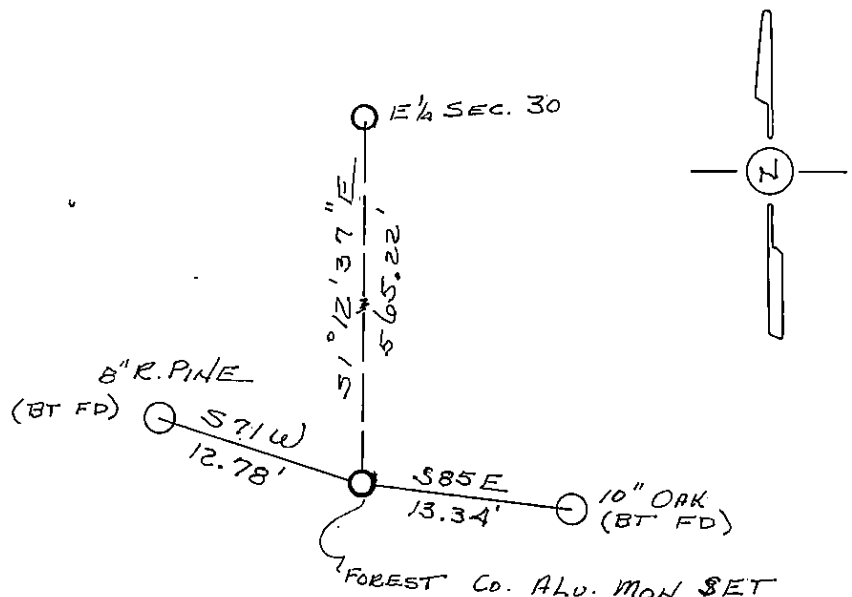
- (b) Describe any record evidence, monument evidence, occupational evidence, testimonial evidence or any other material evidence you considered, and whether the monument was found or placed.

Found  $1\frac{1}{2}$ " iron pipe.

Replaced iron pipe with Forest County Aluminum monument.

- (c) In the plan view drawing below, provide reference ties to at least 4 witness monuments, or, if the location is within a municipality, to at least 2 witness monuments. (Witness monuments shall be made of concrete, natural stone, iron or other equally durable material.) Describe witness monuments.

- (d) Show a plan view drawing depicting the relevant monuments and reference ties which is sufficient in detail to enable accurate relocation of the corner monument if the corner monument is disturbed. Indicate north.



DOCUMENT NO.  
125079

434.13 301200

TU5

- (e) Describe any material discrepancy between the location of the corner as restored or reestablished and the location of that corner as previously restored or reestablished by distance and direction. Show the discrepancy on the plan view drawing under (d), above. Show the distances between the corner as previously restored or reestablished and (1) the corner as restored or reestablished, and (2) to at least 2 of the witness monuments shown on the drawing in (d), above.

N/A

- (f) Was the corner restored through acceptance of (1) an obliterated evidence location, or, (2) a found perpetuated location?

Found perpetuated location.

- (g&h) Was the corner reestablished through lost corner proportionate methods? If so, show the method, including the directions and distances to other public land survey corners used as evidence or used for proportioning in determining the corner location?

NO

- (1) 1. Thomas R. Arnott, Surveyor  
(Type or print name) certify that the corner location shown on this record was determined by me or under my direction and control and that this U.S. Public Land Survey Monument Record is correct and complete to the best of my knowledge and belief.

Thomas R. Arnott 27 June 87  
Signature Date

