

U.S. PUBLIC LAND SURVEY MONUMENT RECORD

This form is intended and designed to fulfill all requirements of Wisconsin Administrative Code, Chapter A-E 7.08 U.S. Public Land Survey Monument Record (3) (a)(b)(c)(d)(e)(f)(g)(h)(i).

The coordinate value shown has been verified by at least one of the following methods: 1) Comparison to a previously GNSS determined published value; 2) The value is the average of two or more GNSS observations at a markedly different time; 3) One or more distances were measured back to the GNSS observed corner from temporary GNSS observed offset locations.

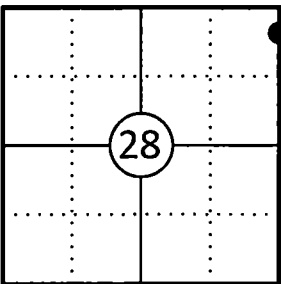
A-E 7.08(3)(a) Identity of the corner:

Meander Corner Section 28	WISCRS - Forest County
Township 34 North	N: 510437.157 USFT
Range 13 East	E: 845891.686 USFT
Town of Nashville	Datum: NAD 83 (2011)
County of Forest	GNSS Method: WISCRS VRS Direct Observation

Original Corner Information:

Original Surveyor: J.L. Nowlin	Original B.T.'s: Bl Oak 14" - N80°E, 18 links
Date of Survey: October 1865	Bl Oak 12" - S45°W, 25 links

Corner ID: 43413283200



A-E 7.08(3)(b)(e)(f)(g) Describe any record evidence, monument evidence, occupational evidence, testimonial evidence or any other material evidence considered. Describe any discrepancy between the corner restored and any previously established location. State whether the corners was restored through acceptance of obliterated evidence, a found perpetuated location, or determined by proportionate methods.

05/21/1985 Norman A. Harrison, Forest County Survey File # 341328-19850424 shows the east line of Section 28 as a straight line between the northeast and southeast corners of Section 28 and does not show any Meander Corners.

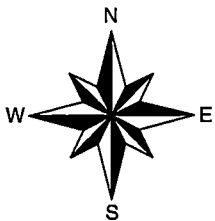
01/25/2010 Robert O. Kamps, Forest County Certified Survey Map Vol. 8, Pg. 122 shows the east line of Section 28 as a straight line between the northeast and southeast corners of Section 28 and does not show any Meander Corners.

12/09/2020 Timothy J. Rusch, Forest County Certified Survey Map Vol. 10, Pg. 52 found an iron pipe at the Meander Corner.

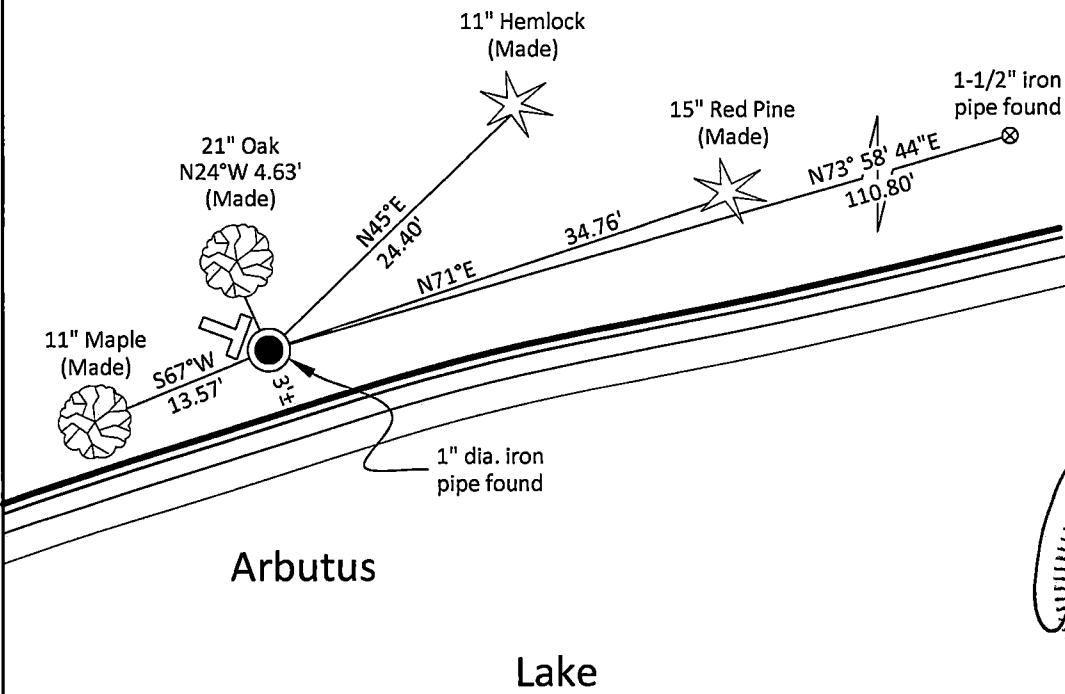
10/06/2025 I found and accepted a 1" dia. iron pipe 3" above grade and 3 feet from the shore of Arbutus Lake. This pipe matches Rusch's position. I used an iron pipe from Rusch's Certified Survey Map and made four new bearing trees to witness the corner as shown below. Note: This corner lies 4.58 feet west of a straight line between the northeast and southeast corners of Section 28.

A-E 7.08(3)(c)(d)(e)(h) Plan view of corner with ties to at least four witnesses. If in disagreement with previously established corner, show the distances between the two corners and also indicate the tie to the disputed corner. Distances and directions to other PLSS used as evidence or for proportioning.

Bearings given to the nearest second are Forest County Grid.
All other bearings are magnetic



- * Vinyl "T" post 0.7' northwest of corner.
- * Distances to bearing trees are to nail in side with BT tag on tree.
- * Sketch is not to scale



A-E 7.08(3)(i) - Certification
I, Gregory S. Maines, Professional Land Surveyor No. 2729, hereby certify that the corner location on this record was referenced by me or under my direction and control and that this U.S. Public Land Survey Monument Record is complete to the best of my knowledge and belief.