

CERTIFIED LAND CORNER RESTORATION

Index No. U14

State of Wisconsin }
County of Forest } ss.

History of original corner establishment:

U-4

I Vernon Wickstrom, do hereby certify that on the 15th day of November, 1965, I found evidence of the CENTER OF SW 1/4 corner of SECTION 27 Township 34, North, Range 13 East, Fourth, Principal Meridian, as described hereon; and that from this evidence I established a new monument and accessories as described hereon to perpetuate the original location of this corner.

Description of corner evidence found:

Resident witnesses:

Benny Klecwiwski

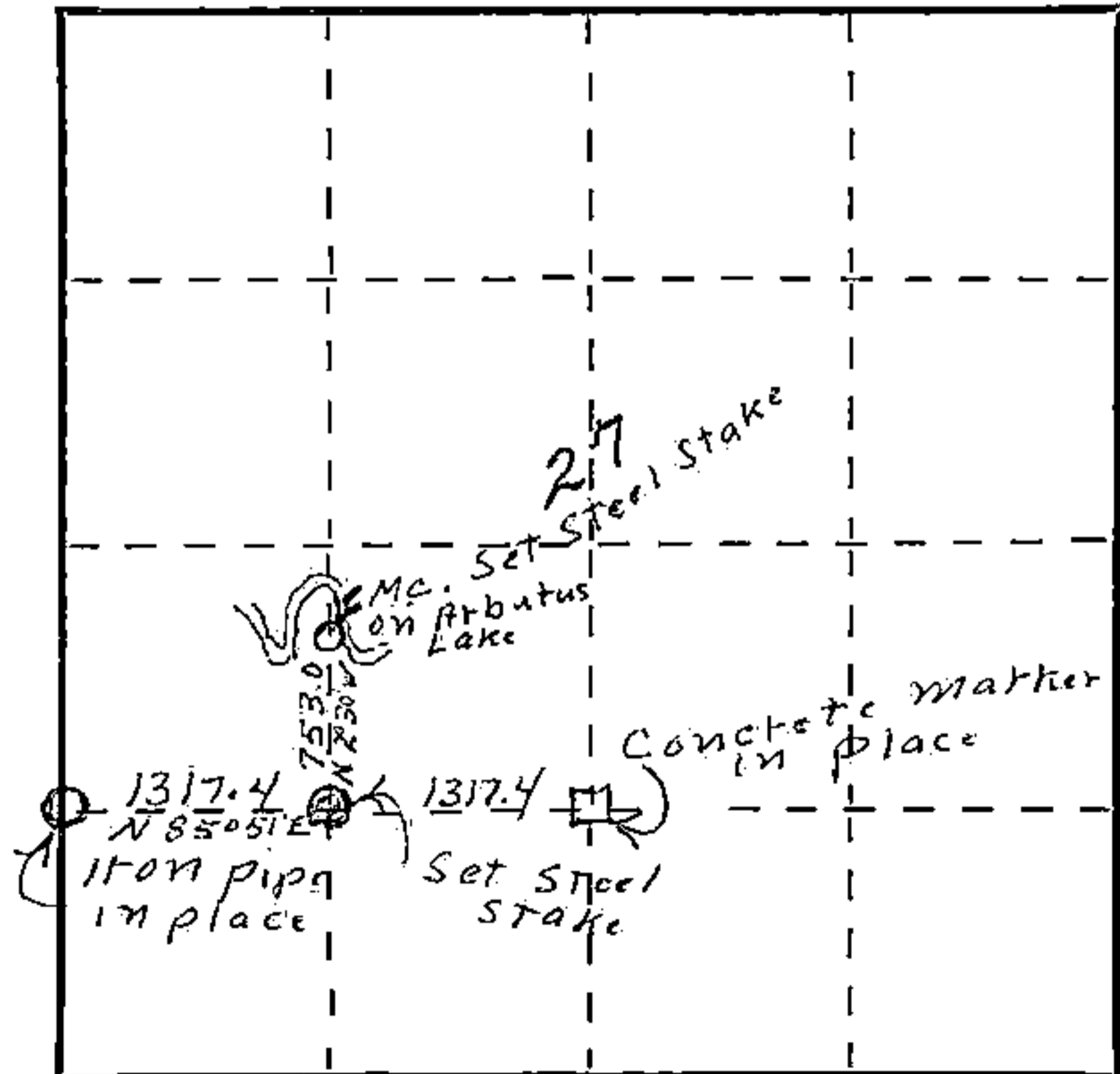
Armstrong Creek Wis

Description of monument and accessories I established to perpetuate the original location of this corner.

Found no corner for the center of the SW 1/4 of section 27, T.34N., R.13E., set same by proportional measurement of distance between south sixteenth on section line 28/27 and south sixteenth on 1/4 line. Found bearing of this line to be N. 85° 51' E. Ran north from thus established center of SW 1/4 on a line bearing N 2° 30' W. a distance of 753.0' to the southern shore of Arbutus lake. Set steel stake 1.5" x 30" for Meander corner.

FORM 985 R. G. MILLER CO., MILWAUKEE

Section 27



○ = Corner monument restored.

Dated at Grandon, Wis., this 22 day of November, 1965.

Signature Vernon Wickstrom Title Land Surveyor Registration No. 5-448
(County Surveyor, Registered Land Surveyor, or other duly authorized official)

Office of Register of Deeds, County of Forest, I hereby certify that the within instrument was filed in this office for record on the 22 day of November, 1965 at 10:30 o'clock A.M.

ANNA PETERSON

(Register of Deeds)

90876

By Karl A. Tuzer Deputy

43413271030