

NOV 08 2023

CORTNEY BRITTEN CLEEREMAN
REGISTER OF DEEDS

241605

U S PUBLIC LAND SURVEY MONUMENT RECORD - ADDENDUM

NOTE: This form is intended and designed to fulfill all requirements of Wisconsin Administrative Code, Chapter A-E 7.08 U.S. Public Land Survey Monument Record (3) (a-i)

A-E 7.08(3)(a) Identity of corner:
SOUTHEAST CORNER SECTION 25,
TOWNSHIP 34 NORTH,
RANGE 13 EAST OF THE 4TH PM,
TOWN OF NASHVILLE,
COUNTY OF FOREST

WISCORS - FOREST COUNTY
N: 505,804.153 USft (XXX,XXX.XXX)
E: 861,571.853 USft (XXX,XXX.XXX)
Datum: NAD83 (2011)
GNSS Method RTK
Base from GNSS Control set WISCORS VRS



The coordinate value shown has been verified by the average of two or more GPS observations at a markedly different time. Coordinates shown in parenthesis are previously published values.

A-E 7.08(3)(b)

Original Surveyor: Alfred Millard

Date of Original Survey Commenced: August, 1857
 Completed: June, 1857

Original Accessories:
Y. Birch 22 N 20° W 13 Links
Hemlock 8 S 47° W 17 Links
Y. Birch 22 S 8° E 35 Links
Y. Birch 16 N 82° E 56 Links

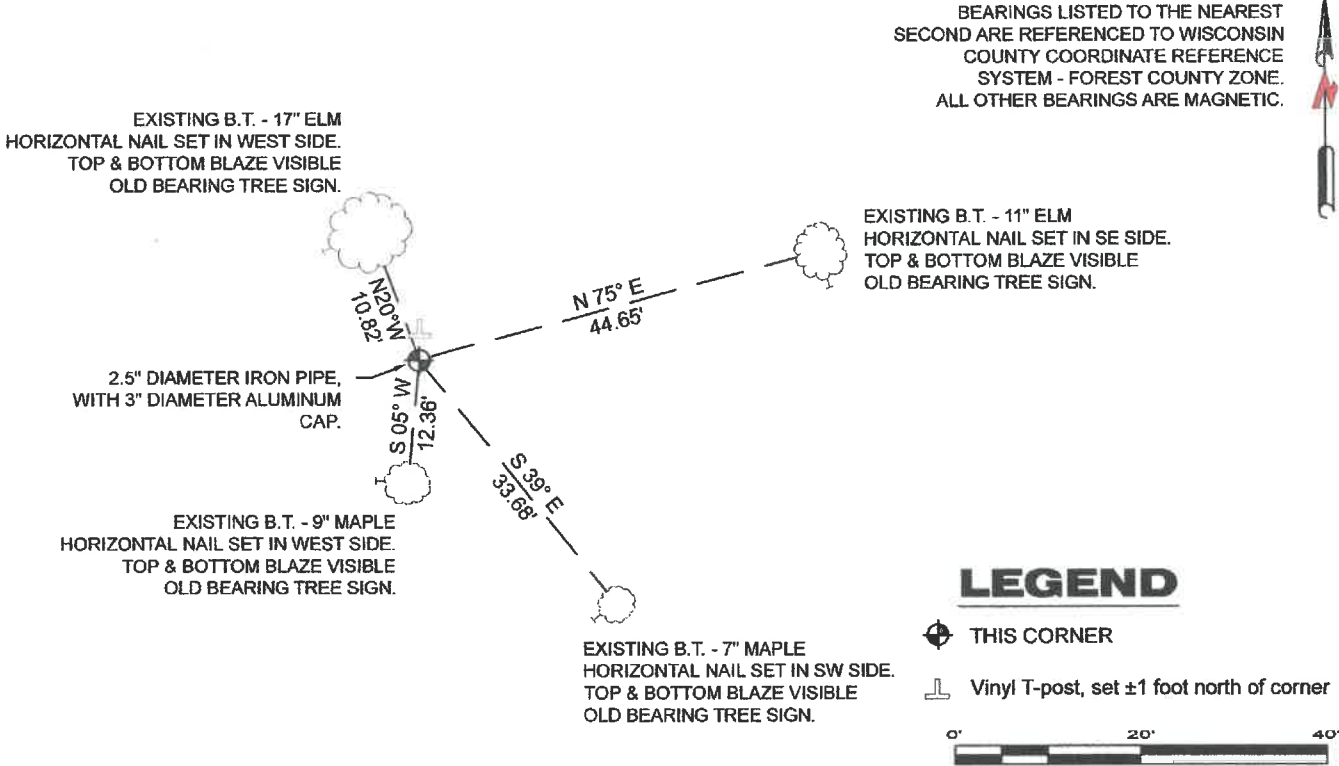
See previous Restoration of Lost Original Government Survey Corner dated January 12, 1965 - Index V 1 - Surveyor 463 - Neal Sperhake

Thence:

1983 - Surveyor 1558 - Milo E. Stefan - Placed an aluminum monument at the corner location. I found no record of Stefan's corner.

March 7, 2023 - I found a 2.5" diameter iron pipe with a 3" diameter aluminum cap stamped to identify the corner.
I also found 4 existing bearing trees (no record), and a steel fence post with a National Forest sign attached.
I did not find Sperhake's Kimberly Clark monument.
I placed new nails in the existing bearing trees, and reference as shown below.

A-E 7.08(3)(c)(d) Plan view of corner with references to at least 4 witness monuments.



A-E 7.08(3)(e) 1857 Surveyor set a post, 1965 Surveyor set Kimberly Clark monument, 1983 Surveyor set an aluminum monument.
2023 - I found a 2.5" diameter iron pipe with a 3" diameter aluminum cap.

A-E 7.08(3)(f) I accept this monument as a FOUND PERPETUATED LOCATION of the corner.
A-E 7.08(3)(g)(h) I assume that this corner was determined through lost-corner-proportionate methods.

A-E 7.08(3)(i) I, Jeffrey L. DeMuth, Professional Land Surveyor No. S-2656, hereby certify that the corner location on this record was determined by me or under my direction and control, and that this U.S. Public Land Survey Monument Record is correct and complete to the best of my knowledge, and belief.

SIGNATURE _____ DATE April 11, 2023



43413250000

V1