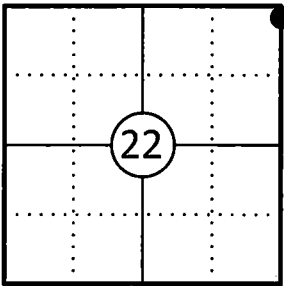


U.S. PUBLIC LAND SURVEY MONUMENT RECORD

This form is intended and designed to fulfill all requirements of Wisconsin Administrative Code, Chapter A-E 7.08 U.S. Public Land Survey Monument Record (3) (a)(b)(c)(d)(e)(f)(g)(h)(i).

The coordinate value shown has been verified by at least one of the following methods: 1) Comparison to a previously GNSS determined published value; 2) The value is the average of two or more GNSS observations at a markedly different time; 3) One or more distances were measured back to the GNSS observed corner from temporary GNSS observed offset locations.

Corner ID: 43413220039



A-E 7.08(3)(a) Identity of the corner:

Meander (Witness) Corner Section 22	WISCRS - Forest County
Township 34 North	N: 516764.412 USFT
Range 13 East	E: 851624.014 USFT
Town of Nashville	Datum: NAD 83 (2011)
County of Forest	GNSS Method: WISCORS VRS Direct Observation

Original Corner Information:

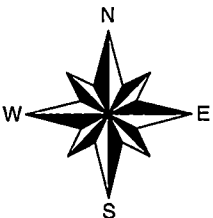
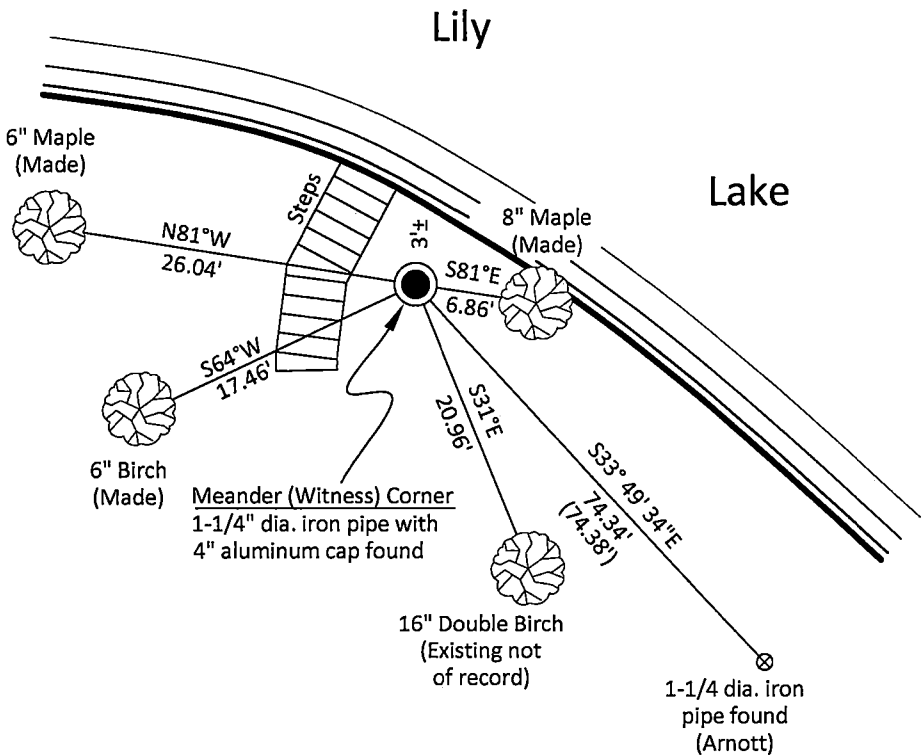
Original Surveyor: J.L. Nowlin	Original B.T.'s: Hemlock 18" - S80°W, 37 links
Date of Survey: October 1865	Hemlock 20" - N4°E, 40 links

A-E 7.08(3)(b)(e)(f)(g) Describe any record evidence, monument evidence, occupational evidence, testimonial evidence or any other material evidence considered. Describe any discrepancy between the corner restored and any previously established location. State whether the corners was restored through acceptance of obliterated evidence, a found perpetuated location, or determined by proportionate methods.

- 10/24/1963 Restoration of Lost Original Government Survey Corner by Neal Sperhake indicates he set a 1" dia. iron pipe with a Kimberly Clark Corp aluminum cap for a meander (witness) corner to the section corner and made two bearing trees. The cap is stamped "WC - Corner is North 132.00 feet". (See corner form for prior history and additional information).
- 08/27/1978 Thomas R. Arnott Forest County Certified Survey Map Vol. 2, Pg. 223 found an iron pipe with aluminum cap labeled WC on his survey map shows the section corner 132.00 feet north in the lake. (Also see Forest Co Surveyor File # 341322).
- 10/08/1998 Glen Barker Forest Co Surveyor File # 341322-19981008 found a 1" iron pipe w/4" alloy cap for the Witness Corner and shows section corner in the lake.
- 04/15/2025 The original government survey notes for the line between Sections 22 and 23 indicate they set a meander corner at 78.00 chains and does not mention the corner in the lake. I found and accepted a 1-1/4" dia. iron pipe with a Kimberly Clark Corp 4" dia. aluminum cap stamped to identify the corner along with "WC Corner is North 132.00 Feet WC" stamped on it at the Meander (Witness) Corner location along with one existing bearing tree, not of record. This location fits well with surveys in the area. For references I used an iron pipe shown on Certified Survey Map Vol. 2, Pg. 223, made three additional bearing trees to witness the corner as shown below.

A-E 7.08(3)(c)(d)(e)(h) Plan view of corner with ties to at least four witnesses. If in disagreement with previously established corner, show the distances between the two corners and also indicate the tie to the disputed corner. Distances and directions to other PLSS used as evidence or for proportioning.

Bearings given to the nearest second are Forest County Grid.
All other bearings are magnetic



- * No Vinyl post was set due to being close to steps by residence.
- * Distances to bearing trees are to nail in side with no BT signs due to being in the yard of a residence.
- * Sketch is not to scale



A-E 7.08(3)(i) - Certification

I, Gregory S. Maines, Professional Land Surveyor No. 2729, hereby certify that the corner location on this record was referenced by me or under my direction and control and that this U.S. Public Land Survey Monument Record is complete to the best of my knowledge and belief.

Index No.:

117

43413220039