

CERTIFIED LAND CORNER RESTORATION

Index No. **012**

State of Wisconsin }
County of Forest } ss.

History of original corner establishment:
Cedar stake set by Kimberly Clark.

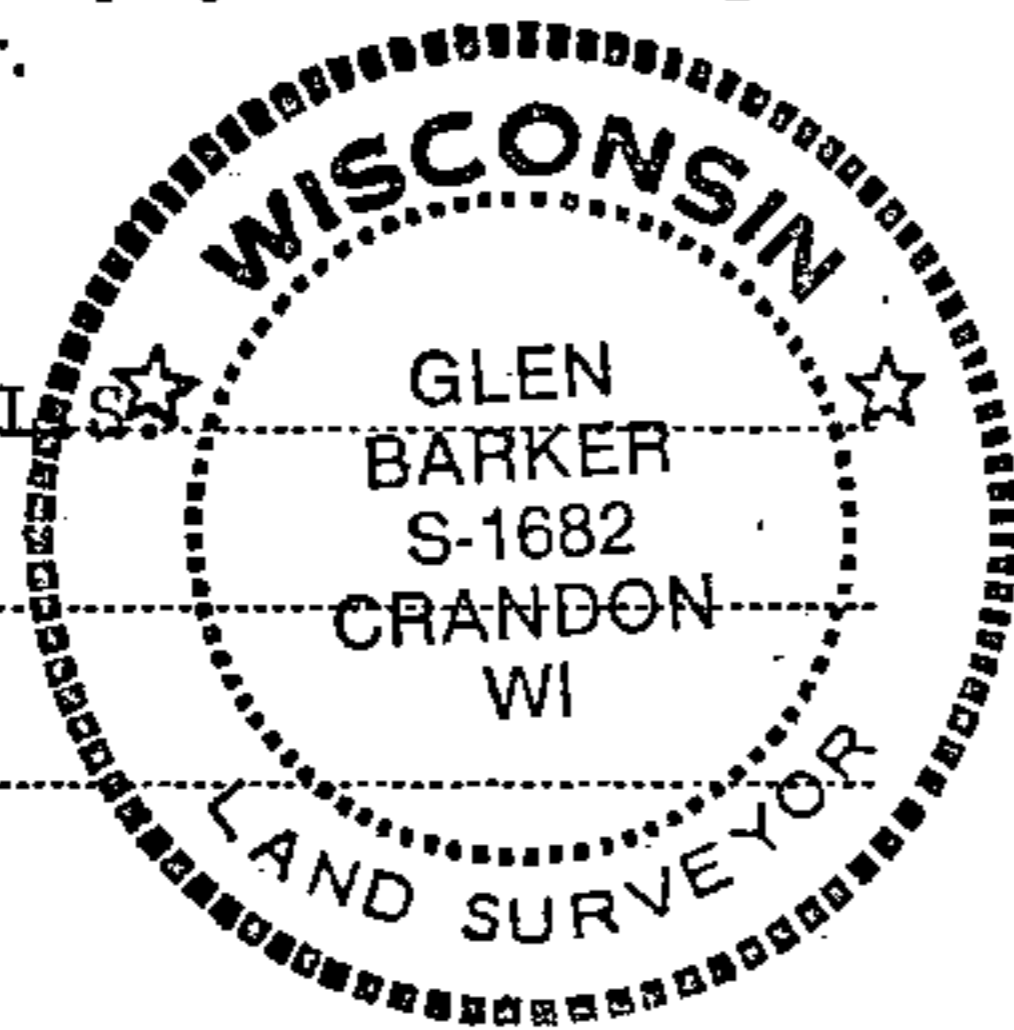
I Glen Barker, do hereby certify that on the 16th day of May, 19 83, I ~~found~~ found evidence of the NE 1/16 corner of Section 21 Township 34, North, Range 13 East, Fourth Principal Meridian, as described hereon; and that from this evidence I established a new monument and accessories as described hereon to perpetuate the original location of this corner.

Description of corner evidence found:
Corner established by subdivision of the NE 1/4.
NE 1/16 sets 1318.25 ft. of NC 1/16 and 1326.55 ft. of EC 1/16.

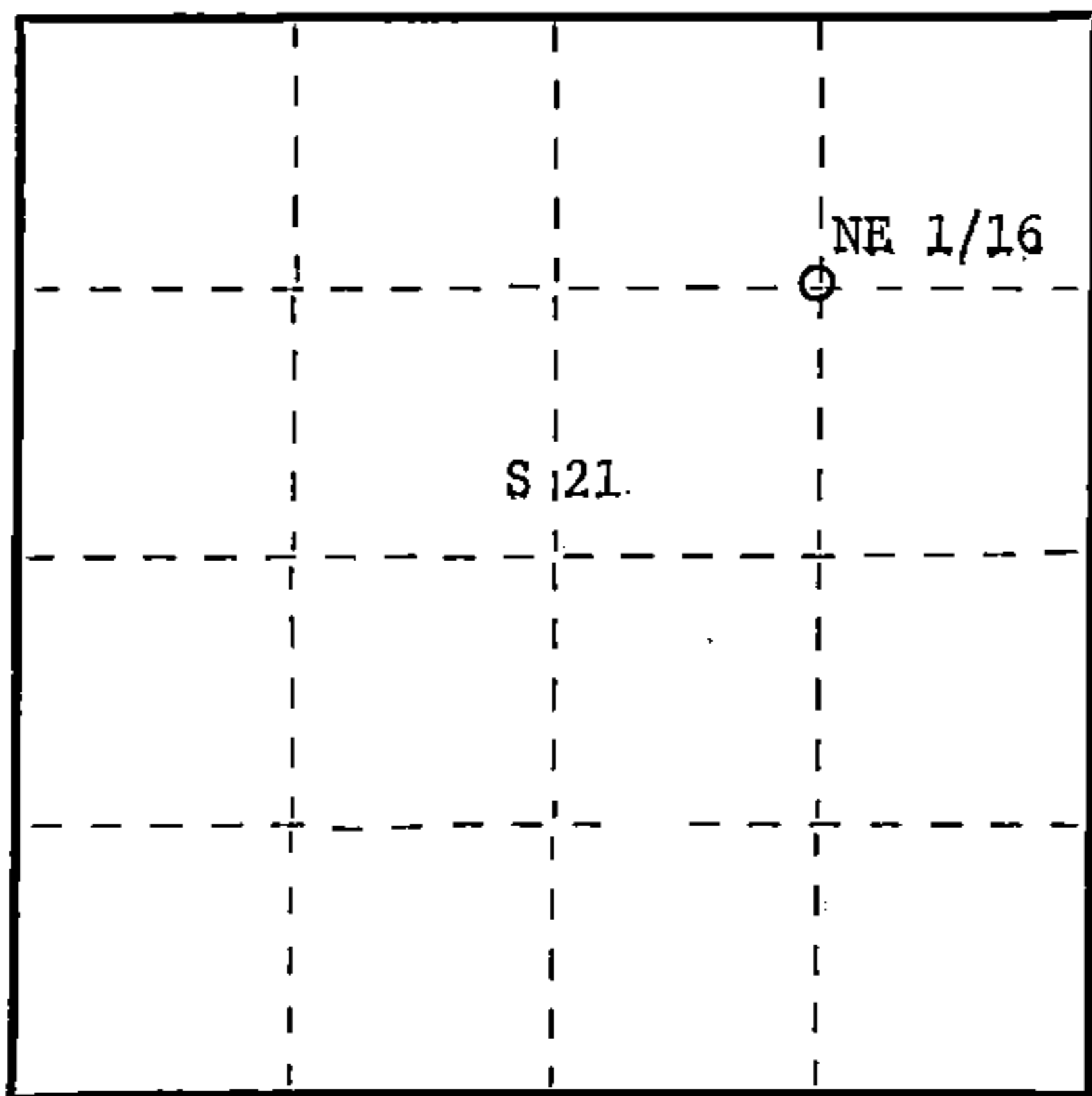
Resident witnesses:

J. Claflin - R. L.

H. Wagoner



T34N R13E



○ = Corner monument restored.

Description of monument and accessories I established to perpetuate the original location of this corner.
Set a 1" iron pipe with 2" diameter alloy cap stamped: S1682
Monument projects 12" above ground. T34N R13E

Marked NBTs:

White ash 7" N76W 4.22 ft. NE 1/16 S 21
Sugar 6" N17W 37.45 ft.
Scribed 1/16 - B.T. CPI - 1983

Dated at Rhineland, Wis., this 9th day of June, 19 83

Signature Glen Barker Title Registered Land Surveyor Registration No. S1682
(County Surveyor, Registered Land Surveyor, or other duly authorized official)

Office of Register of Deeds, County of Forest. I hereby certify that the within instrument was filed in this office for record on the 15th day of June, 19 83 at 2:00 o'clock P. M.

Eugene Stutzman
(Register of Deeds)
By..... Deputy

DOCUMENT NO. **123603**

Stock No. 26272

FORM 983

43413 213010