

157334

U.S. PUBLIC LAND SURVEY MONUMENT RECORD

(As Required By s. A-E 5.02, WI Adm. Code)

History of original corner establishment and subsequent restorations and description of any record, monument, occupational, testimonial or other evidence considered:

ORIGINAL SURVEY BY NOWLIN IN 1864, SET WOOD POST -B.Ts. W. PINE 18" N.82° W. 14 LKS., SPRUCE 6" S.65° E. 8 LKS. CORNER RESTABLISHED IN 1959, RECORDED PLAT OF BARTZ BAY-CONC. FILLED DRAIN PIPE. SAME CORNER USED IN 1976, RECORDED PLAT OF 2ND PLAT OF BARTZ BAY 1996 W.G. DOBBRATZ, R.L.S. NO. S -973, FOUND CONC. FILLED DRAIN PIPE AS PER RECORDED PLATS AT MEANDER CORNER.

Corner was: (Check All That Apply)

- Restored through acceptance of an obliterated evidence location
Restored through acceptance of a found perpetuated location
Considered a lost corner and reestablished through lost corner proportionate methods
Restored or reestablished in a location that differs from a previous restoration

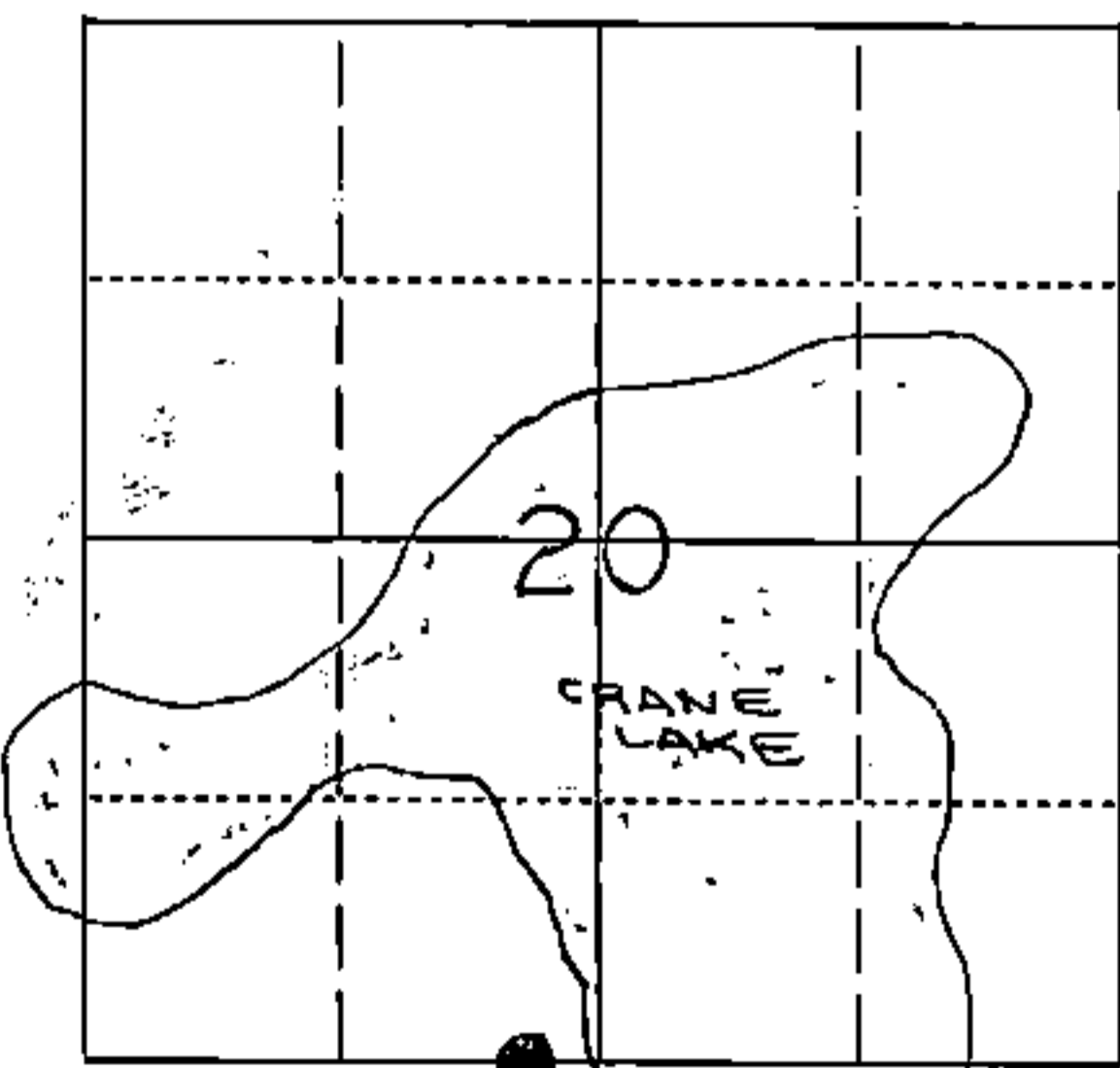
Describe the monument and accessories used to perpetuate the location of this corner. (include a plan view drawing and indicate what was set and/or found)

WITNESS

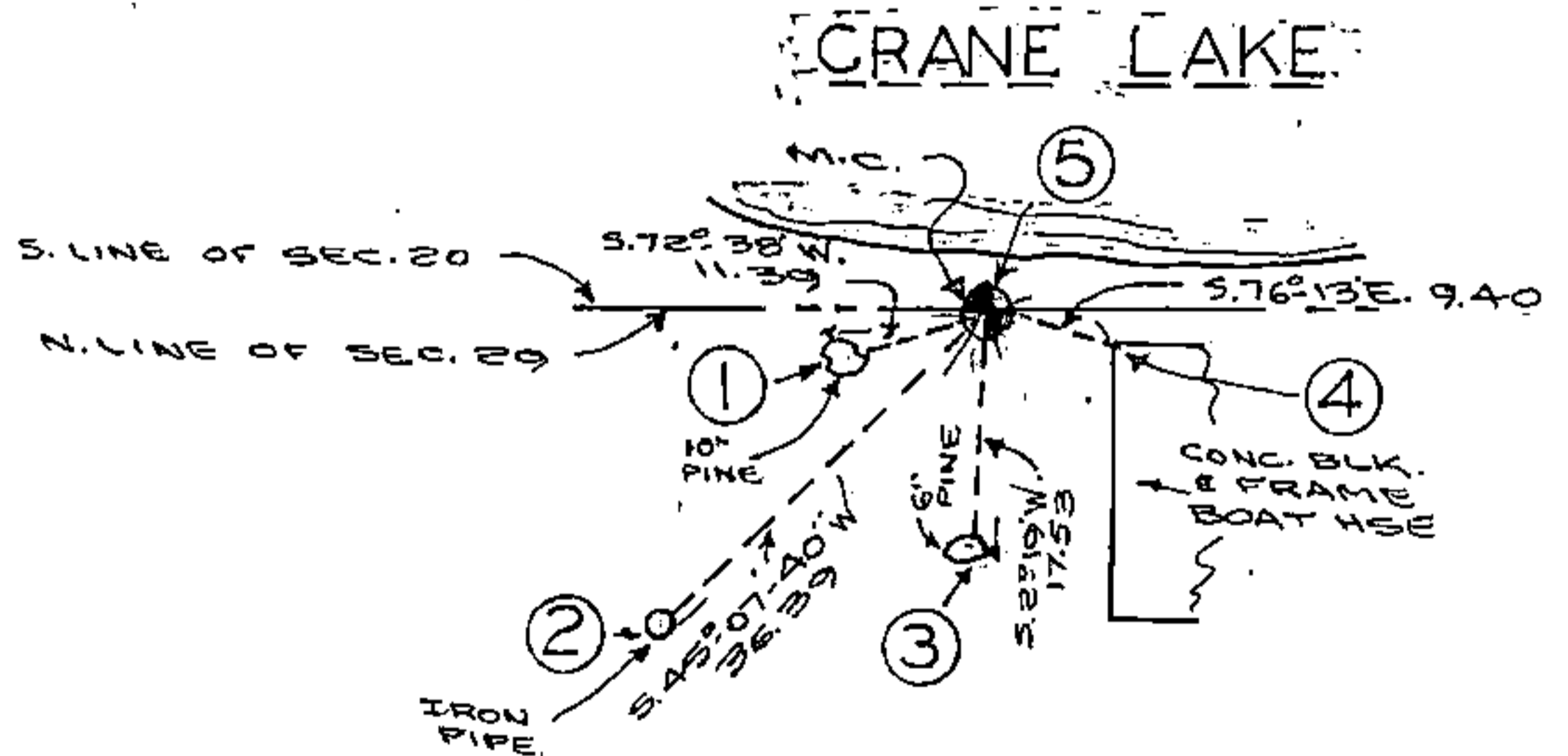
- 1. DROVE 60 P. NAIL IN N'LY. FACE OF 10" PINE
2. FOUND 1" DIA. IRON PIPE
3. DROVE 60 P. NAIL IN E'LY FACE OF 6" PINE
4. NW CORNER OF CONC. BLOCK BOAT HSE.
5. SET 2" DIA. ALUMINUM MONUMENT WITH CAP STAMPED TO IDENTIFY CORNER.

The WEST MEANDER CORNER

corner of Section 20 & 29, T. 34 N., R. 13 E., Fourth Principal Meridian, Marinette County, Wisconsin



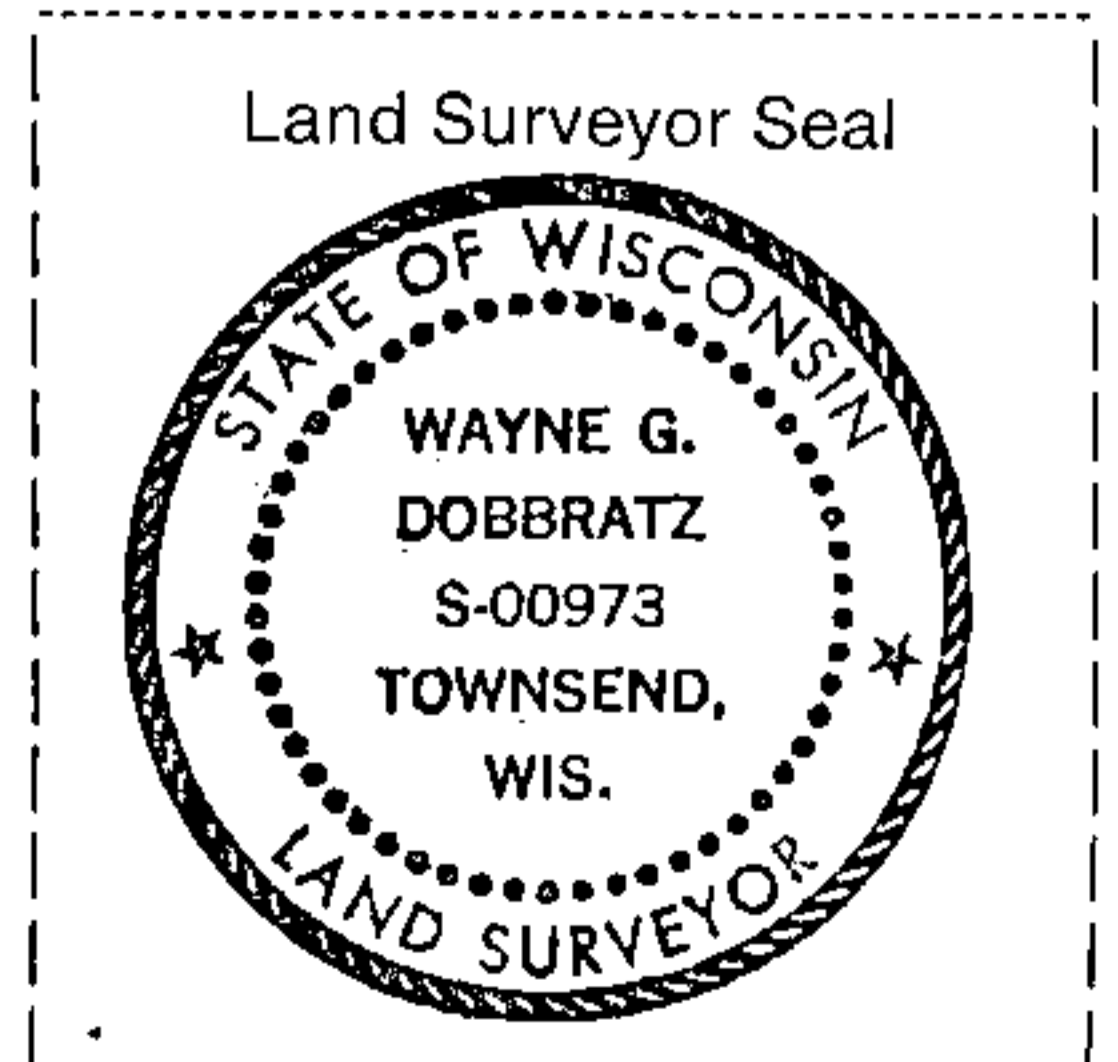
● = Location of Corner



REGISTER'S OFFICE Forest County, Wis.

Received for record this 15th day of June, A.D. 1996 at 2:50 o'clock A.M. and recorded in Vol. 34-13-R-7 page 34-13-R-7

Wayne G. Dobbratz, Register of Deeds, Deputy



Wayne G. Dobbratz (type or print name) certify that the corner location shown on this record was determined by me or under my direction and control and that this U.S. Public Land Survey Monument Record is correct and complete to the best of my knowledge and belief.

Signature of Wayne G. Dobbratz

Date 11/15/96

Index No. R-7 W.M.C.

43413200022