

CERTIFIED LAND CORNER RESTORATION

Index No. M-9

State of Wisconsin }
County of Forest } ss.

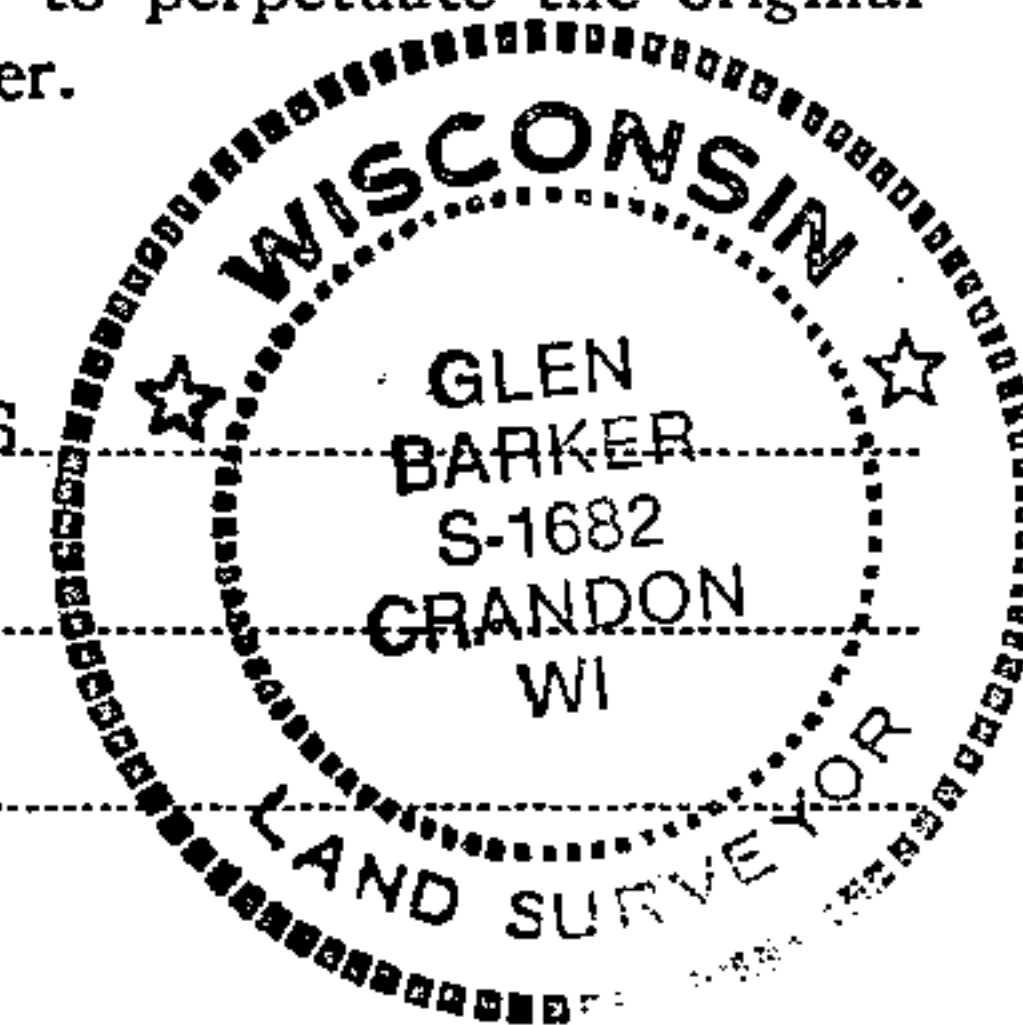
History of original corner establishment:
No evidence of any previous corner.

I Glen Barker, do hereby
certify that on the 21st day
of September, 1983, I ~~found~~ Estab.
~~corner of the~~ S 1/16
corner of Sections 16 & 17
Township 34, North, Range
13 East, Fourth Principal Meridian,
as described hereon; and that from this evidence
I established a new monument and accessories
as described hereon to perpetuate the original
location of this corner.

Resident witnesses:

J. Claflin - RLS

H. Wagoner



Description of corner evidence found:
Total distance from Section corner 16-17-20-21 to 1/4 corner between Sections 16 & 17
is 2605.18 ft.
Set S 1/16 1302.59 ft. intermediate.

Description of monument and accessories I established to perpetuate the original location of this corner.

Set a 1" iron pipe with 2" diameter alloy cap stamped: S1682

Marked NBTs. T34N R13E

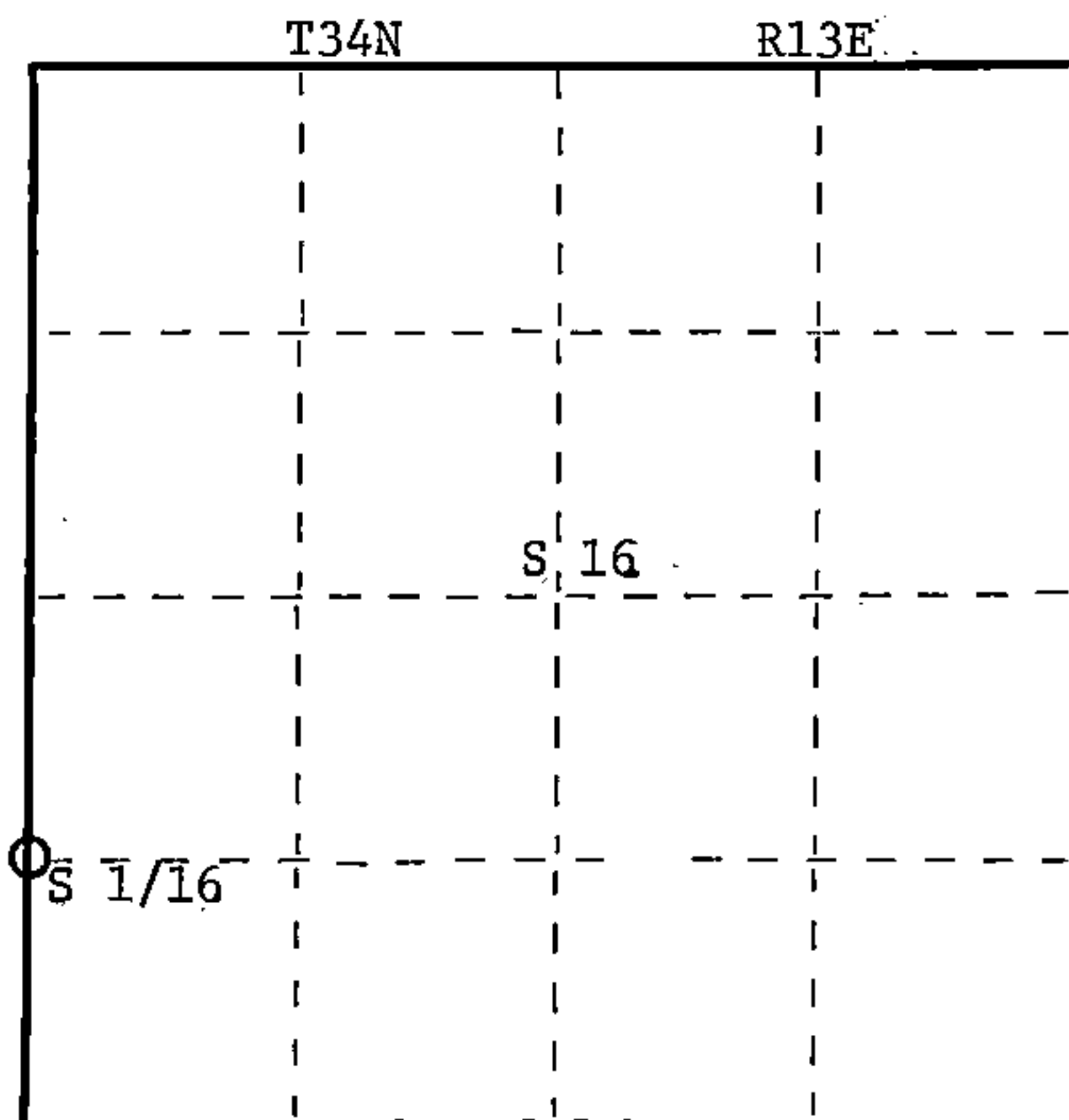
Sugar 6" N88W 39.45 ft.

Sugar 5" S30W 26.40 ft.

Scribed 1/16 B.T.

S 1/16 17 16

CPI - 1983



○ = Corner monument restored.

Dated at Rhineland, Wis., this 23rd day of September, 1983.

Signature Glen Barker Title Registered Land Surveyor Registration No. S1682
(County Surveyor, Registered Land Surveyor, or other duly authorized official)

Office of Register of Deeds, County of Forest, I hereby certify that the within
instrument was filed in this office for record on the 13th day of December, 1983
at 10:30 o'clock A. M.

Eugene Staszny
(Register of Deeds)
By _____ Deputy

DOCUMENT NO. **124859**

Stock No. 26272

H.C. Miller Company
Surveyors, Wisconsin

FORM 985

43413171000