

CERTIFIED LAND CORNER RESTORATION

Index No. K-12-12

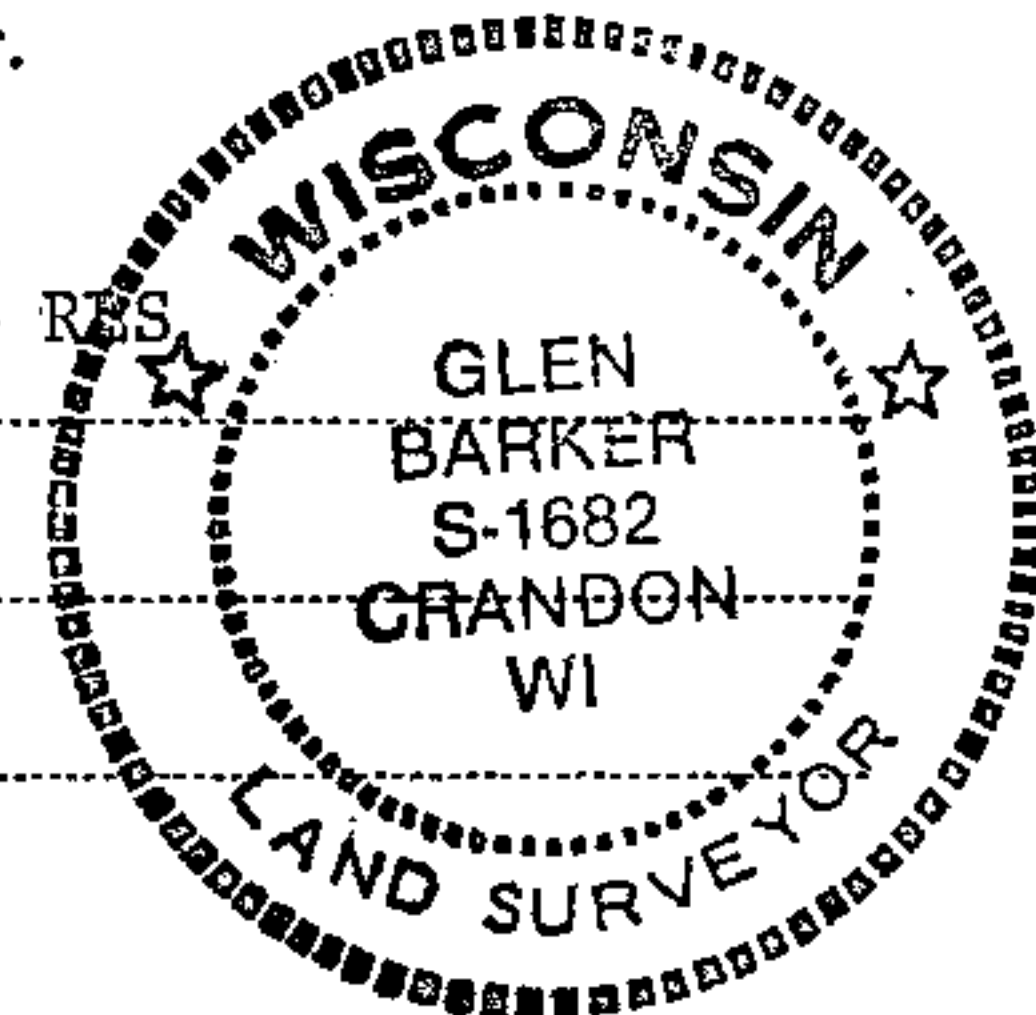
State of Wisconsin }
County of Forest } ss.

I Glen Barker, do hereby
certify that on the 23rd day
of September, 1983, I found
~~evidence of the~~ NE 1/4
corner of Section 16
Township 34, North, Range
13 East, Fourth Principal Meridian,
as described hereon; and that from this evidence
I established a new monument and accessories
as described hereon to perpetuate the original
location of this corner.

Resident witnesses:

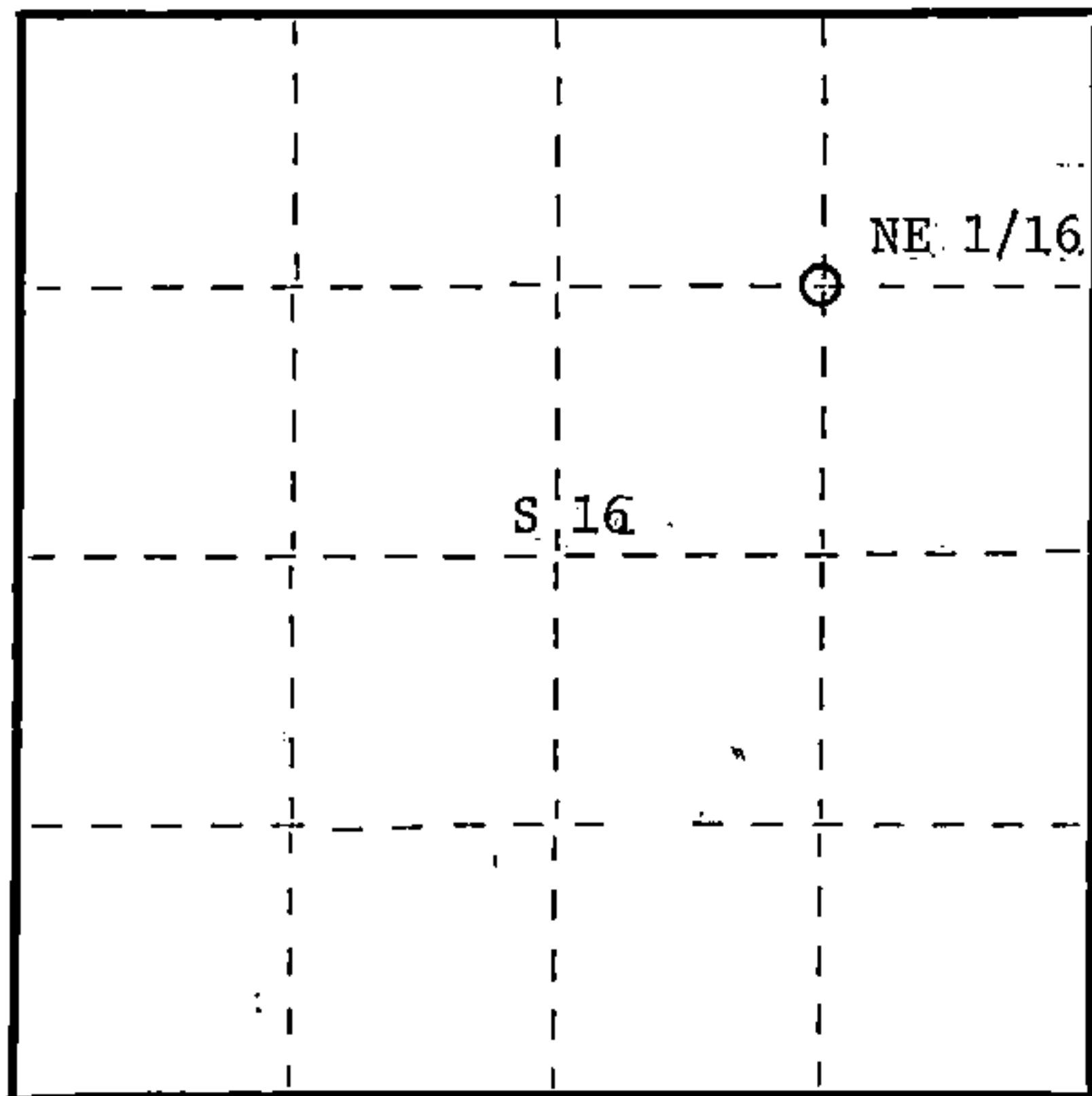
J. Claflin - RES

H. Wagoner



T34N

R13E



○ = Corner monument restored.

History of original corner establishment:

3" squared cedar post by Kimberly Clark not of record.

Description of corner evidence found:

Corner established by subdivision of the NE 1/4.

Location of NE 1/16 is 1330.68 ft. of EC 1/16 and 1314.91 ft. of NC 1/16.

Description of monument and accessories I established to perpetuate the original location of this corner.

Set a 1" iron pipe with 2" diameter alloy cap stamped:

Marked NBTs.

Sugar 10" N38E 31.81 ft.

Sugar 10" S10W 10.85 ft.

Scribed 1/16 - B.T.

S1682

T34N R13E

NE 1/16 S 16

CPI - 1983

Dated at Rhineland, Wis., this 23rd day of November, 1983.

Signature Glen Barker Title Registered Land Surveyor Registration No. S1682
(County Surveyor, Registered Land Surveyor, or other duly authorized official)

Office of Register of Deeds, County of Forest, I hereby certify that the within
instrument was filed in this office for record on the 13th day of December, 1983
at 10:30 o'clock A. M.

Eugene Staszny
(Register of Deeds)

DOCUMENT NO. **124855**

By _____ Deputy

Stock No. 26272

H.C. Miller Company
Surveyors, Wisconsin

FORM 985

43413163010