

CERTIFIED LAND CORNER RESTORATION

Index No. L-10 **10**

State of Wisconsin }
County of Forest } ss.

History of original corner establishment:
No evidence of any previous corner.

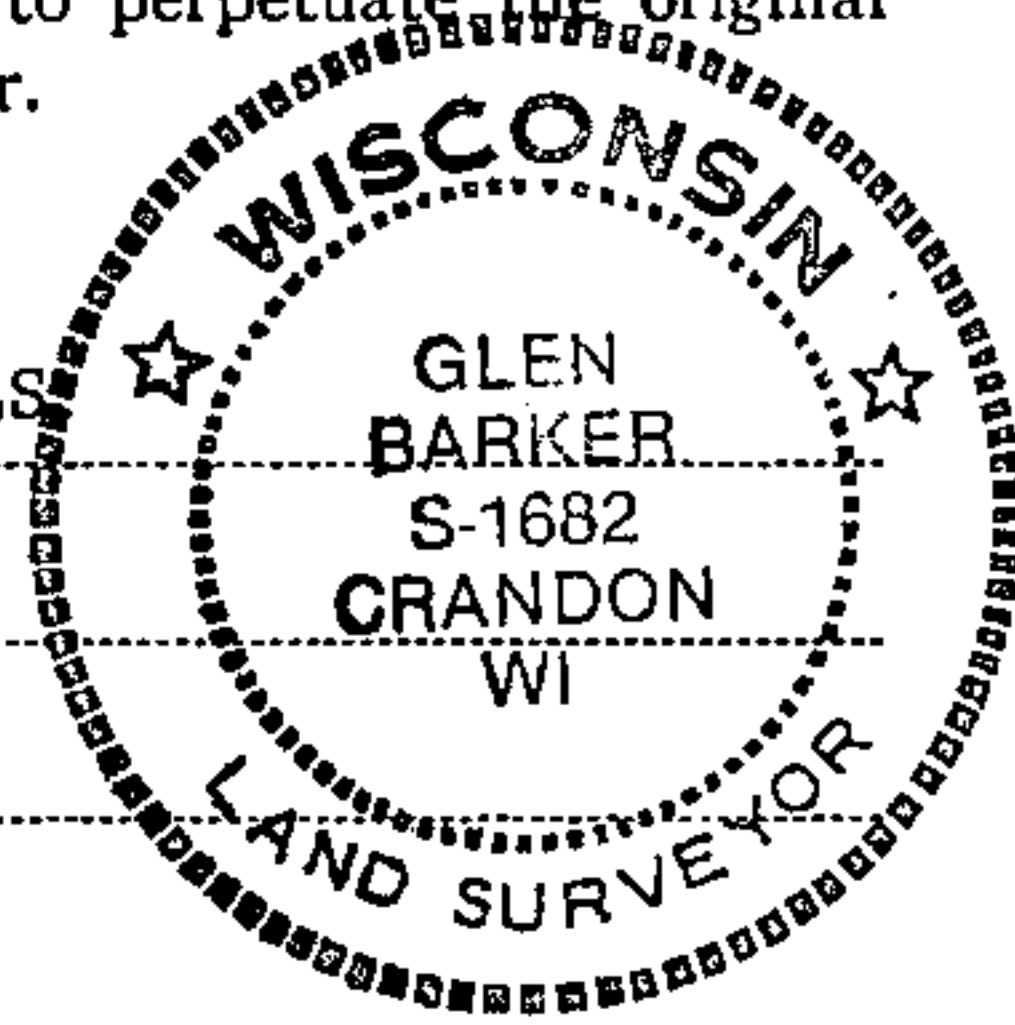
I, Glen Barker, do hereby
certify that on the 23rd day
of September, 1983, ~~XXXX~~ found Estab.
evidence of the WC 1/16
corner of Section 16
Township 34, North, Range
13 East, Fourth Principal Meridian,
as described hereon; and that from this evidence
I established a new monument and accessories
as described hereon to perpetuate the original
location of this corner.

Description of corner evidence found:
Total distance from 1/4 corner between Sections 16 & 17 to C 1/4 Section 16 is 2558.30 ft.
Set WC 1/16 1279.15 ft. intermediate.

Resident witnesses:

J. Claflin - RLS

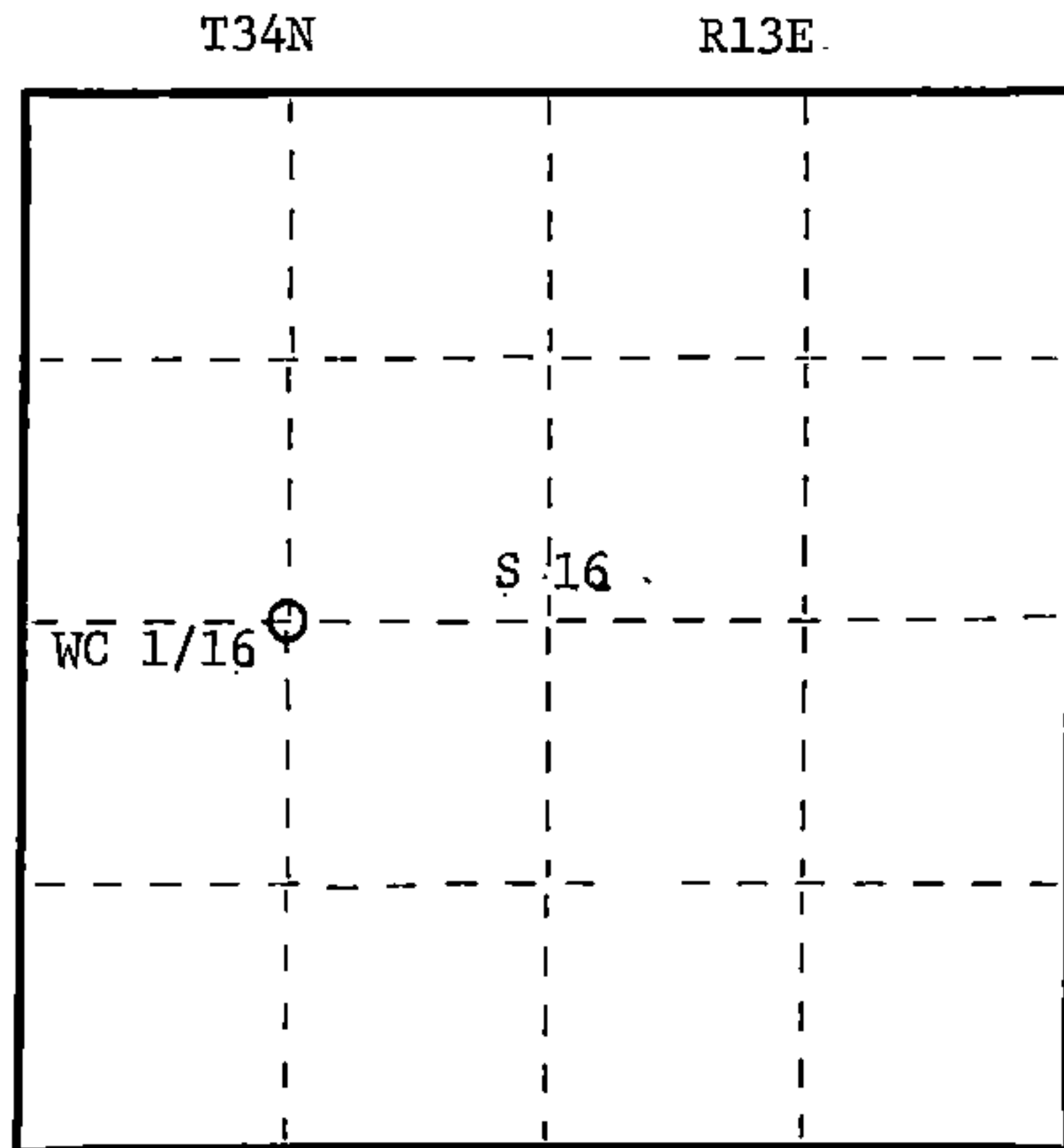
H. Wagoner



Description of monument and accessories I established to perpetuate the original location of this corner.

Set a 1" iron pipe with 2" diameter alloy cap stamped: S1682
Monument projects 12" above ground. T34N R13E
Marked NBTs WC 1/16^S 16
Maple 8" N30E 12.76 ft. CPI - 1983
Red oak 10" N50W 12.91 ft.
Scribed 1/16 - B.T.

Stock No. 26272
FORM 985
H.C. Miller Company



○ = Corner monument restored.

Dated at Rhineland, Wis., this 23rd day of November, 1983

Signature Glen Barker Title Registered Land Surveyor Registration No. S1682
(County Surveyor, Registered Land Surveyor, or other duly authorized official)

Office of Register of Deeds, County of Forest, I hereby certify that the within
instrument was filed in this office for record on the 13th day of December, 1983
at 10:30 o'clock A. M.

Eugene Stearns
(Register of Deeds)
By _____ Deputy

DOCUMENT NO. **124856**

43413162930