

CERTIFIED LAND CORNER RESTORATION

Index No. 20-11

**W I**

State of Wisconsin }  
County of Forest } ss.

History of original corner establishment:  
No evidence of any previous corner.

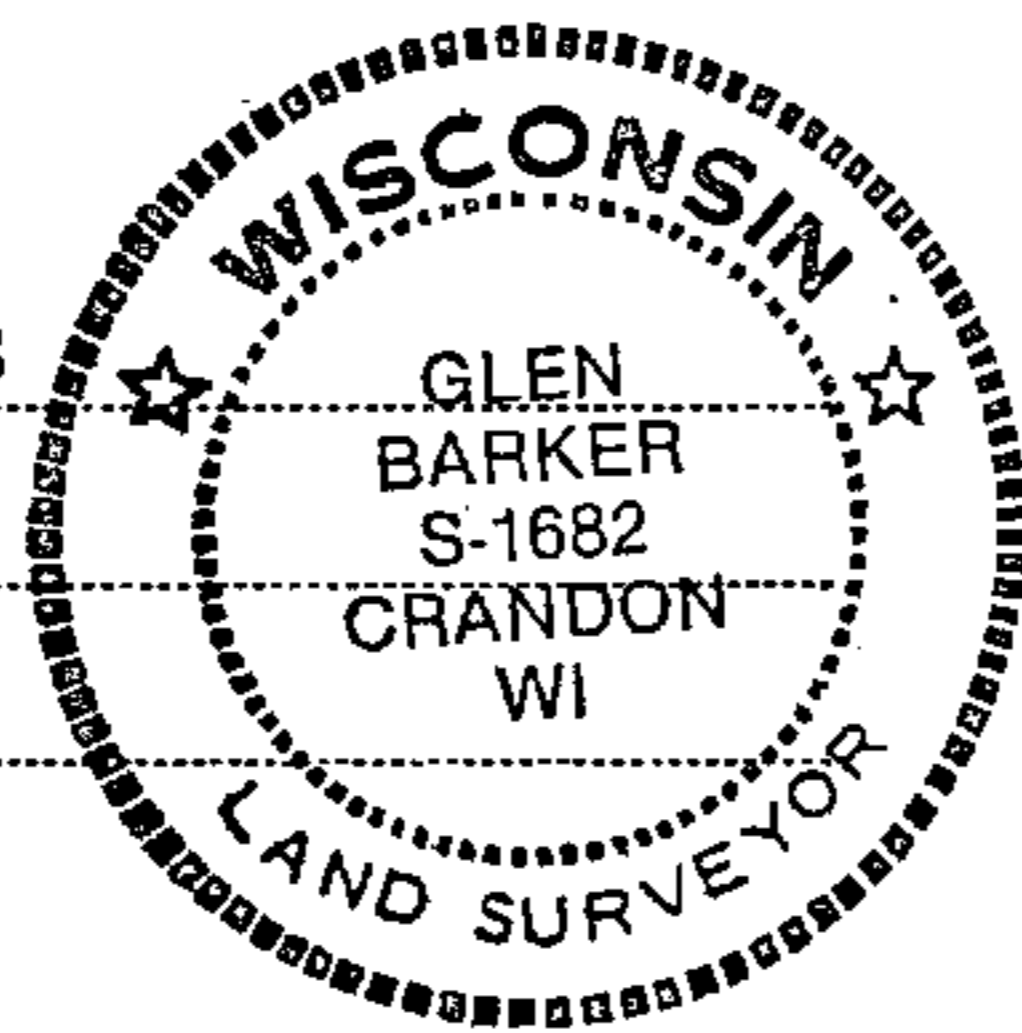
I Glen Barker, do hereby certify that on the 26th day of September, 1983, I took evidence of the SC 1/16 corner of Section 16 Township 34, North, Range 13 East, Fourth Principal Meridian, as described hereon; and that from this evidence I established a new monument and accessories as described hereon to perpetuate the original location of this corner.

Description of corner evidence found:  
Total distance from 1/4 corner between Sections 16 & 21 to C 1/4 Section 16 is 2637.04 ft.  
Set SC 1/16 1318.52 ft. intermediate.

Resident witnesses:

J. Claflin - RLS

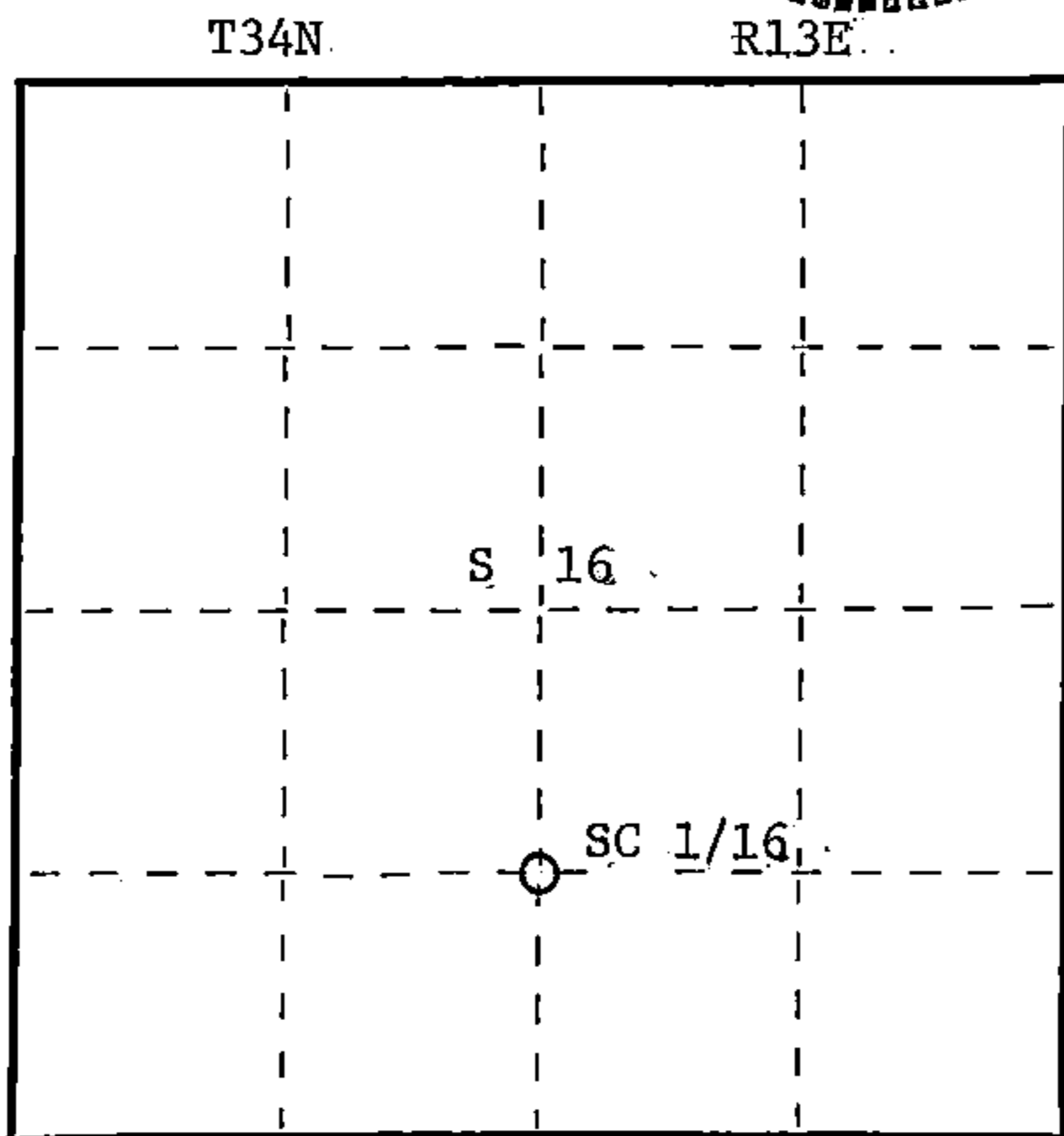
H. Wagoner



Description of monument and accessories I established to perpetuate the original location of this corner.  
Set a 1" iron pipe with 2" diameter alloy cap stamped: S1682  
Monument projects 18" above ground. T34N R13E  
Marked NBTs: SC 1/16 S 16

Sugar 6" S48W 49.77 ft.  
Sugar 6" S89E 27.44 ft.  
Scribed 1/16 - B.T. CPI - 1983

Stock No. 26272  
FORM 985  
H.C. Miller Company  
Madison, Wisconsin



○ = Corner monument restored.

Dated at Rhinelander, Wis., this 23rd day of November, 1983

Signature Glen Barker Title Registered Land Surveyor Registration No. S1682  
(County Surveyor, Registered Land Surveyor, or other duly authorized official)

Office of Register of Deeds, County of Forest, I hereby certify that the within instrument was filed in this office for record on the 13th day of December, 1983 at 10:30 o'clock A. M.

Luzanne Stutzman (Register of Deeds)  
By \_\_\_\_\_ Deputy  
DOCUMENT NO. **124860**

43413161020