

CERTIFIED LAND CORNER RESTORATION

Index No. K-22

K 22

State of Wisconsin }
County of Forest } ss.

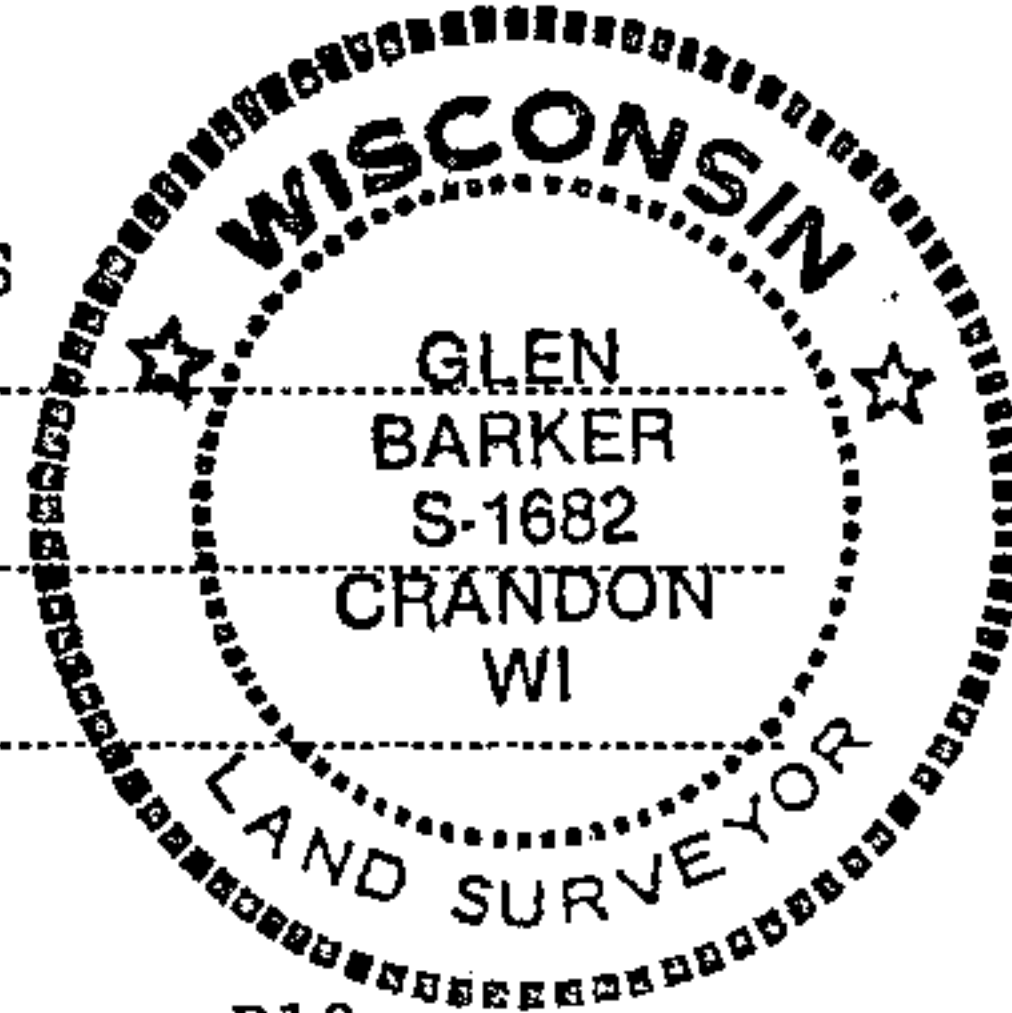
History of original corner establishment:
No evidence of any previous corner.

I Glen Barker, do hereby
certify that on the 10th day
of Sept., 19 82, I ~~found~~ found Est.
~~evidence of the~~ NW 1/16
corner of Section 13
Township 34, North, Range
13 East, Fourth Principal Meridian,
as described hereon; and that from this evidence
I established a new monument and accessories
as described hereon to perpetuate the original
location of this corner.

Description of corner evidence found:

Corner established by subdivision of the NW 1/4. Location of NW 1/16 is N89-37-21W
1267.96 ft. of NC 1/16 and NO-36-28E 1300.48 ft. of WC 1/16.

Resident witnesses:
Jim Claflin - RLS
H. Wagoner



Description of monument and accessories I established to perpetuate the original location of this corner.

Set a 1" iron pipe with 2" diameter alloy cap stamped:

S1682

Monument projects 18" above ground.

T34N R13E

Marked NBTs:

White spruce 5" N20E 54.85 ft.

S 13

Bl. Cherry 7" N61E 41.0 ft.

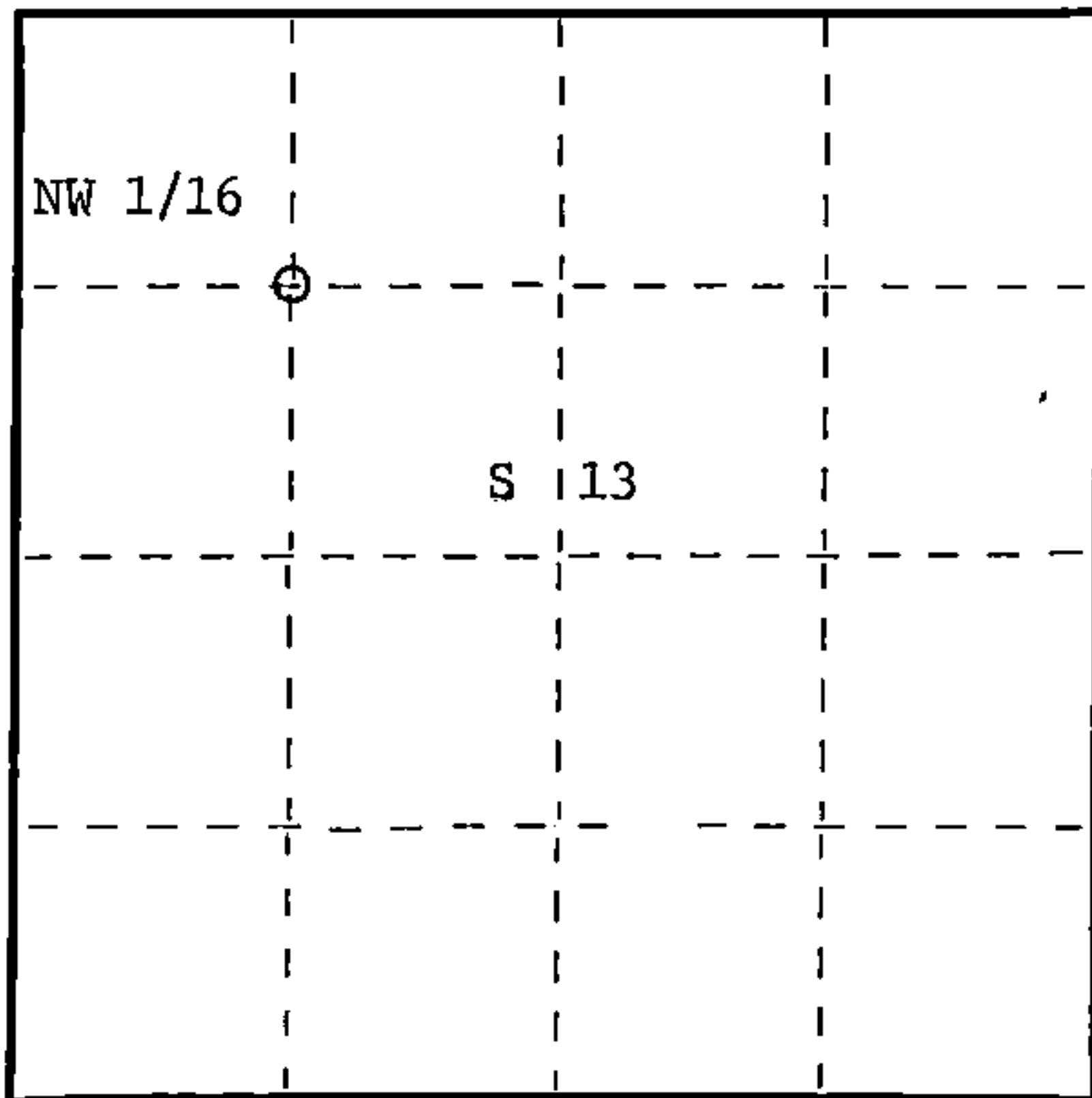
NW 1/16

Scribed 1/16 - B.T.

CPI - 1982

T34N

R13



○ = Corner monument restored.

Dated at Rhineland, Wis., this 30th day of December, 19 82.

Signature Glen Barker Title Registered Land Surveyor Registration No. S1682
(County Surveyor, Registered Land Surveyor, or other duly authorized official)

Office of Register of Deeds, County of Forest, I hereby certify that the within
instrument was filed in this office for record on the 16th day of February, 19 82
at 10:30 clock A. M.

Eugene Stutzman
(Register of Deeds)

DOCUMENT NO.

122900

By _____ Deputy

FORM 985 H. C. MILLER CO., MILWAUKEE

1143413133030