

CERTIFIED LAND CORNER RESTORATION

Index No. KE-25  
**K 25**

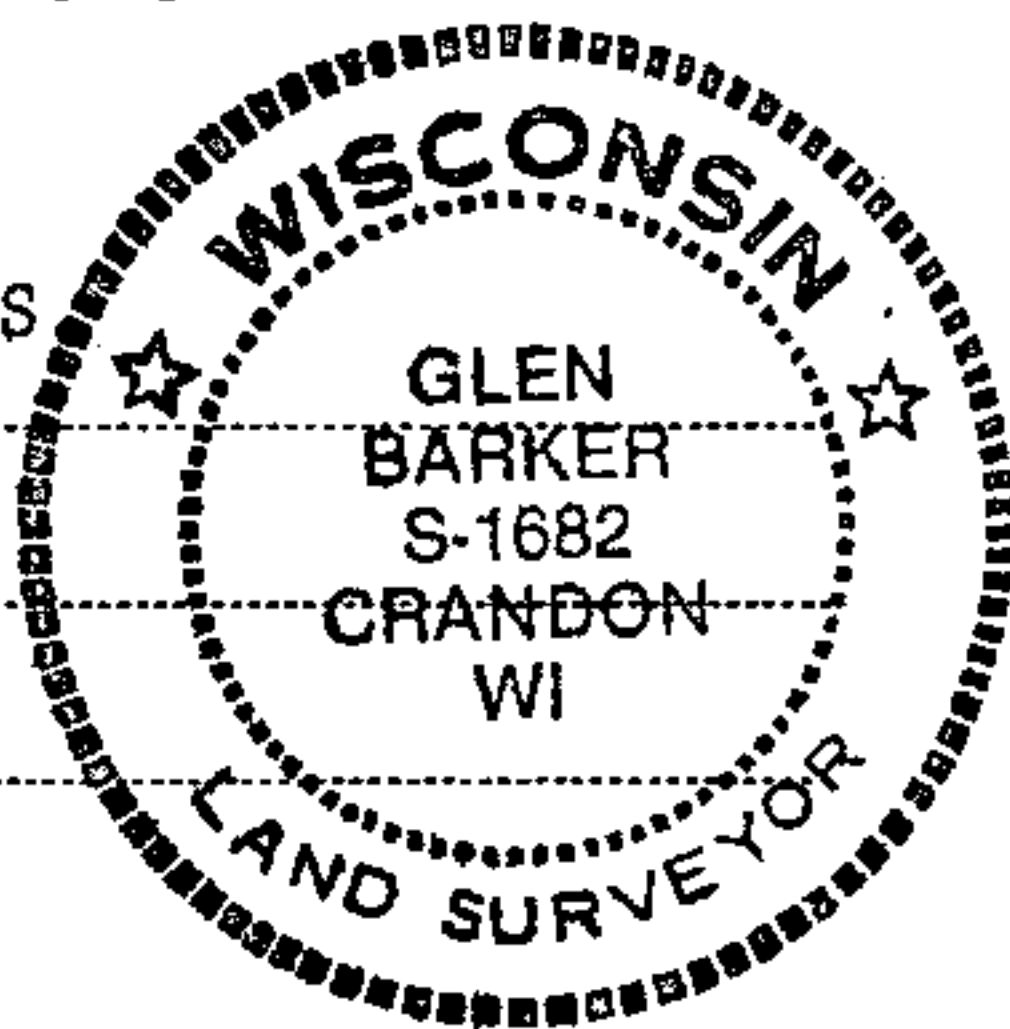
State of Wisconsin }  
County of Forest } ss.

History of original corner establishment:  
No evidence of any previous survey.

I Glen Barker, do hereby certify that on the 13th day of September, 19 82, I ~~found~~ ~~found~~ evidence of the N1/16 corner of Sections 13 & 18 Township 34, North, Range 13 & 14 East, Fourth Principal Meridian, as described hereon; and that from this evidence I established a new monument and accessories as described hereon to perpetuate the original location of this corner.

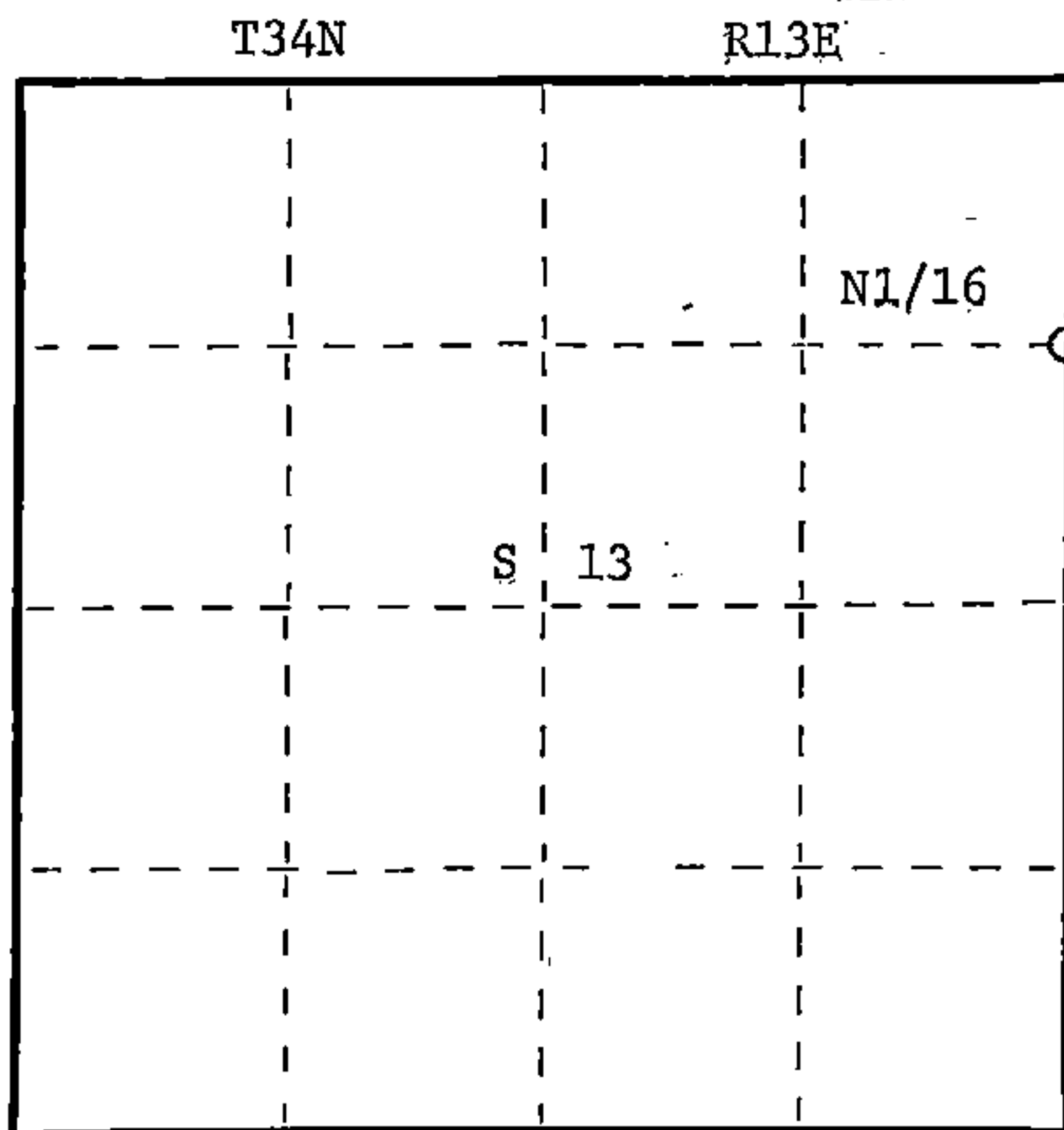
Description of corner evidence found:  
Total distance from section corner 12-13-7-18 T34N R13 & 14E to 1/4 corner between sections 13 & 18 is 2637.22 ft. at bearing S1-18-10W.  
Set N1/16 1318.61 intermediate.

Resident witnesses:  
Jim Claflin - RLS  
H. Wagoner



Description of monument and accessories I established to perpetuate the original location of this corner.  
Set a 1" iron pipe with 2" diameter alloy cap stamped: S1682  
T34N R13E  
N1/16 13 18 -  
CPI - 1982  
Monument projects 12" above ground.  
Marked NBTs:  
Sugar 6" N14W 16.75 ft.  
Sugar 5" S48W 12.33 ft.  
Scribed 1/16 - B.T.

FORM 985 R. C. MILLER CO., MILWAUKEE



○ = Corner monument restored.

Dated at Rhineland, Wis., this 30th day of December, 19 82.

Signature Glen Barker Title Registered Land Surveyor Registration No S1682  
(County Surveyor, Registered Land Surveyor, or other duly authorized official)

Office of Register of Deeds, County of Forest, I hereby certify that the within instrument was filed in this office for record on the 16th day of February, 19 83 at 10:30 o'clock A. M.

Eugene Statelyny  
(Register of Deeds)  
By \_\_\_\_\_ Deputy

DOCUMENT NO. **122903**

43413133000