

CERTIFIED LAND CORNER RESTORATION

Index No. L-23

[23

State of Wisconsin }
County of Forest } ss.

History of original corner establishment:
No evidence of any previous corner.

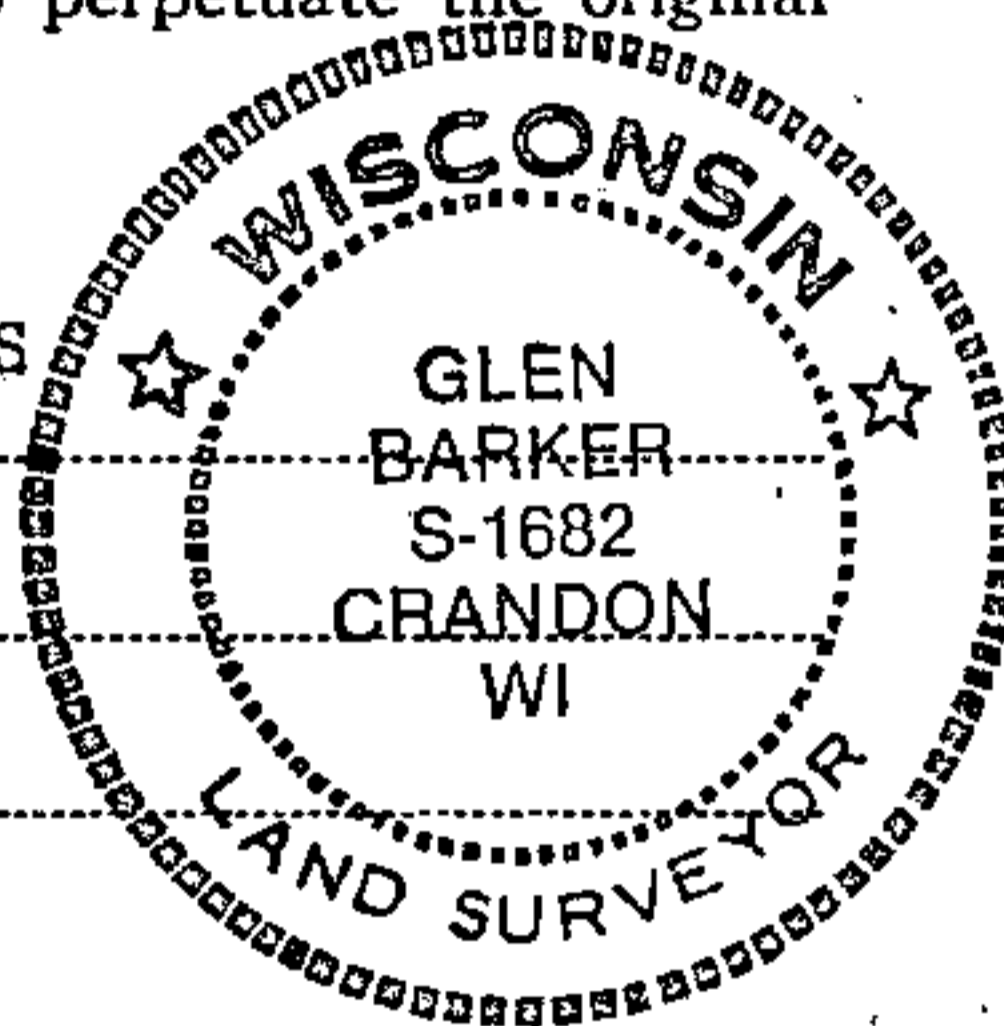
I Glen Barker, do hereby
certify that on the 8th day
of September, 19 82, I ~~found~~
~~evidence of the~~ C1/4
corner of Section 13
Township 34, North, Range
13 East, Fourth Principal Meridian,
as described hereon; and that from this evidence
I established a new monument and accessories
as described hereon to perpetuate the original
location of this corner.

Description of corner evidence found:
Corner established by subdivision of section 13 T34N R13E.
Corner sets S0-51-00W 2611.52 ft. of N1/4 corner N89-23-03W 2531.20 ft. of E1/4
corner, N0-51-00E 2640.34 ft. of S1/4 corner and S89-23-03E 2524.84 ft. of W1/4 corner.

Resident witnesses:

J. Claflin - RLS

H. Wagoner



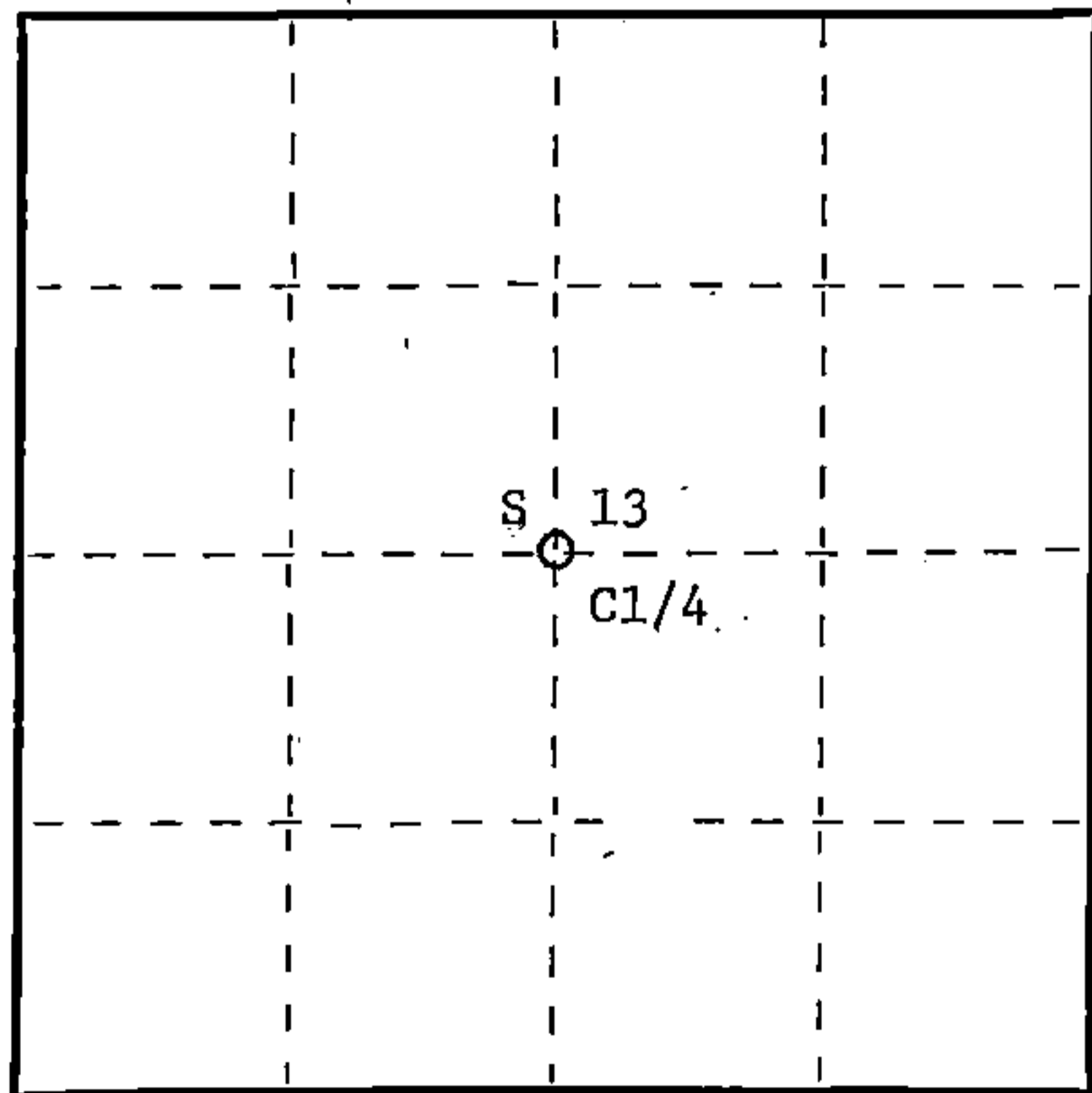
Description of monument and accessories I established to perpetuate the original location of this corner.
Set a 2 1/2" aluminum pipe with alloy cap stamped: S1682
Monument projects 12" above ground. T34N R13E
Marked NBTs: S 13

White ash 8" S81W 9.52 ft.
Sugar 7" N88E 4.32 ft.
Sugar 5" S14E 5.68 ft.
Scribed C1/4 - B.T.

CPI - 1982

FORM 985 H. C. MILLER CO., MILWAUKEE

T34N R13E



○ = Corner monument restored.

Dated at Rhineland, Wis., this 30th day of December, 19 82.

Signature Glen Barker Title Registered Land Surveyor Registration No. S1682
(County Surveyor, Registered Land Surveyor, or other duly authorized official)

Office of Register of Deeds, County of Forest I hereby certify that the within
instrument was filed in this office for record on the 16th day of February, 19 83
at 10:30 o'clock A. M.

Eugene Staszny
(Register of Deeds)
By _____ Deputy

DOCUMENT NO. **122905**

43413132020