

CERTIFIED LAND CORNER RESTORATION

Index No. 7-9112

9 9/2

State of Wisconsin }
County of Forest } ss.

History of original corner establishment:
No evidence of any previous corner.

I Glen Barker, do hereby certify that on the 21st day of September, 19 83, I found evidence of the East M.C. corner of Sections 9 & 16 St Johns Lake Township 34, North, Range 13 East, Fourth Principal Meridian, as described hereon; and that from this evidence I established a new monument and accessories as described hereon to perpetuate the original location of this corner.

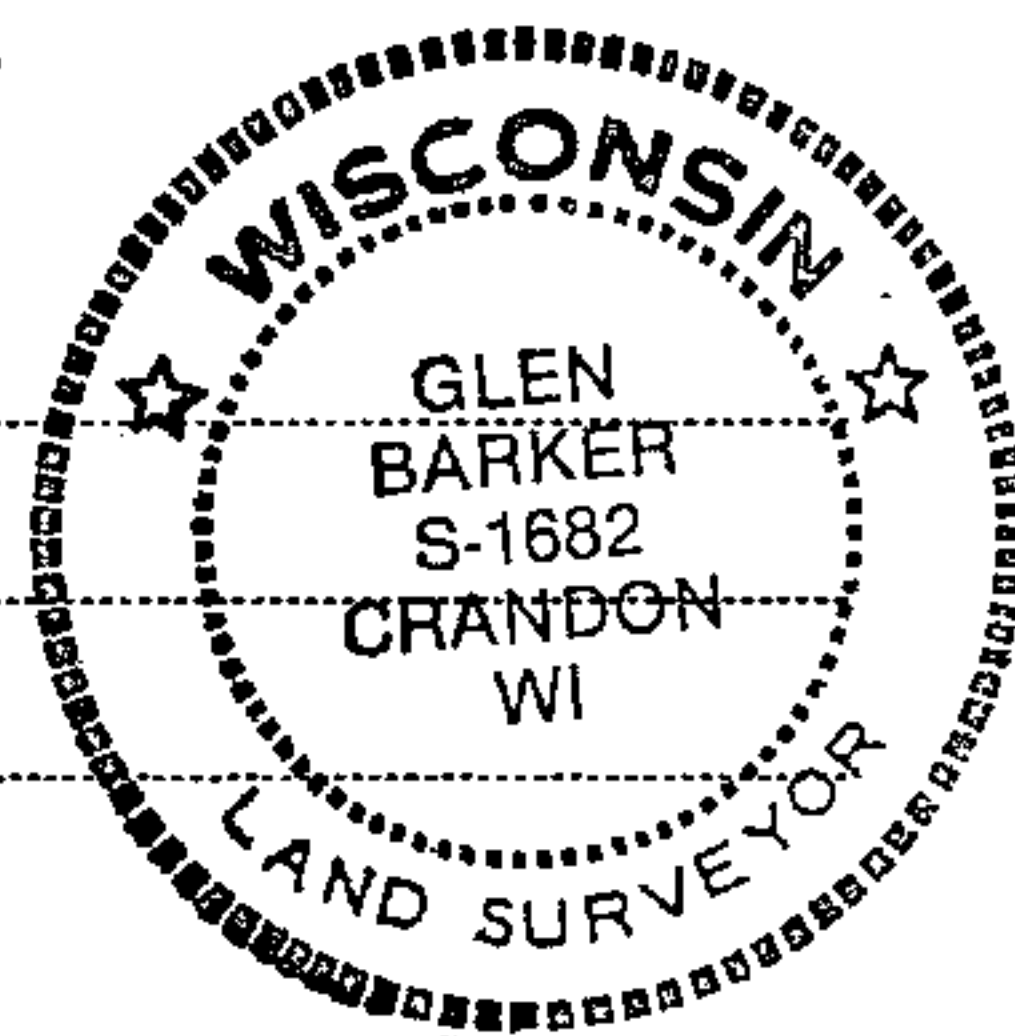
Description of corner evidence found:

Set east meander corner on east shore of St. Johns Lake 20.0 ft. of waters edge - on a straight line between Section corner 8-9-16-17 and 1/4 corner between Sections 9 & 16. Corner sets 790.0 ft. of Section corner and 1785.48 ft. of 1/4 corner.

Resident witnesses:

J. Claflin - RLS

H. Wagoner

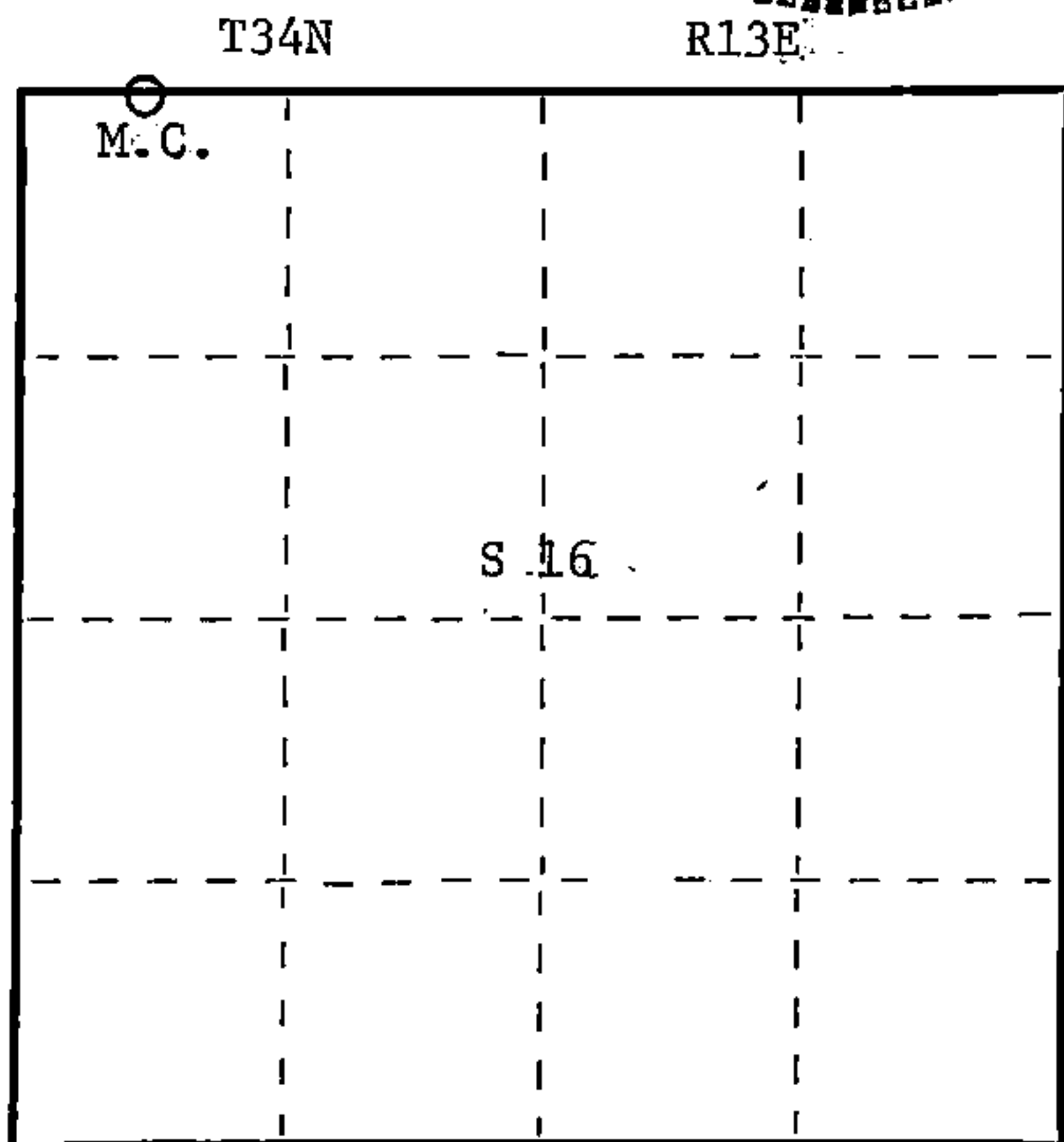


Description of monument and accessories I established to perpetuate the original location of this corner.

Set a 1" x 48" iron pipe for M.C.

Marked NBTs

- Black spruce 6" N40E 11.71 ft.
- White pine 6" S80E 16.10 ft.
- Scribed M.C. - B.T.



○ = Corner monument restored.

Dated at Rhinelander, Wis., this 23rd day of November, 19 83.

Signature Glen Barker Title Registered Land Surveyor Registration No. S1682
(County Surveyor, Registered Land Surveyor, or other duly authorized official)

Office of Register of Deeds, County of Forest, I hereby certify that the within instrument was filed in this office for record on the 13th day of December, 19 83 at 10:30 o'clock A. M.

Eugene Staremy
(Register of Deeds)
By _____ Deputy

DOCUMENT NO. **124852**

Stock No. 26272

H.C. Miller Company

FORM 985

43413090045