

CERTIFIED LAND CORNER RESTORATION

Index No. 711

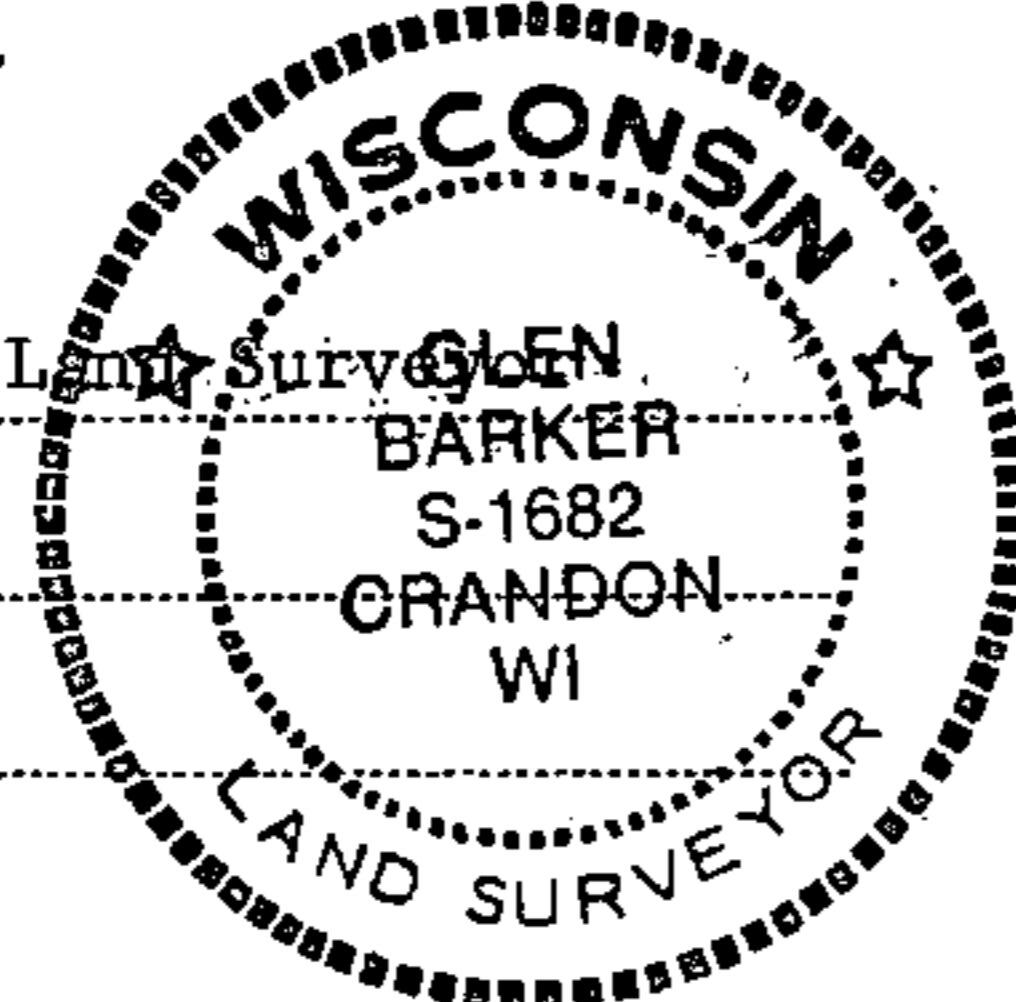
State of Wisconsin }  
County of Forest } ss.

I Glen Barker, do hereby certify that on the 25th day of May, 1983, I found evidence of the Quarter corner of Sections 9 and 16 Township 34, North, Range 13 East, Fourth Principal Meridian, as described hereon; and that from this evidence I established a new monument and accessories as described hereon to perpetuate the original location of this corner.

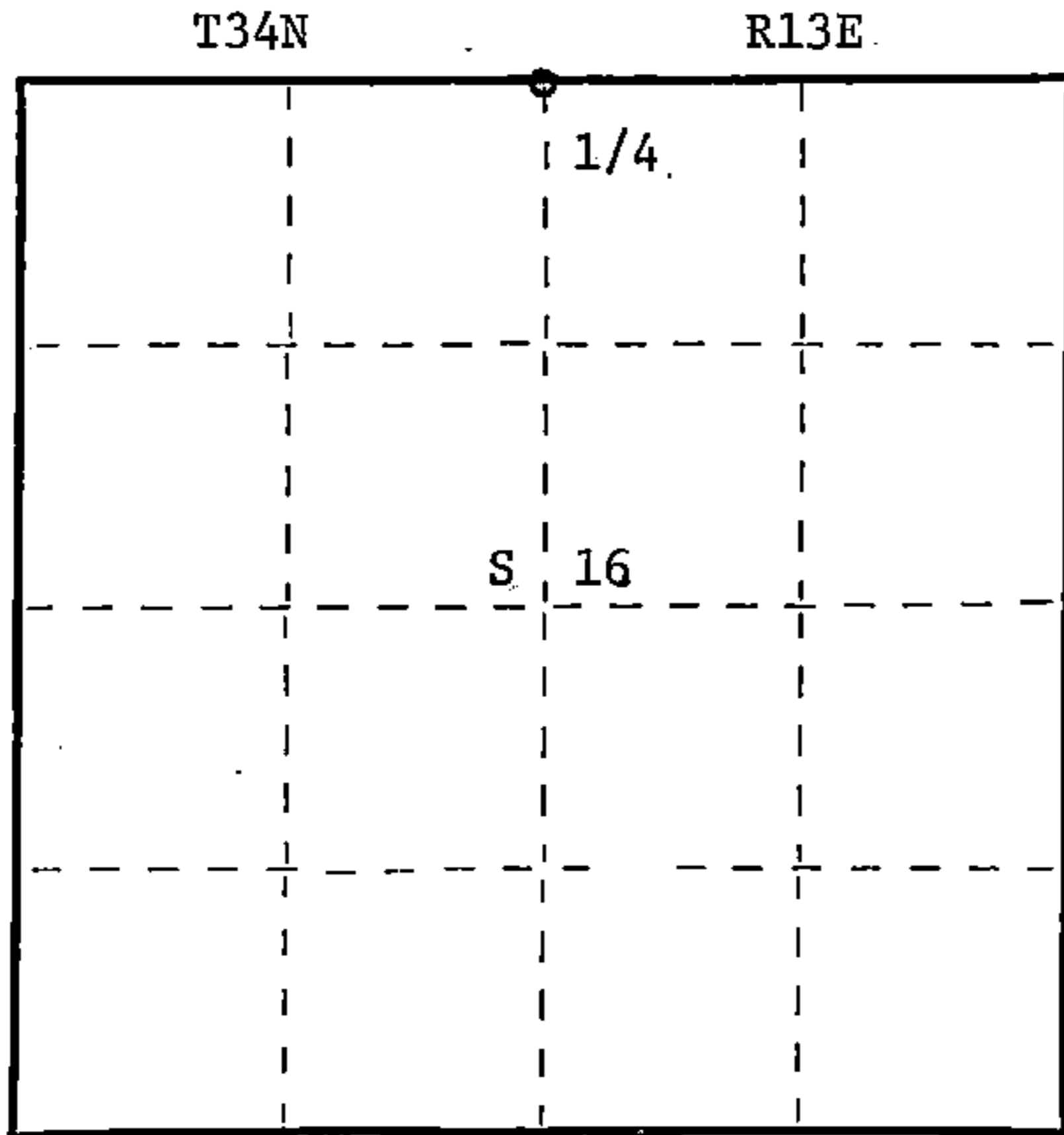
Resident witnesses:

J. Claflin, Reg. Land Surveyor

H. Wagoner



Stock No. 26272  
FORM 985  
H.C. Miller Company



○ = Corner monument restored.

History of original corner establishment:

Original corner established in 1865 by James Nowlin, government deputy surveyor, from which hemlock 9" bears S22W 5 links and hemlock 12" N39E 25 links.

Description of corner evidence found:

Recovered an old 1" iron pipe and 5" square cedar post for 1/4 corner.

Description of monument and accessories I established to perpetuate the original location of this corner.

Placed a Forest County 2-1/2" A-1 monument in position of old iron pipe - cap stamped: Monument projects 6" above ground.

Marked NBT's:

- Sugar 7" S19W 7.09 feet )
- Maple 6" S24E 16.17 feet )
- Sugar 5" N72E 11.03 feet ) scribed 1/4 B.T.
- Twin Maple 7" N19E 25.72 feet )

T34N R13E  
1/4 S 9  
S 16  
S1682-1983

Dated at Rhinelander, Wis., this 30th day of June, 1983.

Signature Glen Barker Title Registered Land Surveyor Registration No. S-1682  
(County Surveyor, Registered Land Surveyor, or other duly authorized official)

Office of Register of Deeds, County of Forest, I hereby certify that the within instrument was filed in this office for record on the 26th day of July, 1983 at 11:55 o'clock A. M.

Eugene Stutzman  
(Register of Deeds)

By \_\_\_\_\_ Deputy

DOCUMENT NO. **123854**

43413090020