

NOV 08 2023

CORTNEY BRITTEN CLEEREMAN
REGISTER OF DEEDS

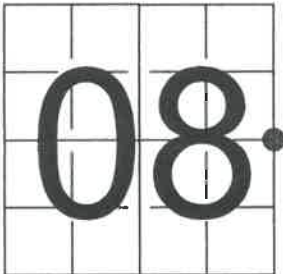
241600

U S PUBLIC LAND SURVEY MONUMENT RECORD

NOTE: This form is intended and designed to fulfill all requirements of Wisconsin Administrative Code, Chapter A-E 7.08 U.S. Public Land Survey Monument Record (3) (a-i)

A-E 7.08(3)(a) Identity of corner:
EAST 1/4 CORNER SECTION 08,
TOWNSHIP 34 NORTH,
RANGE 13 EAST OF THE 4TH PM,
TOWN OF NASHVILLE, COUNTY OF FOREST

WISCORS - FOREST COUNTY
N: 524,698.232 USft (XXX,XXX.XXX)
E: 840,945.838 USft (XXX,XXX.XXX)
Datum: NAD83 (2011)
GNSS Method RTK
Base from GNSS Control set WISCORS VRS



The coordinate value shown has been verified by the average of two or more GPS observations at a markedly different time. Coordinates shown in parenthesis are previously published values.

A-E 7.08(3)(b)

Original Surveyor: James L. Nowlin

Date of Original Survey	Commenced:	October 3, 1865	Original Accessories:		
	Completed:	October 18, 1865	Sugar	10	N 69° E 20 Links
			Sugar	20	S 50° W 22 Links

See previous Land Corner Restoration - G-9 - July 13, 1981 - Surveyor 1537 - Daniel K. Pleoger - THENCE:

November 17, 1997 - Surveyor 2070 - Michael E. Weber - indicates this position as "aluminum capped monument found in place" on Forest Co. Surveyor File #341309-19971117.

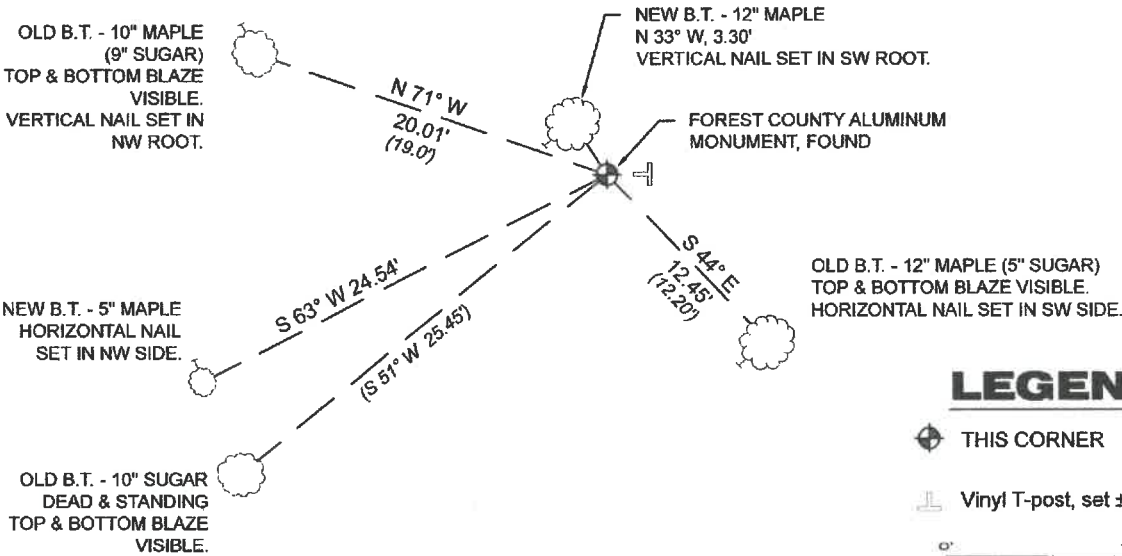
June 29, 2004 - Surveyor 1910 - Matthew E. Hoglund - indicates this position as "2" county aluminum mon. found" on Forest Co. Surveyor File #341309-20040629.

June 08, 2007 - Surveyor 2197 - Michael A. Trembl - indicates this position as "2" alu. pipe mon. found" on Forest Co. Surveyor File #341309-20070608.

September 7, 2003 - I found a 2.5" diameter aluminum pipe, with a 3.2" diameter cap stamped to identify the corner. The monument extends ±12" above grade and is surrounded by rocks. I also found all 3 of Pleoger's bearing trees. I established 2 new bearing trees as shown below.

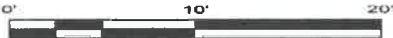
A-E 7.08(3)(c)(d) Plan view of corner with references to at least 4 witness monuments.

BEARINGS LISTED TO THE NEAREST
SECOND ARE REFERENCED TO WISCONSIN
COUNTY COORDINATE REFERENCE
SYSTEM - FOREST COUNTY ZONE.
ALL OTHER BEARINGS ARE MAGNETIC.



LEGEND

- THIS CORNER
- Vinyl T-post, set ±1.5 feet east of corner



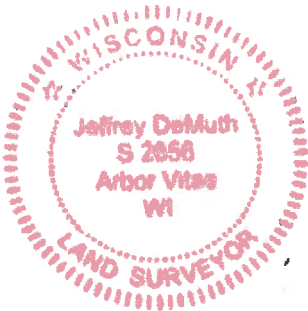
A-E 7.08(3)(e) 1865 Surveyor set a post, 1981 Surveyor set a 2.5" aluminum pipe with an alloy cap, subsequent surveyors found the same, as did I in 2023.

A-E 7.08(3)(f) I accept this monument as a FOUND PERPETUATED LOCATION of the corner.
A-E 7.08(3)(g)(h) This corner was not determined through lost-corner-proportionate methods.

A-E 7.08(3)(i) I, Jeffrey L. DeMuth, Professional Land Surveyor No. S-2656, hereby certify that the corner location on this record was determined by me or under my direction and control, and that this U.S. Public Land Survey Monument Record is correct and complete to the best of my knowledge, and belief.

SIGNATURE

September 19, 2023
DATE



43413082000

G9

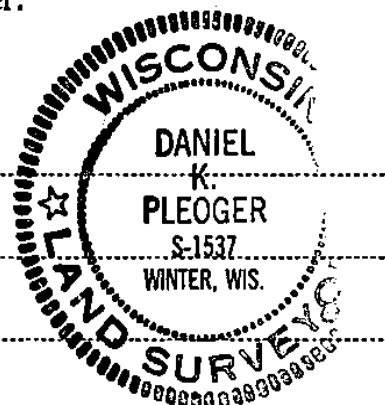
CERTIFIED LAND CORNER RESTORATION

Index No. **6-99**

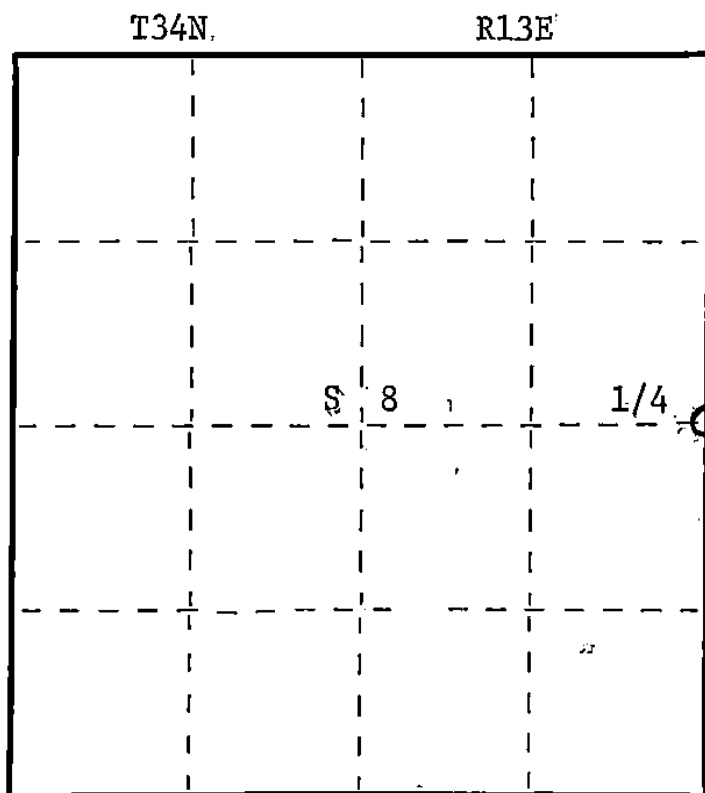
State of Wisconsin }
County of Forest } ss.

I, Daniel K. Pleoger, do hereby certify that on the 13 day of July, 1981, I found evidence of the Quarter corner of Sections 8 & 9 Township 34, North, Range 13 east, Fourth Principal Meridian, as described hereon; and that from this evidence I established a new monument and accessories as described hereon to perpetuate the original location of this corner.

Resident witnesses:



FORM 985 H. C. MILLER CO., MILWAUKEE



○ = Corner monument restored.

History of original corner establishment:

Original corner established by James L. Nowlin Gov. Deputy Surveyor in 1865 from which sugar 10" bears N69E 20 lks and sugar 20" bears S50W 22 lks.

Description of corner evidence found:

Recovered an old 1½" x 24" iron pipe with rock cairn around it; also a 2"x2" cedar stake beside it.

Recovered o.B.T.

Yellow birch 20" N72E 14.15 ft.
Scribing not legible

Description of monument and accessories I established to perpetuate the original location of this corner.
Replaced iron pipe with a 2½" aluminum pipe with alloy cap stamped:

Monument projects 12" above ground

Marked NBTs

Sugar 9" N71W 19.0 ft.)
Sugar 6" S51W 25.45 ft.)
Sugar 5" S44E 12.20 ft.) - Scribed 1/4 - B.T.

T34N R13E
1/4 8 9
S1537 - 1981

Dated at Rhineland, Wis., this 17 day of September, 1981

Signature Daniel K. Pleoger Title Registered Land Surveyor Registration No. 1537
(County Surveyor, Registered Land Surveyor, or other duly authorized official)

Office of Register of Deeds, County of Forest, I hereby certify that the within instrument was filed in this office for record on the 25th day of September, 1981 at 2:00 o'clock P. M.

Eugene Stutzman
(Register of Deeds)
By _____ Deputy

DOCUMENT NO. **120519**

43413082-000