

241612

NOV 08 2023

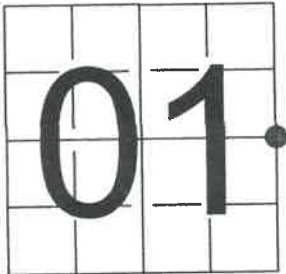
CORTNEY BRITTEN CLEEREMAN  
REGISTER OF DEEDS

U S PUBLIC LAND SURVEY MONUMENT RECORD - ADDENDUM

NOTE: This form is intended and designed to fulfill all requirements of Wisconsin Administrative Code, Chapter A-E 7.08 U.S. Public Land Survey Monument Record (3) (a-i)

A-E 7.08(3)(a) Identity of corner:  
EAST 1/4 CORNER SECTION 01,  
TOWNSHIP 34 NORTH,  
RANGE 13 EAST OF THE 4TH PM,  
TOWN OF NASHVILLE,  
COUNTY OF FOREST

WISCORS - FOREST COUNTY  
N: 529,571.153 USft (XXX,XXX.XXX)  
E: 862,336.729 USft (XXX,XXX.XXX)  
Datum: NAD83 (2011)  
GNSS Method RTK  
Base from GNSS Control set WISCORS VRS



The coordinate value shown has been verified by the average of two or more GPS observations at a markedly different time. Coordinates shown in parenthesis are previously published values.

A-E 7.08(3)(b)

Original Surveyor: Alfred Millard

Date of Original Survey    Commenced:    August, 1857  
Completed:    August, 1857

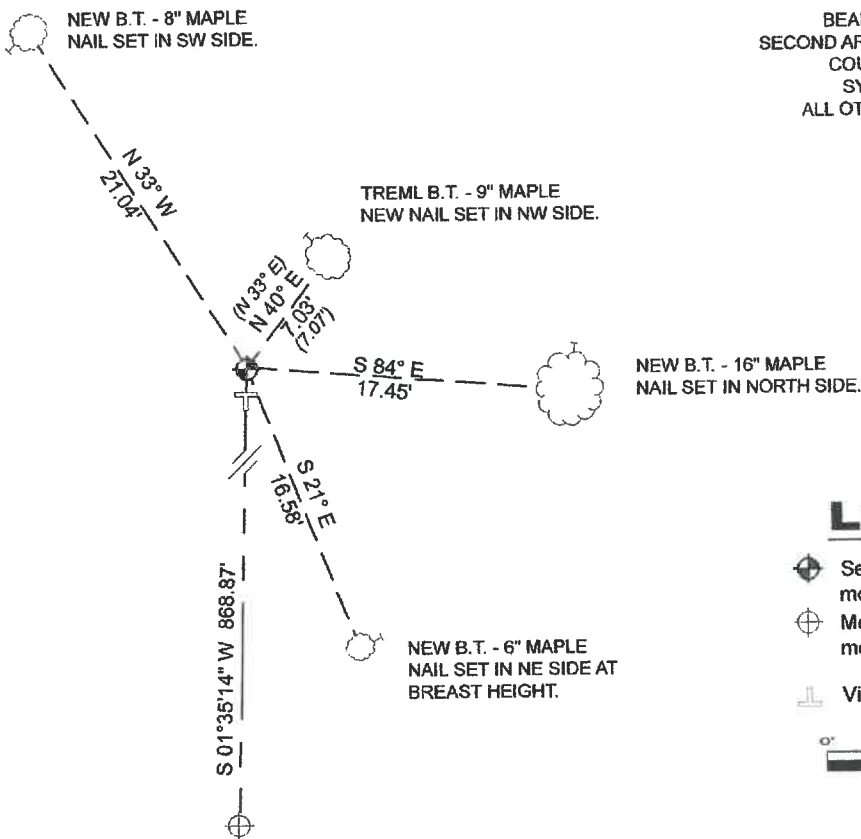
Original Accessories:  
Hemlock    15    N 30° W    112 Links  
Hemlock    18    N 65° E    64 Links

See U.S. Public Land Survey Monument Record - C-1 - July 15, 2002 - Surveyor 2197 - Michael A. Tremi - THENCE:

September 22, 2010 - Surveyor 2197 - Michael A. Tremi - indicate this position as "existing 6" dia. con. mon. w/brass cap" on Forest Co. Surveyor File #341301-20100922.

February 7, 2023 - I found a 6" diameter concrete monument with a 2.5" diameter brass cap stamped to identify the corner affixed to the top. I also found 1 of Tremi's bearing trees. I established 3 new reference monuments as shown below.

A-E 7.08(3)(c)(d) Plan view of corner with references to at least 4 witness monuments.



BEARINGS LISTED TO THE NEAREST  
SECOND ARE REFERENCED TO WISCONSIN  
COUNTY COORDINATE REFERENCE  
SYSTEM - FOREST COUNTY ZONE.  
ALL OTHER BEARINGS ARE MAGNETIC.

LEGEND

- Section corner - 6" diameter concrete monument with 2.5" diameter brass cap.
- Meander corner - 6" diameter concrete monument with 2.5" diameter brass cap.
- Vinyl T-post, set ±4 feet south of corner



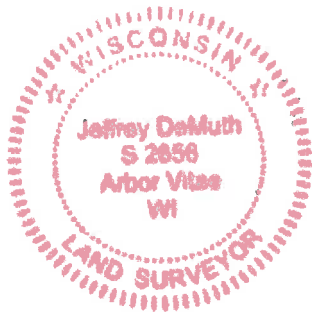
A-E 7.08(3)(e) 1857 Surveyor set a post, 2002 Surveyor found a 6" diameter concrete monument with a stamped brass cap. I found a 6" diameter concrete monument with a 2.5" diameter brass cap stamped to identify corner.

A-E 7.08(3)(f) I accept this monument as a FOUND PERPETUATED LOCATION of the corner.  
A-E 7.08(3)(g)(h) This corner was not determined through lost-corner-proportionate methods.

A-E 7.08(3)(i) I, Jeffrey L. DeMuth, Professional Land Surveyor No. S-2656, hereby certify that the corner location on this record was determined by me or under my direction and control, and that this U.S. Public Land Survey Monument Record is correct and complete to the best of my knowledge, and belief.

SIGNATURE

March 6, 2023  
DATE



43413012000

C1

Document Number  
176285

REGISTER'S OFFICE  
Forest County, Wis.  
Received for record this 2nd day  
of August A.D., 2002 at  
2:45 o'clock A M. and recorded  
in Vol. Corner Restoration  
page C-1  
Kay Swanson, Deputy  
Register of Deeds

U.S. PUBLIC LAND SURVEY MONUMENT RECORD

(As Required by WI Adm. Code)

History of original corner establishment and subsequent restorations and descriptions of any record, monument, occupational, testimonial or other evidence considered:

- 1857 - Alfred Millard set original corner post and made the following B.T.'s:  
Hemlock 15°, N 30° W, 112 lks., 73.92 feet  
Hemlock 18°, N 65° E, 64 lks., 42.24 feet.
- 1946 - The U.S. General Land Office performed a Dependent Resurvey of Section 6, T34N R14E.  
The point for the quarter corner was found marked by a 2" dia. iron pipe.  
A 6" dia. X 24" long concrete monument with a stamped brass cap was set at this location.  
The following new B.T.'s were made: Maple 6", N 78 1/4° E, 50.5 lks. 33.33 feet  
Maple 9", N 72° W, 20 lks, 13.20 feet
- 2002 - I found the 6" dia. concrete monument & the 2 B.T.'s mentioned above in excellent condition.  
I made 2 new B.T.'s described below:

Corner was: (Check All That Apply)

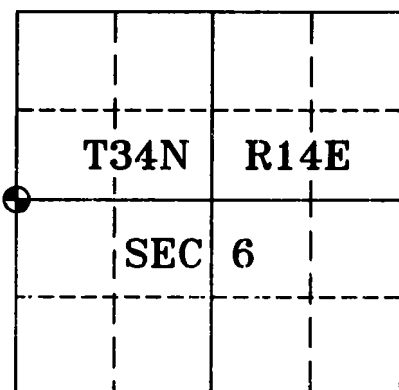
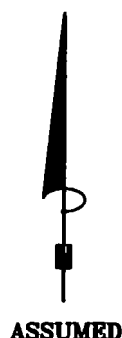
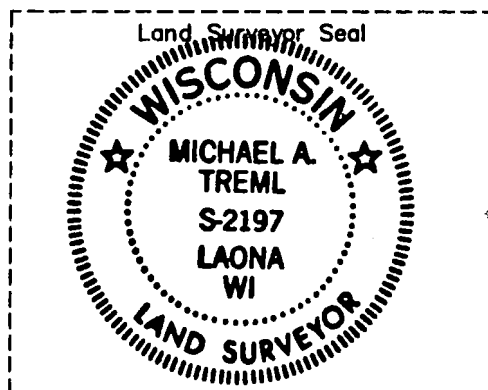
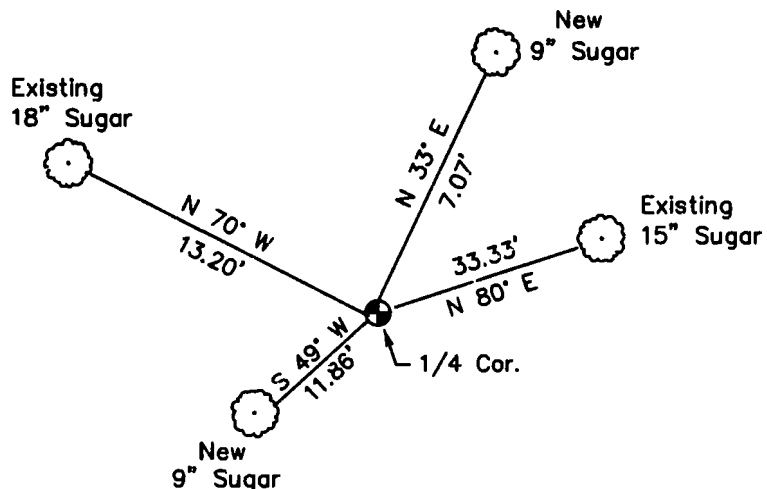
- ☐ Restored through acceptance of an obliterated evidence location.  
☒ Restored through acceptance of a found perpetuated location.  
☐ Considered a lost corner and reestablished through lost corner proportionate methods (include a plan view drawing showing distances and directions to other Public Land Survey Corners used for proportioning and determining the corner location).  
☐ Restored or reestablished in a location that differs from a previous restoration or reestablishment (include a plan view drawing and indicate what was set and/or found).

Describe the monument and accessories used to perpetuate the location of this corner (include a plan view drawing and indicate what was set and/or found).

LEGEND:

- ⊕ Found 6" dia. Con. Mon.  
W/Stamped Brass Cap

Note: All distances are  
taken to nail in  
side of tree.



I, Michael A. Tremel, RLS  
(type or print name) certify that the corner location shown on  
this record was determined by me or under my direction and  
control and that this U.S. Public Land Survey Monument Record  
is correct and complete to the best of my knowledge and belief.

Michael A. Tremel 7/15/02  
Signature Date

The West Quarter corner of  
Section 6 T. 34 N., R. 14 E.  
Forest County, WI

Index No. C-1

43413012000