

NOV 08 2023

CORTNEY BRITTEN CLEEREMAN
REGISTER OF DEEDS

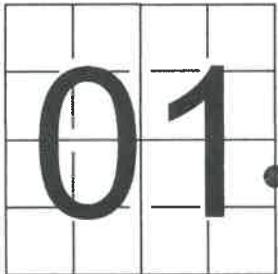
241601

U S PUBLIC LAND SURVEY MONUMENT RECORD - ADDENDUM

NOTE: This form is intended and designed to fulfill all requirements of Wisconsin Administrative Code, Chapter A-E 7.08 U.S. Public Land Survey Monument Record (3) (a-i)

A-E 7.08(3)(a) Identity of corner:
MEANDER CORNER EAST LINE OF
SECTION 01, TOWNSHIP 34 NORTH,
RANGE 13 EAST OF THE 4TH PM,
TOWN OF NASHVILLE,
COUNTY OF FOREST

WISCORS - FOREST COUNTY
N: 528,702.144 USft (XXX,XXX.XXX)
E: 862,312.673 USft (XXX,XXX.XXX)
Datum: NAD83 (2011)
GNSS Method RTK
Base from GNSS Control set WISCORS VRS



The coordinate value shown has been verified by the average of two or more GPS observations at a markedly different time. Coordinates shown in parenthesis are previously published values.

A-E 7.08(3)(b)

Original Surveyor: Alfred Millard

Date of Original Survey Commenced: August, 1857
Completed: August, 1857
36" W. Pine for meander corner

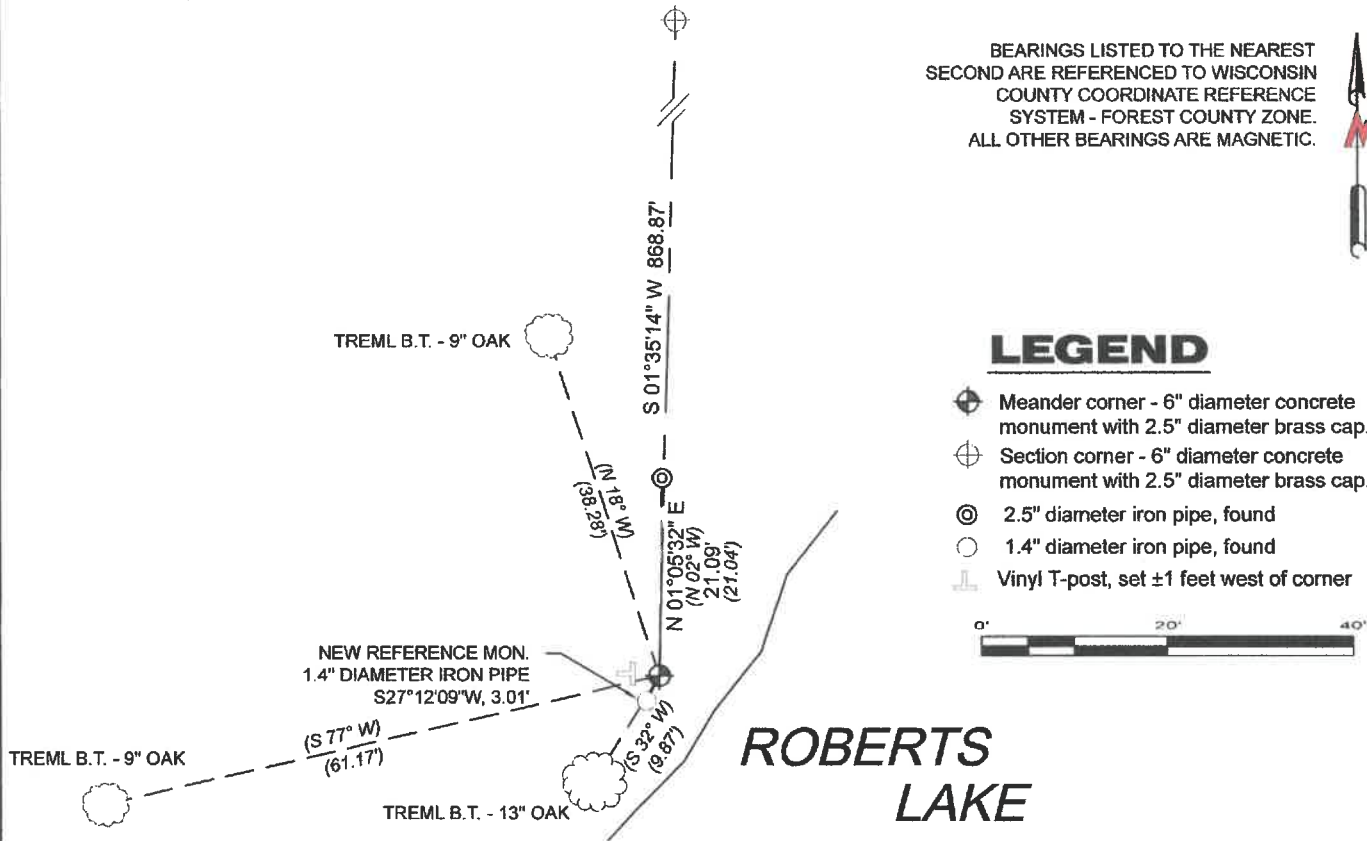
Original Accessories:
W. Pine 18 N 39° E 17 Links
W. Pine 14 S 70° W 33 Links

See U.S. Public Land Survey Monument Record - C, D-1 - July 15, 2002 - Surveyor 2197 - Michael A. Tremi - THENCE:

September 22, 2010 - Surveyor 2197 - Michael A. Tremi - indicate this position as "existing 6" dia. con. mon. w/brass cap" on Forest Co. Surveyor File #341301-20100922.

February 28, 2023 - I found a 6" diameter concrete monument with a 2.5" diameter brass cap stamped to identify the corner affixed to the top. I also found all of Tremi's bearing trees. I established 1 new reference monuments as shown below.

A-E 7.08(3)(c)(d) Plan view of corner with references to at least 4 witness monuments.



A-E 7.08(3)(e) 1857 Surveyor set a post, 2002 Surveyor found a 6" diameter concrete monument with a stamped brass cap. I found a 6" diameter concrete monument with a 2.5" diameter brass cap stamped to identify corner.

A-E 7.08(3)(f) I accept this monument as a FOUND PERPETUATED LOCATION of the corner.

A-E 7.08(3)(g)(h) This corner was not determined through lost-corner-proportionate methods.

A-E 7.08(3)(i) I, Jeffrey L. DeMuth, Professional Land Surveyor No. S-2656, hereby certify that the corner location on this record was determined by me or under my direction and control, and that this U.S. Public Land Survey Monument Record is correct and complete to the best of my knowledge, and belief.

SIGNATURE

March 6, 2023

DATE



43413011400

C-D1