

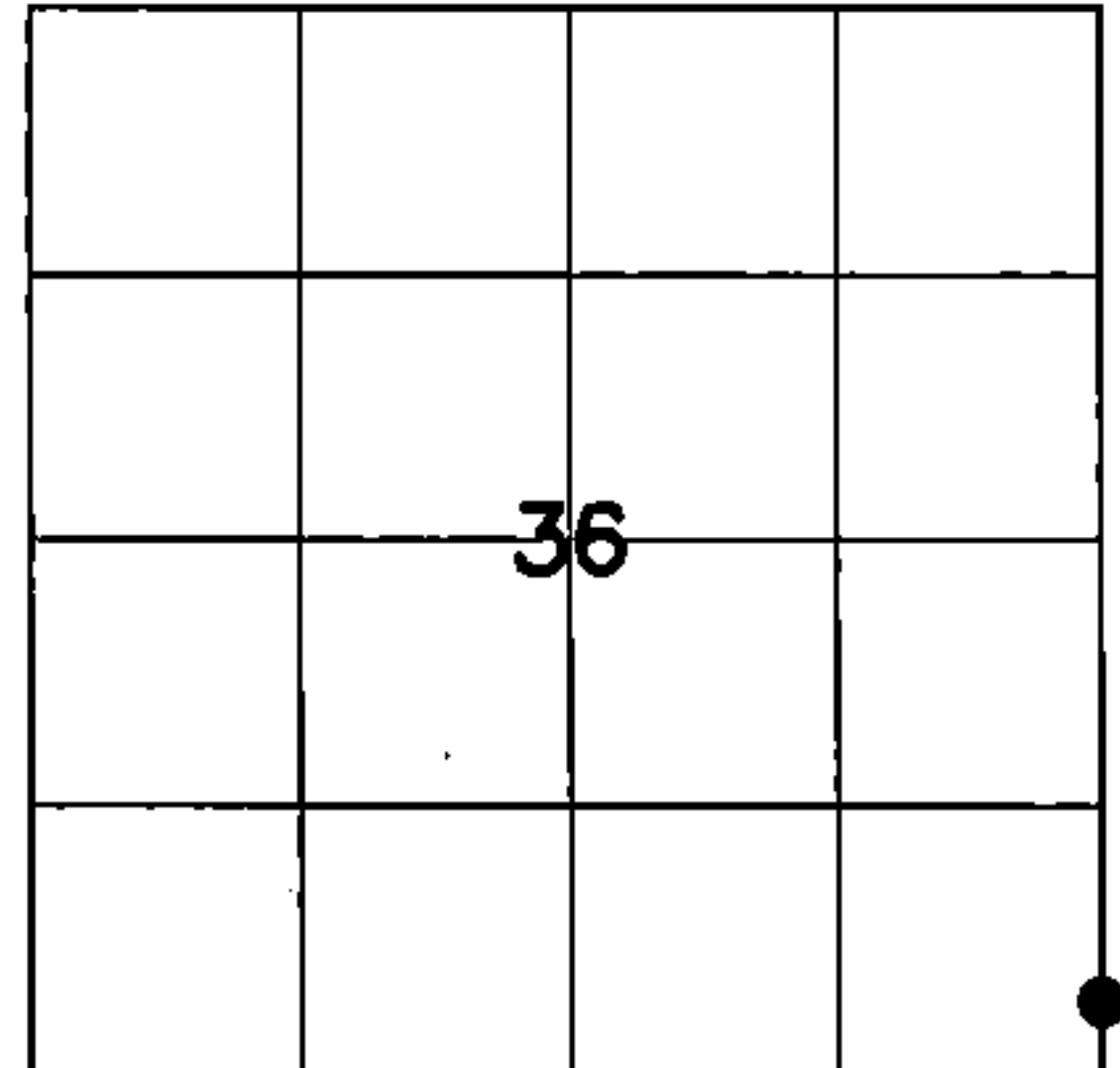
225134

# U.S. PUBLIC LAND SURVEY MONUMENT RECORD

HISTORY OF ORIGINAL CORNER ESTABLISHMENT AND SUBSEQUENT RESTORATION AND DESCRIPTION OF ANY RECORD, MONUMENT OCCUPATIONAL, TESTIMONIAL OR OTHER EVIDENCE CONSIDERED:

THE ORIGINAL CORNER WAS SET BY ALFRED MILLARD IN 1857 WITH THE ORIGINAL BEARING TREES OF:  
BLACK ASH 15" S52°W 38 LINKS  
WHITE BIRCH 12" N72°E 6 LINKS  
1977- KELLY FOUND A WOOD POST & A WELL POINT AND SET ADDITIONAL TIES N75°E 4.65', S59°W 6.27', N38°W, 9.80'  
2016-I FOUND THE 2" PIPE WITH THE BRASS CAP AND SET TIES AS SHOWN

● = LOCATION OF CORNER



SECTION 36  
TOWNSHIP 34 NORTH, RANGE 12 EAST  
TOWN OF AINSWORTH  
LANGLADE COUNTY, WISCONSIN

CORNER WAS: (CHECK ALL THAT APPLY)

- RESTORED THROUGH ACCEPTANCE OF AN OBLITERATED EVIDENCE LOCATION
- RESTORED THROUGH ACCEPTANCE OF A FOUND PERPETUATED LOCATION
- CONSIDERED A LOST CORNER AND REESTABLISHED THROUGH LOST CORNER PROPORTIONATE METHODS (INCLUDE A PLAN VIEW DRAWING SHOWING DISTANCES AND DIRECTIONS TO OTHER PUBLIC LAND SURVEY CORNERS USED FOR PROPORTIONING AND DETERMINING THE CORNER LOCATION)
- RESTORED OR REESTABLISHED IN A LOCATION THAT DIFFERS FROM A PREVIOUS RESTORATION OR RE-ESTABLISHMENT (INCLUDE A PLAN VIEW DRAWING AND INDICATE WHAT WAS SET AND/OR FOUND)
- CHECK IF THERE IS ADDITIONAL INFORMATION ON BACK

DESCRIBE THE MONUMENT AND ACCESSORIES USED TO PERPETUATE THE LOCATION OF THE CORNER. (INCLUDE A PLAN VIEW DRAWING AND INDICATE WHAT WAS SET AND/OR FOUND) ALSO INCLUDE FOUR TIES TO THE SECTION CORNER AND DESCRIPTION OF THE TIES.

FOREST COUNTY, WI  
CORTNEY BRITTEN CLEEREMAN  
REGISTER OF DEEDS  
RECEIVED FOR RECORD

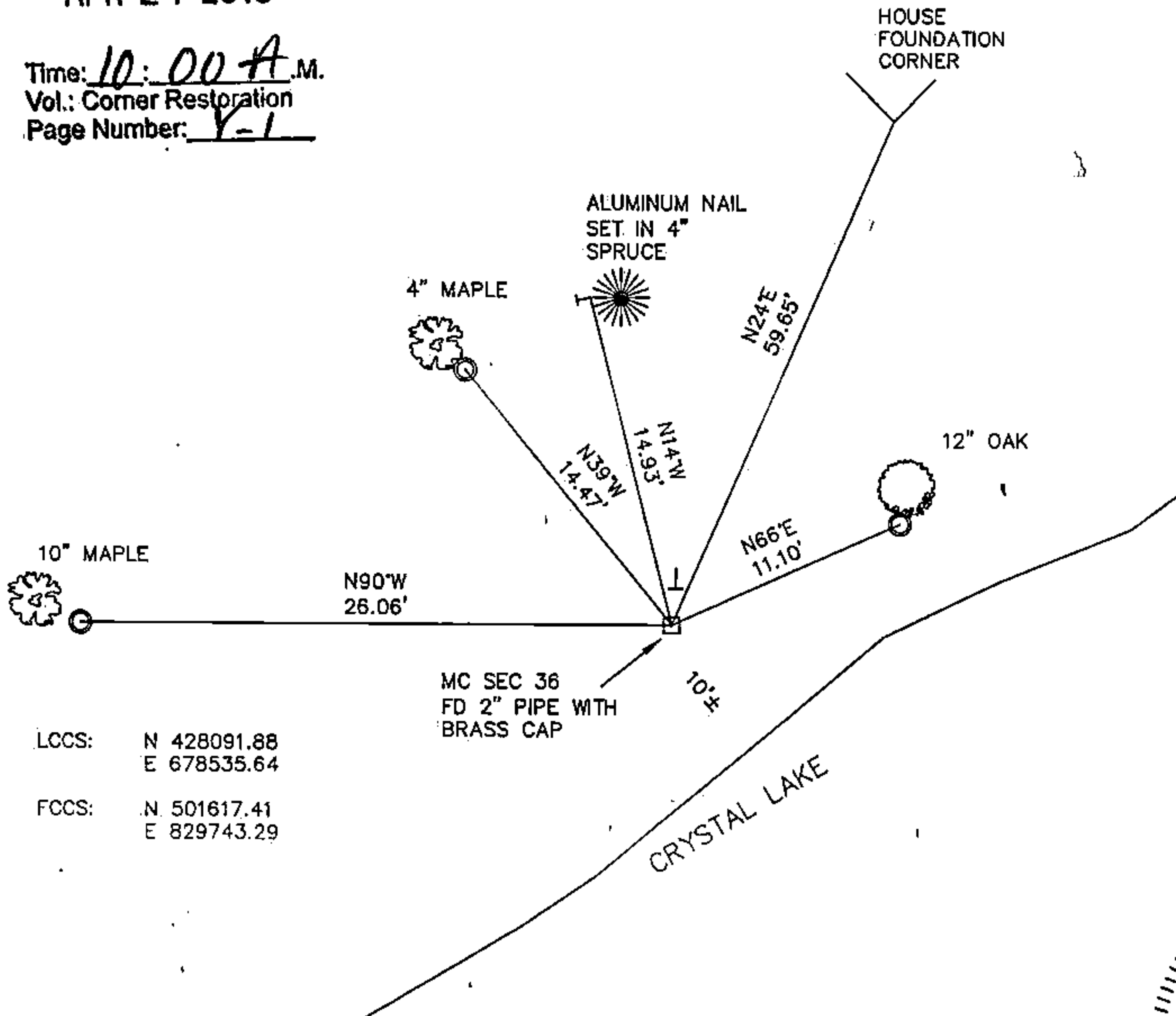
APR 27 2018

Time: 10:00 A.M.  
Vol.: Corner Restoration  
Page Number: Y-1

○ SET 3/4" X 30" IRON REBAR AT ALL TIE LOCATIONS

BEARINGS REFERENCED TO MAGNETIC

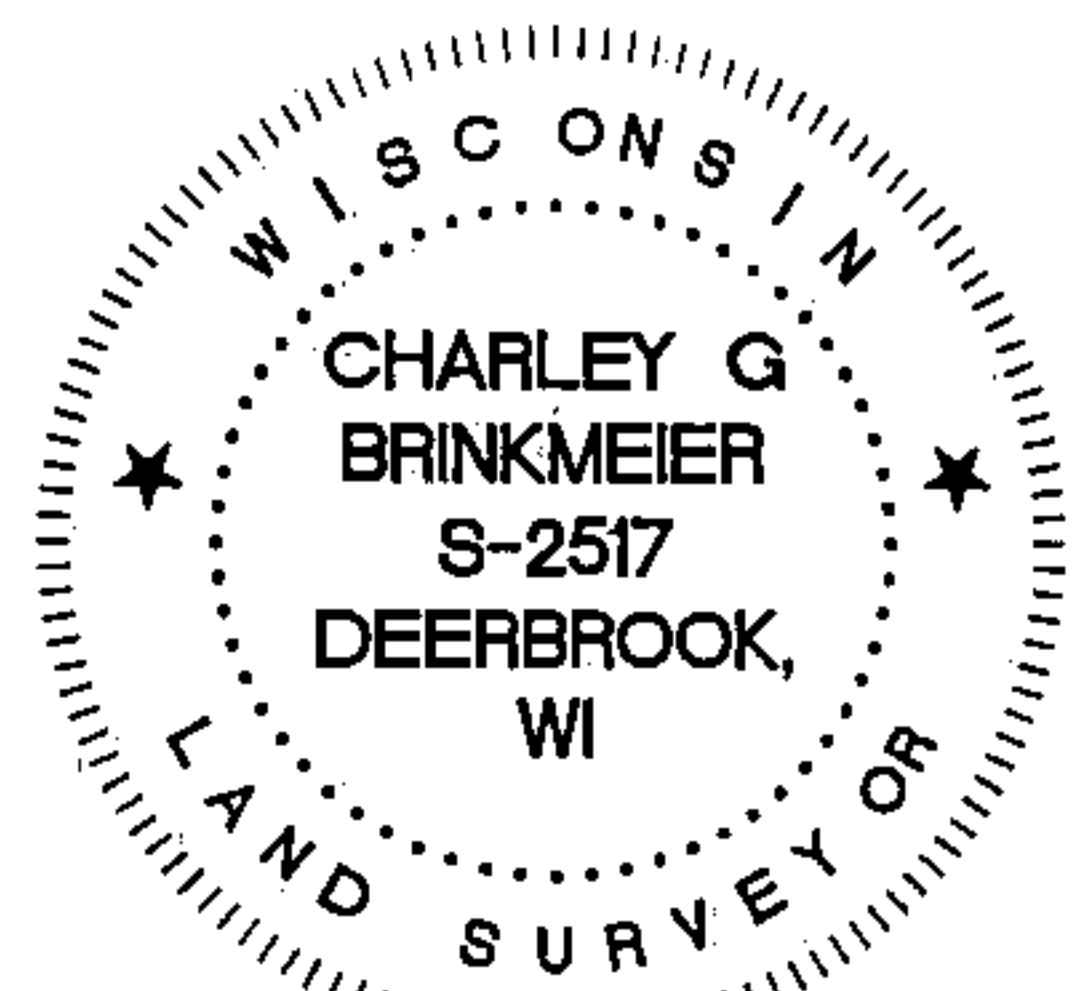
T - WHITE VINYL POST SET



LCSS: N 428091.88  
E 678535.64  
FCCS: N 501617.41  
E 829743.29

CHARLEY G. BRINKMEIER

(type or print name) CERTIFY THAT THE CORNER LOCATION SHOWN ON THIS RECORD WAS DETERMINED BY ME OR UNDER MY DIRECTION AND CONTROL AND THAT THIS U.S. PUBLIC LAND SURVEY MONUMENT RECORD IS CORRECT AND COMPLETE TO THE BEST OF MY KNOWLEDGE AND BELIEF.



INDEX NO.

SIGNATURE Charley G. Brinkmeier

DATE 1-17-17

43A12 36 0200