

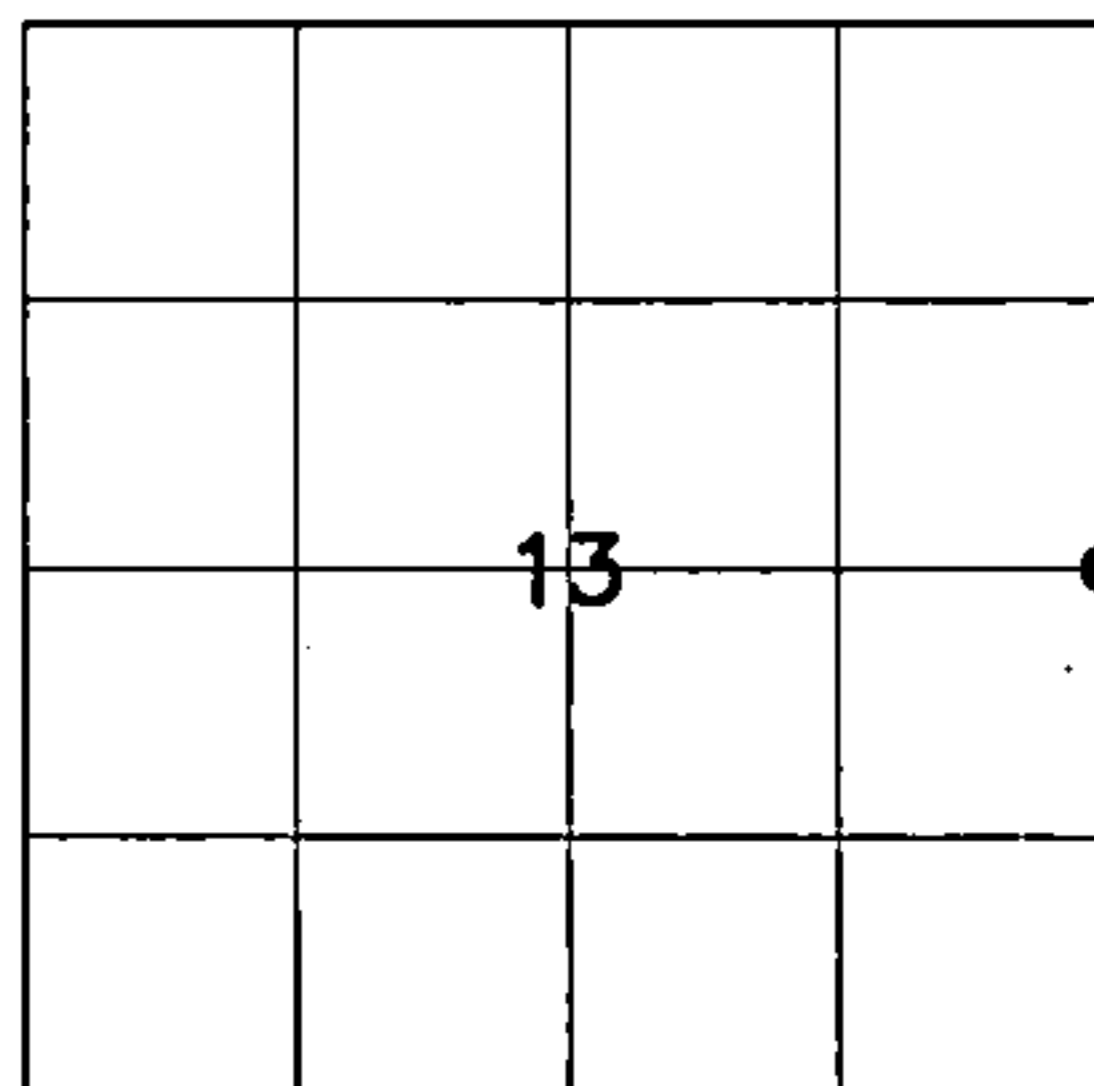
225128

U.S. PUBLIC LAND SURVEY MONUMENT RECORD

HISTORY OF ORIGINAL CORNER ESTABLISHMENT AND SUBSEQUENT RESTORATION AND DESCRIPTION OF ANY RECORD, MONUMENT OCCUPATIONAL, TESTIMONIAL OR OTHER EVIDENCE CONSIDERED:

THE ORIGINAL CORNER WAS SET BY ALFRED MILLARD IN 1857 WITH THE ORIGINAL BEARING TREES OF:
MAPLE 13" N60W 25 LINKS
YEL BIRCH 14" S58E 26 LINKS
1987-KELLY FOUND A BED POST AND SOME BEARING TREES AND SET THE 3" ALUMINUM MONUMENT AND ADDITIONAL TIES, N14E 21.20, S50E 26.50, S18E 7.20, S71W 18.80'
2016-I FOUND THE 3" PIPE WITH THE ALUMINUM CAP AND SET TIES AS SHOWN

● = LOCATION OF CORNER



SECTION 13

TOWNSHIP 34 NORTH, RANGE 12 EAST

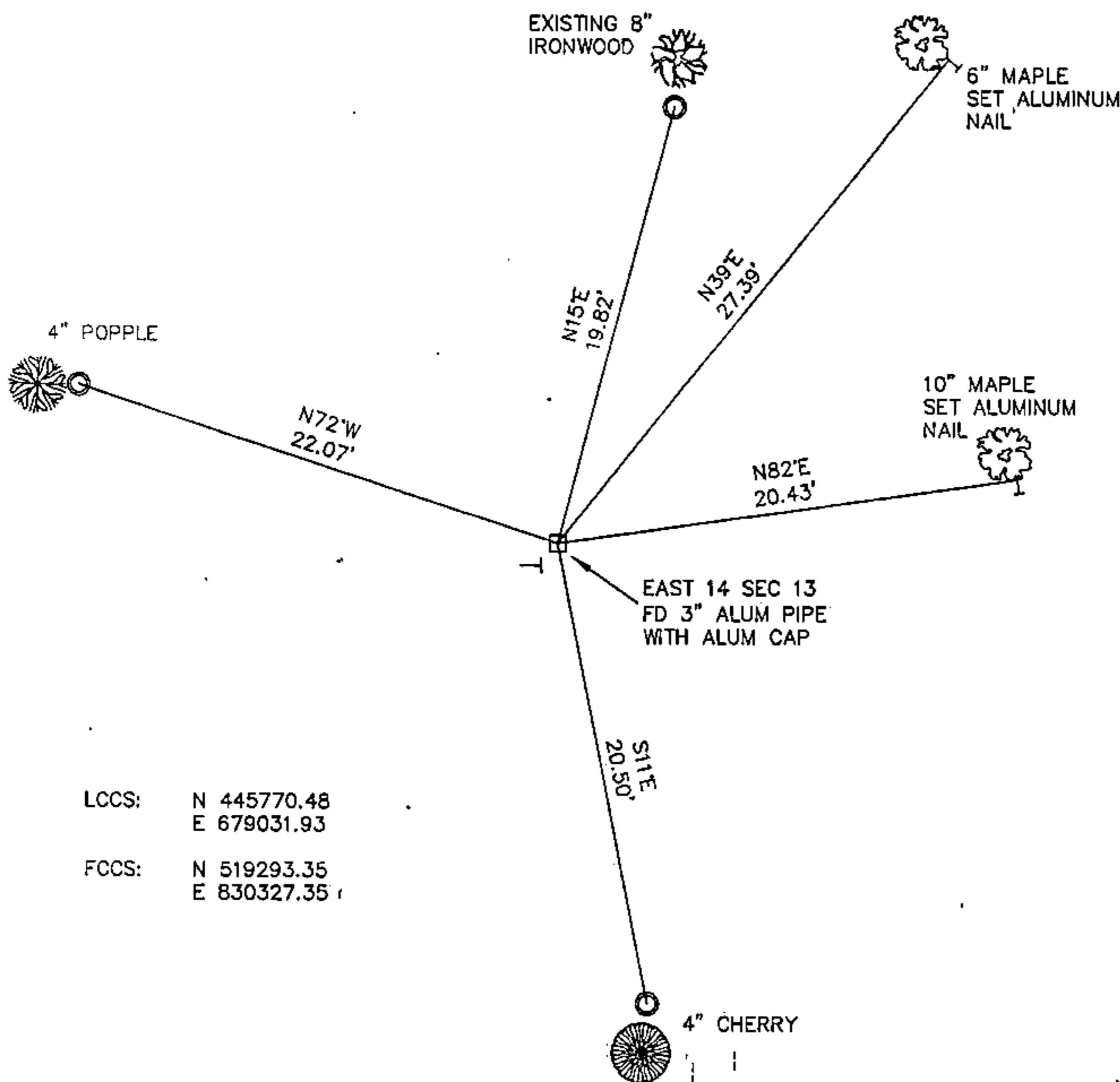
TOWN OF AINSWORTH

LANGLADE COUNTY, WISCONSIN

CORNER WAS: (CHECK ALL THAT APPLY)

- RESTORED THROUGH ACCEPTANCE OF AN OBLITERATED EVIDENCE LOCATION
- RESTORED THROUGH ACCEPTANCE OF A FOUND PERPETUATED LOCATION
- CONSIDERED A LOST CORNER AND REESTABLISHED THROUGH LOST CORNER PROPORTIONATE METHODS (INCLUDE A PLAN VIEW DRAWING SHOWING DISTANCES AND DIRECTIONS TO OTHER PUBLIC LAND SURVEY CORNERS USED FOR PROPORTIONING AND DETERMINING THE CORNER LOCATION)
- RESTORED OR REESTABLISHED IN A LOCATION THAT DIFFERS FROM A PREVIOUS RESTORATION OR RE-ESTABLISHMENT (INCLUDE A PLAN VIEW DRAWING AND INDICATE WHAT WAS SET AND/OR FOUND)
- CHECK IF THERE IS ADDITIONAL INFORMATION ON BACK

DESCRIBE THE MONUMENT AND ACCESSORIES USED TO PERPETUATE THE LOCATION OF THE CORNER. (INCLUDE A PLAN VIEW DRAWING AND INDICATE WHAT WAS SET AND/OR FOUND) ALSO INCLUDE FOUR TIES TO THE SECTION CORNER AND DESCRIPTION OF THE TIES.



○ SET 3/4" X 30" IRON REBAR AT ALL TIE LOCATIONS

BEARINGS REFERENCED TO MAGNETIC

T - WHITE VINYL POST SET

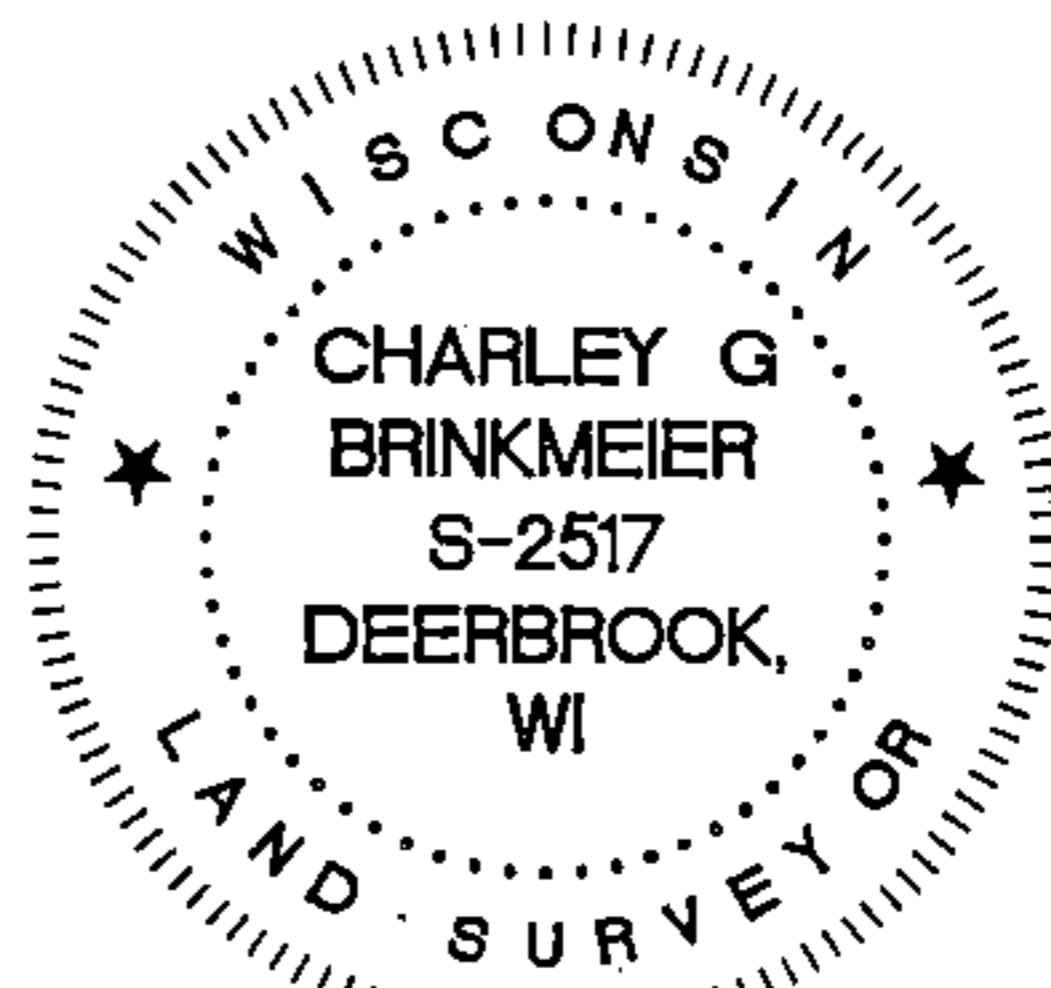
FOREST COUNTY, WI
CORTNEY BRITTEN CLEEREMAN
REGISTER OF DEEDS
RECEIVED FOR RECORD

APR 27 2018

Time: 10:00 A. M.
Vol.: Corner Restoration
Page Number: 2-1

LCCS: N 445770.48
E 679031.93

FCCS: N 519293.35
E 830327.35



CHARLEY G. BRINKMEIER

(type or print name) CERTIFY THAT THE CORNER LOCATION SHOWN ON THIS RECORD WAS DETERMINED BY ME OR UNDER MY DIRECTION AND CONTROL AND THAT THIS U.S. PUBLIC LAND SURVEY MONUMENT RECORD IS CORRECT AND COMPLETE TO THE BEST OF MY KNOWLEDGE AND BELIEF.

Charley G. Brinkmeier
SIGNATURE

1-17-17
DATE

43412132000

INDEX NO.