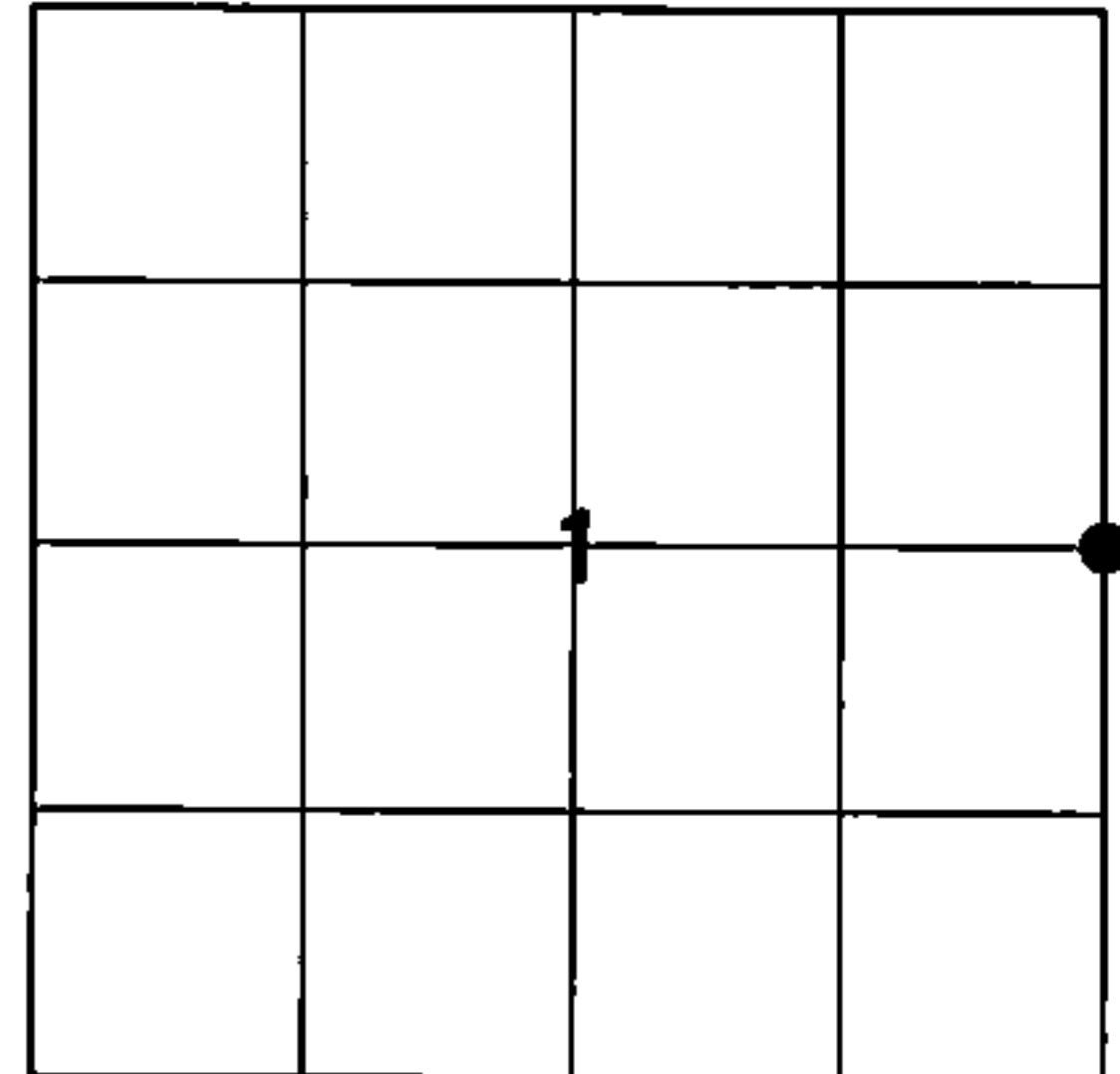


# U.S. PUBLIC LAND SURVEY MONUMENT RECORD

HISTORY OF ORIGINAL CORNER ESTABLISHMENT AND SUBSEQUENT RESTORATION AND DESCRIPTION OF ANY RECORD, MONUMENT OCCUPATIONAL, TESTIMONIAL OR OTHER EVIDENCE CONSIDERED:

THE ORIGINAL CORNER WAS SET BY ALFRED MILLARD IN 1857 WITH THE ORIGINAL BEARING TREES OF:  
HEMLOCK 18" N62E 42 LINKS  
WHITE PINE 24" S35W 42 LINKS  
1990-KELLY FOUND A 4X4 WOOD POST & A 1" IRON PIPE, HE REPLACED THE PIPE WITH A 2" PIPE WITH ALUMINUM CAP AND ADDITIONAL BEARING TREES OF N55E 21.30', S30E 16.15', S23W 33.40', S77W 20.66',  
2016-I FOUND THE 1" PIPE WITH BRASS CAP, DID NOT FIND KELLY'S 2" ALUMINUM PIPE. THE 1" PIPE MISSED A PRORATED DISTANCE BY APPROXIMATELY 12 FEET. I ACCEPTED THE PIPE AS THE EAST 1/4 AND SET TIES AS SHOWN.

● = LOCATION OF CORNER



SECTION 1  
TOWNSHIP 34 NORTH, RANGE 12 EAST  
TOWN OF AINSWORTH  
LANGLADE COUNTY, WISCONSIN

CORNER WAS: (CHECK ALL THAT APPLY)

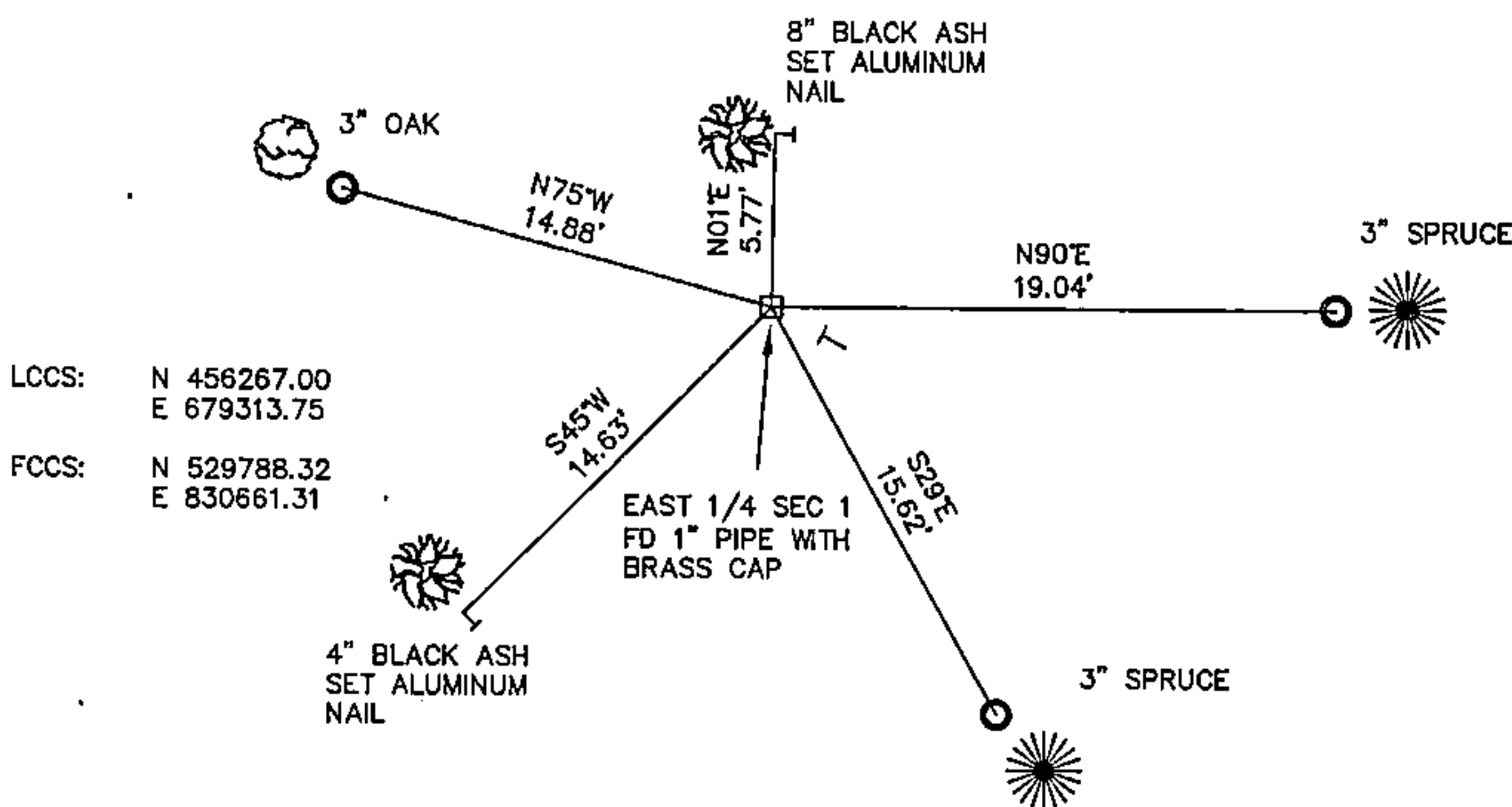
- RESTORED THROUGH ACCEPTANCE OF AN OBLITERATED EVIDENCE LOCATION
- RESTORED THROUGH ACCEPTANCE OF A FOUND PERPETUATED LOCATION
- CONSIDERED A LOST CORNER AND REESTABLISHED THROUGH LOST CORNER PROPORTIONATE METHODS (INCLUDE A PLAN VIEW DRAWING SHOWING DISTANCES AND DIRECTIONS TO OTHER PUBLIC LAND SURVEY CORNERS USED FOR PROPORTIONING AND DETERMINING THE CORNER LOCATION)
- RESTORED OR REESTABLISHED IN A LOCATION THAT DIFFERS FROM A PREVIOUS RESTORATION OR RE-ESTABLISHMENT (INCLUDE A PLAN VIEW DRAWING AND INDICATE WHAT WAS SET AND/OR FOUND)
- CHECK IF THERE IS ADDITIONAL INFORMATION ON BACK

DESCRIBE THE MONUMENT AND ACCESSORIES USED TO PERPETUATE THE LOCATION OF THE CORNER. (INCLUDE A PLAN VIEW DRAWING AND INDICATE WHAT WAS SET AND/OR FOUND) ALSO INCLUDE FOUR TIES TO THE SECTION CORNER AND DESCRIPTION OF THE TIES.

○ SET 3/4" X 30" IRON REBAR AT ALL TIE LOCATIONS

BEARINGS REFERENCED TO MAGNETIC

T - WHITE VINYL POST SET



LCCS: N 456267.00  
E 679313.75  
FCCS: N 529788.32  
E 830661.31

FOREST COUNTY, WI  
CORTNEY BRITTEN CLEEREMAN  
REGISTER OF DEEDS  
RECEIVED FOR RECORD

APR 27 2018

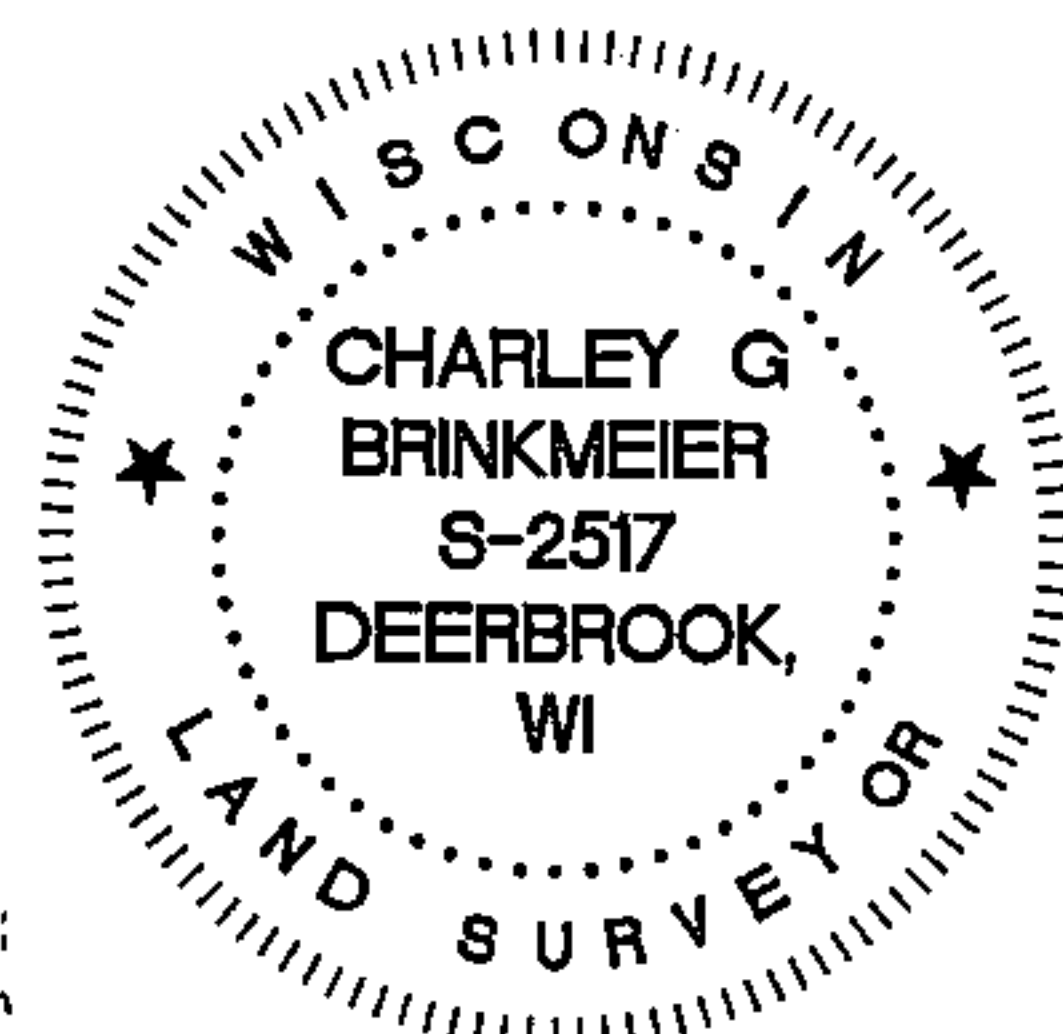
Time: 10:00 A M.  
Vol.: Corner Restoration  
Page Number: C-1

CHARLEY G. BRINKMEIER

(type or print name) CERTIFY THAT THE CORNER LOCATION SHOWN ON THIS RECORD WAS DETERMINED BY ME OR UNDER MY DIRECTION AND CONTROL AND THAT THIS U.S. PUBLIC LAND SURVEY MONUMENT RECORD IS CORRECT AND COMPLETE TO THE BEST OF MY KNOWLEDGE AND BELIEF.

*Charley G. Brinkmeier*  
SIGNATURE

5-12-17  
DATE



INDEX NO.

43412012000